



PROPERTY DESCRIPTION

Perfect Office opportunity for your business with high visibility off the very busy Rainbow Dr. This 2,624SF building has 7 offices, 2 restrooms, conference room, a small break room and more than 5 storage closets throughout!

PROPERTY HIGHLIGHTS

- Prime location in Rainbow City
- Versatile layout for office spaces
- Excellent visibility and access
- Well-maintained property
- Onsite Parking

OFFERING SUMMARY

Sale Price:	\$237,900
Lease Rate:	\$12.00 SF/yr
Lot Size:	0.13 Acres
Building Size:	2,624 SF

DEMOGRAPHICS	0.3 MILES	0.5 MILES	1 MILE
Total Households	248	579	1,774
Total Population	528	1,298	4,051
Average HH Income	\$60,123	\$70,811	\$75,141

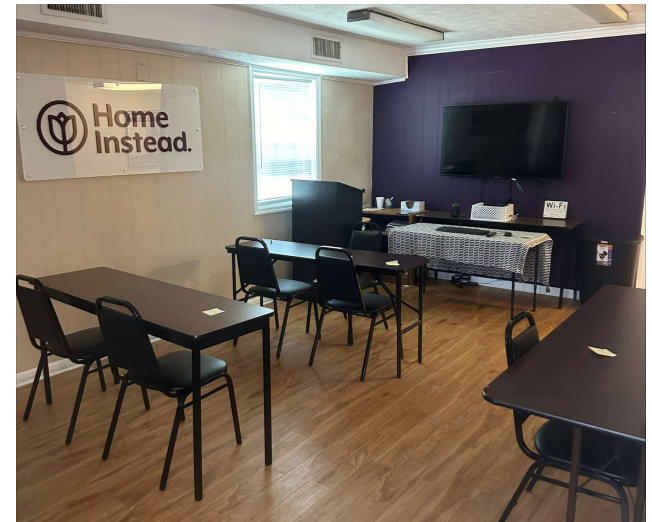
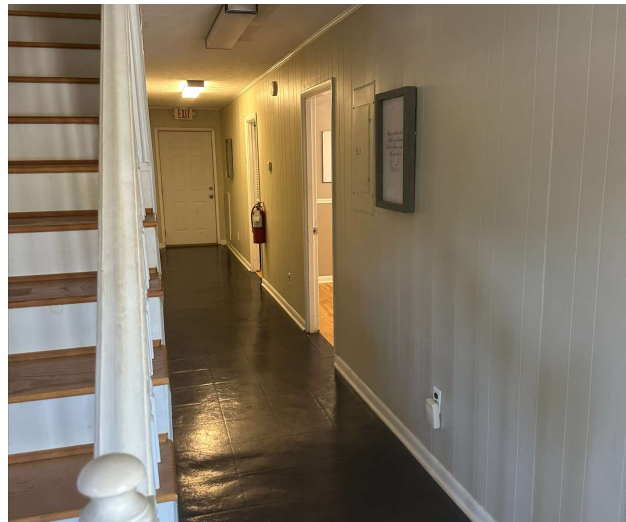
RACHEL ROMANO
205.218.0003
rromano@redrockrg.com

TRISH RUSHING, CCIM
205.930.1785
trushing@redrockrg.com



RACHEL ROMANO
205.218.0003
rromano@redrockrg.com

TRISH RUSHING, CCIM
205.930.1785
trushing@redrockrg.com



RACHEL ROMANO
205.218.0003
rromano@redrockrg.com

TRISH RUSHING, CCIM
205.930.1785
trushing@redrockrg.com



RACHEL ROMANO
205.218.0003
rromano@redrockrg.com

TRISH RUSHING, CCIM
205.930.1785
trushing@redrockrg.com



RACHEL ROMANO
205.218.0003
rromano@redrockrg.com

TRISH RUSHING, CCIM
205.930.1785
trushing@redrockrg.com