



WESTVIEW
CORPORATE CENTER

*Flexible Solutions
Tailored to Your Needs*



AVISON
YOUNG



Tenant Lounge

*Designed with
Tenant in Mind*

Westview Corporate Center at 5280 Corporate Drive stands out as one of the premier office properties in Frederick, Maryland. This “best-in-class” office building holds a strategic position at the gateway to Frederick’s bustling business community, providing excellent access to and from I-270, I-70, and Rt. 15. The building’s floor plates are designed with flexibility in mind, featuring spectacular window line and ample natural light.



Conference Facility

*Present with
Confidence*

The building offers two conference facilities, including a larger **4,500-square-foot, 150-seat conference center**. The conferencing facility is fully furnished with the latest AV equipment and individual power outlets for each attendee. All at no cost to building tenants.



Micro 24/7 Market

24/7 Self-Serve Market

Situated in close proximity to Westview Promenade Shopping Center, 5280 Corporate Drive offers convenient access to various shopping, dining, and hotel options.

The building also features a **24/7 Self-Serve Market** on the 2nd Floor, offering a variety of healthy food options and fresh drinks.



Possibilities Worth Exploring

FRANCIS SCOTT KEY MALL

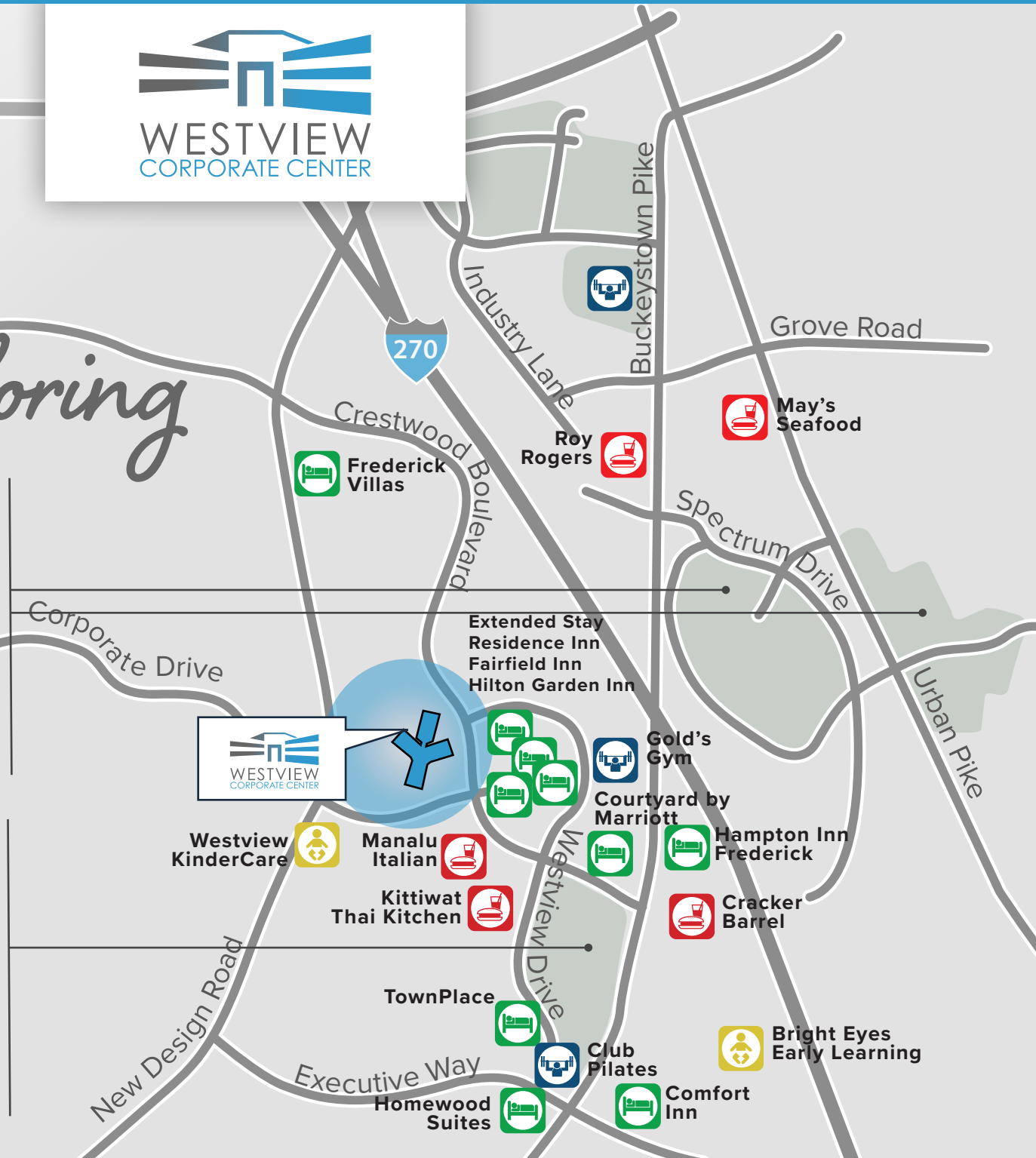


- | | |
|--------------------|----------------------|
| Applebee's | Panera Bread |
| Auntie Anne's | Red Robin |
| CAVA | Rosa's Pizza |
| Chick-fil-A | Staples |
| Chopsticks Express | Taco Bell |
| Jesey Mike's Subs | Tanzo Japanese Steak |
| Olive Garden | UNO Pizzeria & Grill |

WESTVIEW PROMENADE

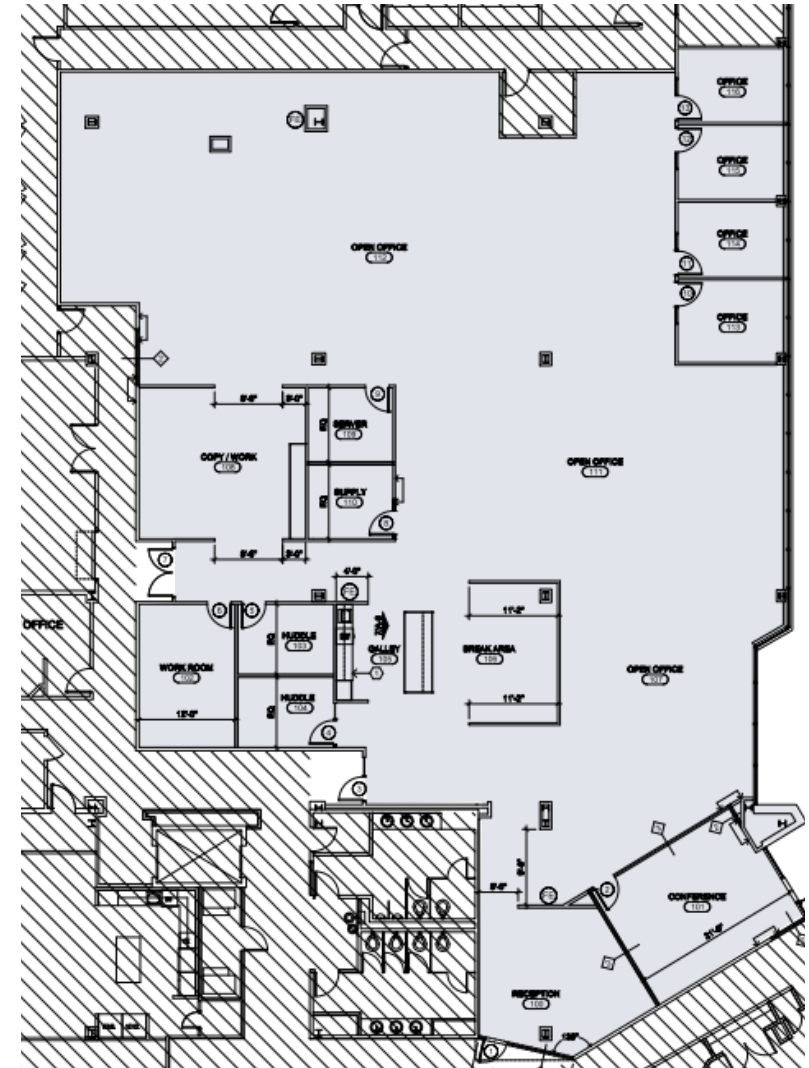


- | | |
|-------------------------|---------------|
| Café Rio | PNC Bank |
| Chipotle Mexican Grill | Poke Bowl |
| IHOP | Regal Cinema |
| Krispy Kreme | Starbucks |
| Matsutake Sushi & Steak | TGI Fridays |
| McDonald's | The UPS Store |
| MOD Pizza | Wild Berries |
| MOM's Market | X-Golf |

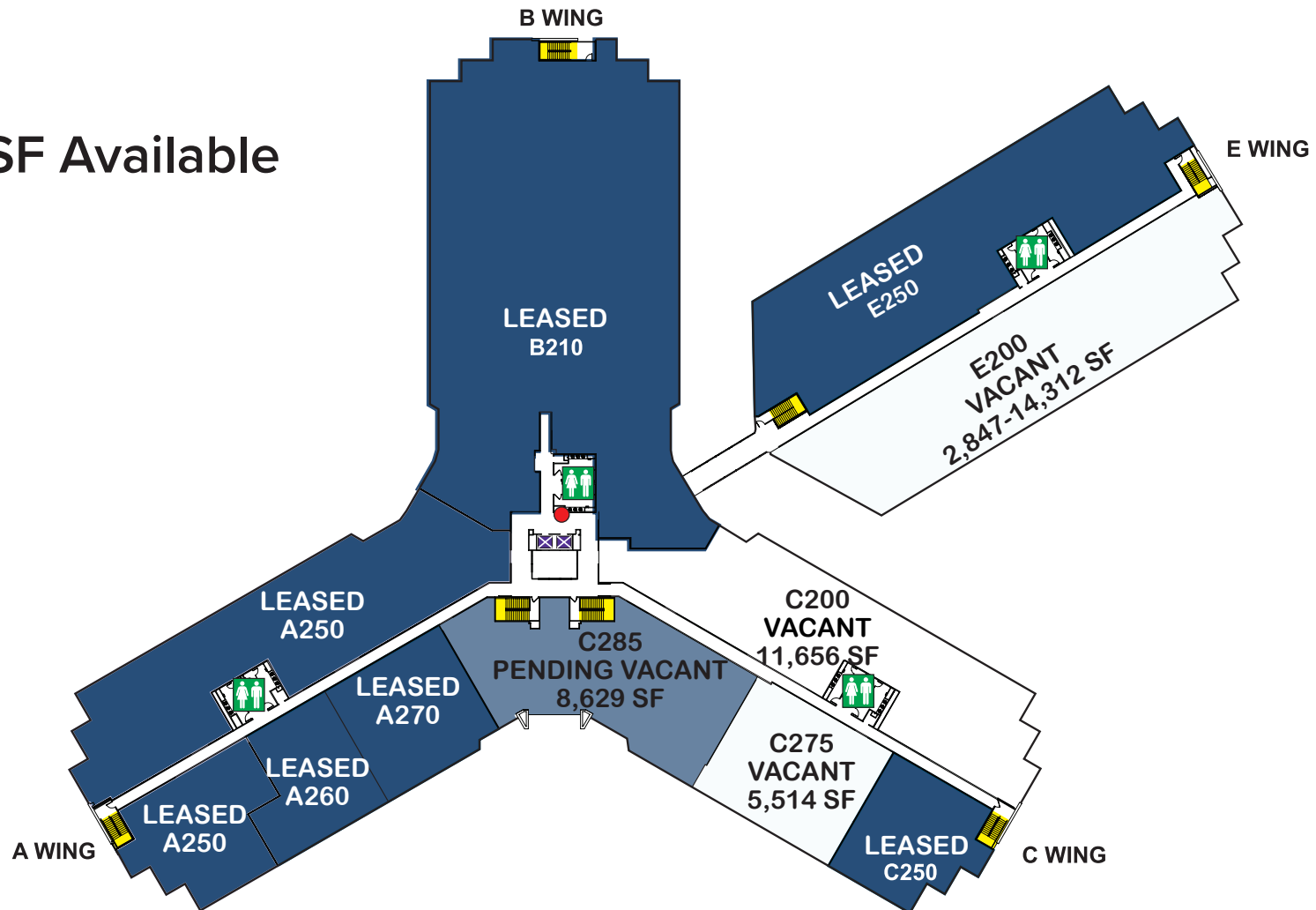


1st Floor Spec Suite | 9,304 SF

Fully built-out and ready to move-in Spec Suite is located on the 1st floor right next to the spacious, 150-seat conference center.



2nd Floor
2,847 SF - 14,312 SF Available





WESTVIEW
CORPORATE CENTER



Contact us for office leasing:

Bob Dickman

Principal

301.417.1091

bob.dickman@avisionyoung.com

Bob Wrightson

Senior Vice President

301.417.1063

bob.wrightson@avisionyoung.com

Connor Wrightson

Senior Associate

301.417.1088

connor.wrightson@avisionyoung.com

11921 Rockville Pike, Suite 200, Rockville, MD 20852
avisionyoung.com | 301.948.9870

© 2024. Avison Young Washington, DC LLC. All Rights Reserved. The information provided herein was obtained from sources deemed reliable and believed to be true; it has not been verified and as such cannot be warranted nor represent any part of any future contract.

