



251 EAST 33RD STREET

BETWEEN 2ND & 3RD AVENUES

SELLING LOWER LEVEL | PERFECT FOR FITNESS, PHYSICAL THERAPIST, AND MEDICAL

251 EAST 33RD STREET - LOWER LEVEL

BETWEEN 2ND & 3RD AVENUES



SIZE

LOWER LEVEL | 2,720 SQFT

POSSESSION

Immediate

TERM

Long-term

ASKING RENT

Upon request

AVAILABILITY

Immediate

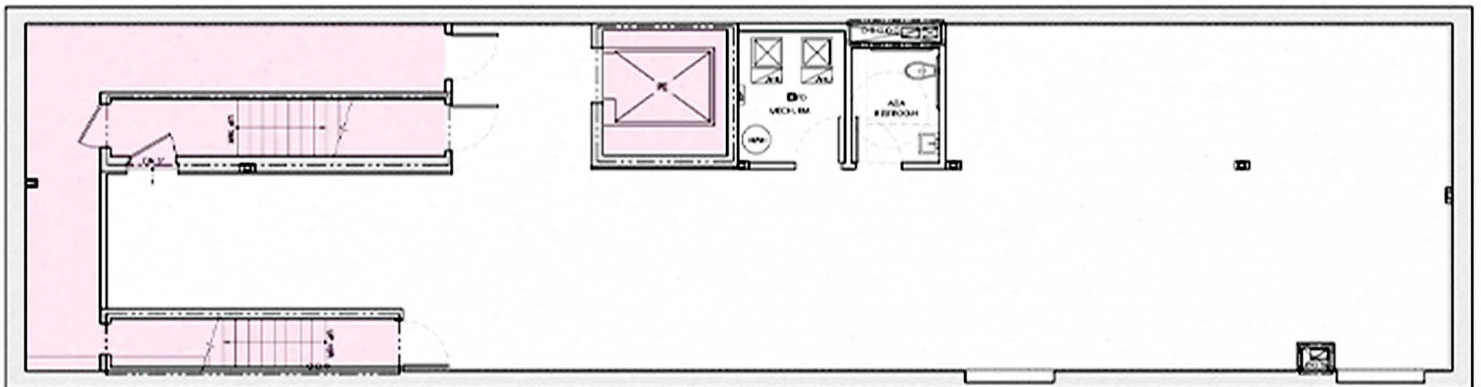
TRANSPORTATION

6, M34 Bus

TOP FEATURES

- Selling Lower Level
- Elevator access for ADA accessibility
- ADA Bathroom in place
- Direct access from the street
- Prime location with close proximity to the Medical and Life Sciences Corridor including NYU Medical Center, Alexandria Center for Life Sciences, Bellevue Medical Center and more.

CURRENT OPEN FLOOR PLAN



GEORGE WRIGHT

917.363.7072

george@realnyproperties.com

QUINN WANG

917.868.6552

quinn@realnyproperties.com

REALNY | COMMERCIAL