

LEASE OPPORTUNITY AVAILABLE



100 & 200 West 22nd Street  
Lombard, Illinois 60148

One Oakbrook Terrace  
Suite 400  
Oakbrook Terrace, Illinois 60181  
+1 630 932 1234

[hiffman.com](http://hiffman.com)

PROPERTY HIGHLIGHTS

Greenbrook Executive Center offers an ideal location in the heart of DuPage County with close access to major expressways including I-355, I-88, and Butterfield Road.



AVAILABLE SPACE:  
2,296 - 9,974 SF



SINGLE STORY WITH  
COMMON AREA  
RESTROOMS

**Contact**

Jason Wurtz  
+1 630 693 0692  
jwurtz@hiffman.com


Sarah Walker  
+1 630 389 8911  
swalker@hiffman.com




TURN-KEY  
OPPORTUNITIES



BUILDING  
CONFERRING



ON-SITE MEXICAN  
RESTAURANT



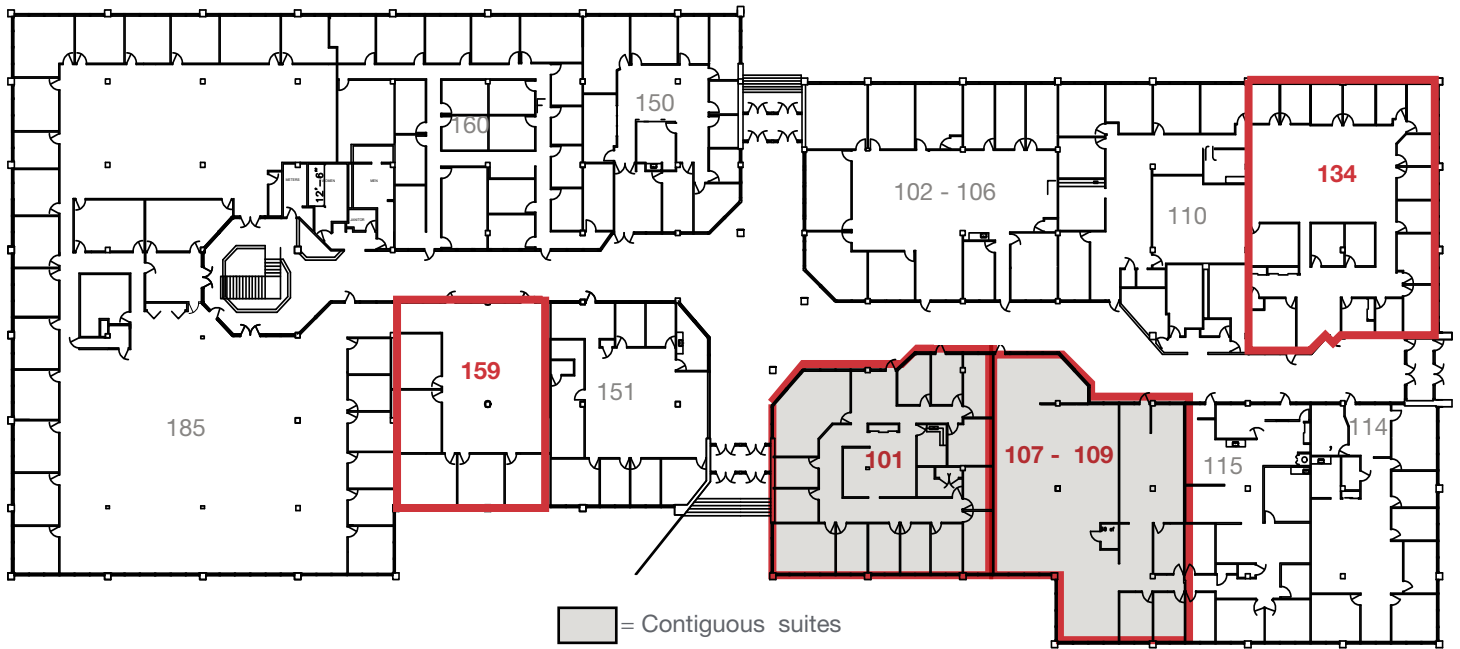
MINUTES FROM  
SHOPPING AT  
YORKTOWN CENTER

NO WARRANTY OR REPRESENTATION, EXPRESS OR IMPLIED, IS MADE AS TO THE ACCURACY OF THE INFORMATION CONTAINED HEREIN, AND THE SAME IS SUBMITTED SUBJECT TO ERRORS, OMISSIONS, CHANGE OF PRICE, RENTAL OR OTHER CONDITIONS, PRIOR SALE, LEASE OR FINANCING, OR WITHDRAWAL WITHOUT NOTICE, AND OF ANY SPECIAL LISTING CONDITIONS IMPOSED BY OUR PRINCIPALS NO WARRANTIES OR REPRESENTATIONS ARE MADE AS TO THE CONDITION OF THE PROPERTY OR ANY HAZARDS CONTAINED THEREIN ARE ANY TO BE IMPLIED.

# 100 WEST 22ND ST

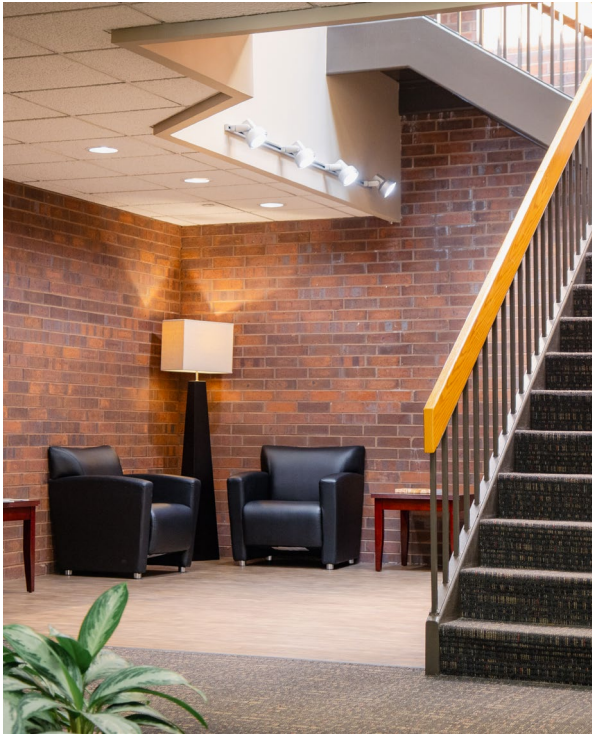
## Available Suites

Suite 101	4,995 - 9,974 SF
Suite 107 - 109	4,979 - 9,974 SF
Suite 134	5,314 SF
Suite 159	3,491 SF



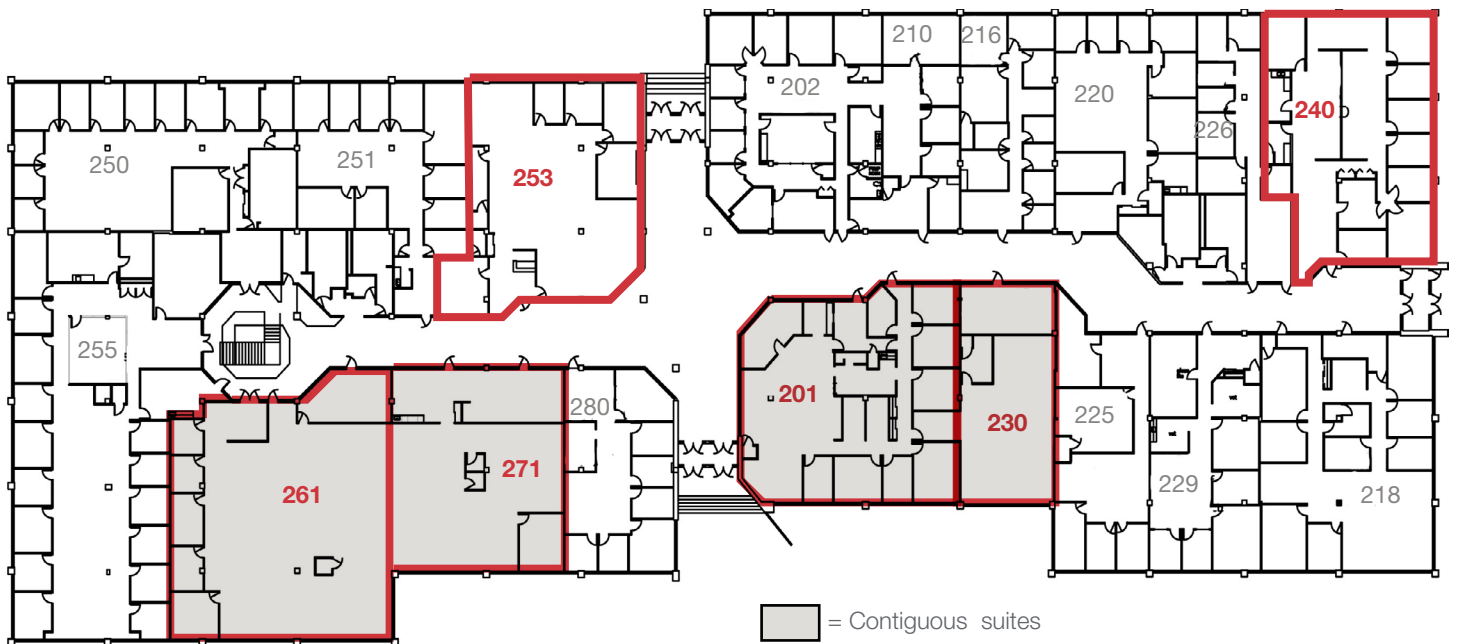


# 200 WEST 22ND ST



## Available Suites

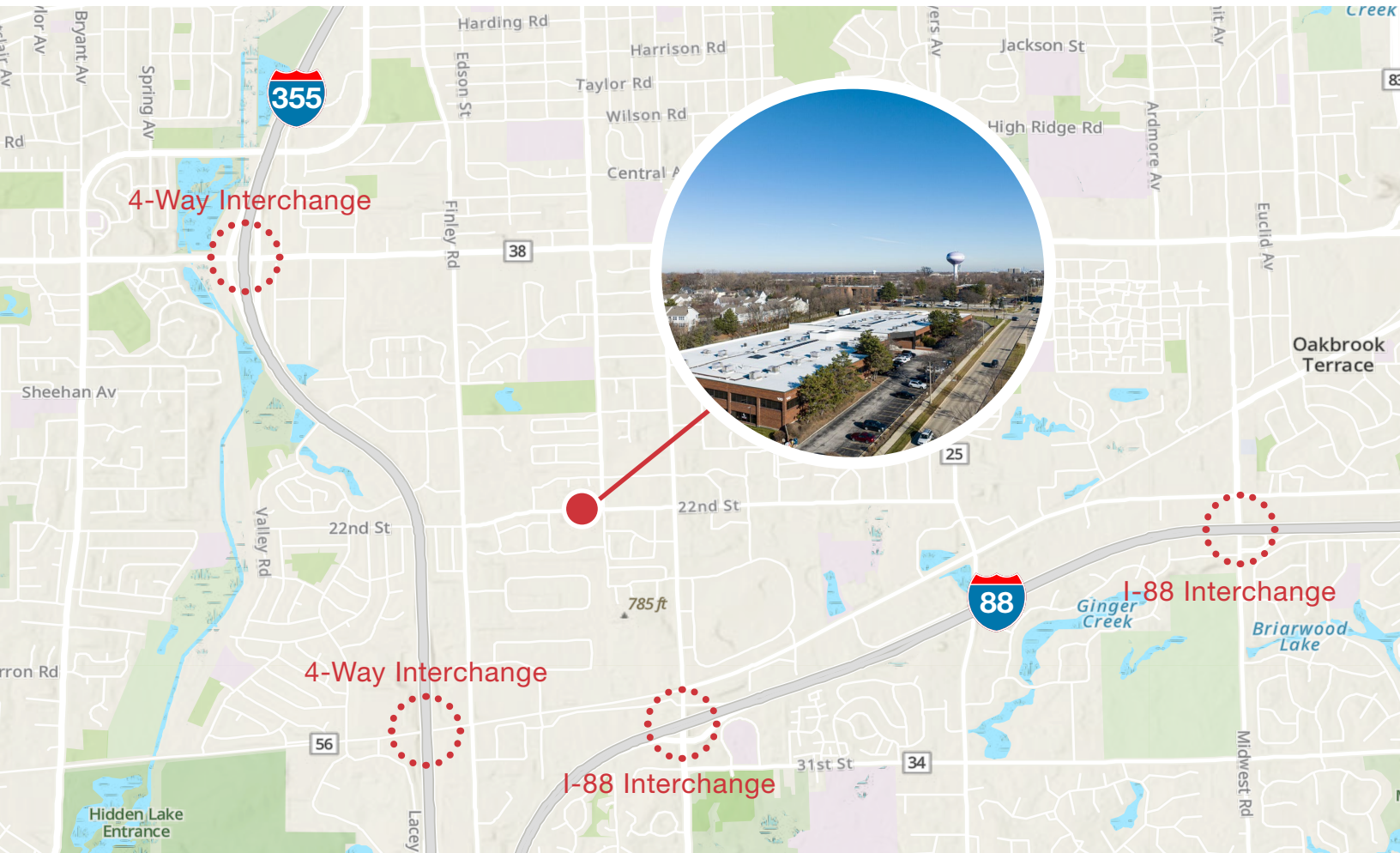
Suite 201/230	2,296 - 7,259 SF
Suite 240	4,443 SF
Suite 253	4,317 SF
Suite 261	6,010 - 9,850 SF
Suite 271	3,840 - 9,850 SF





## LOCATION, LOCATION, LOCATION

Immediate Access to the Areas' Best Amenities including Restaurants, Shopping, Hotels, and Public Transportation.



One Oakbrook Terrace  
Suite 400  
Oakbrook Terrace, Illinois 60181  
+1 630 932 1234



[hiffman.com](http://hiffman.com)