

CLEVELAND PARK BUSINESS CENTER
5741 CLEVELAND STREET

SUITE 240, VIRGINIA BEACH, VA 23462

1,100 SF FOR SALE OR LEASE



ROB WRIGHT
Senior Vice President
757 499 2896
rob.wright@thalhimer.com

The Town Center of Virginia Beach
222 Central Park Avenue, Suite 1500
Virginia Beach, Virginia 23462
757 499 2900 | www.thalhimer.com



PROPERTY DETAILS

MEDICAL OFFICE CONDOMINIUM:	SUITE 240
AVAILABLE SPACE:	1,100 SF
FOR SALE:	\$286,000
FOR LEASE:	\$23.00 PSF, Full Service

- Three large offices and/or conference rooms (*abundance of natural light*)
- Kitchenette/breakroom
- Reception area with counter
- Private restroom
- Server room/storage closet
- Workroom
- New floors
- Existing FF&E can be included

BUILDING SPECS

Property Size:	24,000 SF, 1.79 Acres
Year Built:	2006
Stories:	Three
Parking	93 Surface spaces; 5/1,000 SF
Signage	Interstate visibility/exposure
Zoning	O-2

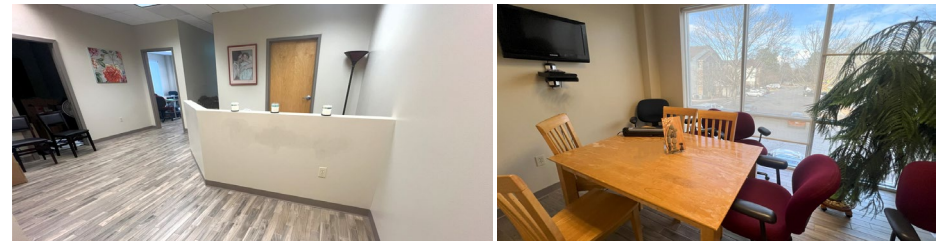
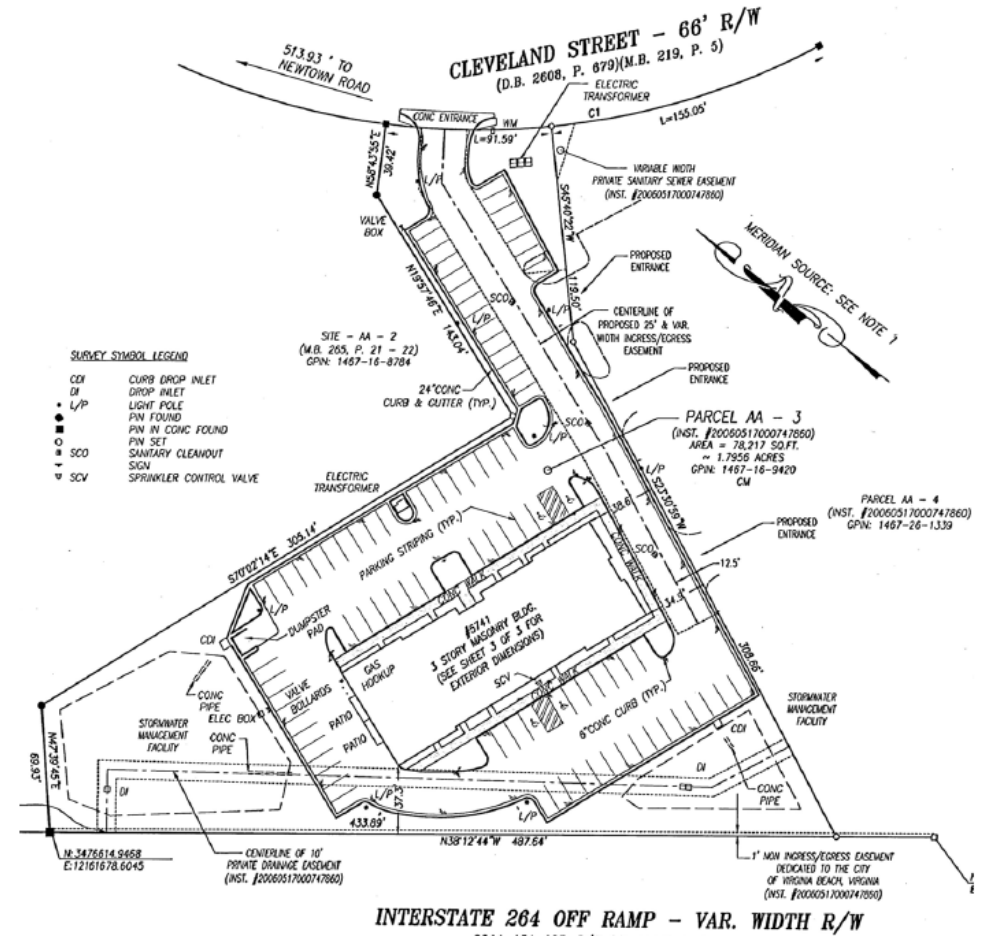
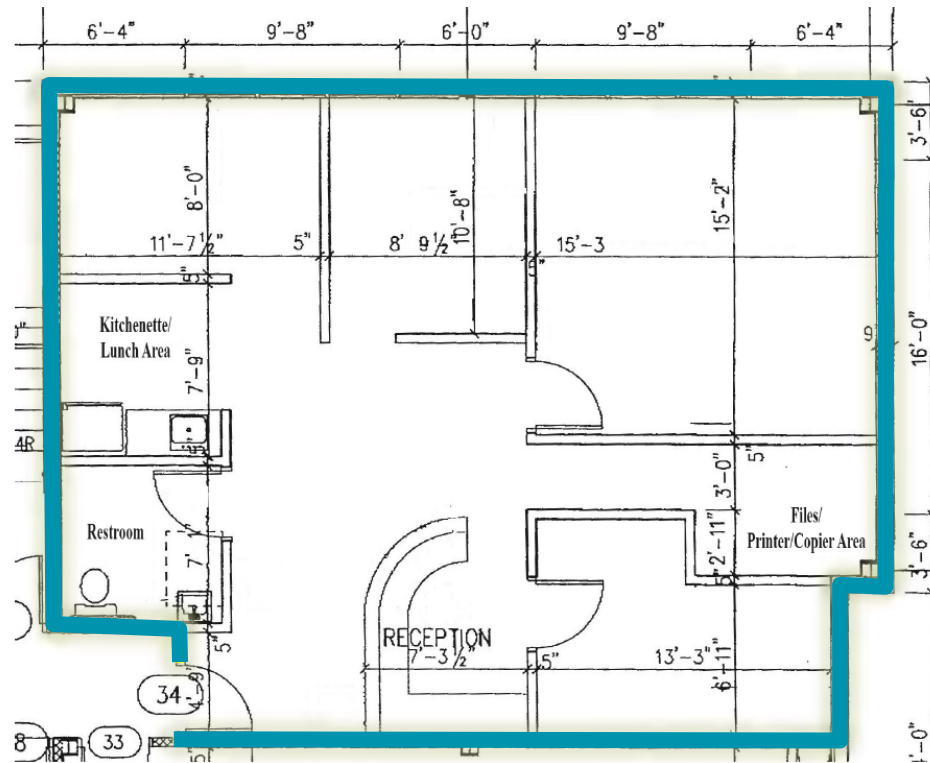
BUILDING AMMENITIES

- High Ceilings
- Plug & Play
- Signage
- Security system: Elevator lock-out control
- Desirable medical corridor anchored by Sentara Leigh Hospital
- Immediate access to I-264 at Newtown Road; and I-64



PROPERTY FEATURES

SECOND FLOOR PLAN - SUITE 240



SURROUNDING AREA



ROB WRIGHT
Senior Vice President
757 499 2896
rob.wright@thalhimer.com

The Town Center of Virginia Beach
222 Central Park Avenue, Suite 1500
Virginia Beach, Virginia 23462
757 499 2900 | www.thalhimer.com



Independently Owned and Operated / A Member of the Cushman & Wakefield Alliance
Cushman Wakefield | Thalhimer ©2025. No warranty or representation, express or implied, is made to the accuracy or completeness of the information contained herein, and same is submitted subject to errors, omissions, change of price, rental or other conditions, withdrawal without notice, and to any special listing conditions, imposed by the property owner(s). As applicable, we make no representation as to the condition of the property (or properties) in question.