

# Park Place

7 NE 10<sup>th</sup> St

Oklahoma City, OK



3±  
ACRES

FOR SALE or  
BUILD-TO-SUIT

For Sale or Build-to-Suit

CBRE

# Park Place

Asking Price: Call broker for pricing



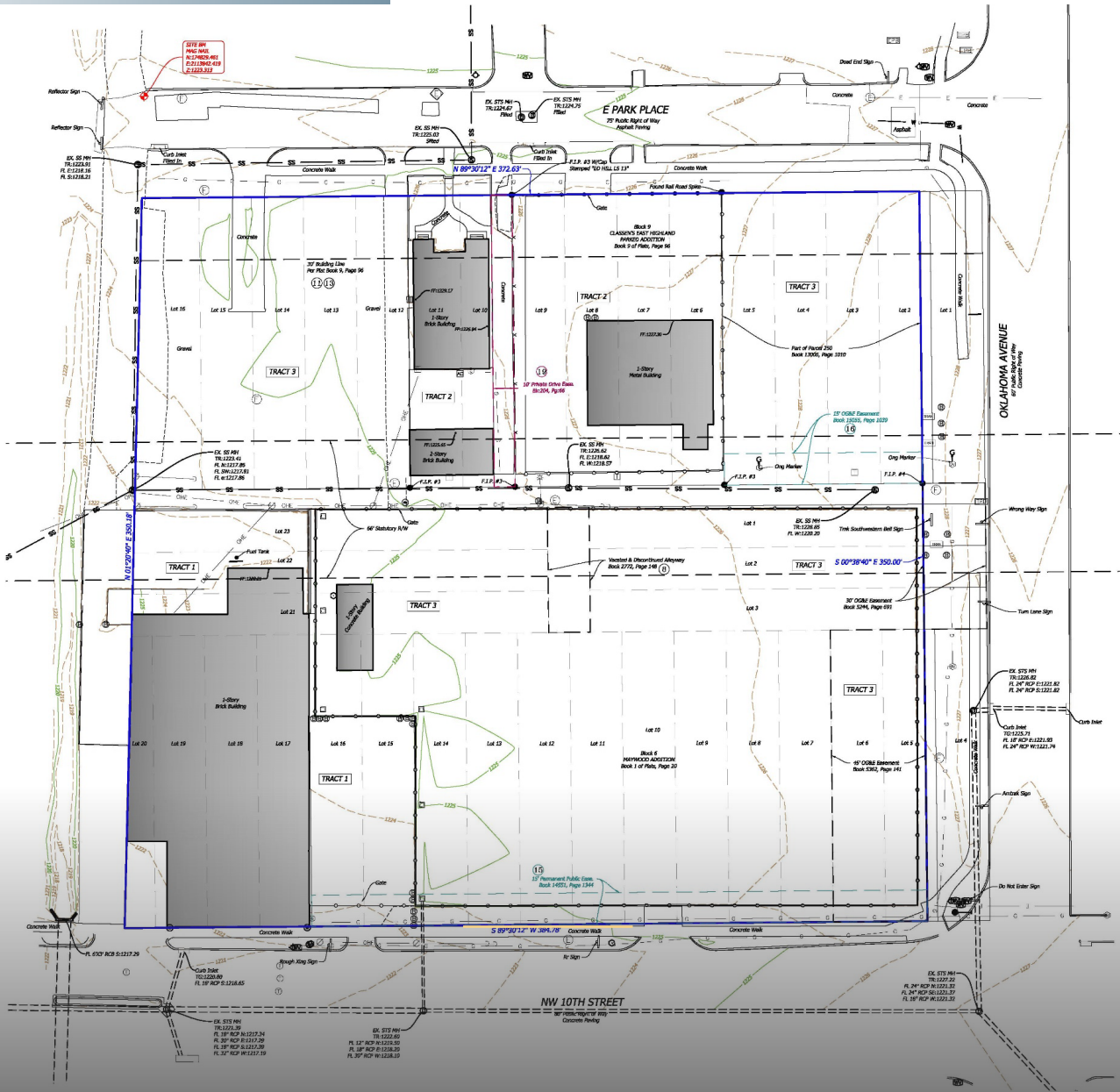
## THE OFFERING

Park Place is a high-density, mixed-use development opportunity located at the gateway to the urban core. The dynamic DBD zoning includes residential, hospitality and commercial uses in a single location.

### PROPERTY OVERVIEW

**Land Size** 3± Acres

**Zoning** Downtown Business District (DBD)



NE 10th  
Street

**SURVEY**

# CONCEPTUAL DEVELOPMENT PLANS

[SEE MORE](#)

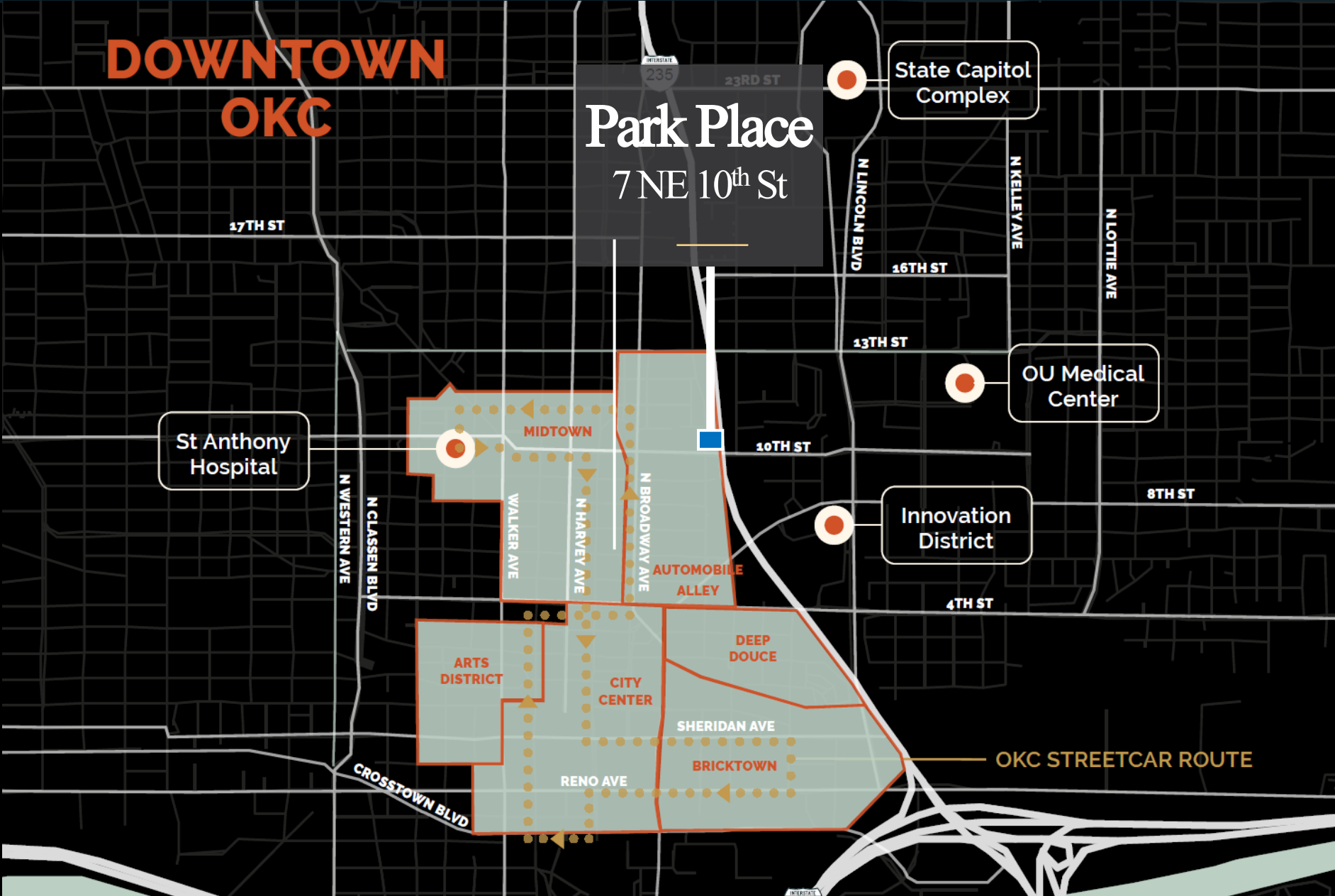


**Miller** ARCHITECTURE | DEVELOPMENT

# AERIAL



# WELL-PLACED, WELL-CONNECTED





**Amy Dunn**  
First Vice President  
+1 405 209 3656  
amy.dunn@cbre.com

---

**Park Place**  
7 NE 10<sup>th</sup> St  
OKLAHOMA CITY, OK

**CBRE**

© 2026 CBRE, Inc. All rights reserved. This information has been obtained from sources believed reliable but has not been verified for accuracy or completeness. You should conduct a careful, independent investigation of the property and verify all information. Any reliance on this information is solely at your own risk. CBRE and the CBRE logo are service marks of CBRE, Inc. All other marks displayed on this document are the property of their respective owners, and the use of such logos does not imply any affiliation with or endorsement of CBRE. Photos herein are the property of their respective owners. Use of these images without the express written consent of the owner is prohibited.