

3125

BASS PRO DRIVE

Grapevine, TX 76051

FOR SALE | +/- 20,602 SF



4851 LBJ Fwy, 10th Floor
Dallas, TX 75244

Nick Lee, SIOR, CCIM
(214) 256-7121
nlee@nairl.com

Lexis Norton
(214) 256-7108
lnorton@nairl.com



Drive Times

03
miles to
DFW Airport

22
miles to
Downtown Dallas

27
miles to
Downtown Fort Worth



Property Features

Class A Office or Flex

Free Standing

High End Finishes

Exposed Ceiling

Extensive Outdoor Space with Patio

+/- 16,602 SF of Office

+/- 2,000 SF of 2 Story Mezzanine (4,000 sf total) lab/storage with 9' clear

+/- 2,000 SF of lab/warehouse space with 20' clear and 1 grade level door

Property Photos



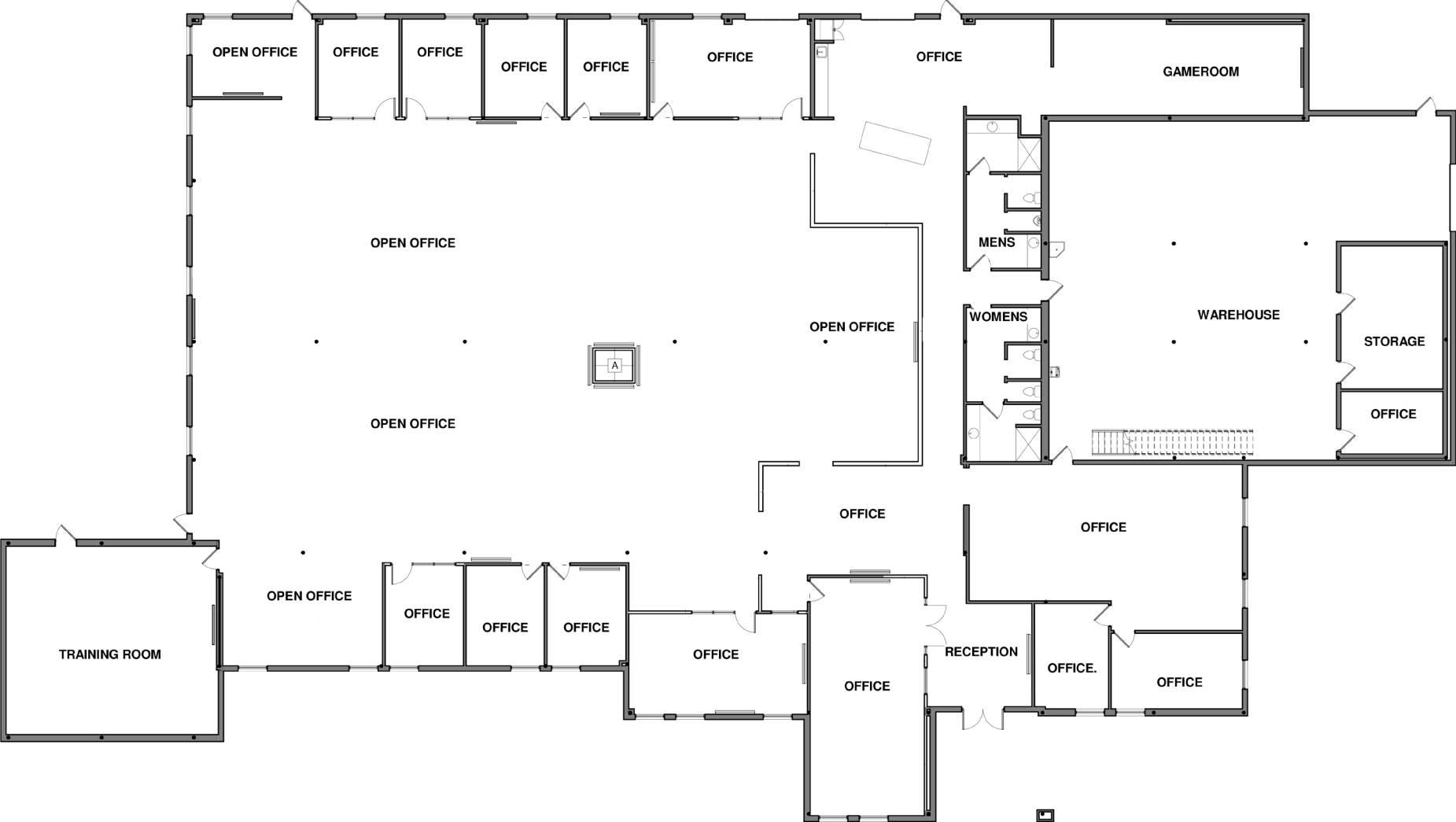
Property Photos



Exterior Aerials



Floor Plan



3125 BASS PRO DRIVE

Grapevine, TX 76051

FOR SALE | +/- 20,602 SF



4851 LBJ Fwy, 10th Floor
Dallas, TX 75244

THE INFORMATION CONTAINED HEREIN HAS BEEN GIVEN TO US BY THE OWNER OF THE PROPERTY OR OTHER SOURCES WE DEEM RELIABLE. WE HAVE NO REASON TO DOUBT ITS ACCURACY, BUT WE DO NOT GUARANTEE IT. ALL INFORMATION SHOULD BE VERIFIED PRIOR TO PURCHASE OR LEASE.

Nick Lee, SIOR, CCIM
(214) 256-7121
nlee@nairl.com

Lexis Norton
(214) 256-7108
lnorton@nairl.com