



2949 N 170 E

Spanish Fork, Utah

Key facts

Property type	Industrial space
Building size	280,980 SF
Space available	280,980 SF



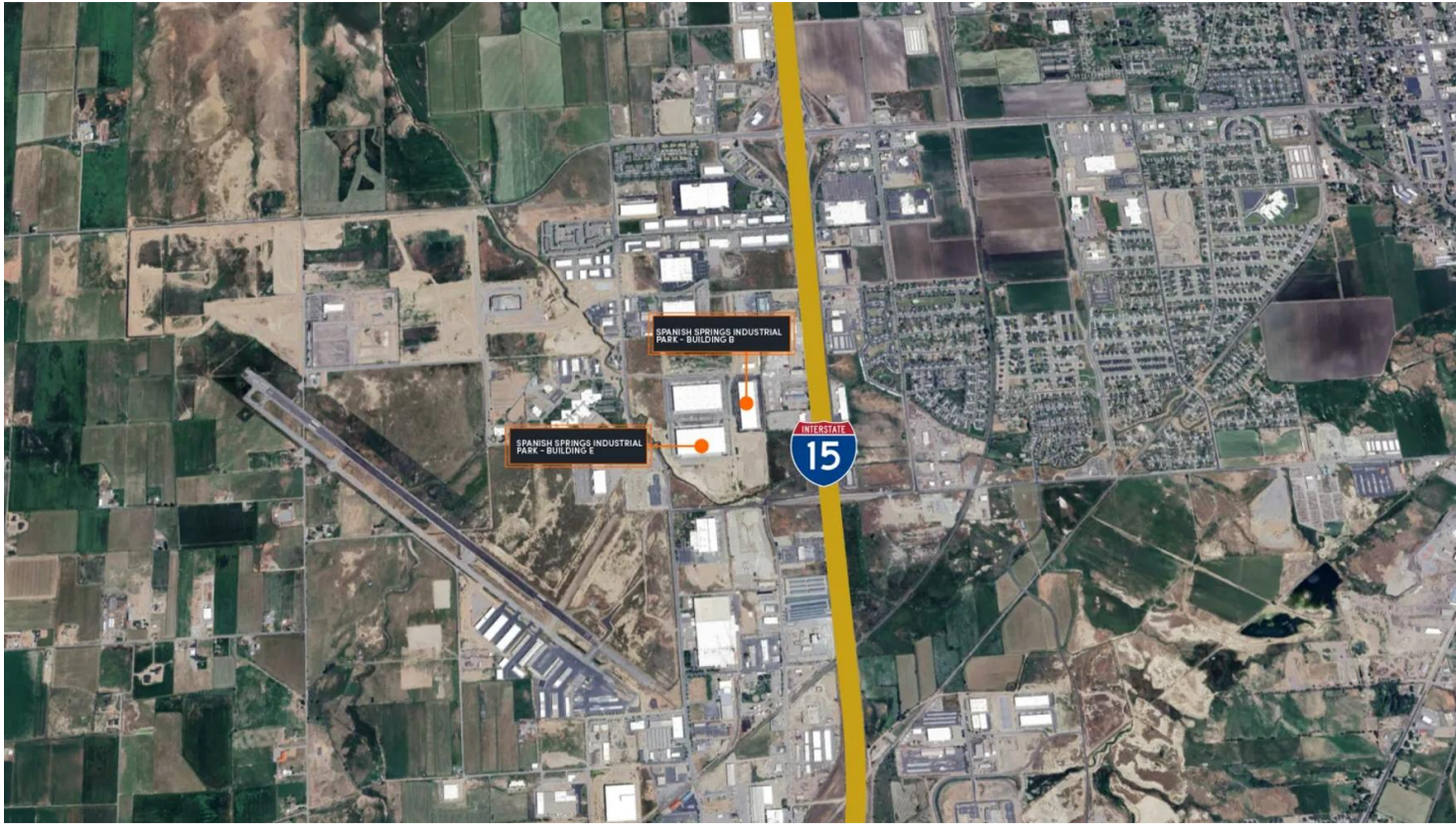
Property Features

Drive In Doors: 4	Auto Parking: 209
Construction Type: Concrete Tilt-up	Building Depth: 400'
Sprinkler System: ESFR	Clear Height: 36'
Configuration: Cross-Dock	Truck Court: 120'-185'
Truck Parking: 42	Dock Doors: 69

Photos and floorplans







Location

Population

Total Population	200,011
Total Labor Force	91,543
Unemployment Rate	
Median Household Income	\$83,115
Warehouse Employees	549
High School Education	51.7%

Contact us

Learn more about this property or schedule a tour by reaching out to our local investment and leasing officer.

Will Clark

+1 (385) 454-2565 will.clark@eqtpartners.com