

# MURRAY OFFICE SPACE

5263 S. COMMERCE DRIVE, MURRAY, UT 84107

**LEASE RATE: \$18.00/SF FS**



## PROPERTY INFORMATION

- ✓ Suite 150: 6,500 RSF
- ✓ Building Signage Available
- ✓ Immediate Access To I-15
- ✓ Year Built: 1986
- ✓ Near Many retail & Restaurant Amenities
- ✓ Tons Of Natural Light - Floor To Ceiling Windows
- ✓ Utopia Fiber Available
- ✓ Parking: 3/1,000 SF



## CONTACT US

**KELLEN KONCAR**

✉ kellen@cresutah.com

☎ 801.824.1311

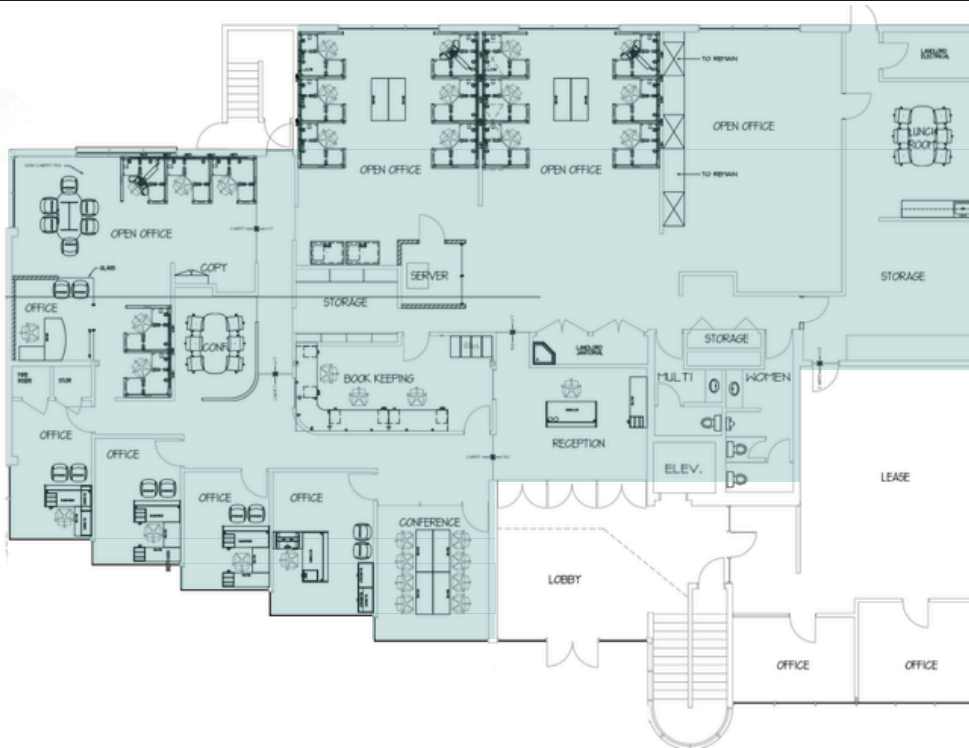
🌐 www.cresutah.com

Call Us  
**801.876.6070**



# MURRAY OFFICE SPACE

5263 S. COMMERCE DRIVE, MURRAY, UT 84107



This information is given with the understanding that all negotiations and/or real estate activity related to the property described above shall be conducted through this CRES office. The above information while not guaranteed, was obtained from sources we believe to be reliable.

**CONTACT US**

Call Us

**801.876.6070**



**KELLEN KONCAR**

✉ kellen@cresutah.com ☎ 801.824.1311 🌐 www.cresutah.com