

LAND FOR SALE & LEASE

METRO AIR PARK LAND FOR SALE & LEASE

2264 MEISTER WAY

SACRAMENTO, CA 95837



LAND FOR SALE & LEASE - 3 TO 14 ACRES

COMMERCIAL NNN LEASE

1501 Secret Ravine Pkwy.
Roseville, California 95661



PRESENTED BY:

CONNIE BRADLEY

Broker | President
office: (707) 484-1091
cell: (707) 484-1091
cb@commercialnnlease.com
01034413, California

The calculations and data presented are deemed to be accurate, but not guaranteed. They are intended for the purpose of illustrative projections and analysis. The information provided is not intended to replace or serve as substitute for any legal, accounting, investment, real estate, tax or other professional advice, consultation or service. The user of this software should consult with a professional in the respective legal, accounting, tax or other professional area before making any decisions.

PROPERTY SUMMARY

Metro Air Park Land for Lease
2264 Meister Way | Sacramento, CA 95837



Property Summary

Lot Size:	3 to 14 Acres
Sale Price:	Call for details
Lease Rate:	Call for details
Zoning:	Special Planning Area (SPA)
APN:	201-1020-153

Property Overview

Presenting a rare opportunity to acquire up to ±14 acres of prime land within Sacramento's premier industrial and commercial hub—Metro Air Park. This highly visible parcel is zoned SPA (Special Planning Area), allowing for a wide range of commercial and industrial uses. Strategically located with access points from Meister Way and future Road "F", the site offers excellent connectivity to major regional transportation corridors, including Interstate 5, Highway 99, and Sacramento International Airport. The Meister Way Improvement Project from Bear Paw Drive to Lone Tree Road is tentatively scheduled to begin as soon as September 2025. The property may be offered as a full ±14-acre site or potentially subdivided into parcels ranging from ±3 to ±14 acres, providing flexibility to accommodate single or multiple users.

Location Overview

Metro Air Park is Sacramento's premier master-planned business park, strategically located spanning over 1,800 acres, the park is home to a growing number of global and national brands, including Amazon, Costco, and UPS, making it one of the most sought-after logistics and commercial hubs in Northern California.

PROPOSED SITE PLAN

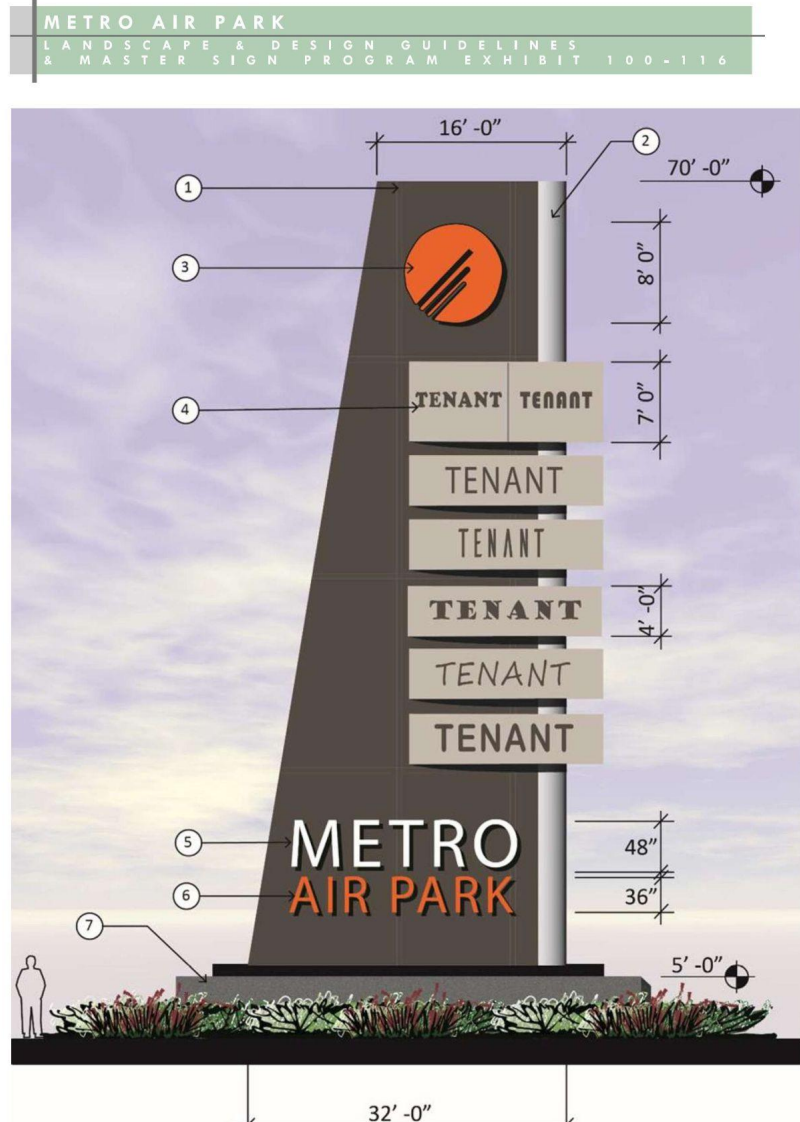
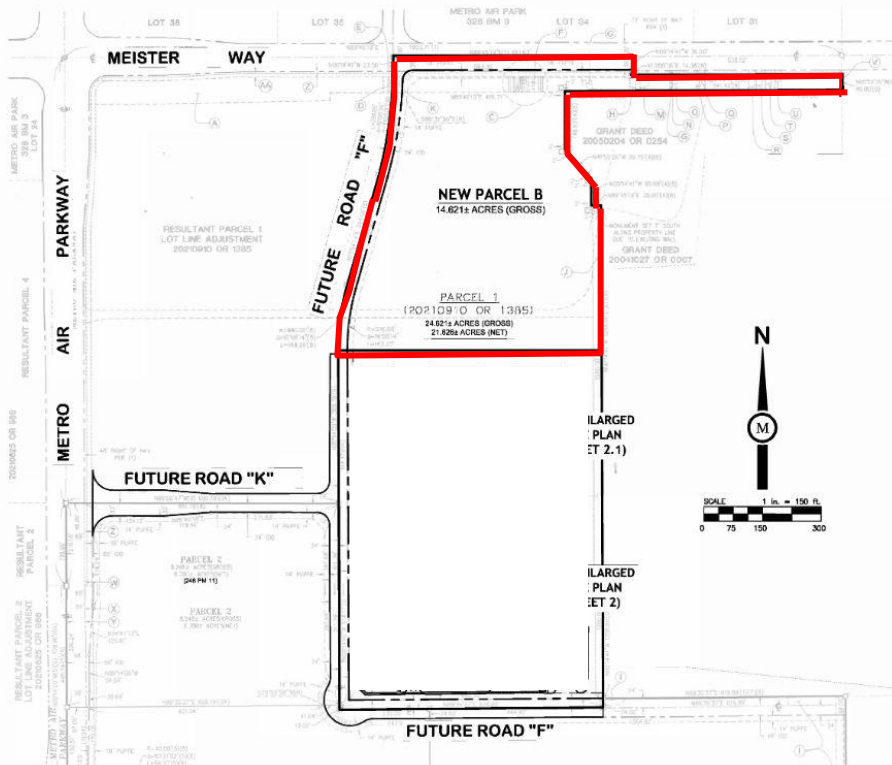
Metro Air Park Land for Sale & Lease

2264 Meister Way | Sacramento, CA 95837

Metro Air Park Travel Center

2264 MEISTER WAY, SACRAMENTO, CA 95835
SACRAMENTO COUNTY

APN 201-1020-153-0000
Parcel 1 (248 PM 11)



CONNIE BRADLEY

(707) 484-1091

cb@commercialnnnlease.com

CIRCULATION & ZONING MAPS

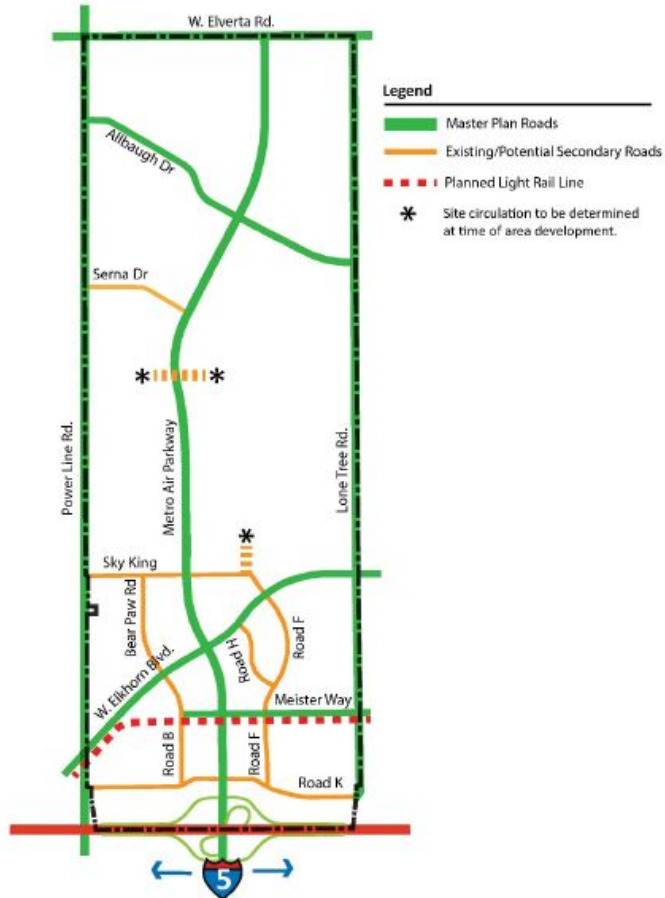
Metro Air Park Land for Sale & Lease
2264 Meister Way | Sacramento, CA 95837

Zoning Code of Sacramento County

Title V: Special Planning Areas and Neighborhood Preservation Areas

Chap

Exhibit 100-115 (Amended 9-23-22) METRO AIR PARK CIRCULATION PLAN



METRO AIR PARK
CIRCULATION PLAN

EXHIBIT 100-115



32

CONNIE BRADLEY
(707) 484-1091
cb@commercialnnnlease.com

Zoning Code of Sacramento County

Title V: Special Planning Areas and Neighborhood Preservation Areas

Chapter 5 Article 3



METRO AIR PARK
PROPOSED LAND USES

EXHIBIT 100-114



31



METRO AIR PARK OVERVIEW

Metro Air Park Land for Sale & Lease
2264 Meister Way | Sacramento, CA 95837

Metro Air Park is a Master Planned Business Park with over 1,800 acres that are fully entitled and is the region's premier logistics site and a focal point of industrial development. Metro Air Park has seen unprecedented growth. Major corporate occupiers such as Amazon, SC Johnson, Target, UPS, General Produce, Orca Bio, McDonald Wholesale and Golden Brands all have a significant presence in the park.

This thoughtfully planned development will feature a diverse mix of uses, including hotel accommodations, storage facilities, office space, and a wide array of commercial services. Anchored by major national retailers and supported by junior anchors and popular quick-service restaurants (QSRs), the project also includes shop space options tailored to serve the daily needs of the surrounding community.

Ideally located near ±3,000 new homes currently under construction—with thousands more in planning—the site offers unmatched visibility, accessibility, and long-term growth potential.

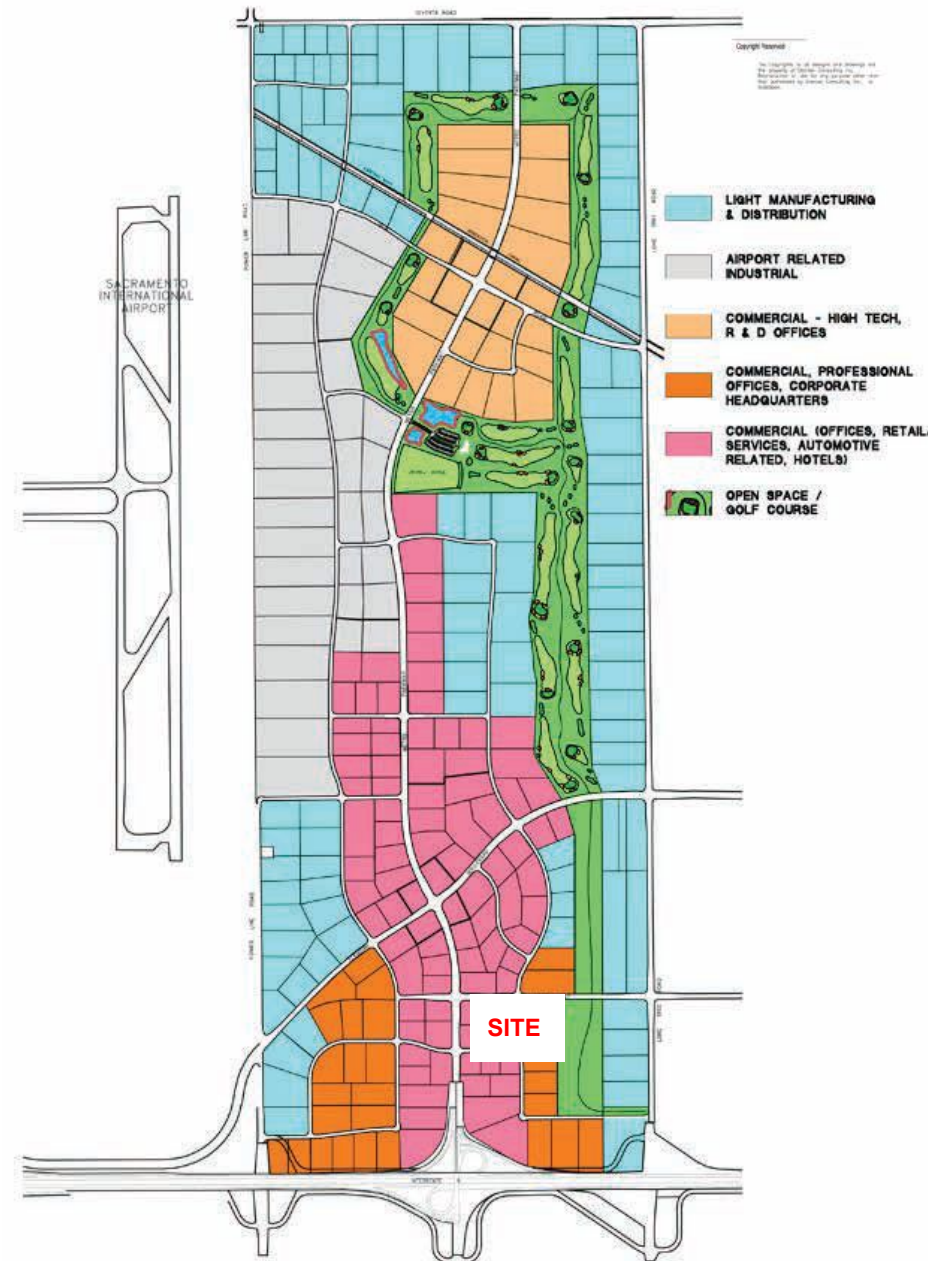
INFRASTRUCTURE SUMMARY

- Metro Air Park is in the #5 Water Zone and purchases water from the City of Sacramento.
- Sewer is 18" Main, 8" Distribution from Sacramento Area Sewer District
- 12" Water Main from Sacramento County Water Agency
- 12 kV Electrical Line from Sacramento Municipal Utility District

CONNIE BRADLEY

(707) 484-1091

cb@commercialnnnlease.com



REGIONAL MAP

Metro Air Park Land for Sale & Lease

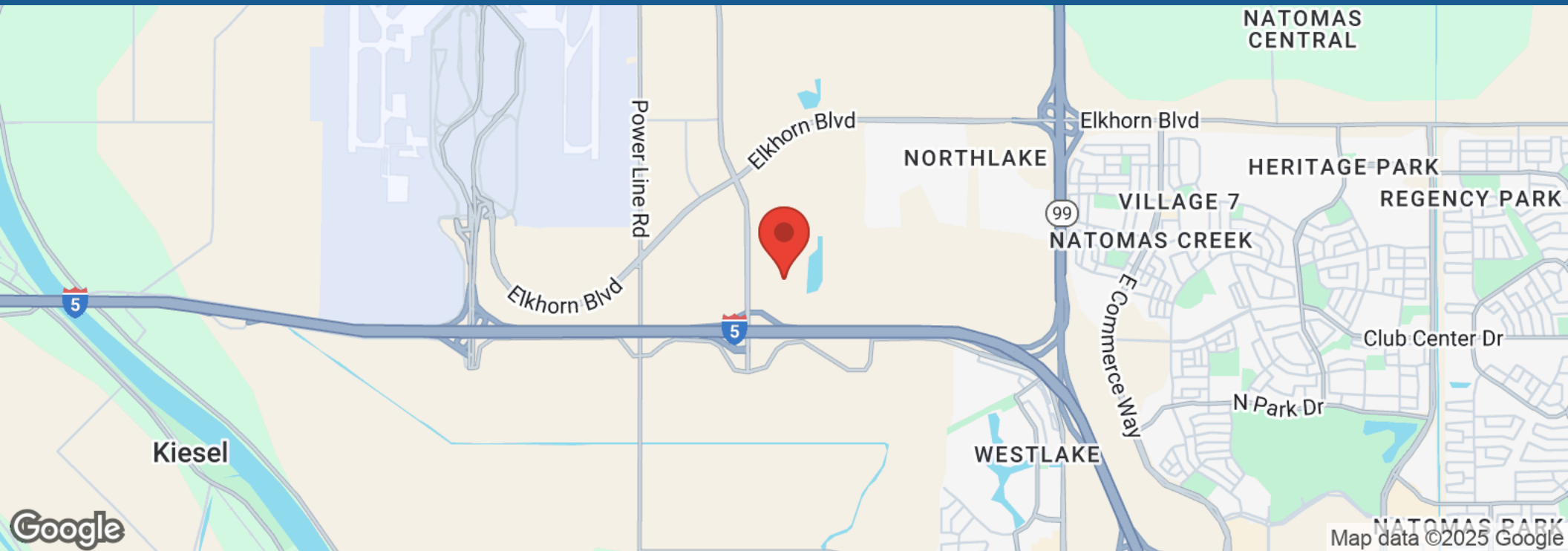
2264 Meister Way | Sacramento, CA 95837



LOCATION MAPS

Metro Air Park Land for Sale & Lease

2264 Meister Way | Sacramento, CA 95837



BUSINESS MAP

Metro Air Park Land for Sale & Lease

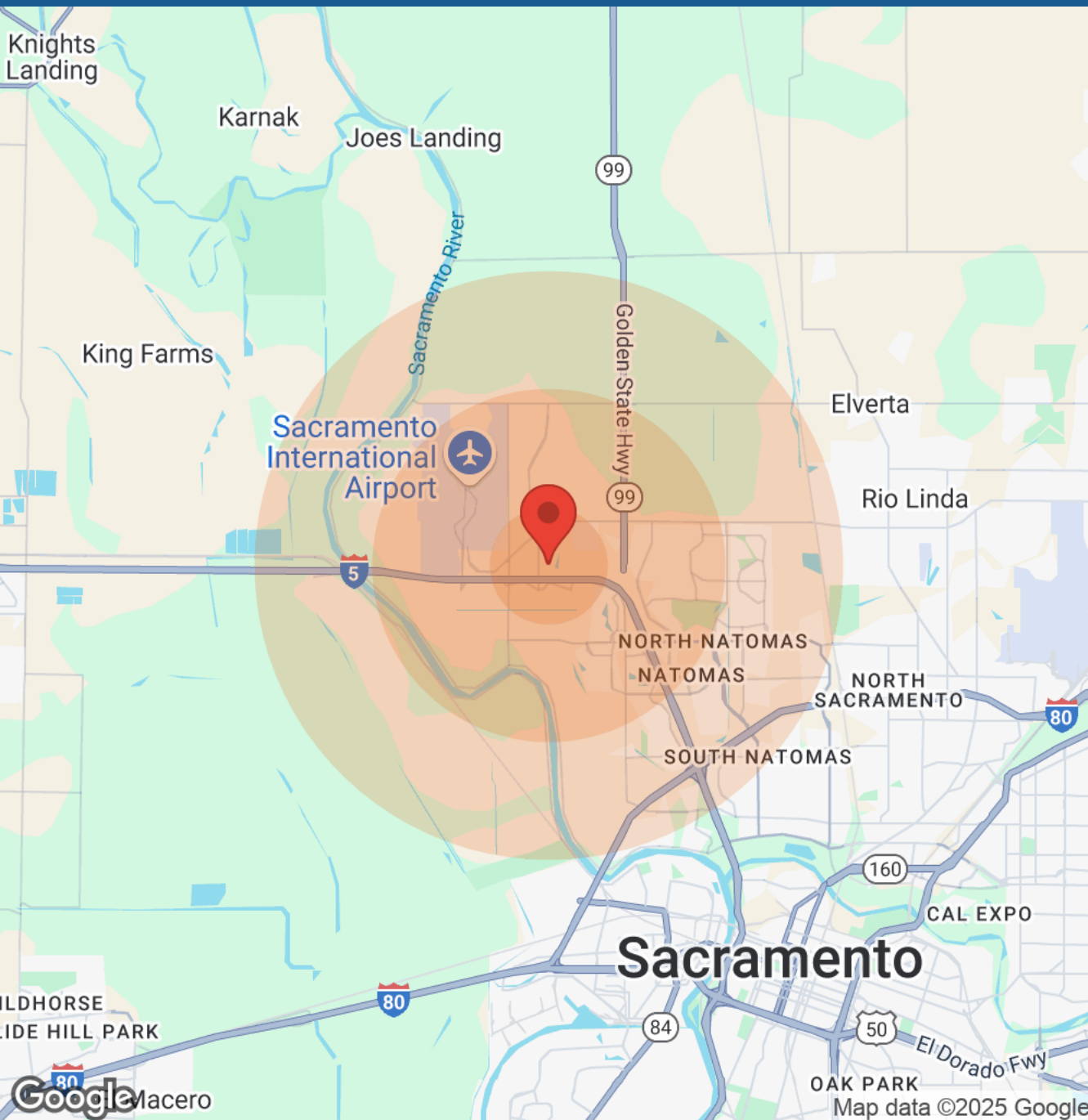
2264 Meister Way | Sacramento, CA 95837



DEMOGRAPHICS

Metro Air Park Land for Sale & Lease

2264 Meister Way | Sacramento, CA 95837



Population	1 Mile	3 Miles	5 Miles
Male	N/A	18,278	42,819
Female	N/A	18,627	44,157
Total Population	N/A	36,905	86,976

Age	1 Mile	3 Miles	5 Miles
Ages 0-14	N/A	8,336	20,417
Ages 15-24	N/A	4,187	10,858
Ages 25-54	N/A	15,596	33,981
Ages 55-64	N/A	4,088	9,303
Ages 65+	N/A	4,698	12,417

Race	1 Mile	3 Miles	5 Miles
White	N/A	16,826	39,881
Black	N/A	4,524	11,196
Am In/AK Nat	N/A	36	158
Hawaiian	N/A	95	248
Hispanic	N/A	5,681	18,831
Multi-Racial	N/A	10,284	32,000

Income	1 Mile	3 Miles	5 Miles
Median	N/A	\$87,656	\$75,048
< \$15,000	N/A	658	2,068
\$15,000-\$24,999	N/A	800	1,925
\$25,000-\$34,999	N/A	876	2,436
\$35,000-\$49,999	N/A	1,519	3,850
\$50,000-\$74,999	N/A	2,784	6,677
\$75,000-\$99,999	N/A	2,315	4,955
\$100,000-\$149,999	N/A	2,922	6,003
\$150,000-\$199,999	N/A	1,516	2,775
> \$200,000	N/A	610	1,408

Housing	1 Mile	3 Miles	5 Miles
Total Units	N/A	13,286	31,176
Occupied	N/A	12,323	29,060
Owner Occupied	N/A	7,163	15,905
Renter Occupied	N/A	5,160	13,155
Vacant	N/A	963	2,116

CONNIE BRADLEY

(707) 484-1091

cb@commercialnnnlease.com



DISCLAIMER

Metro Air Park Land for Sale & Lease
2264 Meister Way | Sacramento, CA 95837

All materials and information received or derived from Commercial NNN Lease its directors, officers, agents, advisors, affiliates and/or any third party sources are provided without representation or warranty as to completeness, veracity, or accuracy, condition of the property, compliance or lack of compliance with applicable governmental requirements, developability or suitability, financial performance of the property, projected financial performance of the property for any party's intended use or any and all other matters.

Neither Commercial NNN Lease its directors, officers, agents, advisors, or affiliates makes any representation or warranty, express or implied, as to accuracy or completeness of the materials or information provided, derived, or received. Materials and information from any source, whether written or verbal, that may be furnished for review are not a substitute for a party's active conduct of its own due diligence to determine these and other matters of significance to such party. Commercial NNN Lease will not investigate or verify any such matters or conduct due diligence for a party unless otherwise agreed in writing.

EACH PARTY SHALL CONDUCT ITS OWN INDEPENDENT INVESTIGATION AND DUE DILIGENCE.

Any party contemplating or under contract or in escrow for a transaction is urged to verify all information and to conduct their own inspections and investigations including through appropriate third-party independent professionals selected by such party. All financial data should be verified by the party including by obtaining and reading applicable documents and reports and consulting appropriate independent professionals. Commercial NNN Lease makes no warranties and/or representations regarding the veracity, completeness, or relevance of any financial data or assumptions. Commercial NNN Lease does not serve as a financial advisor to any party regarding any proposed transaction.

All data and assumptions regarding financial performance, including that used for financial modeling purposes, may differ from actual data or performance. Any estimates of market rents and/or projected rents that may be provided to a party do not necessarily mean that rents can be established at or increased to that level. Parties must evaluate any applicable contractual and governmental limitations as well as market conditions, vacancy factors and other issues in order to determine rents from or for the property. Legal questions should be discussed by the party with an attorney. Tax questions should be discussed by the party with a certified public accountant or tax attorney. Title questions should be discussed by the party with a title officer or attorney. Questions regarding the condition of the property and whether the property complies with applicable governmental requirements should be discussed by the party with appropriate engineers, architects, contractors, other consultants, and governmental agencies. All properties and services are marketed by Commercial NNN Lease in compliance with all applicable fair housing and equal opportunity laws.