

For Sale

1406 N Galleria Drive,
Nampa, ID 83687

Colliers



Jake Tucker

+1 208 472 2846

jake.tucker@colliers.com

Mike Christensen

+1 208 472 2866

mike.christensen@colliers.com

Logan Wheeler

+1 208 472 2868

logan.wheeler@colliers.com

Bryan Vaughn

+1 208 850 2191

bryan.vaughn@colliers.com

Scott Feighner

+1 208 861 4812

scott.feighner@colliers.com

Property Overview

Property Type	Industrial/Retail
Price	\$17,000,000
Space Available	± 104,000 SF
Land Size	± 5.9 Acres
Parking	Ample
Access	Contact Agent

Key Highlights

- 104,000 SF former Macy's building
- Central Valley Express Way a quarter mile to the east
- Minutes from the Ford Idaho Center, CWI, Amazon & St. Alphonsus
- 15 minute drive times to West Boise, Meridian, Eagle, Middleton & Caldwell

Demos

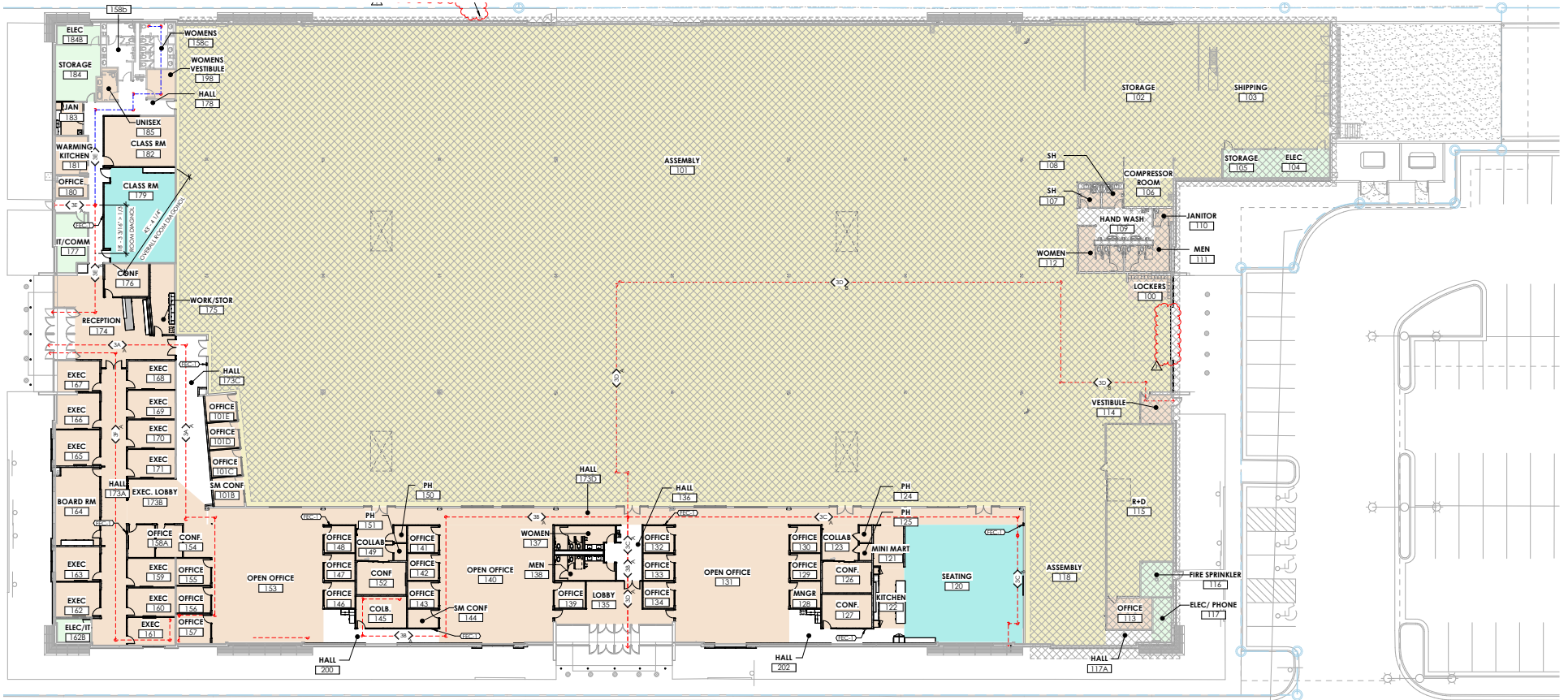
	1 Miles	3 Miles	5 Miles
Population	4,937	47,922	73,537
Households	1,805	18,926	28,317
Avg. Income	\$81,040	\$65,263	\$69,196

Conceptual Site Plan



Floor Plan

104,000 SF Available

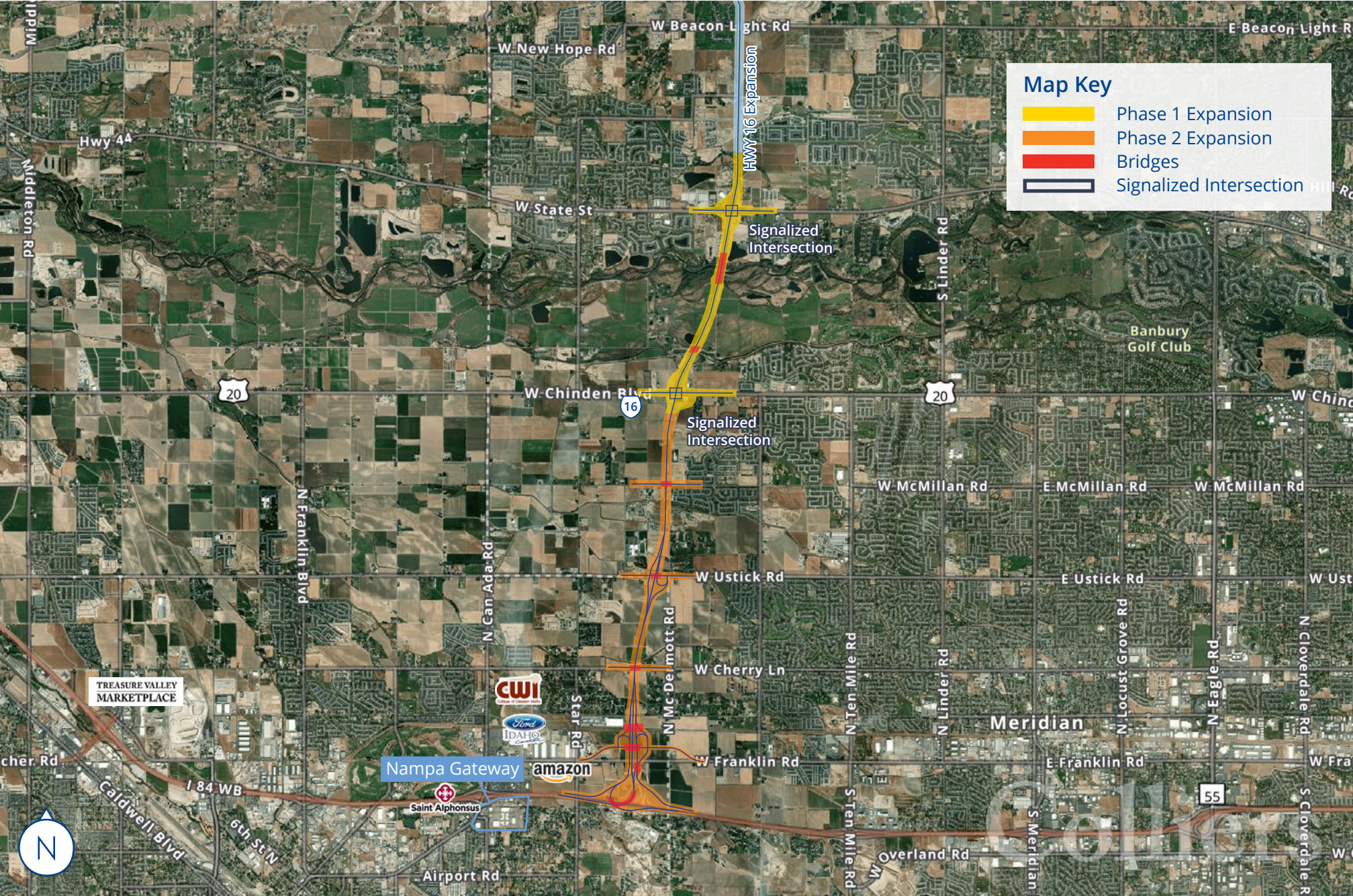


1406 N Galleria Dr. | For Sale

Property Photos



Central Valley Expressway Improvement Plan



Location



Location



Google Map



Street View



755 West Front Street, Suite 300
Boise, Idaho 83702
+1 208 345 9000
colliers.com/idaho

This document has been prepared by Colliers for advertising and general information only. Colliers makes no guarantees, representations or warranties of any kind, expressed or implied, regarding the information including, but not limited to, warranties of content, accuracy and reliability. Any interested party should undertake their own inquiries as to the accuracy of the information. Colliers excludes unequivocally all inferred or implied terms, conditions and warranties arising out of this document and excludes all liability for loss and damages arising there from. This publication is the copyrighted property of Colliers and/or its licensor(s). © 2025. All rights reserved. This communication is not intended to cause or induce breach of an existing listing agreement. Colliers Paragon, LLC.