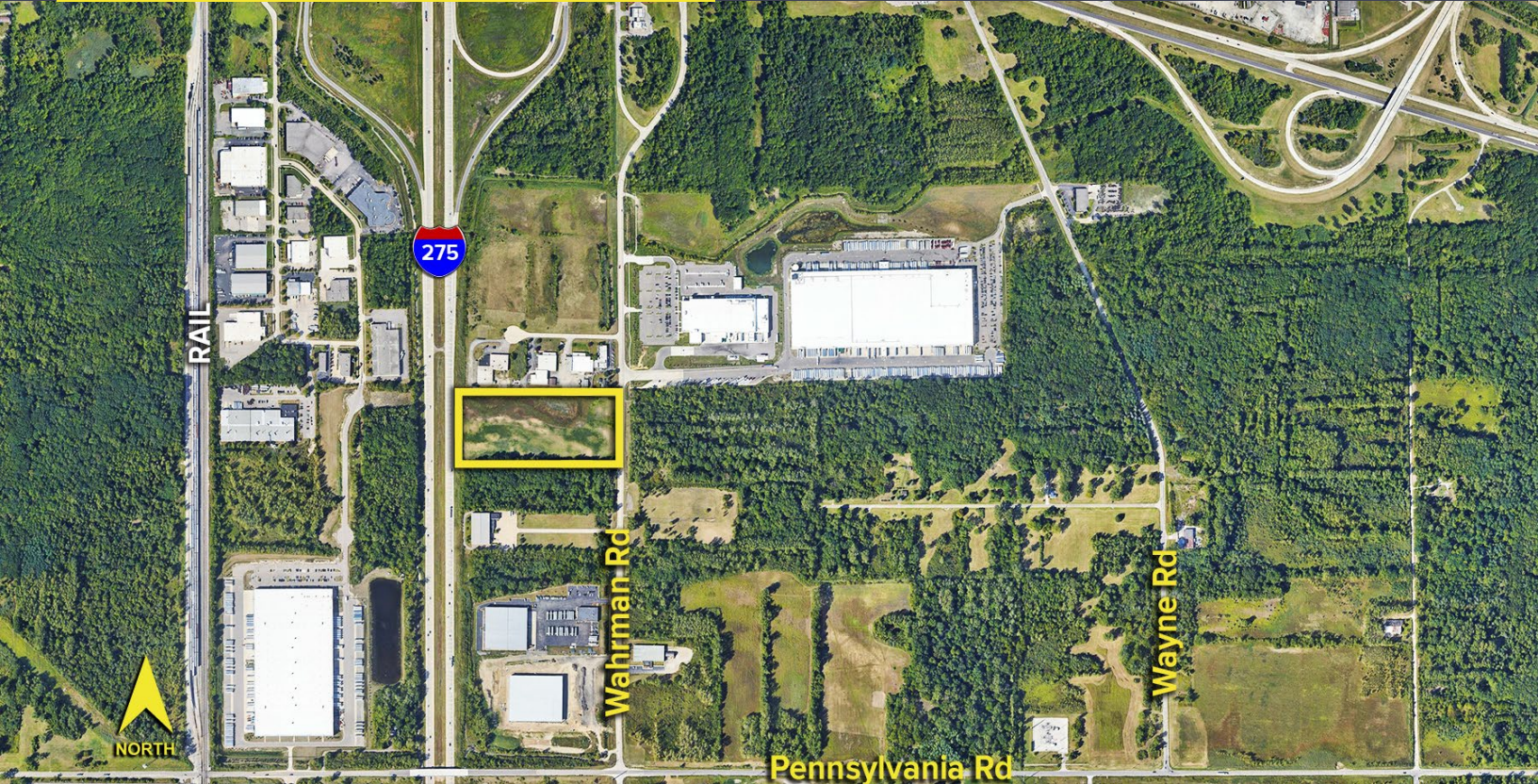


WAHRMAN ROAD ROMULUS, MICHIGAN

LAND FOR SALE
10.72 Acres Available

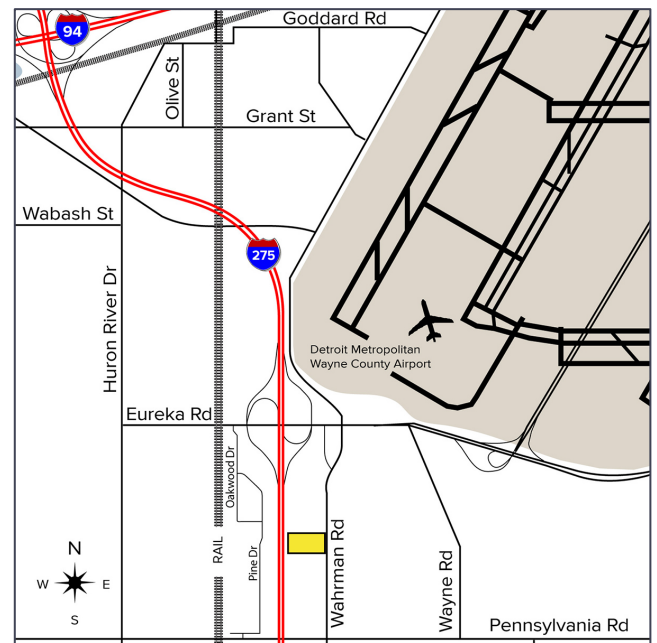


**SIGNATURE
ASSOCIATES**
KNOW SIGNATURE | KNOW RESULTS



PROPERTY FEATURES

- 10.72 acres
- Zoned M-2, Heavy Industrial
- Sewer, water and utilities on site
- Site is cleaned and ready for development
- Close to I-275 & DTW Airport
- Sale Price: \$1,800,000 (\$167,910.45/acre)



For more information, please contact:

BRAD VIERGEVER
(248) 799 3146
bviergever@signatureassociates.com

SIGNATURE ASSOCIATES
One Towne Square, Suite 1200
Southfield, MI 48076
www.signatureassociates.com

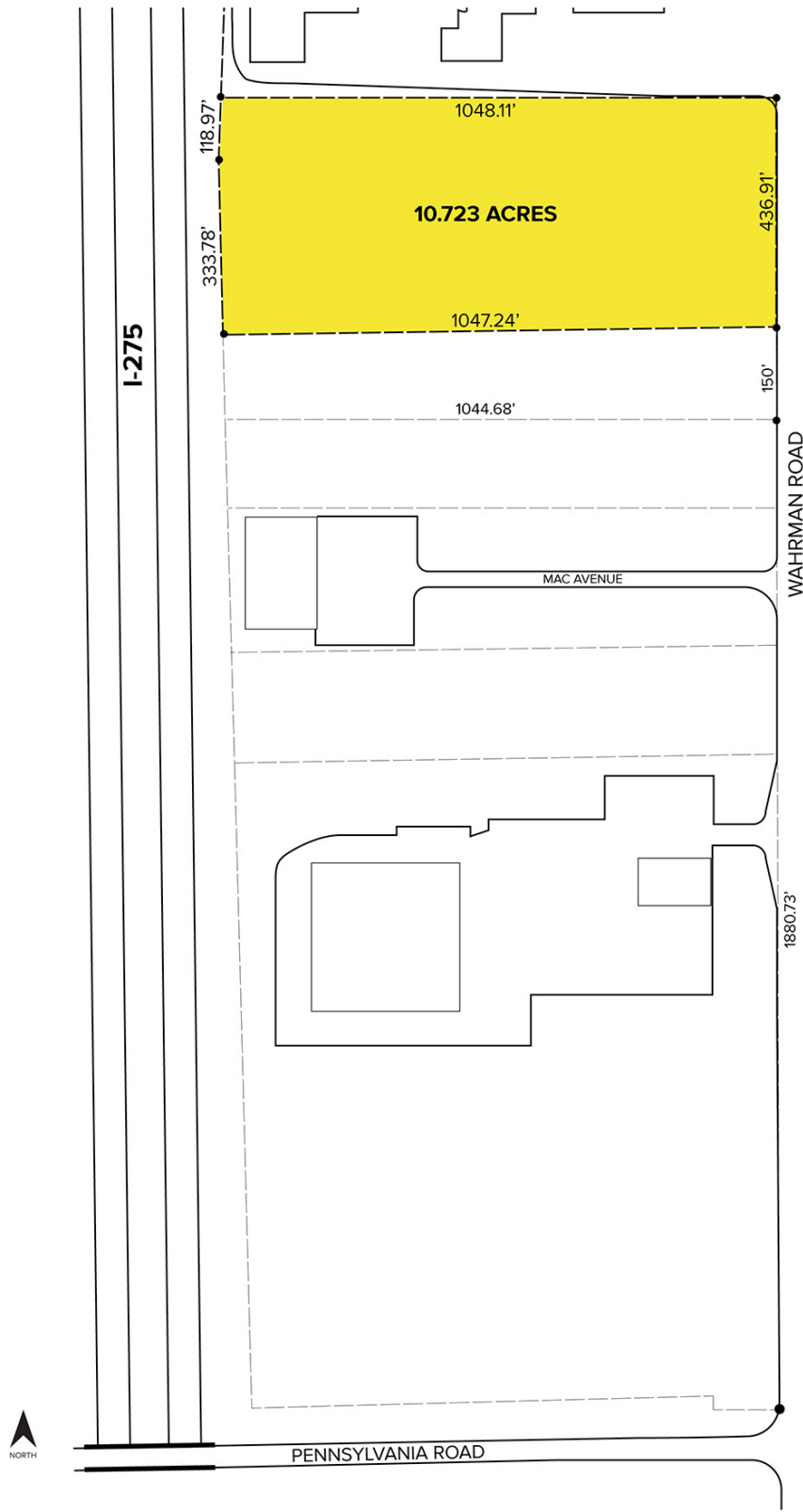
Information is subject to verification and no liability for errors or omissions is assumed. Price is subject to change and listing withdrawal.

Wahrman Road – Romulus, Michigan

Land For Sale

10.72
Acres
AVAILABLE

Site Plan



For more information, please contact:

BRAD VIERGEVER
(248) 799 3146
bviergever@signatureassociates.com

SIGNATURE ASSOCIATES
One Towne Square, Suite 1200
Southfield, MI 48076
www.signatureassociates.com

Information is subject to verification and no liability for errors or omissions is assumed. Price is subject to change and listing withdrawal.