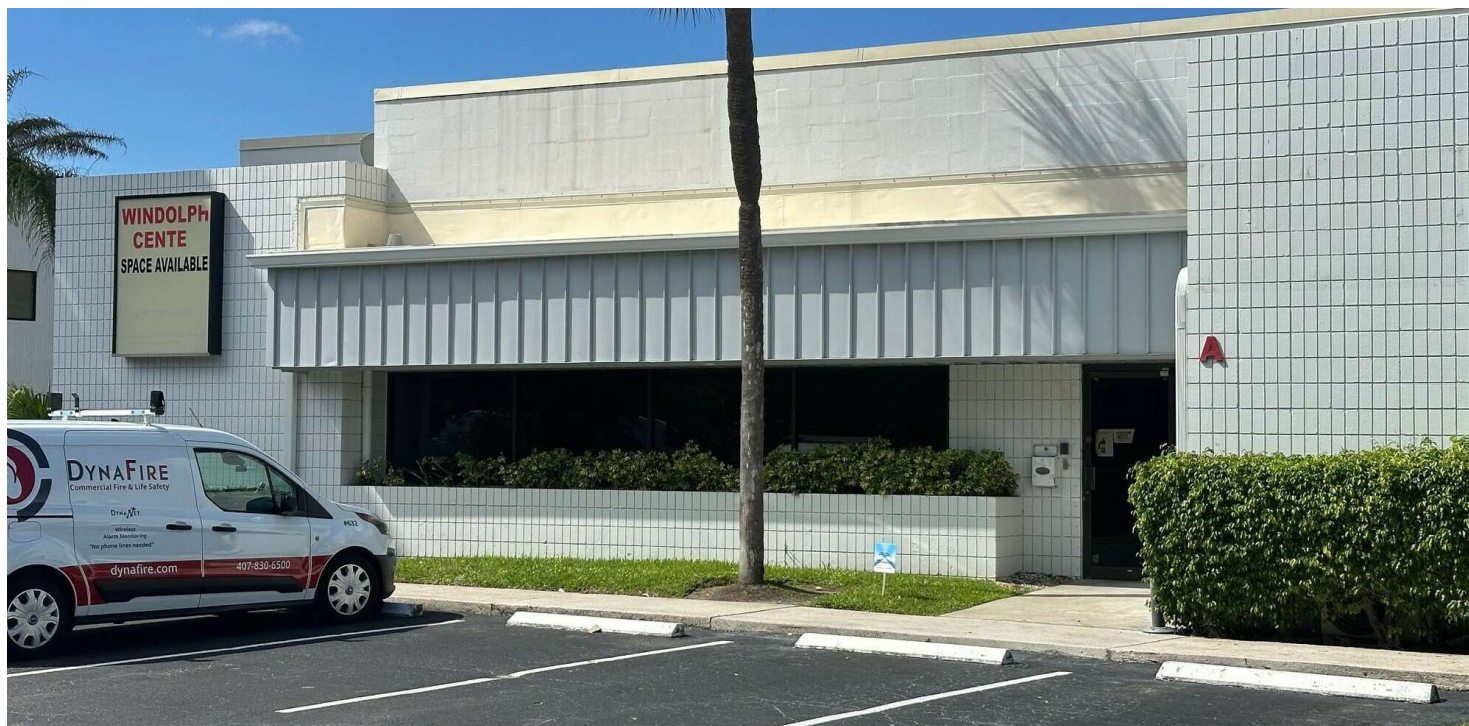


WINDOLPH PLAZA

1020 NW 6th St, Deerfield Beach, FL 33442

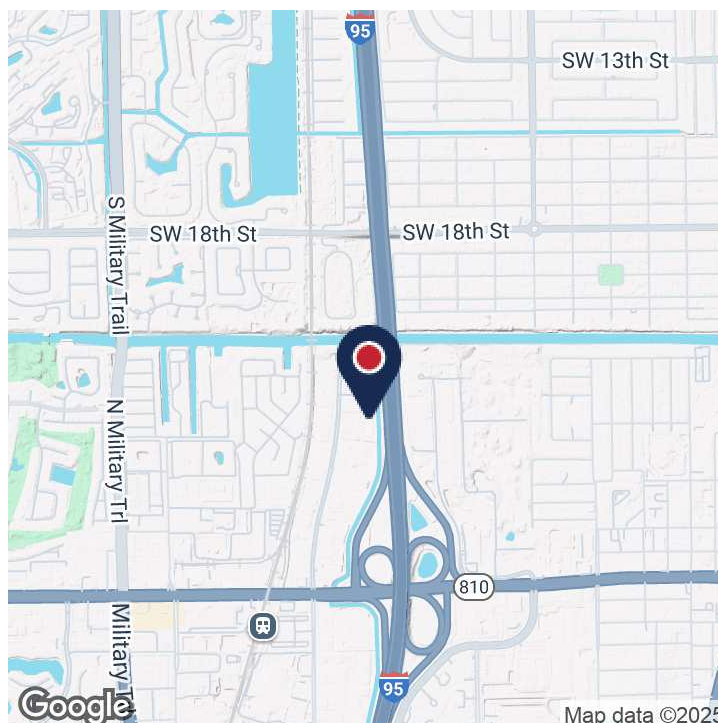


For Lease



BULLETS HEADLINE

- 7,415 +/- SF of Flex/Industrial Space available for lease
- Approx. 30% Office / 70% Lab/Warehouse
- Base Rent at \$16.00 NNN
- 1 dock high door
- 1 grade level door
- 100% HVAC
- PID (Planned Industrial District) Ideal for light manufacturing or lab use.
- Strategically located on the west side of I-95 and 0.5 miles north of W Hillsboro Blvd.
- Frontage on I-95
- Available June 1, 2025
- 3Ph power
- 20' clear height
- End Cap



Keith R. Graves, CCIM, SIOR
Senior Vice President
954.652.2031
kgraves@bergercommercial.com

Daniel Forman
Sales Associate
954.652.2004
dforman@bergercommercial.com

Jonathan Thiel
Senior Vice President
954.652.2020
jthiel@bergercommercial.com

WINDOLPH PLAZA

1020 NW 6th St, Deerfield Beach, FL 33442



For Lease



Keith R. Graves, CCIM, SIOR
Senior Vice President
954.652.2031
kgroves@bergercommercial.com

Daniel Forman
Sales Associate
954.652.2004
dforman@bergercommercial.com

Jonathan Thiel
Senior Vice President
954.652.2020
jthiel@bergercommercial.com

Berger Commercial Realty Corp. | bergercommercial.com

550 S. Andrews Avenue Suite 400, Ft. Lauderdale, FL 33301 | P: 954.358.0900 • F: 954.358.0901 | 2240 Woolbright Road, Suite 300, Boynton Beach, FL, 33426 | P: 561.613.0900 F: 561.877.8363

Information furnished regarding this property is from sources deemed reliable, but no warranty or representation as to the accuracy thereof and it is submitted subject to errors, omissions, prior sale, lease or withdrawal without prior notice.

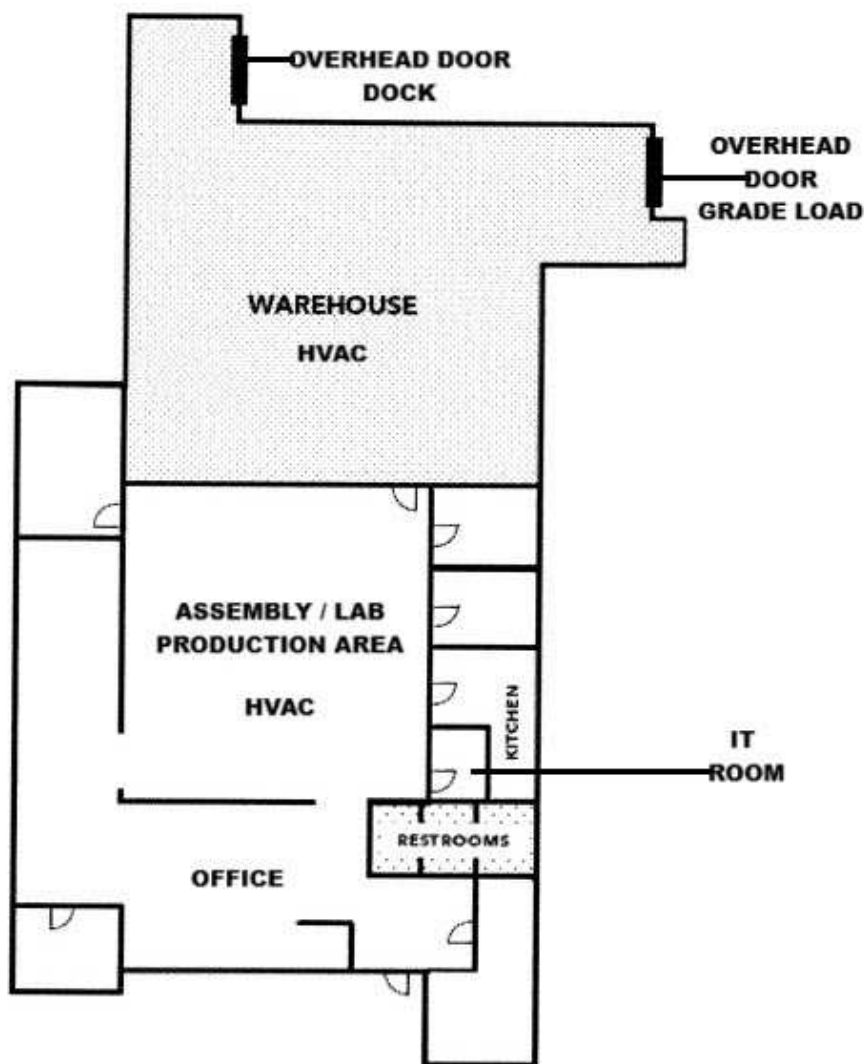
WINDOLPH PLAZA

1020 NW 6th St, Deerfield Beach, FL 33442



Floor Plans

Windolph Plaza Bay A



Keith R. Graves, CCIM, SIOR
Senior Vice President
954.652.2031
kgraves@bergercommercial.com

Daniel Forman
Sales Associate
954.652.2004
dforman@bergercommercial.com

Jonathan Thiel
Senior Vice President
954.652.2020
jthiel@bergercommercial.com