

39205 COUNTRY CLUB DR.
FARMINGTON HILLS, MICHIGAN

HI-TECH FOR SUBLEASE
12,609 Square Feet Available



**SIGNATURE
ASSOCIATES**
KNOW SIGNATURE | KNOW RESULTS

DISCOVERY CENTRE BUILDING



PROPERTY FEATURES

- 12,609 square feet available
 - 9,884 square feet of office
 - 2,725 square feet of warehouse/lab
- 16' clear height in warehouse
- (4) grade level doors
- Must see hi-tech sublease opportunity
- Impeccable space with high-end finishes throughout
- Sublease expiring 1/31/2027
- Lease Rate: Contact Broker



For more information, please contact:

JASON STOUGH
(248) 948 4180
jstough@signatureassociates.com

GRANT BRUCE
(248) 948 4188
gbruce@signatureassociates.com

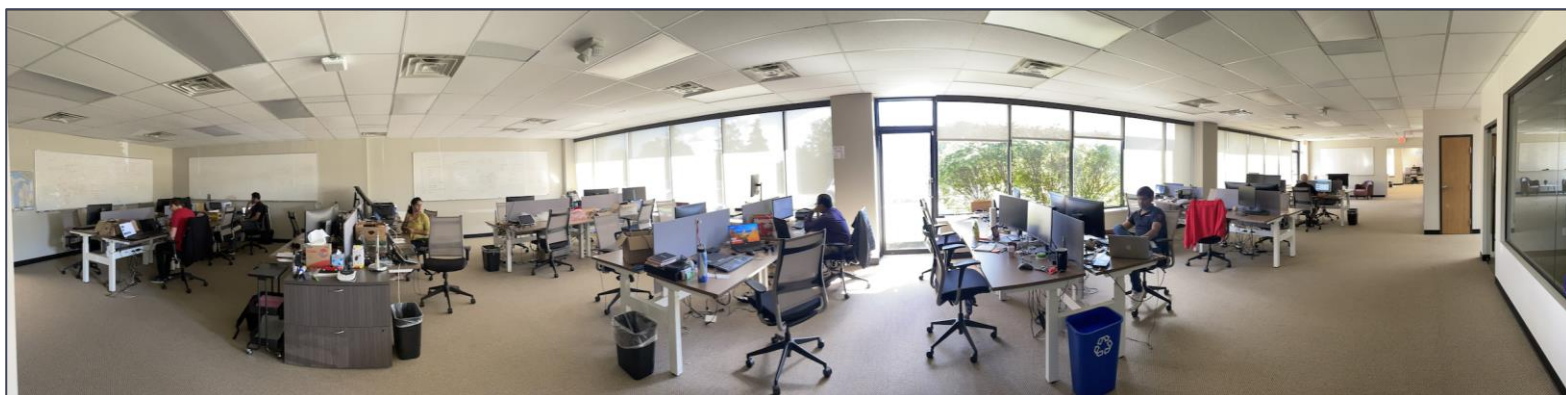
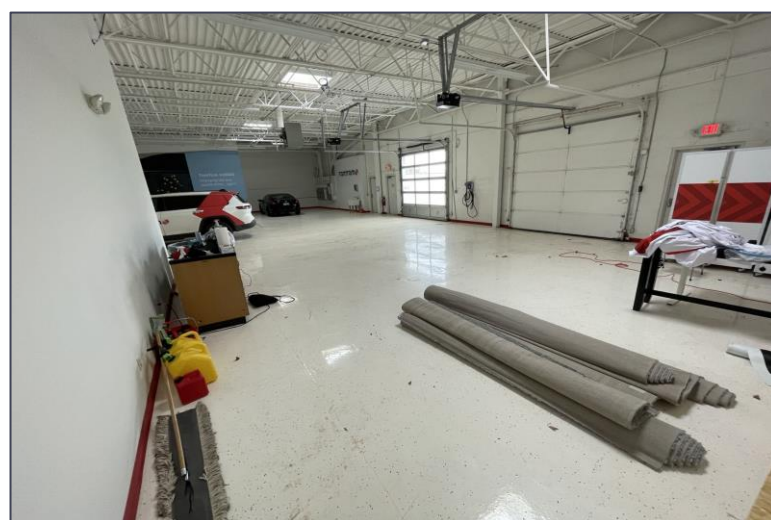
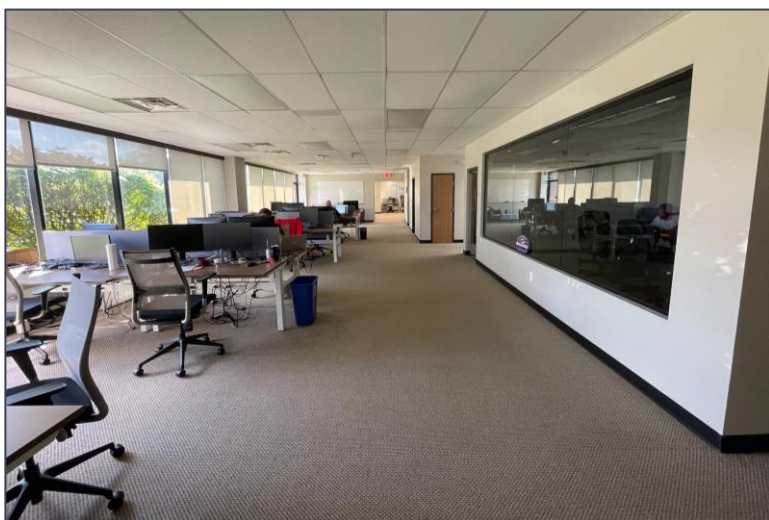
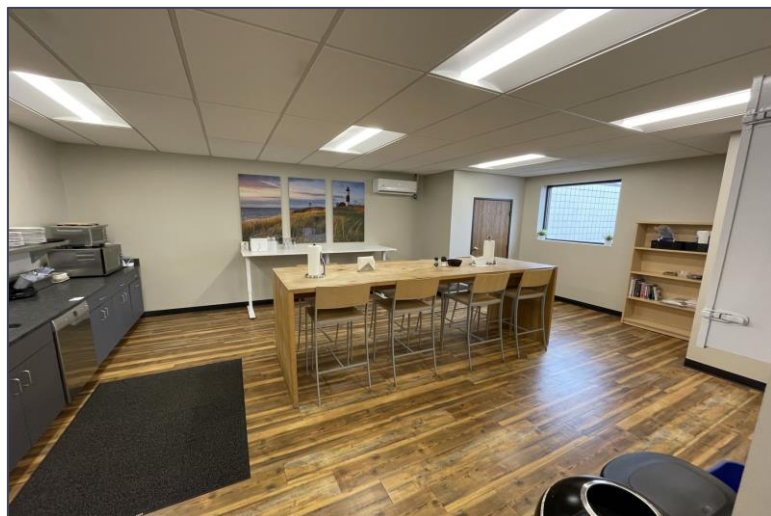
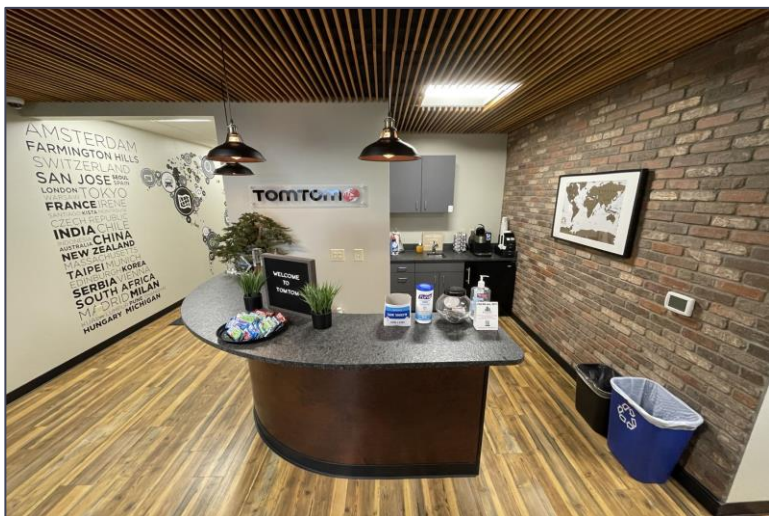
SIGNATURE ASSOCIATES
One Towne Square, Suite 1200
Southfield, MI 48076
www.signatureassociates.com

39205 Country Club Dr. – Farmington Hills, Michigan

Hi-Tech For Sublease

12,609
Square Feet
AVAILABLE

Interior Photos



For more information, please contact:

JASON STOUGH

(248) 948 4180

jstough@signatureassociates.com

GRANT BRUCE

(248) 948 4188

gbruce@signatureassociates.com

SIGNATURE ASSOCIATES

One Towne Square, Suite 1200

Southfield, MI 48076

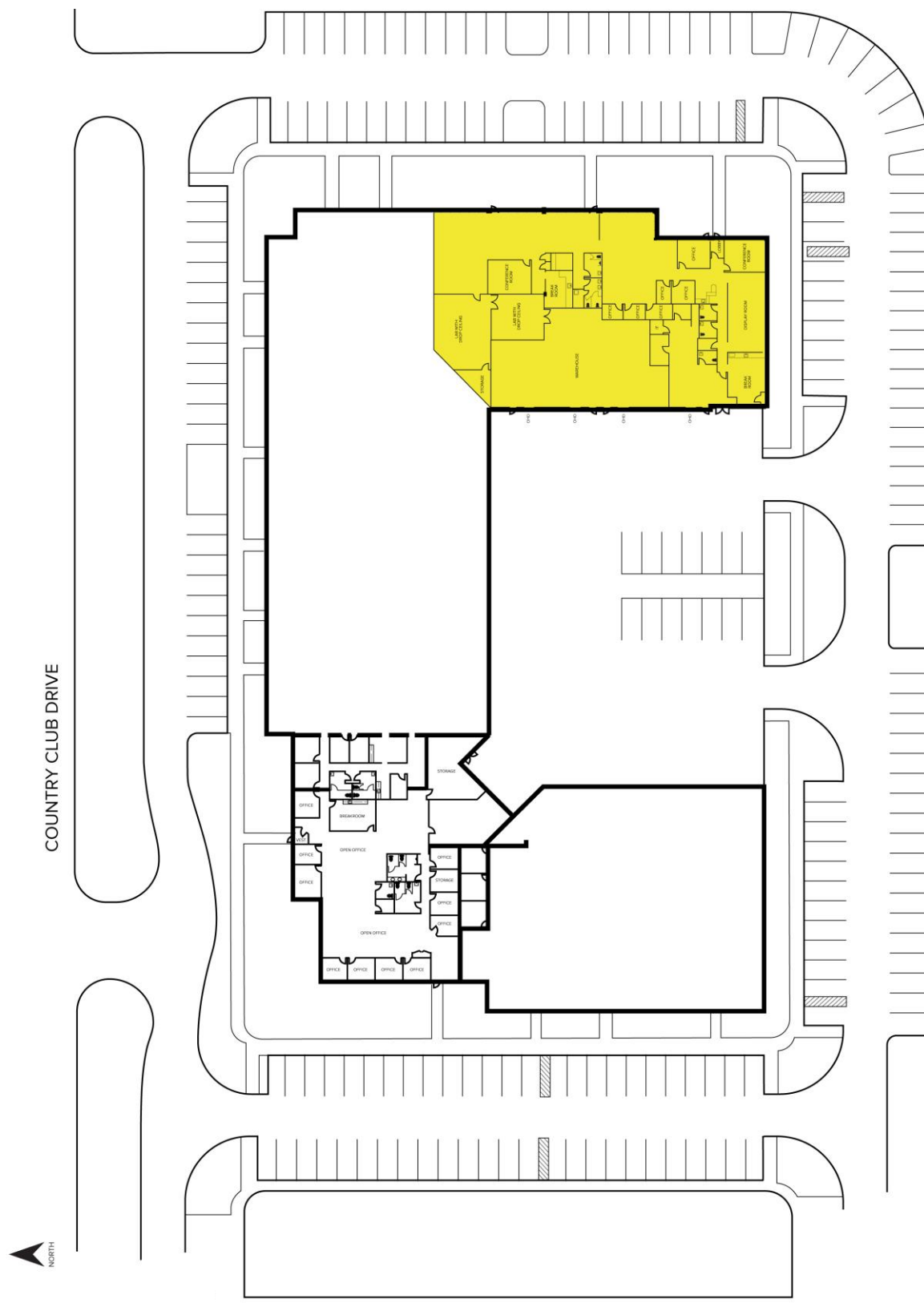
www.signatureassociates.com

39205 Country Club Dr. – Farmington Hills, Michigan

Hi-Tech For Sublease

12,609
Square Feet
AVAILABLE

Site Plan



For more information, please contact:

JASON STOUGH

(248) 948 4180

jstough@signatureassociates.com

GRANT BRUCE

(248) 948 4188

gbruce@signatureassociates.com

SIGNATURE ASSOCIATES

One Towne Square, Suite 1200

Southfield, MI 48076

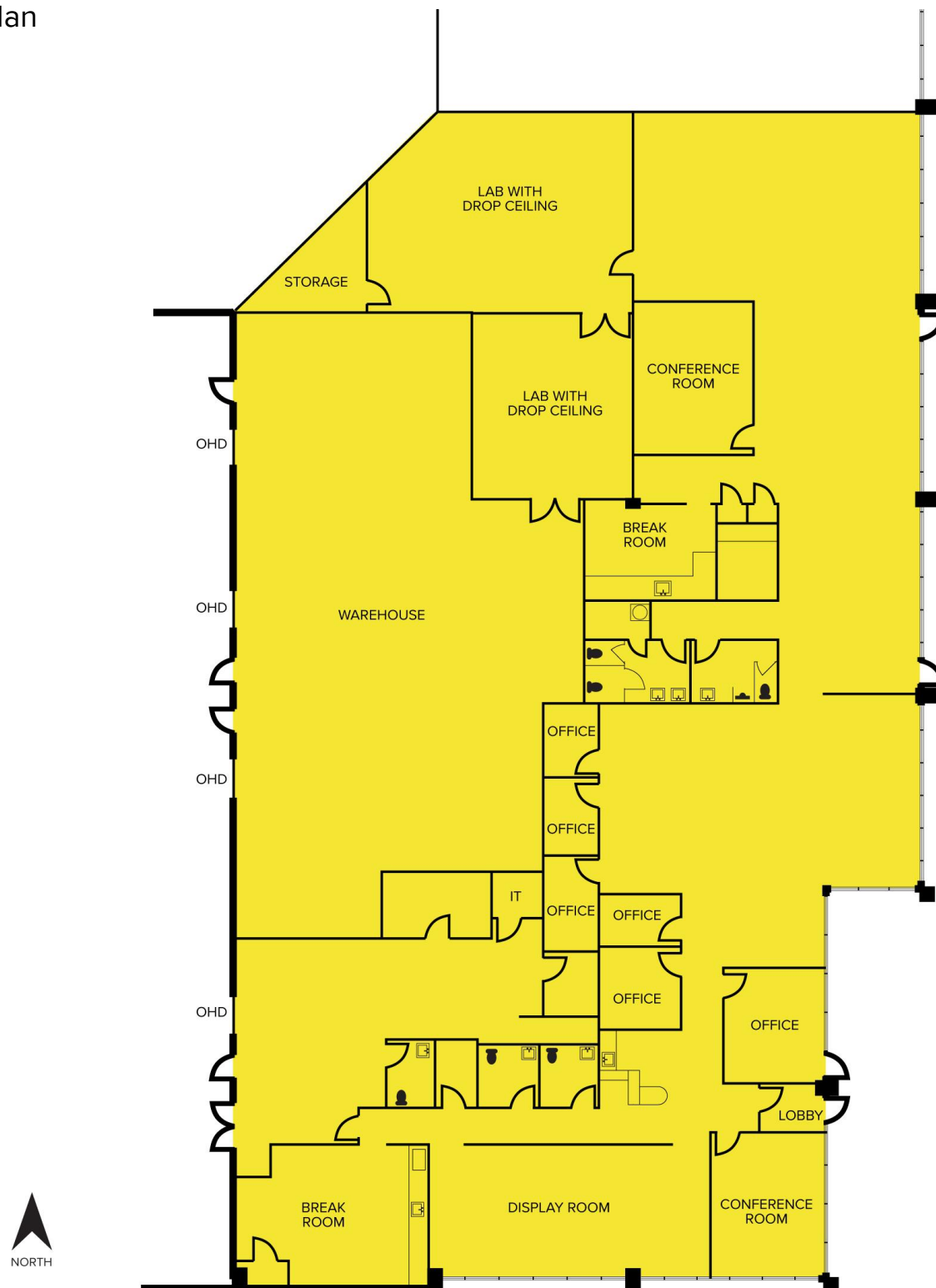
www.signatureassociates.com

39205 Country Club Dr. – Farmington Hills, Michigan

Hi-Tech For Sublease

12,609
Square Feet
AVAILABLE

Floor Plan



For more information, please contact:

JASON STOUGH

(248) 948 4180

jstough@signatureassociates.com

GRANT BRUCE

(248) 948 4188

gbruce@signatureassociates.com

SIGNATURE ASSOCIATES

One Towne Square, Suite 1200

Southfield, MI 48076

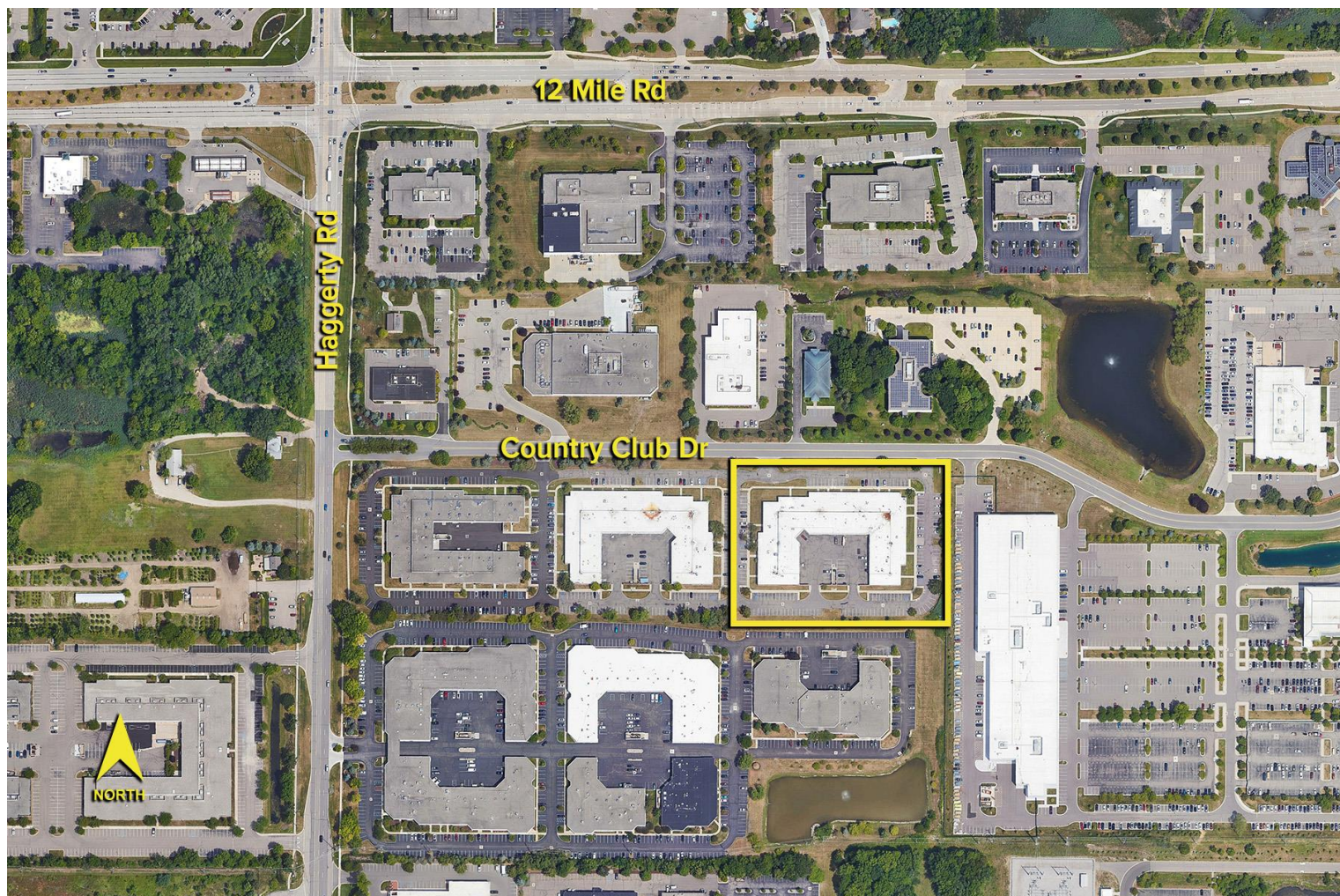
www.signatureassociates.com

39205 Country Club Dr. – Farmington Hills, Michigan

Hi-Tech For Sublease

12,609
Square Feet
AVAILABLE

Aerial



For more information, please contact:

JASON STOUGH

(248) 948 4180

jstough@signatureassociates.com

GRANT BRUCE

(248) 948 4188

gbruce@signatureassociates.com

SIGNATURE ASSOCIATES

One Towne Square, Suite 1200

Southfield, MI 48076

www.signatureassociates.com

Information is subject to verification and no liability for errors or omissions is assumed. Price is subject to change and listing withdrawal.