



Medical/Dental Office Space Available For Lease

**466 E CALAVERAS BLVD,
MILPITAS, CA**

Project Highlights

- Space Available for dental, medical, or general office uses
- Located in the prestigious Calaveras Professional Center
- Lush landscaped and manicured grounds with beautiful water features and fountains at the center of the project
- Easy on-site parking with a parking ratio of over 7/1000 SF
- Space was formerly used as a dental office and some basic dental infrastructure is still in place
- Calaveras Professional Center is located on Calaveras Blvd, a well-traveled and easy accessible street running east west and linking Milpitas easily to the Peninsula and Hwys 680, 880, and 237
- Across the street from Safeway, Staples, 24-hour Fitness, Wells Fargo and many nearby amenities

Available Spaces

Suite 466 A- ±1,390 SF

New market ready unit with new paint, new lights, new ceiling grid, large bay windows overlooking water feature

Suite 466 C- ±1,336SF

Former medical pediatric office, 4 exam rooms, lab, restroom, doctor office, reception and waiting area

For information, please contact:

Geri Wong

Senior Managing Director

t 408-987-4134

geri.wong@nmrk.com

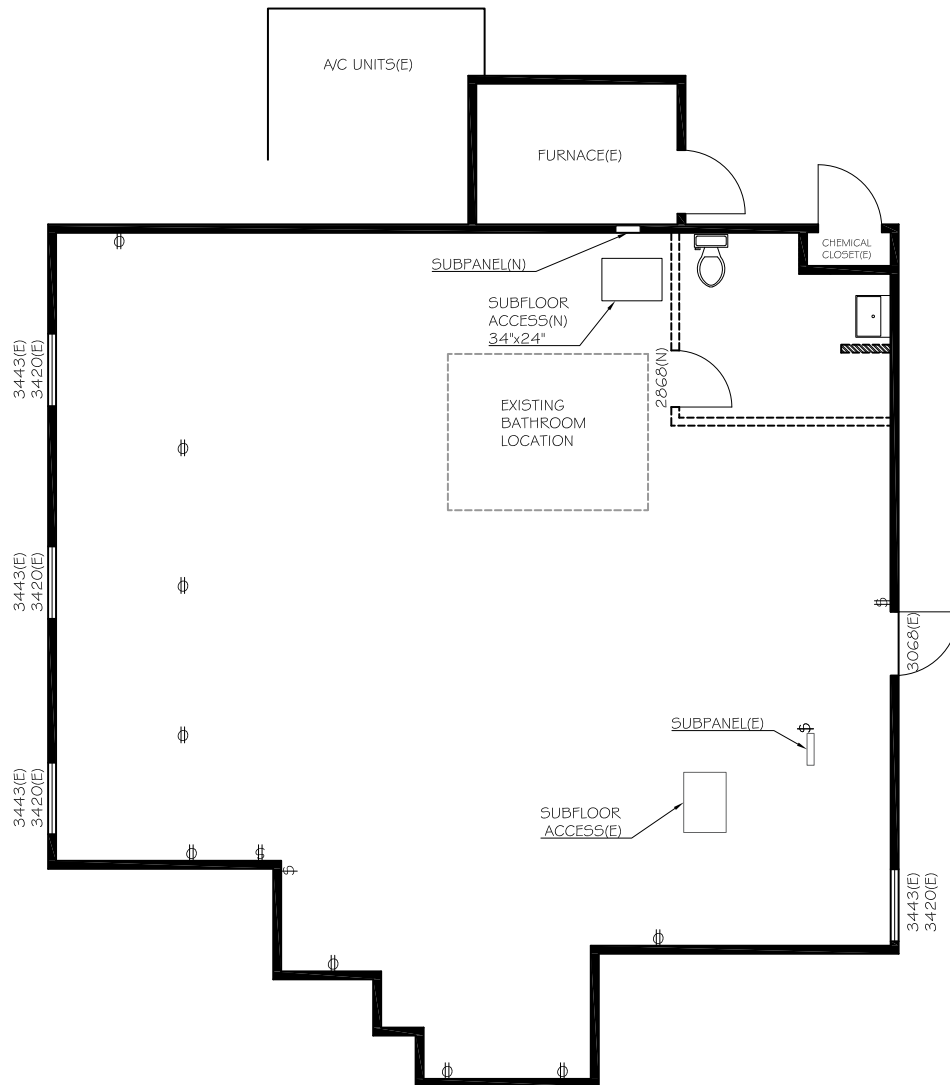
CA RE License #01142432

nmrk.com

NEWMARK

The distributor of this communication is performing acts for which a real estate license is required. The information contained herein has been obtained from sources deemed reliable but has not been verified and no guarantee, warranty or representation, either express or implied, is made with respect to such information. Terms of sale or lease and availability are subject to change or withdrawal without notice. 9260037024 • 05/25

Floor Plan - 466 A



*This floor plan is not drawn to scale.

For information, please contact:

Geri Wong

Senior Managing Director

t 408-987-4134

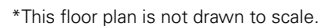
geri.wong@nmrk.com

CA RE License #01142432

nmrk.com

NEWMARK

The distributor of this communication is performing acts for which a real estate license is required. The information contained herein has been obtained from sources deemed reliable but has not been verified and no guarantee, warranty or representation, either express or implied, is made with respect to such information. Terms of sale or lease and availability are subject to change or withdrawal without notice. 9260037024 • 05/25



Geri Wong
Senior Managing Director

t 408-987-4134

geri.wong@nmrk.com

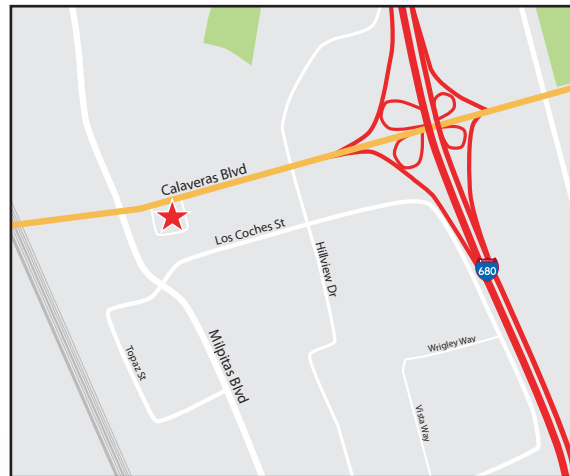
CA RE License #01142432

nmrk.com

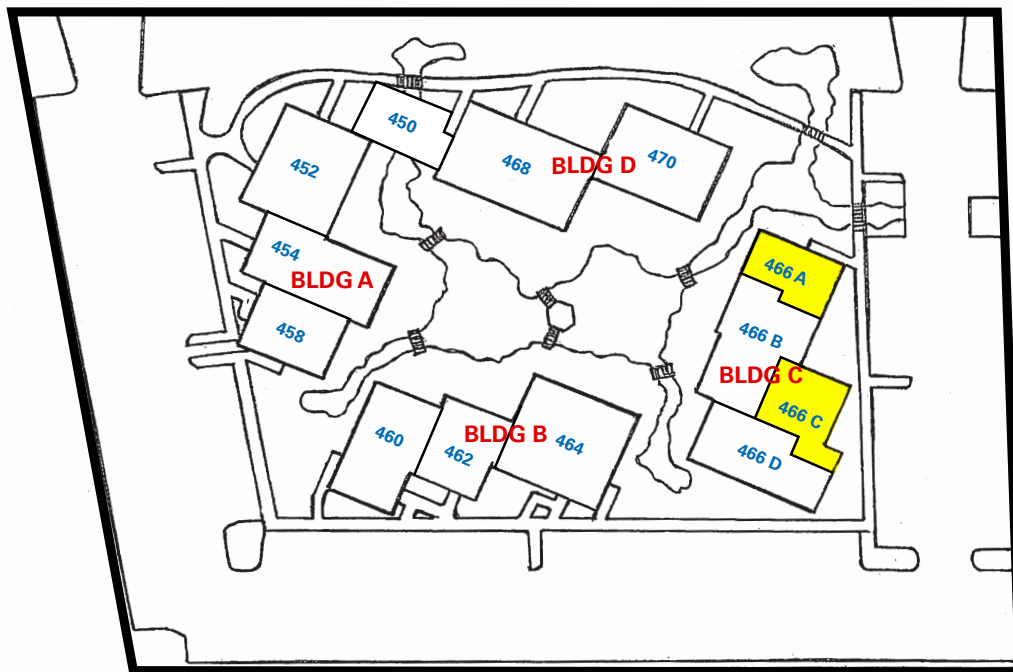
NEWMARK

The distributor of this communication is performing acts for which a real estate license is required. The information contained herein has been obtained from sources deemed reliable but has not been verified and no guarantee, warranty or representation, either express or implied, is made with respect to such information. Terms of sale or lease and availability are subject to change or withdrawal without notice. 9260037024 • 05/25

Location Map & Site Plan



E Calaveras Blvd



*This site plan is not drawn to scale.

For information, please contact:

Geri Wong

Senior Managing Director

t 408-987-4134

geri.wong@nmrk.com

CA RE License #01142432

nmrk.com

NEWMARK

The distributor of this communication is performing acts for which a real estate license is required. The information contained herein has been obtained from sources deemed reliable but has not been verified and no guarantee, warranty or representation, either express or implied, is made with respect to such information. Terms of sale or lease and availability are subject to change or withdrawal without notice. 9260037024 • 05/25

Gallery - Suite 466 C



For information, please contact:

Geri Wong

Senior Managing Director

t 408-987-4134

geri.wong@nmrk.com

CA RE License #01142432

nmrk.com

NEWMARK

The distributor of this communication is performing acts for which a real estate license is required. The information contained herein has been obtained from sources deemed reliable but has not been verified and no guarantee, warranty or representation, either express or implied, is made with respect to such information. Terms of sale or lease and availability are subject to change or withdrawal without notice. 9260037024 • 05/25

Gallery



For information, please contact:

Geri Wong

Senior Managing Director

t 408-987-4134

geri.wong@nmrk.com

CA RE License #01142432

nmrk.com

NEWMARK

The distributor of this communication is performing acts for which a real estate license is required. The information contained herein has been obtained from sources deemed reliable but has not been verified and no guarantee, warranty or representation, either express or implied, is made with respect to such information. Terms of sale or lease and availability are subject to change or withdrawal without notice. 9260037024 • 05/25