



FOR LEASE

OFFICE/RETAIL

1586 E. STRATFORD AVE
SALT LAKE CITY, UT 84106

PROPERTY SUMMARY

Suite 1, located on the ground floor, offers direct street-level access along Stratford Avenue, with excellent visibility and large storefront windows. Designed for retail or customer-facing uses, the space is ideal for boutique retail, salon, café, or professional services, and features modern finishes, ADA accessibility, and signage opportunities to maximize exposure.

PROPERTY ADDRESS	1586 E. Stratford Suite 1 SLC 84106
SQUARE FEET	1,011 SF
BUILDING CLASS	Class B Office/ Retail
YEAR BUILT	2021
LEASE STRUCTURE	Triple Net (NNN)
LEASE PRICE	\$27 PSF



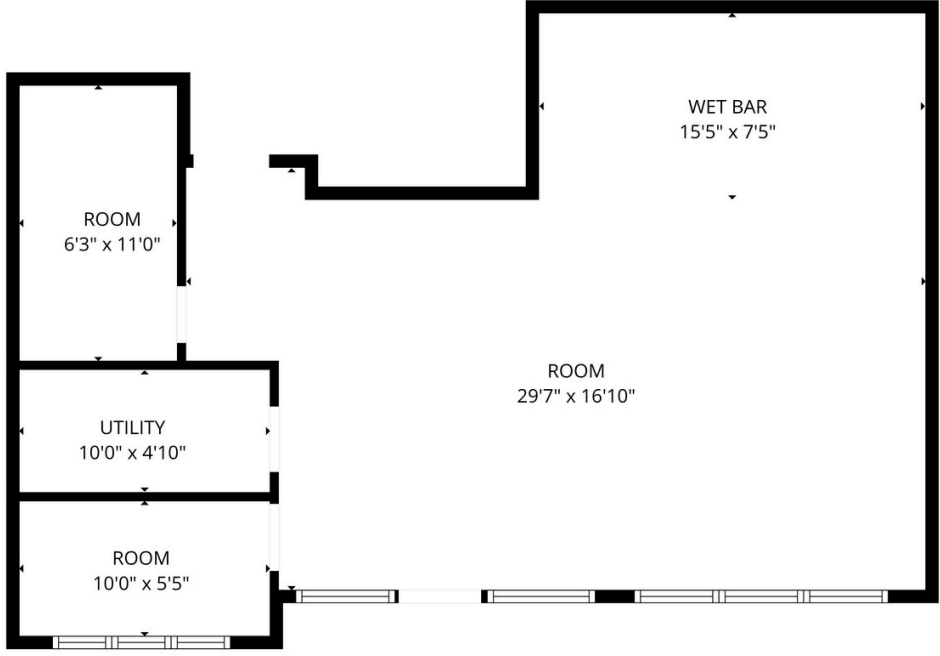
DAN RIP
Dan@acresutah.com
801.554.9664

RYAN EVANS
Ryan@acresutah.com
801.860.9090

ALIGN
COMPLETE REAL ESTATE SERVICES



FLOOR PLAN



PROPERTY PHOTOS



DAN RIP
 Dan@acresutah.com
 801.554.9664

ALIGN
 COMPLETE REAL ESTATE SERVICES