

# JUST LISTED!

## THE ELMS APARTMENTS

📍 137 Elm St, Lockhart, TX 78644

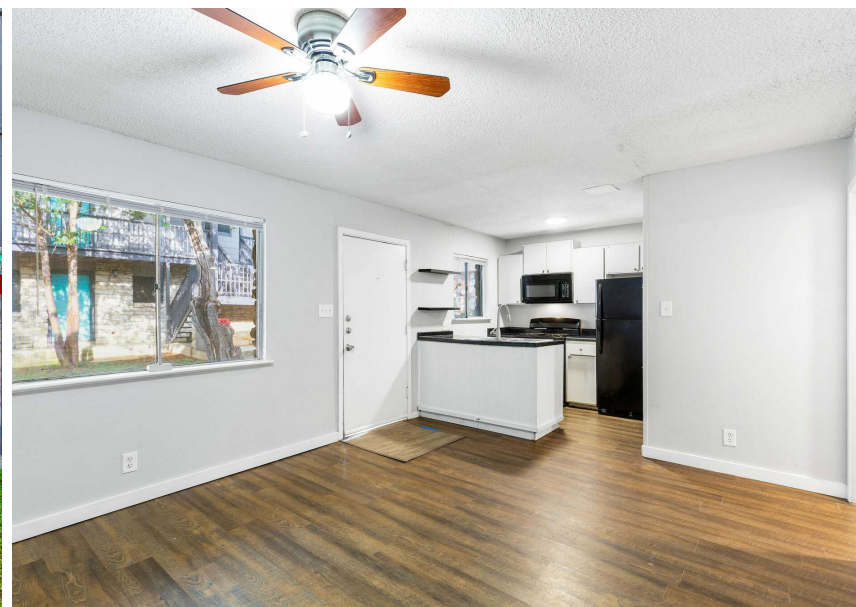
### INVESTMENT HIGHLIGHTS

- Well Maintained Asset with Minimal Capex Needs
- Proximity to I-35 and SH 130 Provides Interregional Access to Austin and San Antonio
- Strong Historical Performance and Proven Value-Add Strategy

### INVESTMENT DETAILS

Price	TBD
Number of Units	32
Building Size	21,475 SF
Year Built	1970
Lot Size	0.67 Acres
County	Caldwell





## THE ELMS APARTMENTS



**PATRICK STRAKE (LEAD)**

Senior Director  
512.906.8393  
patrick.strake@franklinst.com

**CLINT YODER**

Director  
737.285.0637  
clint.yoder@franklinst.com