

**LAND
FOR SALE**



SPENCER/HINES
P R O P E R T I E S

COMMERCIAL REAL ESTATE SALES, LEASING, & INVESTMENTS
500 E. North St. | Suite F | Greenville, SC 29601

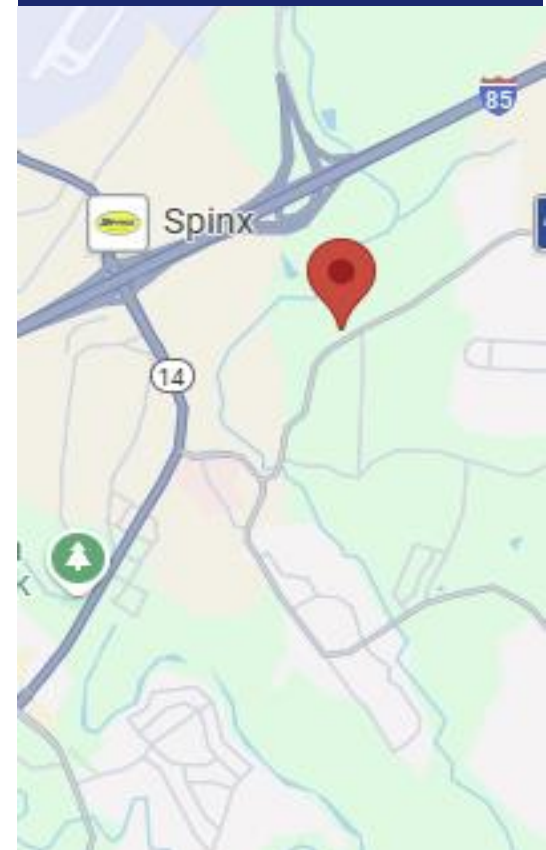
**697 ABNER CREEK RD
GREER, SC 29651**



**+/- 14.5 ACRES OF LAND
FOR SALE**

**SALE PRICE:
\$200,000/ACRE**

- +/- 14.5 acres of land for sale in Greer, SC
- Property is conveniently located 1.5 miles from I-85 at exit 56 at SC Highway 14
- Situated 0.8 miles from Pelham Medical Center
- Gentle sloping topography ideal for a new development
- Unzoned property in Spartanburg County
- Parts of the property are in Greer City
- Two houses currently sit on the property (2,570 SF & 1,475 SF)
- Located near sewer and water (see page 3 for map)
- Asking price: \$200,000/acre
- Property Address: 697 & 705 Abner Creek Road Greer, SC 29651



SITE PHOTOGRAPHY





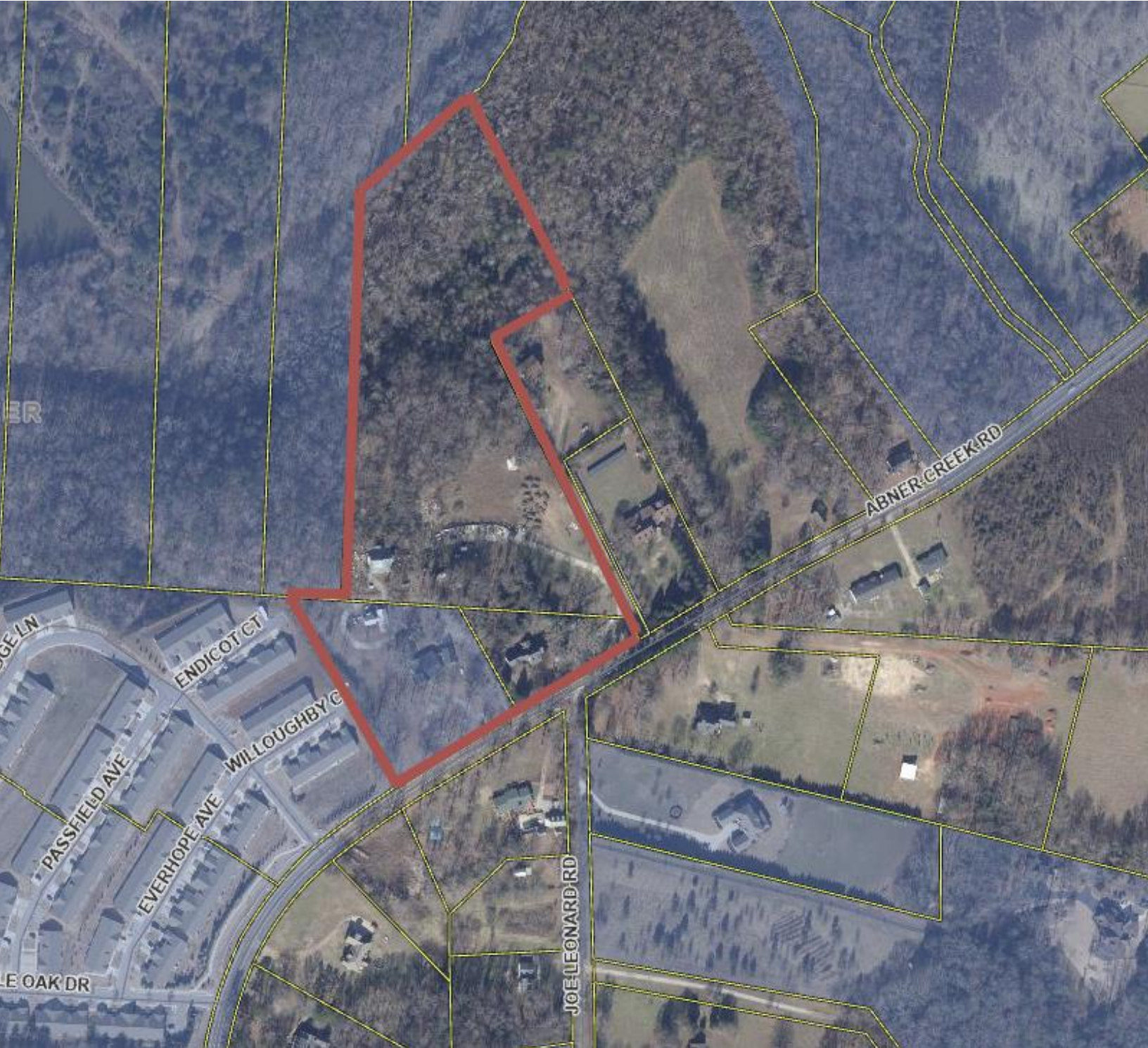
SPENCER/HINES P R O P E R T I E S

COMMERCIAL REAL ESTATE SALES, LEASING, & INVESTMENTS
500 E. North St. | Suite F | Greenville, SC 29601

LAND FOR SALE

697 ABNER CREEK RD GREER, SC 29651

PROPERTY LINES



BRIAN GRAYBILL | (864) 430-1260
BRIAN@SPENCERHINES.COM

No warranty or representation, expressed or implied, is made to the accuracy of the information contained herein, and the same is submitted subject to errors, omissions, change of price, rental or other conditions, imposed by the principles.



SEWER & WATER LINES

