



FOR SALE

FLEX/MANUFACTURING FACILITY WITH SHOWROOM

727 BOOTHBAY ROAD, EDGEComb, ME 04556

PROPERTY HIGHLIGHTS

- Available for the first time! Specialty manufacturing and retail complex on 19.70± acres.
- Property consists of a 2,500± SF retail showroom and 12,500± SF of manufacturing and warehousing space.
- Adaptable to and available for a variety of light industrial, retail, and storage uses.
- Located on Boothbay peninsula with access to affluent surrounding population.



SALE PRICE: \$1,250,000



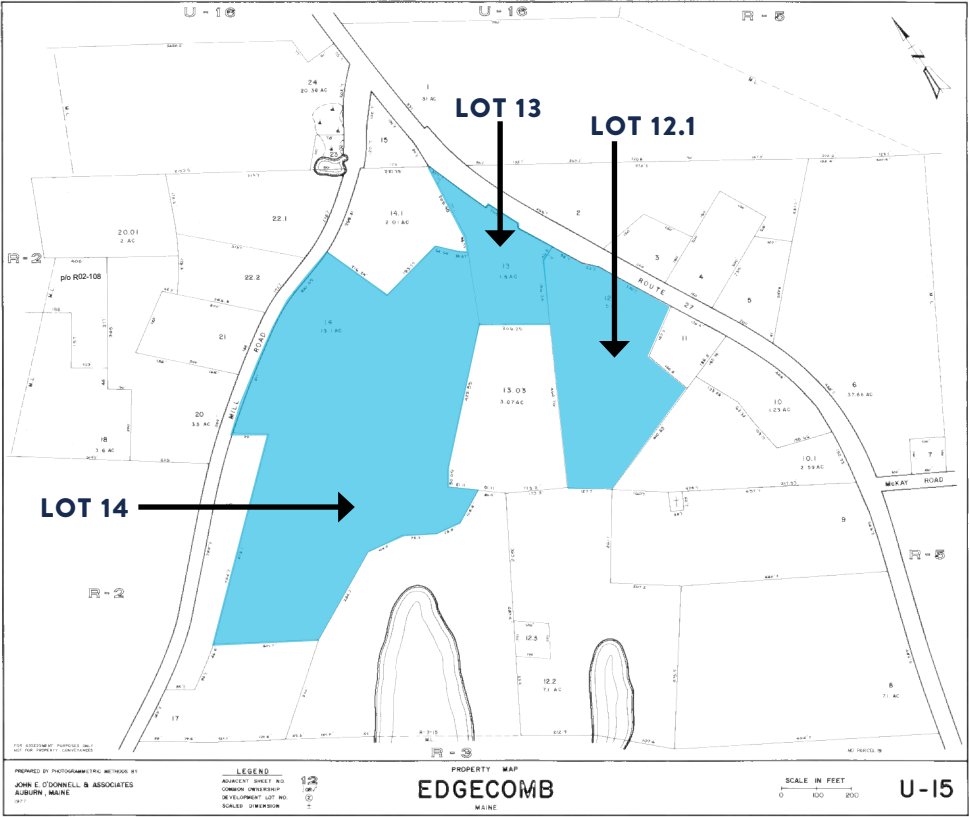
PROPERTY DETAILS

OWNER OF RECORD	Hilton Commercial Properties, LLC
DEED REFERENCE	4705/133 & 5881/19
ASSESSOR'S REFERENCE	Map 15, Lots 12-1, 13, 14
BUILDING SIZE	Showroom: 2,500± SF Manufacturing/Warehouse: 12,500± SF Total: 15,000± SF
LOT SIZE	Lot 12.1: 5.0± AC Lot 13: 1.6± AC Lot 14: 13.1± AC Total: 19.7± AC
LOT FRONTAGE	800'± along Route 27
ZONING	Route 27 Corridor, Area II
YEAR BUILT	1976
CONSTRUCTION	Wood frame with metal roof
# OF STORIES	One (1); Second floor in showroom.
LOADING DOCK(S)	One (1)
DRIVE-IN DOOR(S)	One (1) 10' door
UTILITIES	Private water & sewer
HVAC	Oil-fired forced hot air & ductless heat pump
POWER	Three-phase
PROPERTY TAXES	\$18,462/year (FY 2024)
SALE PRICE	\$1,250,000

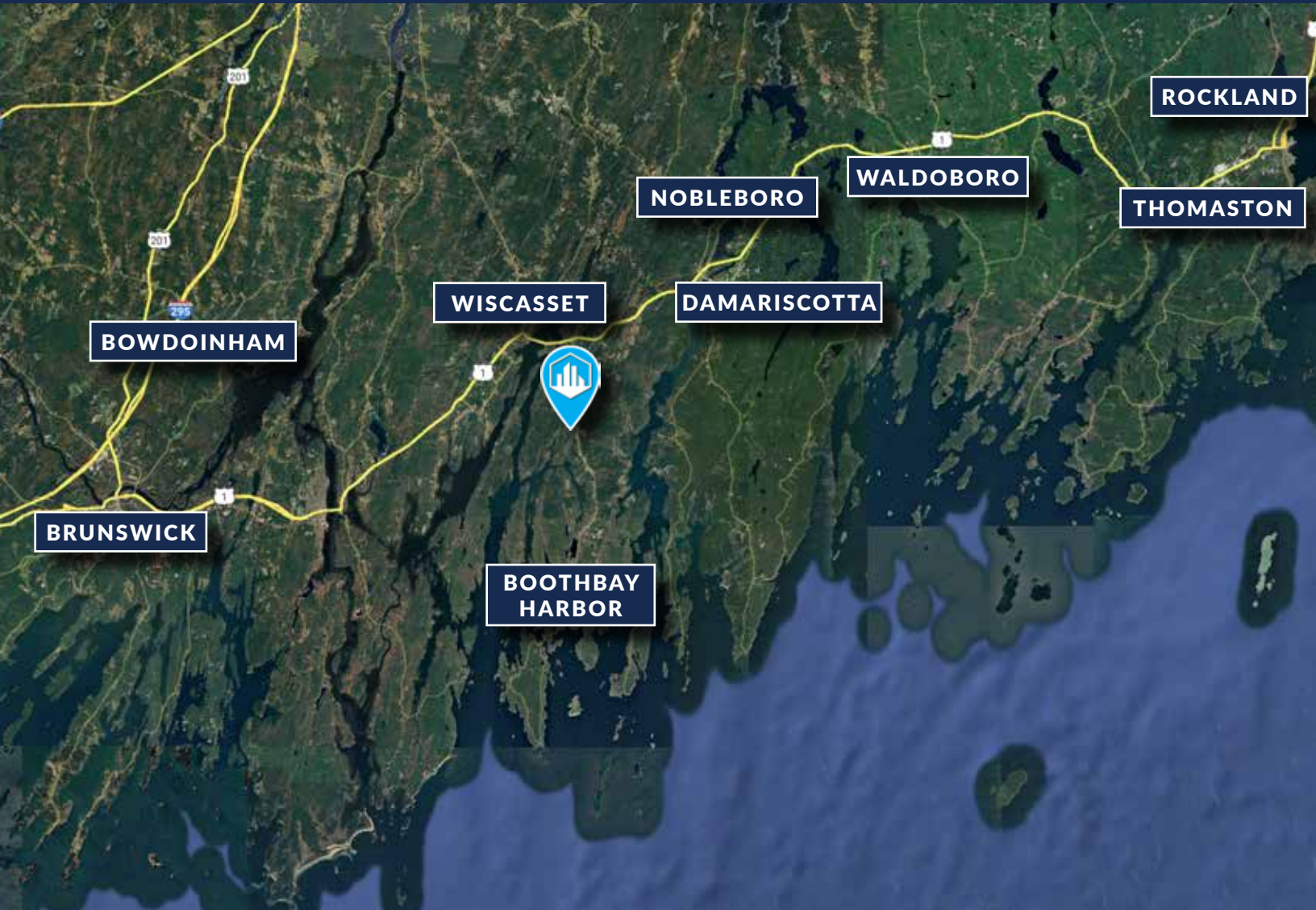
FOR SALE | FLEX/MANUFACTURING FACILITY WITH SHOWROOM
727 BOOTHBAY ROAD, EDGECOMB, ME 04556



TAX MAP



FOR SALE | FLEX/MANUFACTURING FACILITY WITH SHOWROOM
727 BOOTHBAY ROAD, EDGECOMB, ME 04556



CONTACT US



ROY DONNELLY
ASSOCIATE BROKER
207.553.1736 D
207.356.1327 C
RDONNELLY@BOULOS.COM



©2025 The Boulos Company, Inc. All rights reserved. This information has been obtained from sources believed reliable but has not been verified for accuracy or completeness. You should conduct a careful, independent investigation of the property and verify all information. Any reliance on this information is solely at your own risk. The Boulos Company and The Boulos Company logo are service marks of The Boulos Company, Inc. All other marks displayed on this document are the property of their respective owners. Photos herein are the property of their respective owners. Use of these images without the express written consent of the owner is prohibited.