



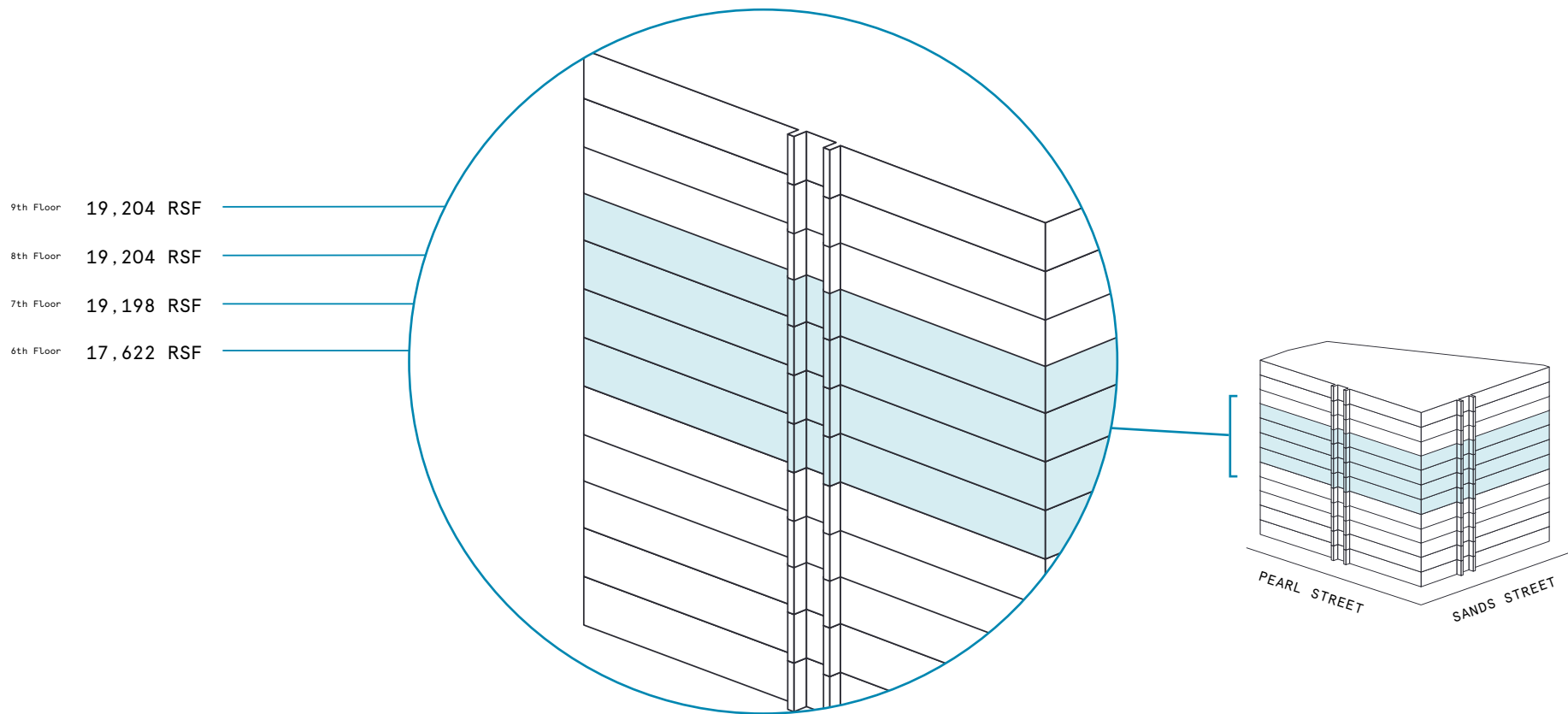
Dumbo Heights

77 Sands Street

Space
availability
summary

WeWork @ 77 Sands Street
Brooklyn, NY

wework



75,228 RSF

TOTAL WEWORK RSF

Dumbo Heights

At a glance

Workspaces designed for productivity and creativity with flexible size & term

Dedicated, private suites available from 85 to 5,536 RSF

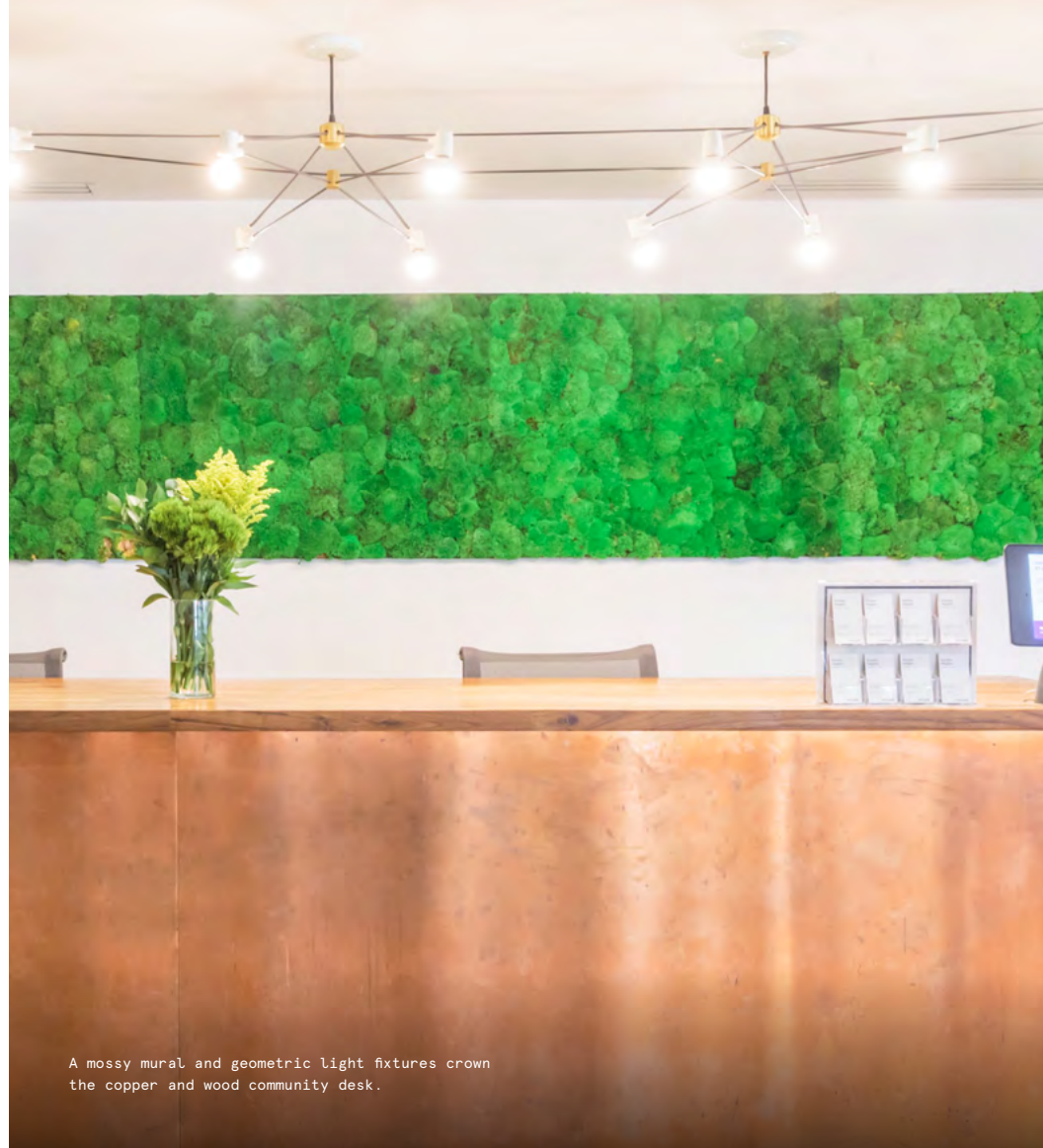
Move-in ready suites furnished & wired

12

TOTAL BUILDING FLOORS

225,684

TOTAL BUILDING SQ FT



An exciting workspace in the heart of DUMBO

Dumbo Heights is a 1.2 million square foot office and retail complex located in the heart of Brooklyn's coveted DUMBO neighborhood. Built in 1962, this complex's unique design features four industrial-style buildings connected by a skybridge. WeWork's four floors at Dumbo Heights feature a mix of private offices, art-filled lounges, and vibrant meeting rooms, as well as an upper-level terrace that provides members with breathtaking views of the city below.



Sleek pendant lighting and trailing plants hang above this sunny workspace.



Custom wall coverings reflect the space's botanical-inspired design elements.

Vibrant, inviting, and creative

Inspired by the bold creativity of Brooklyn itself, Dumbo Heights combines a fresh, modern space with vibrant colors, rich materials, and custom artwork. It is an eclectic, exciting space that feels both playful and polished.

- Dark wood floors and white ceilings create a neutral backdrop for the space's bold décor, artworks, and neon installations
- Custom millwork, wainscoting, and mid-century-inspired furnishings add traditional charm and character
- Patterned accent walls and tile work throughout the space create an artistic, energetic atmosphere



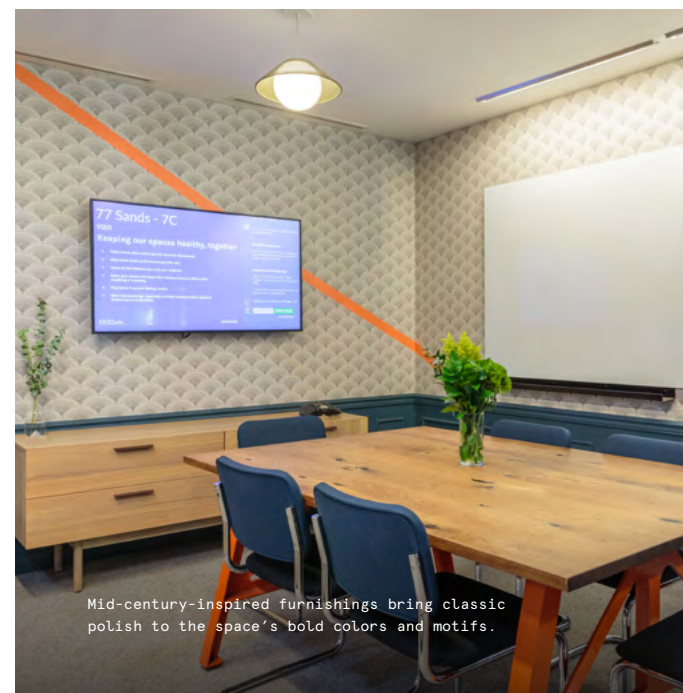
Olive-green wainscoting gives this meeting room a traditional-meets-modern twist.



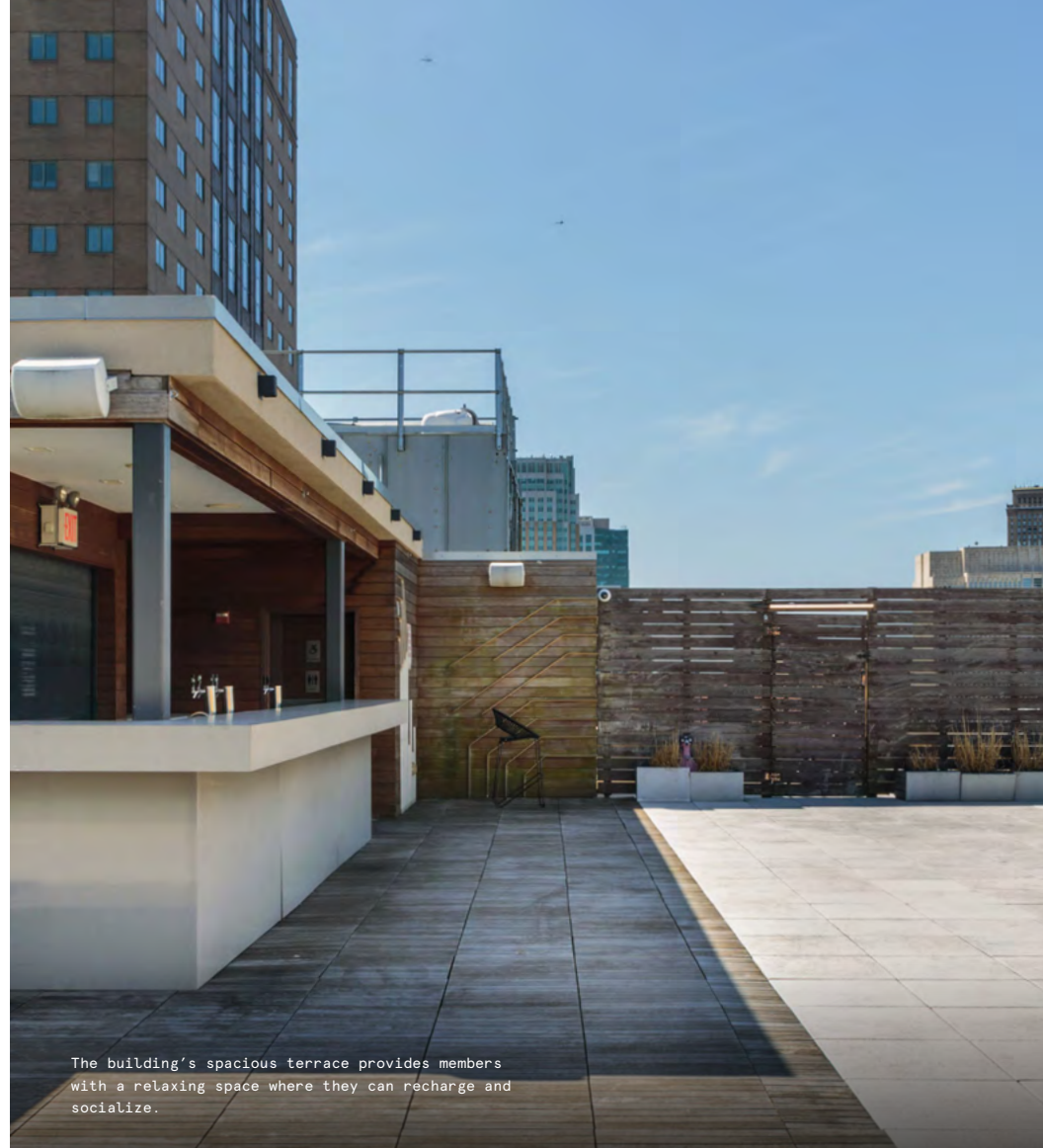
Sectionals in cool tones complement a vibrant collage-style mural in this spacious lounge.



Bright yellow tabletops stand out against this space's recessed seating nooks, complete with custom millwork and plaid-upholstered benches.



Mid-century-inspired furnishings bring classic polish to the space's bold colors and motifs.



On-site amenities

- 24/7 security
- Electronic keycard access
- Business-class printers
- Professional events and programming
- Stocked pantry
- US mail drop
- On-site staff
- Meeting rooms
- Mother's room
- Phone booths
- Wellness/meditation room
- Gender-neutral restrooms
- Outdoor space
- Dog-friendly spaces
- Bicycle storage

Building specifications



Hours of operation

Monday - Friday: 9am-6pm



Security

24/7 attended lobby
24/7 CCTV monitoring



Fire strategy

Fully-sprinklered floors



Building history

Renovated in 2015
Renovated by Spector Group



Elevators

3 passenger elevators
1 freight elevator



Building size

12 stories
225,684 SF











HVAC

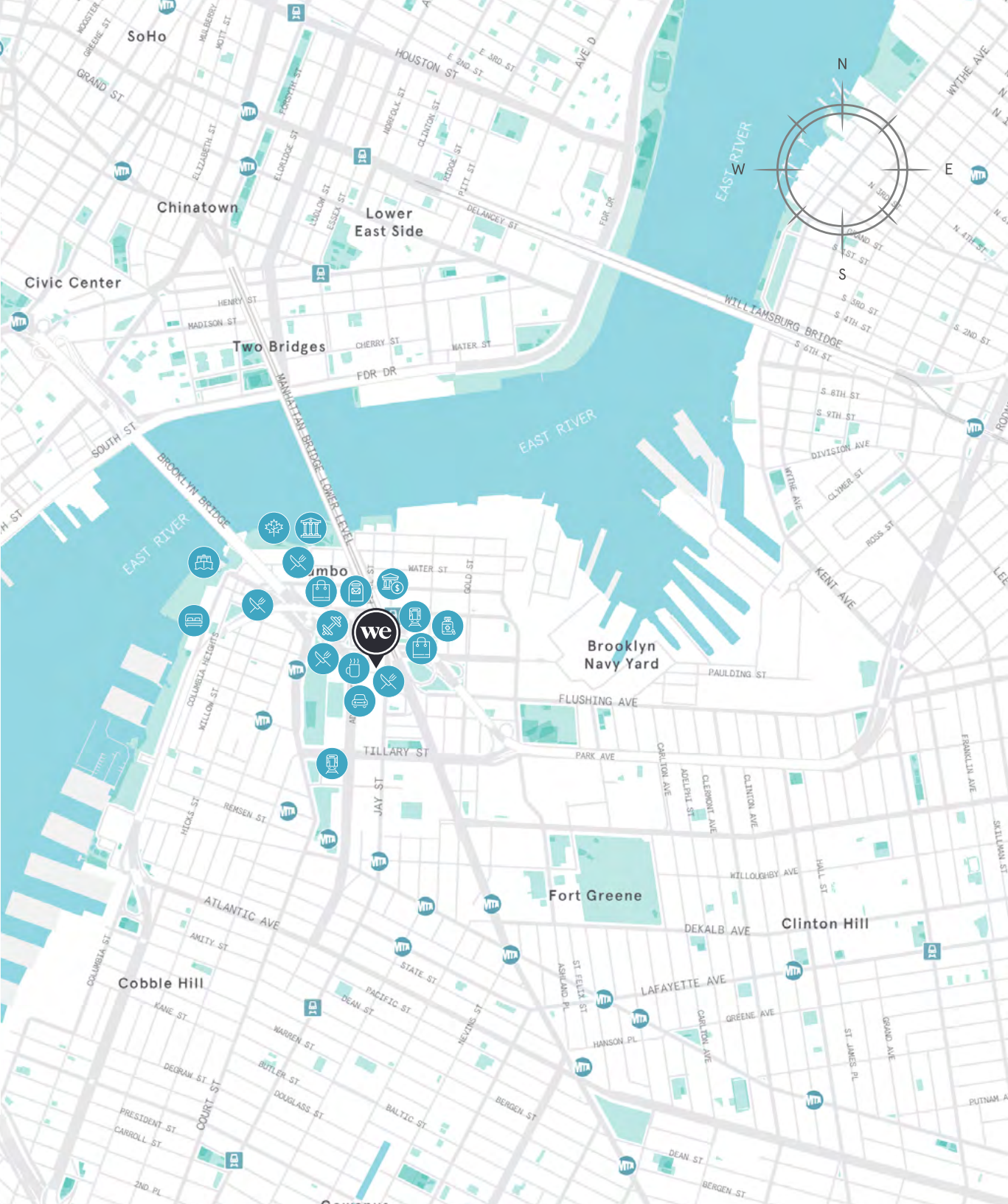
Monday - Friday: 8am-7pm
Saturday: 8am-1pm

Experience the heart of DUMBO

One of Brooklyn's most iconic neighborhoods, DUMBO is a thriving artistic community just beneath the Brooklyn–Queens Expressway. Thanks to its prime location, Dumbo Heights lets members take full advantage of DUMBO's best attractions, bars, and restaurants. Nearby favorite eateries include Westville DUMBO, Grimaldi's Pizzeria, and Randolph Beer, while Time Out Market provides ample dining options and events. Members can also stop by nearby landmarks like Jane's Carousel and a chapter of the Brooklyn Historical Society or stroll through Whitman Park, Main Street Park, or Bridge Park—all just a few blocks away. Plus, easy access to the A, C, and F lines makes for an easy commute.

Distance to WeWork

Citi Bike Station (Adams St. & Prospect Street)	 Walk	2 min
York Street Subway Station (F)	 Walk	3 min
High Street Subway Station (A, C)	 Walk	6 min
East River Ferry	 Walk	11 min
Atlantic Terminal/LIRR	 Train	20 min
Penn Station	 Train	25 min
Grand Central Terminal	 Train	30 min
JFK Airport	 Drive	50 min



6th Floor

17,622 RSF






4

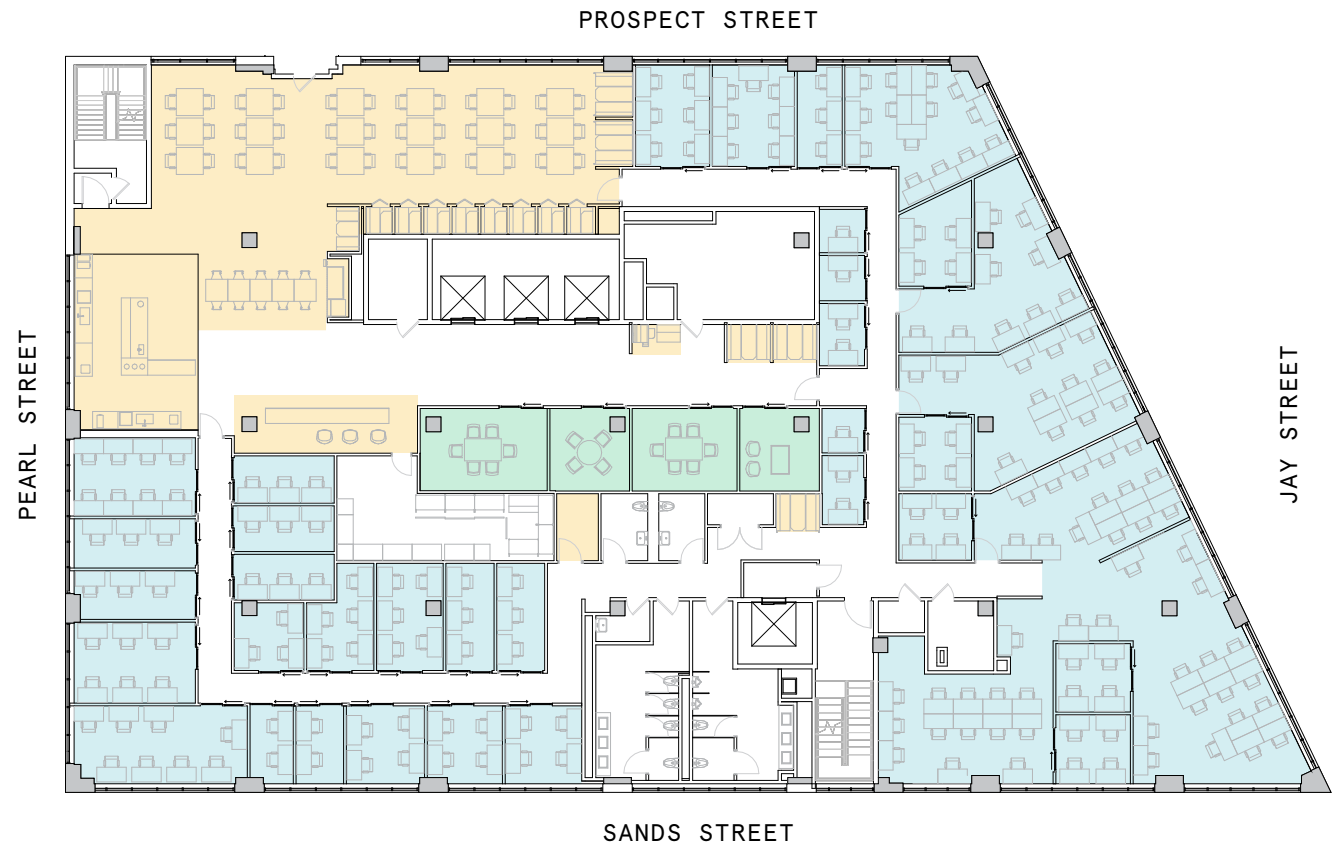
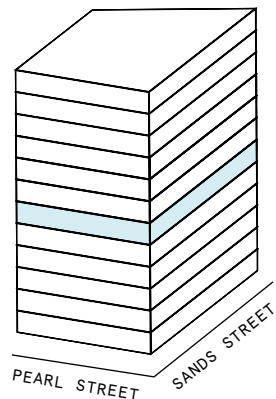
MEETING ROOM(S)

6

SHARED WORKSPACE(S)

LEGEND

-  MEETING ROOM
-  SHARED WORKSPACE
-  DEDICATED SPACE



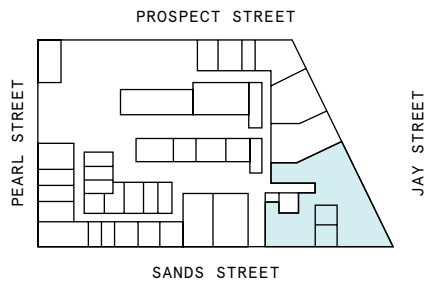
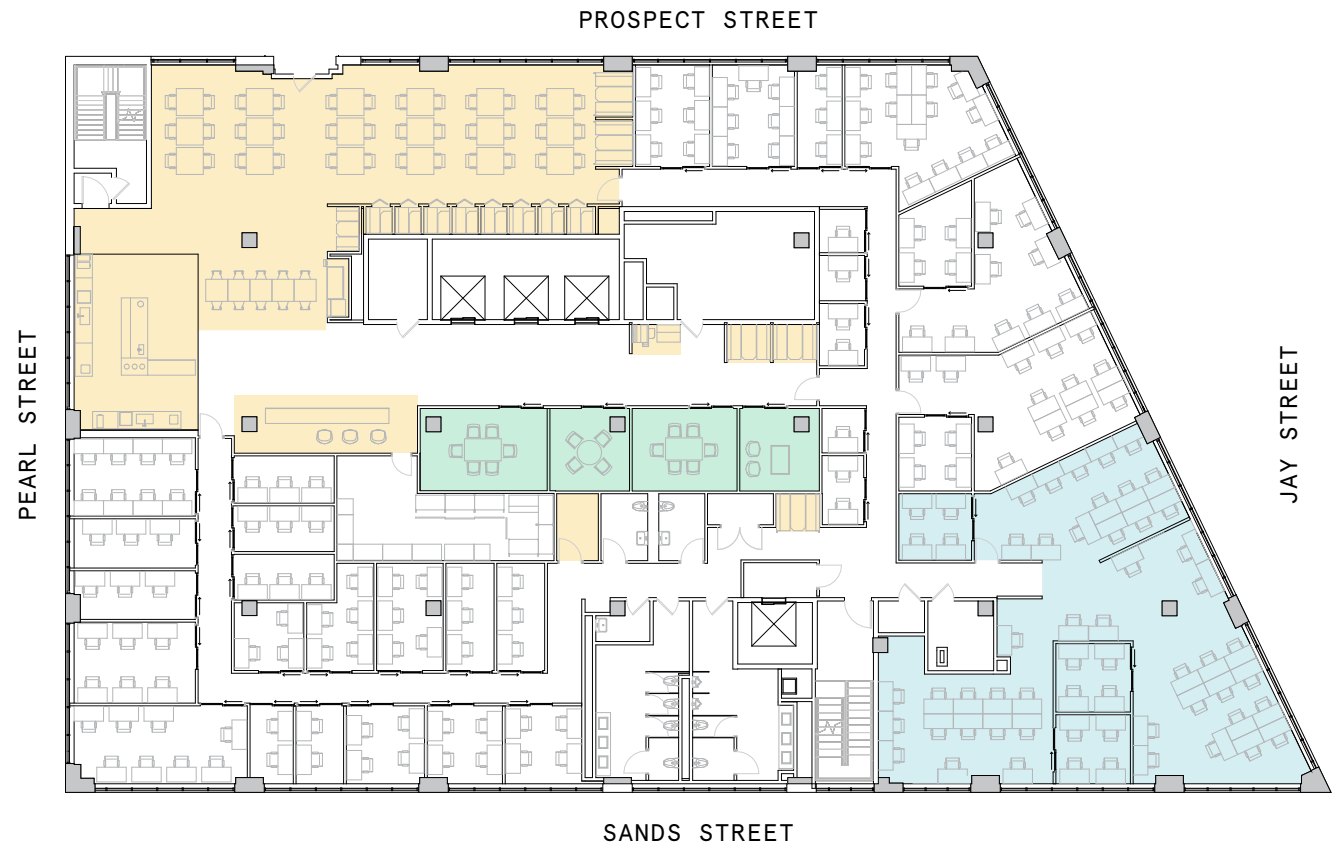
6th Floor

17,622 RSF

5,536 RSF Suite 6011

3

PRIVATE OFFICE(S)



Suite 6011

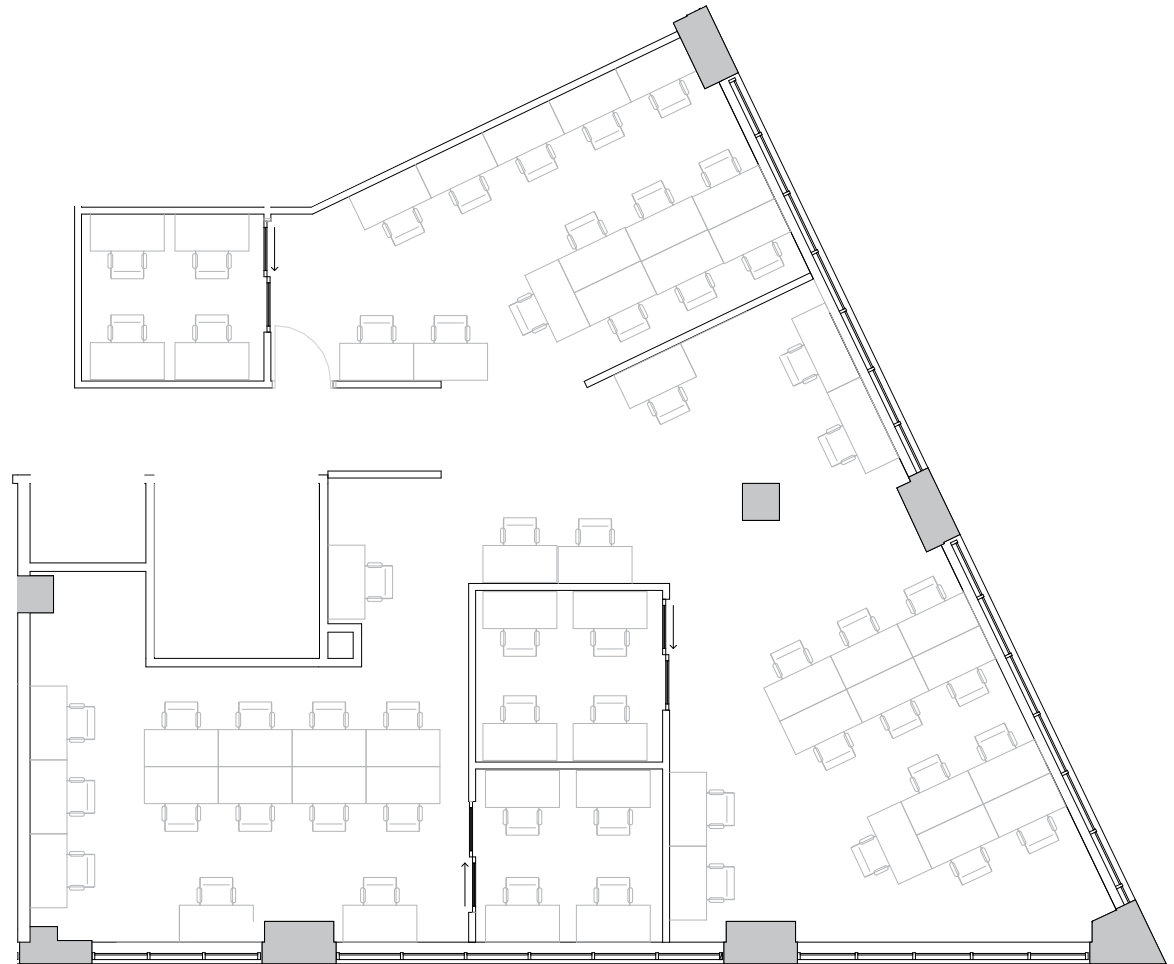
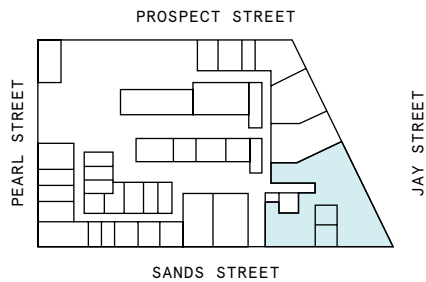
6th Floor

3

PRIVATE OFFICE(S)

5,536 RSF

RENTABLE AREA



7th Floor

19,198 RSF



5

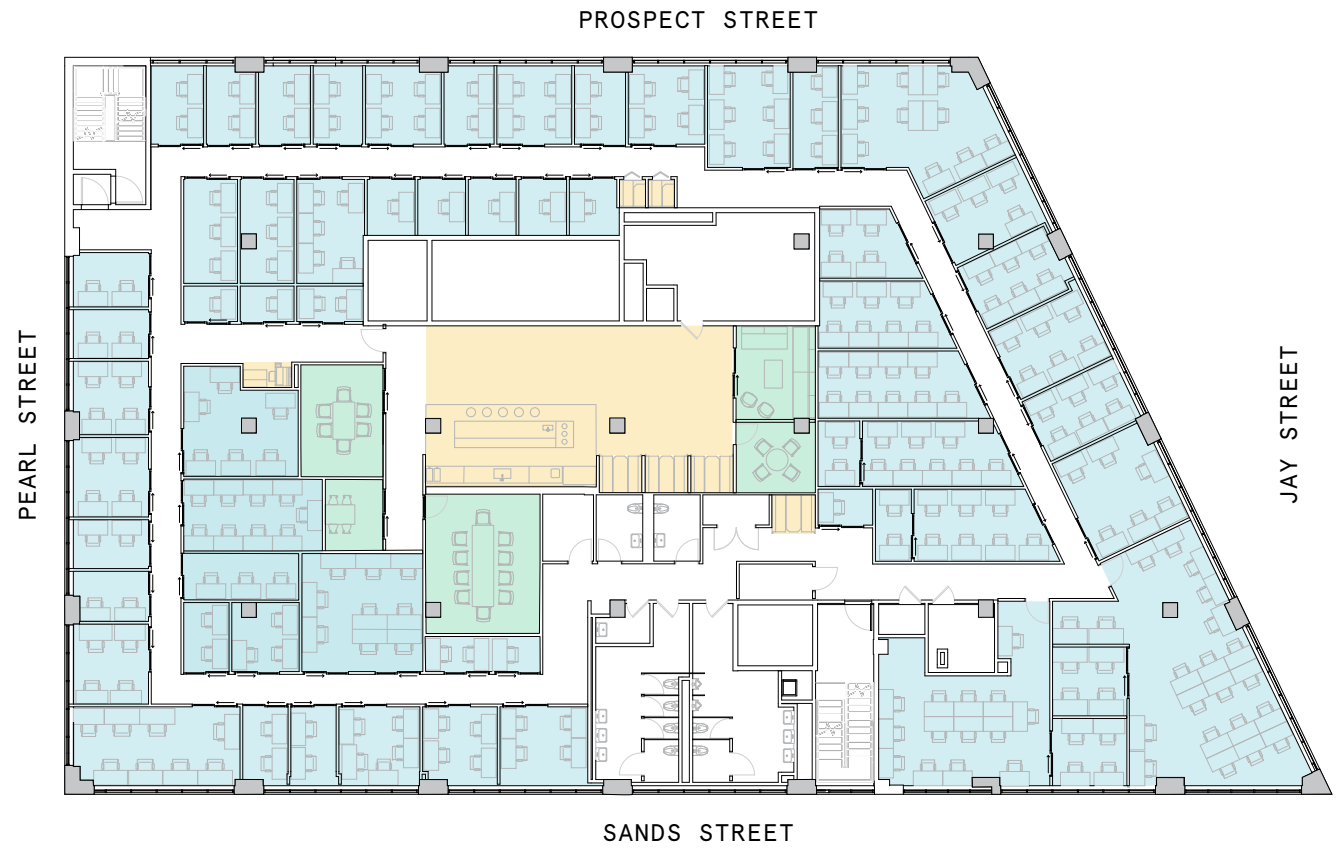
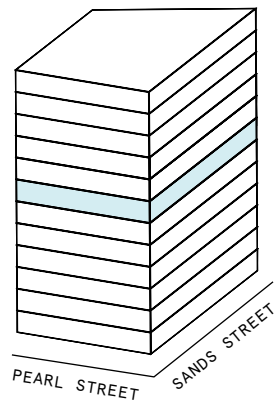
MEETING ROOM(S)

4

SHARED WORKSPACE(S)

LEGEND

- MEETING ROOM
- SHARED WORKSPACE
- DEDICATED SPACE



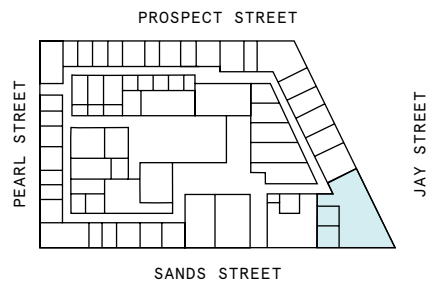
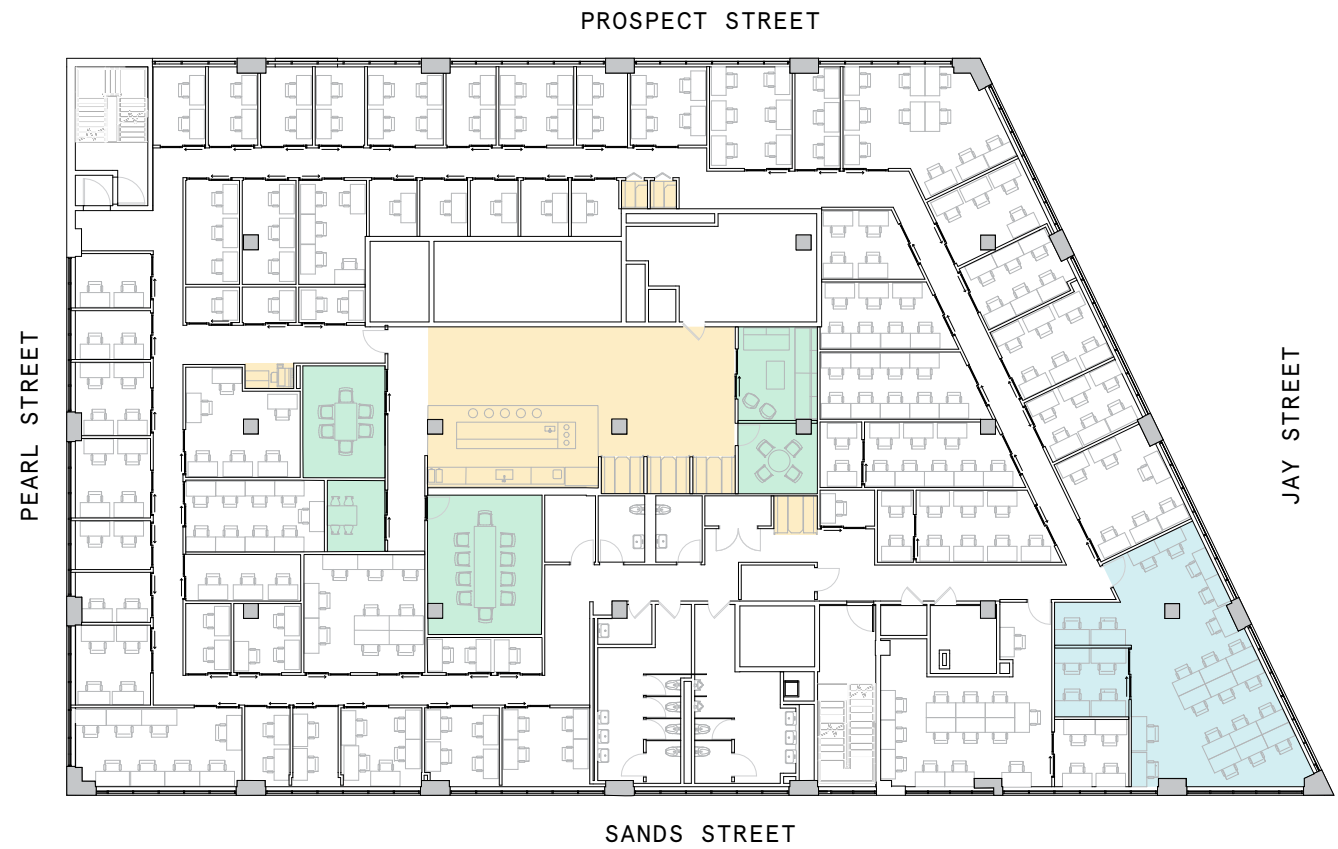
7th Floor

19,198 RSF

1,999 RSF Suite 7017

1

PRIVATE OFFICE(S)



Suite 7017

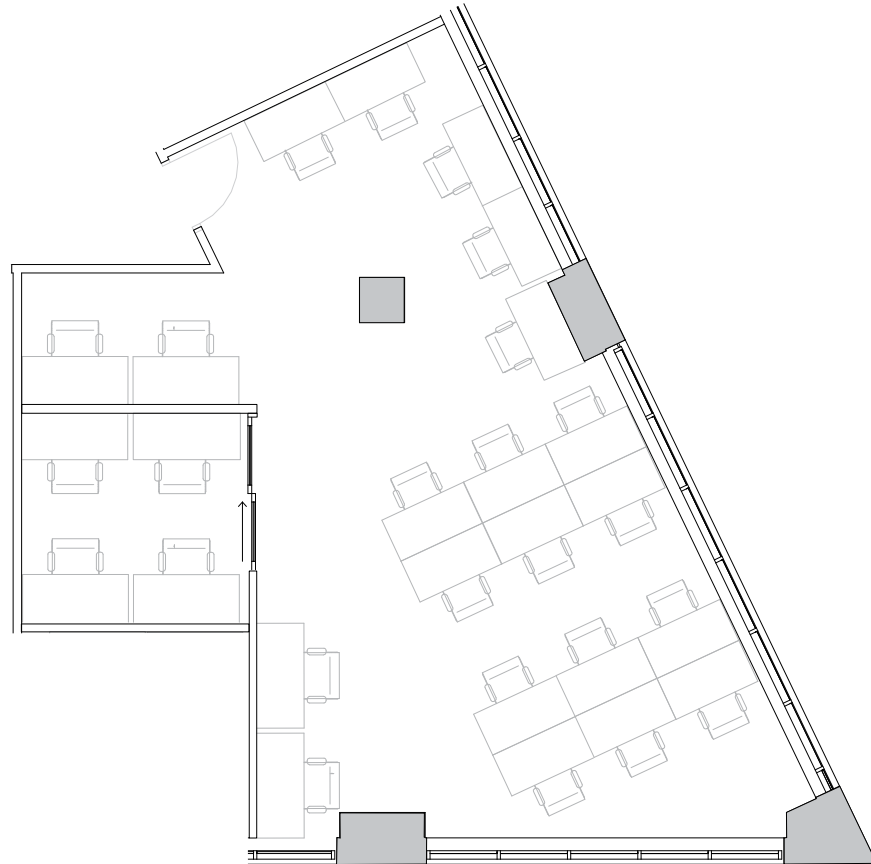
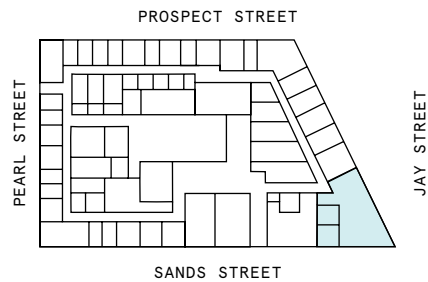
7th Floor

1

PRIVATE OFFICE(S)

1,999 RSF

RENTABLE AREA



8th Floor

19,204 RSF






3

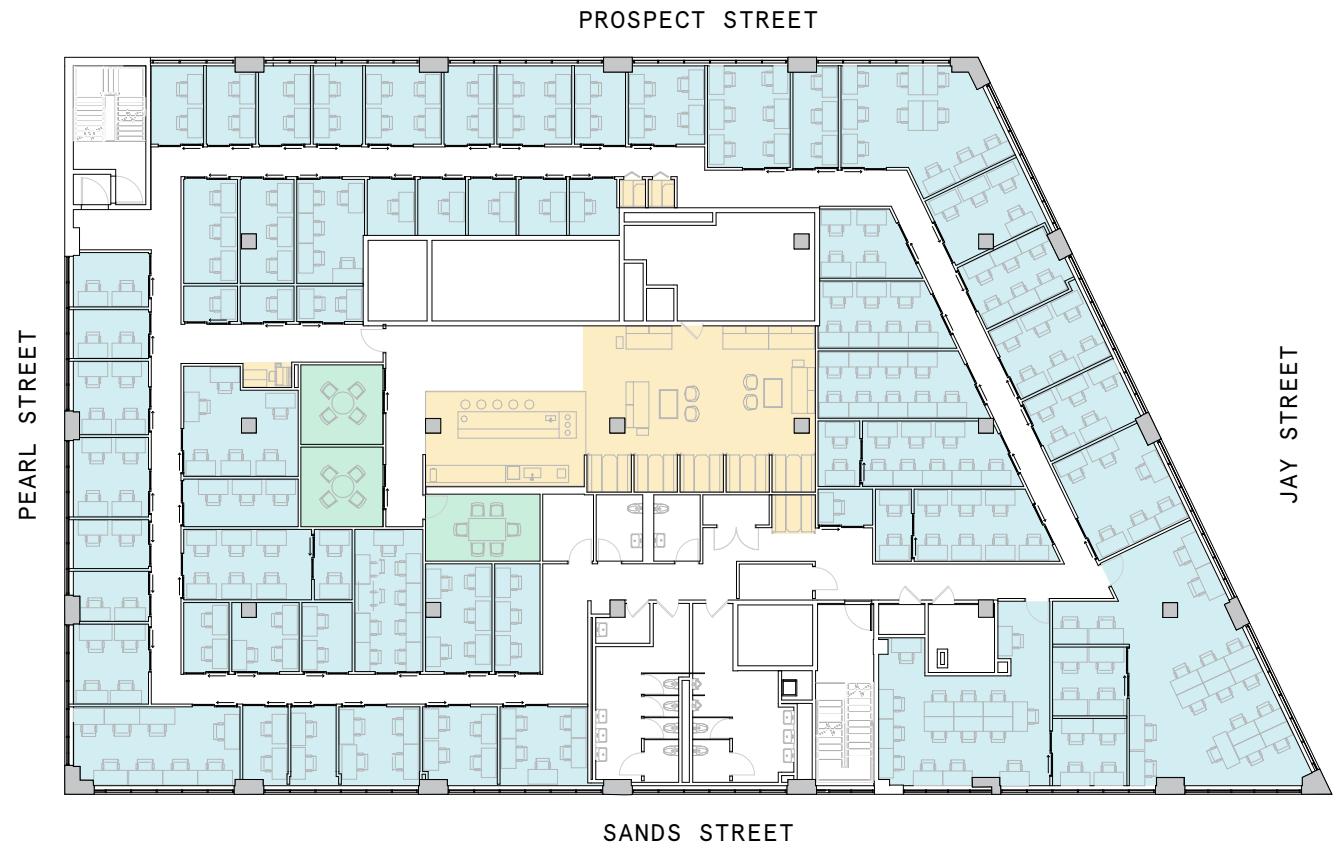
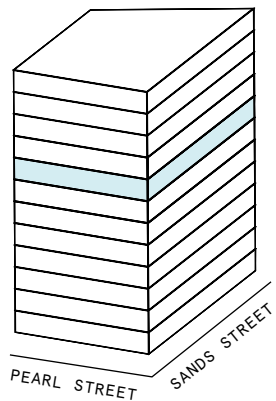
MEETING ROOM(S)

4

SHARED WORKSPACE(S)

LEGEND

-  MEETING ROOM
-  SHARED WORKSPACE
-  DEDICATED SPACE



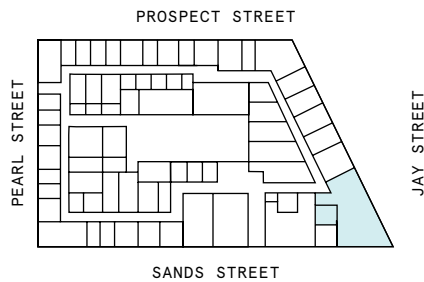
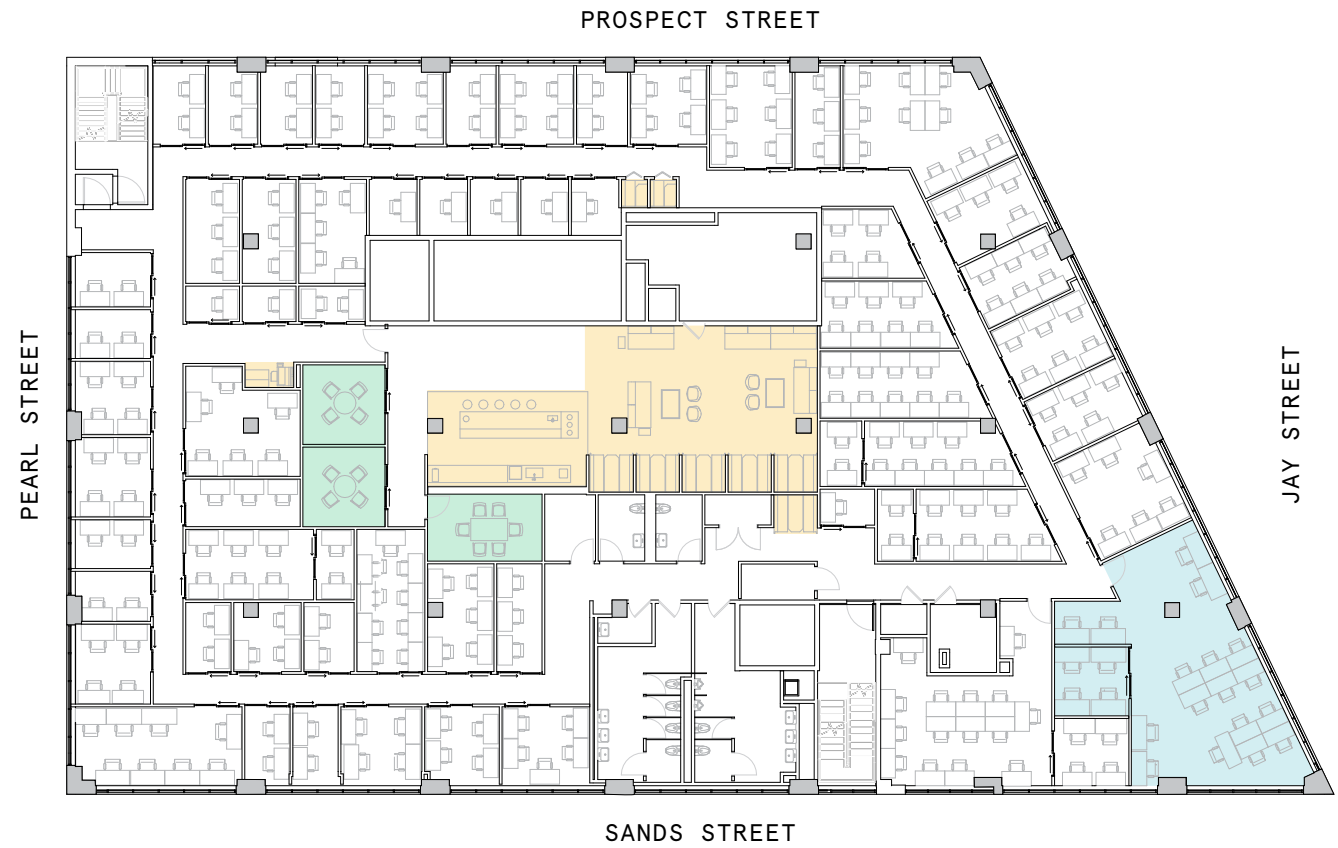
8th Floor

19,204 RSF

2,197 RSF Suite 8017

1

PRIVATE OFFICE(S)



Suite 8017

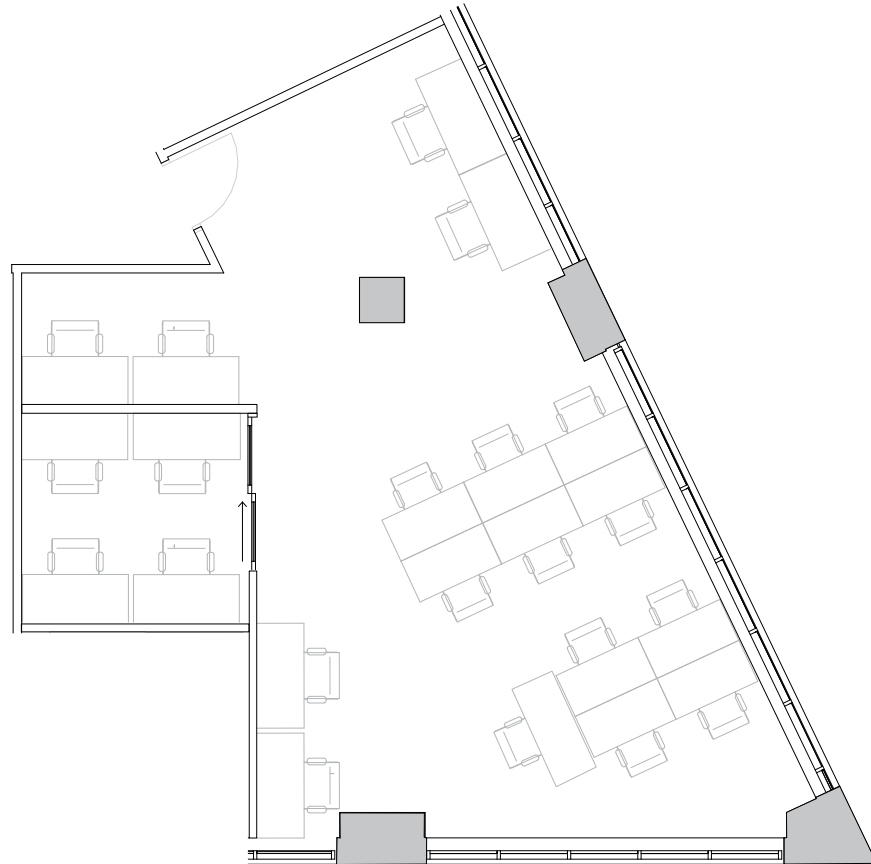
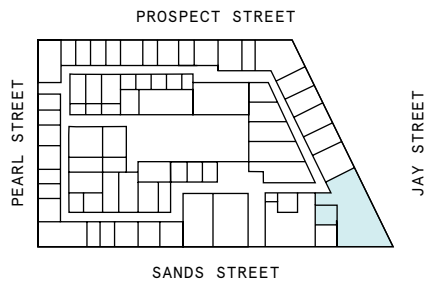
8th Floor

1

PRIVATE OFFICE(S)

2,197 RSF

RENTABLE AREA



9th Floor

19,204 RSF



5

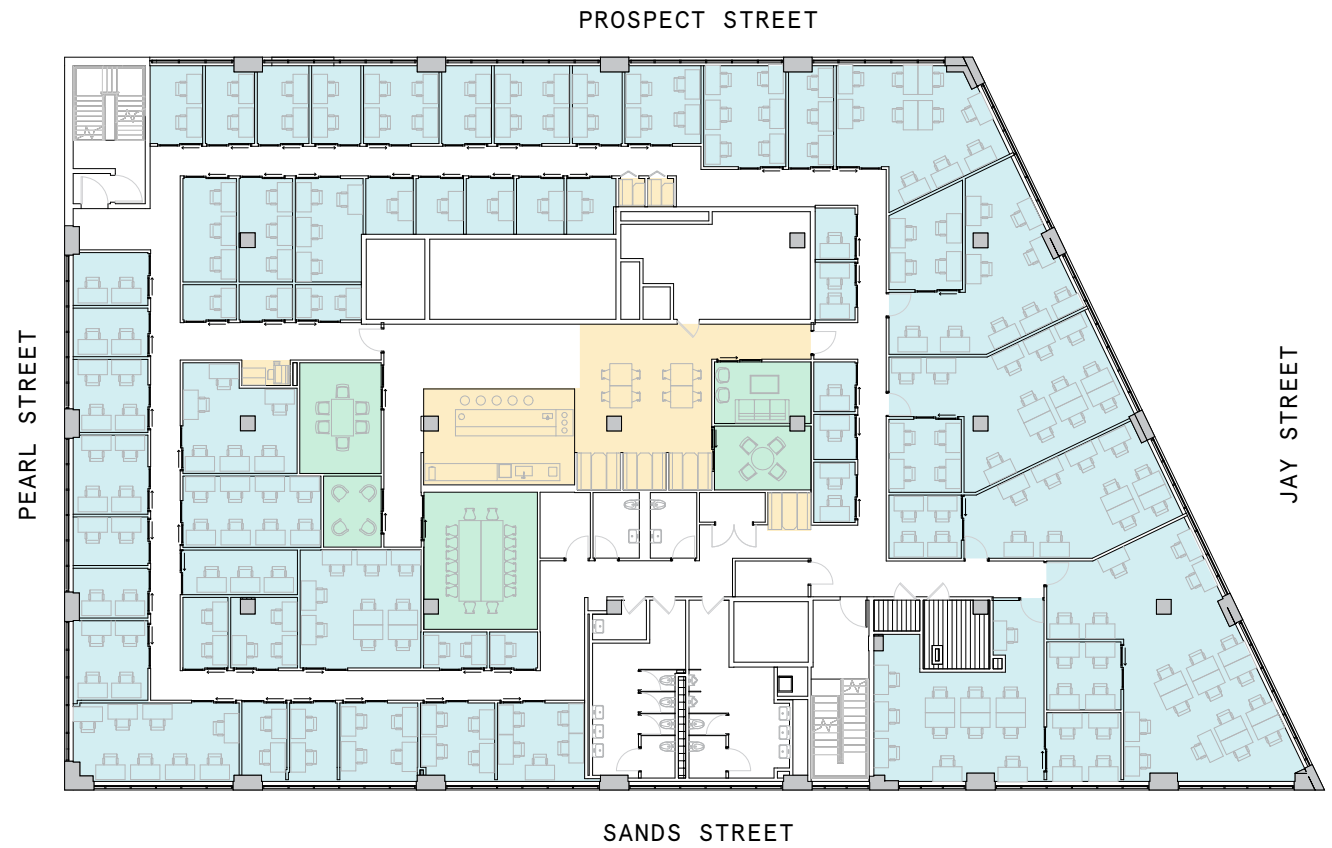
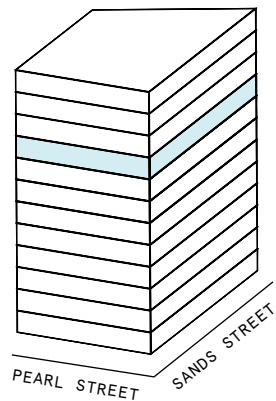
MEETING ROOM(S)

4

SHARED WORKSPACE(S)

LEGEND

- MEETING ROOM
- SHARED WORKSPACE
- DEDICATED SPACE



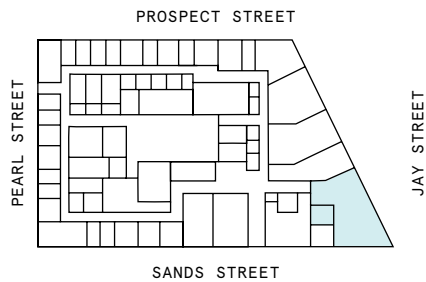
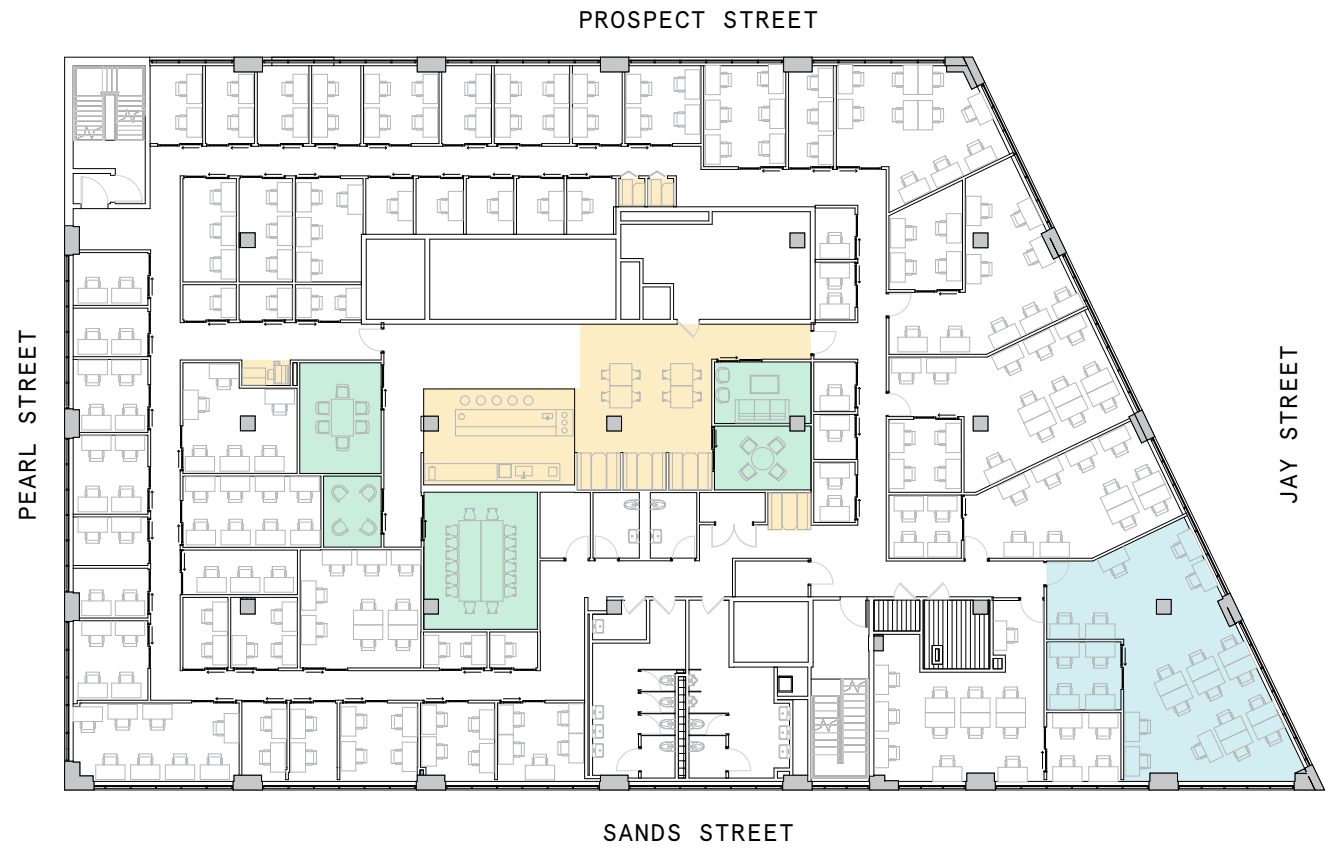
9th Floor

19,204 RSF

2,080 RSF Suite 9018

1

PRIVATE OFFICE(S)



Suite 9018

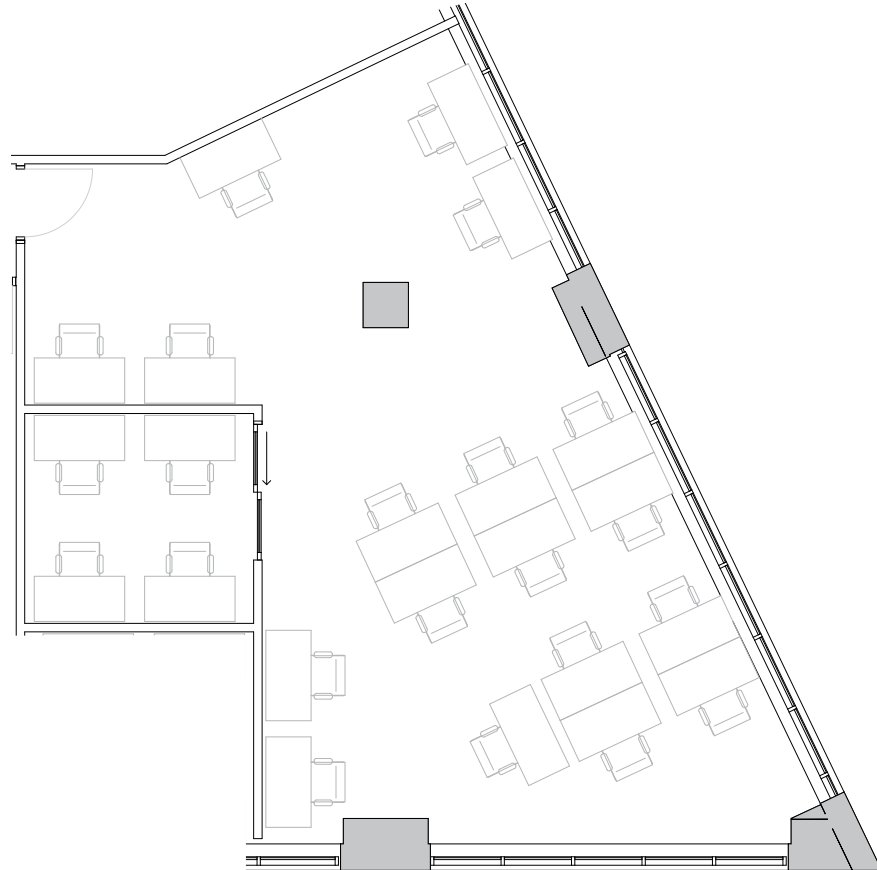
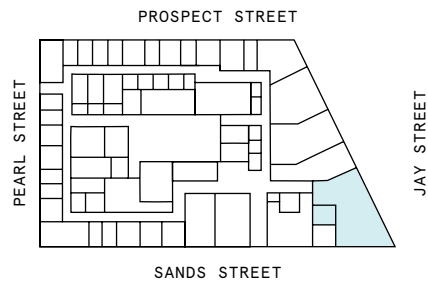
9th Floor

1

PRIVATE OFFICE(S)

2,080 RSF

RENTABLE AREA



Contact

For leasing inquiries please
reach out to our team.



Arthur Forni

LEASING DIRECTOR
ARTHUR.FORNI@WEWORK.COM

Tori Bloom

LEASING MANAGER
TORI.BLOOM@WEWORK.COM
917.408.3823