

HIGHLY VISIBLE EDUCATIONAL FACILITY FOR SALE



**41 SOUTH ROUTE 73
WINSLOW, NJ**

Evan Zweben
Executive Vice President
856.261.5548
evan.zweben@wolfcre.com

Corey Hassman
Senior Advisor
856.261.5812
corey.hassman@wolfcre.com



The foregoing information was furnished to us by sources which we deem to be reliable, but no warranty or representation is made as to the accuracy thereof.
Subject to correction of errors, omissions, change of price, prior sale or withdrawal from market without notice.



Wolf Commercial Real Estate
www.WolfCRE.com



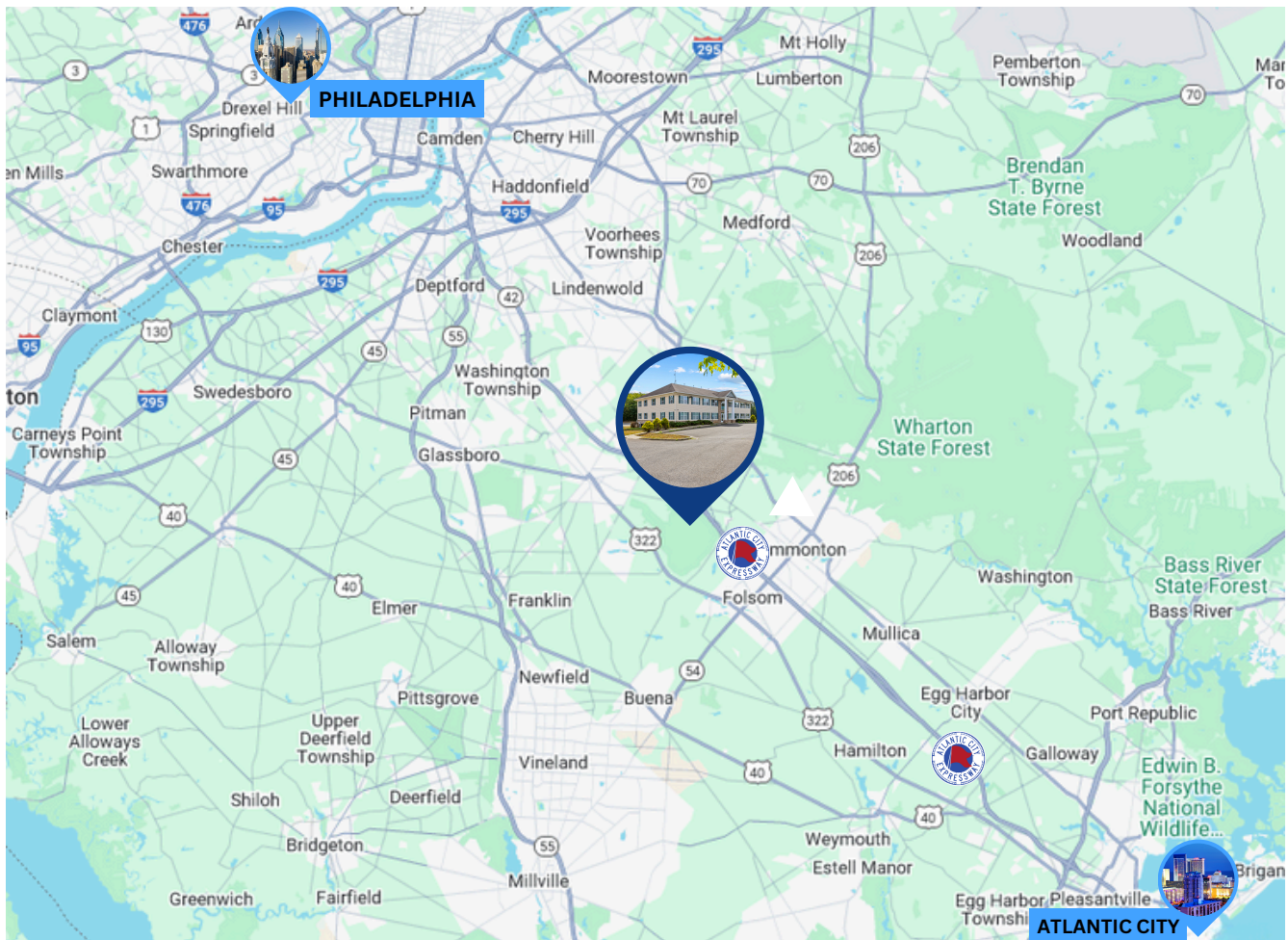
PROPERTY DESCRIPTION

Location:	41 South Route 73 Winslow, NJ 08095
Size/SF Available:	+/- 11,000 SF plus +/- 5,500 SF finished basement
Sale Price:	\$1,175,000.00
Parking:	63 parking spaces
Acres:	Situated on 2.11 acres

PROPERTY AREA/HIGHLIGHTS

- Move-in condition/recently renovated
- Currently laid out as a school with large classrooms, private offices, and open areas
- Easily converted to office or medical facility
- Elevator served
- Excellent visibility along Route 73
- 5 miles to AC expressway, 38 miles to Atlantic City, and 25 miles to Center City, Philadelphia

AERIAL MAP



The foregoing information was furnished to us by sources which we deem to be reliable, but no warranty or representation is made as to the accuracy thereof. Subject to correction of errors, omissions, change of price, prior sale or withdrawal from market without notice.

ADDITIONAL PHOTOS



The foregoing information was furnished to us by sources which we deem to be reliable, but no warranty or representation is made as to the accuracy thereof. Subject to correction of errors, omissions, change of price, prior sale or withdrawal from market without notice.