

# Lot for Sale - 1.78 Acres

NEC Sharp Dr & Center Ct  
Shorewood, IL

Walmart\*



MARIANO'S

Black Rd

Sharp Dr

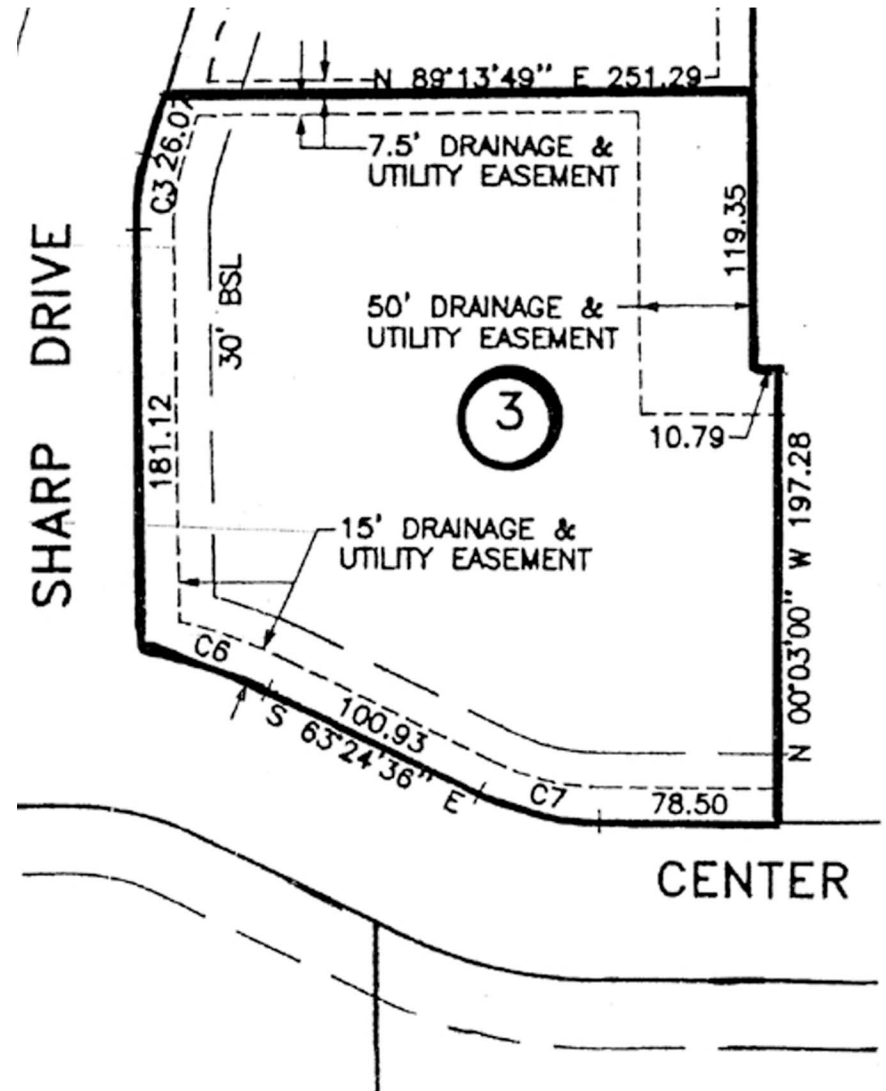
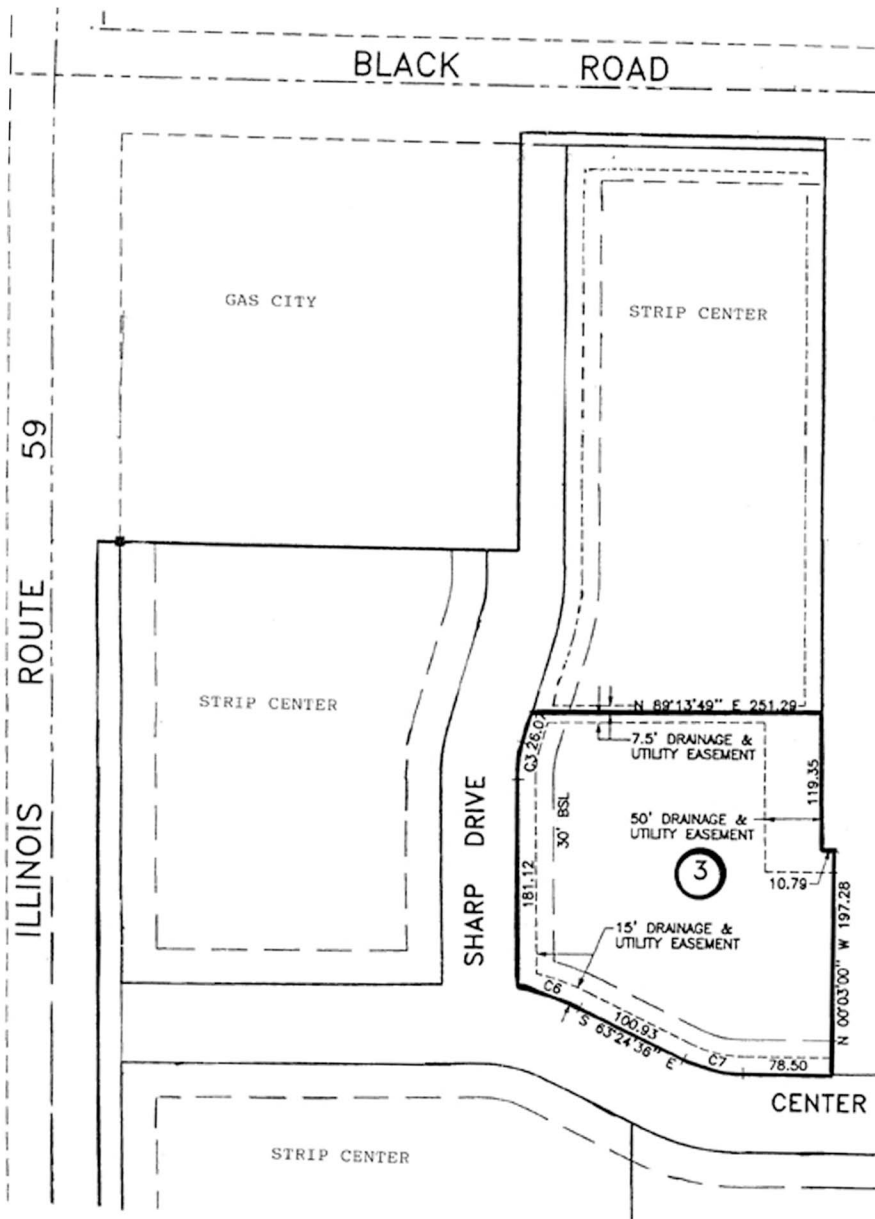
Center Ct

Route 59



SITE

# NEC Sharp Dr & Center Ct Shorewood, IL



# Will County, Illinois

Tax Assessment Map

Revised for the 2016 Assessment

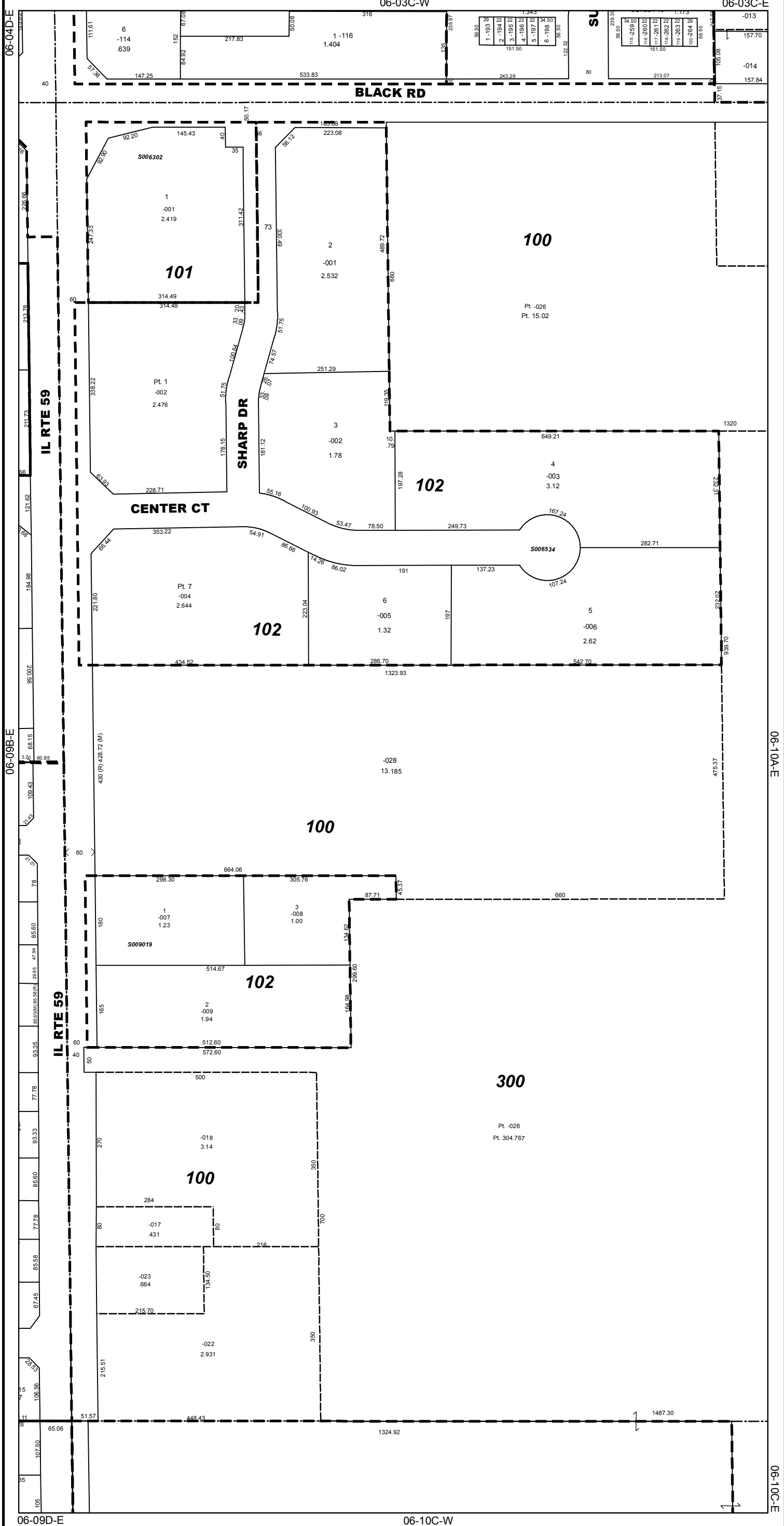
Copyrighted 2016 by Will County GIS Department

Disclaimer of Warranties and Accuracy of Data  
Although the data developed by Will County for its maps, websites, and Geographic Information System has been produced and processed from sources believed to be reliable, no warranty, expressed or implied, is made regarding accuracy, adequacy, completeness, legality, reliability or usefulness of any information. This disclaimer applies to both isolated and aggregate uses of the information. The County and elected officials provide this information on an "as is" basis. All warranties of any kind, express or implied, including but not limited to the implied warranties of merchantability, fitness for a particular purpose, freedom from contamination by computer viruses or hackers and non-infringement of proprietary rights are disclaimed. Changes may be periodically made to the information herein; these changes may or may not be incorporated in any new version of the publication. If you have obtained information from any of the County web pages from a source other than the County pages, be aware that electronic data can be altered subsequent to original distribution. Data can also quickly become out of date. It is recommended that careful attention be paid to the contents of any data, and that the originator of the data or information be contacted with any questions regarding appropriate use. Please direct any questions to Mapping & Planning at (815) 740-4664.



Lawrence M. Walsh  
County Executive  
Rhonda R. Novak  
Supervisor of Assessments

Subdivision List  
-S006302  
Gas City Sub  
R99-136130  
-S006534  
Sharp Commercial Center  
R2000-011741  
-S009019  
Brookforest Centre PUD  
R2007-146852



# Demographic Summary Report

1990 - 2000 Census, 2015 Estimates & 2020 Projections

Calculated using TAS Retrieval Retrieval

Dec, 2016

Latitude: 41.534210 Longitude: -88.197285

Sharp Dr & Center Ct Shorewood, IL		1.00 Mile Radius	3.00 Mile Radius	5.00 Mile Radius	10.00 Mile Radius
Population	Q4 2015 Estimated Population	8,136	70,737	151,623	372,625
	2020 Projected Population	8,976	76,489	163,946	403,800
	2010 Census Population	7,793	69,036	148,182	363,253
	2000 Census Population	3,758	44,141	94,969	241,368
	1990 Census Population	2,705	23,252	64,255	175,654
	Historical Annual Growth 1990 to 2000	3.34%	6.62%	3.98%	3.23%
	Historical Annual Growth 2000 to 2010	7.57%	4.57%	4.55%	4.17%
	Estimated Annual Growth 2010 to 2015	0.75%	0.42%	0.40%	0.44%
	Projected Annual Growth 2015 to 2020	1.99%	1.58%	1.58%	1.62%
	Median Age	37.1	36.6	36.5	35.3
Households	Q4 2015 Estimated Households	2,786	23,892	52,890	122,617
	2020 Projected Households	3,070	25,891	57,249	133,001
	2010 Census Households	2,673	23,268	51,579	119,579
	2000 Census Households	1,327	15,013	34,687	82,645
	1990 Census Households	883	7,944	23,435	59,066
	Historical Annual Growth 1990 to 2000	4.16%	6.57%	4.00%	3.42%
	Historical Annual Growth 2000 to 2015	7.25%	4.48%	4.05%	3.76%
	Estimated Annual Growth 2000 to 2015	0.72%	0.46%	0.44%	0.44%
	Projected Annual Growth 2015 to 2020	1.97%	1.62%	1.60%	1.64%
	Population per Household	2.92	2.95	2.84	2.98
Population by Race	White	72.3%	72.8%	69.5%	62.5%
	Black or African American	6.0%	7.0%	8.9%	11.6%
	Asian & Pacific Islander	2.2%	2.1%	2.4%	3.4%
	Other Races	1.8%	1.8%	1.8%	1.8%
	Hispanic Population	17.7%	16.3%	17.5%	20.8%
Income	Average Household Income	\$88,469	\$91,021	\$83,568	\$82,449
	Median Household Income	\$80,470	\$78,532	\$71,374	\$69,152
	Per Capita Income	\$30,319	\$30,801	\$29,336	\$27,387
Education (Age 25+)	Elementary	4.2%	3.5%	3.9%	5.5%
	Some High School	4.3%	4.7%	5.6%	6.5%
	High School Graduate	27.6%	25.8%	27.8%	28.3%
	Some College	24.6%	25.1%	25.0%	23.7%
	Associates Degree Only	9.5%	9.6%	8.9%	8.5%
	Bachelors Degree Only	21.3%	21.4%	19.5%	18.2%
	Graduate Degree	8.5%	9.8%	9.4%	9.4%
Business	Number of Businesses	152	1,373	3,339	7,496
	Total Number of Employees	1,767	20,646	53,340	122,539
	Employees per Business	11.63	15.04	15.97	16.35
	Residential Population per Business	53.53	51.53	45.41	49.71

This report was produced using data from private and government sources deemed to be reliable and is herein provided without representation or warranty.