

# Mission Viejo Commerce Center

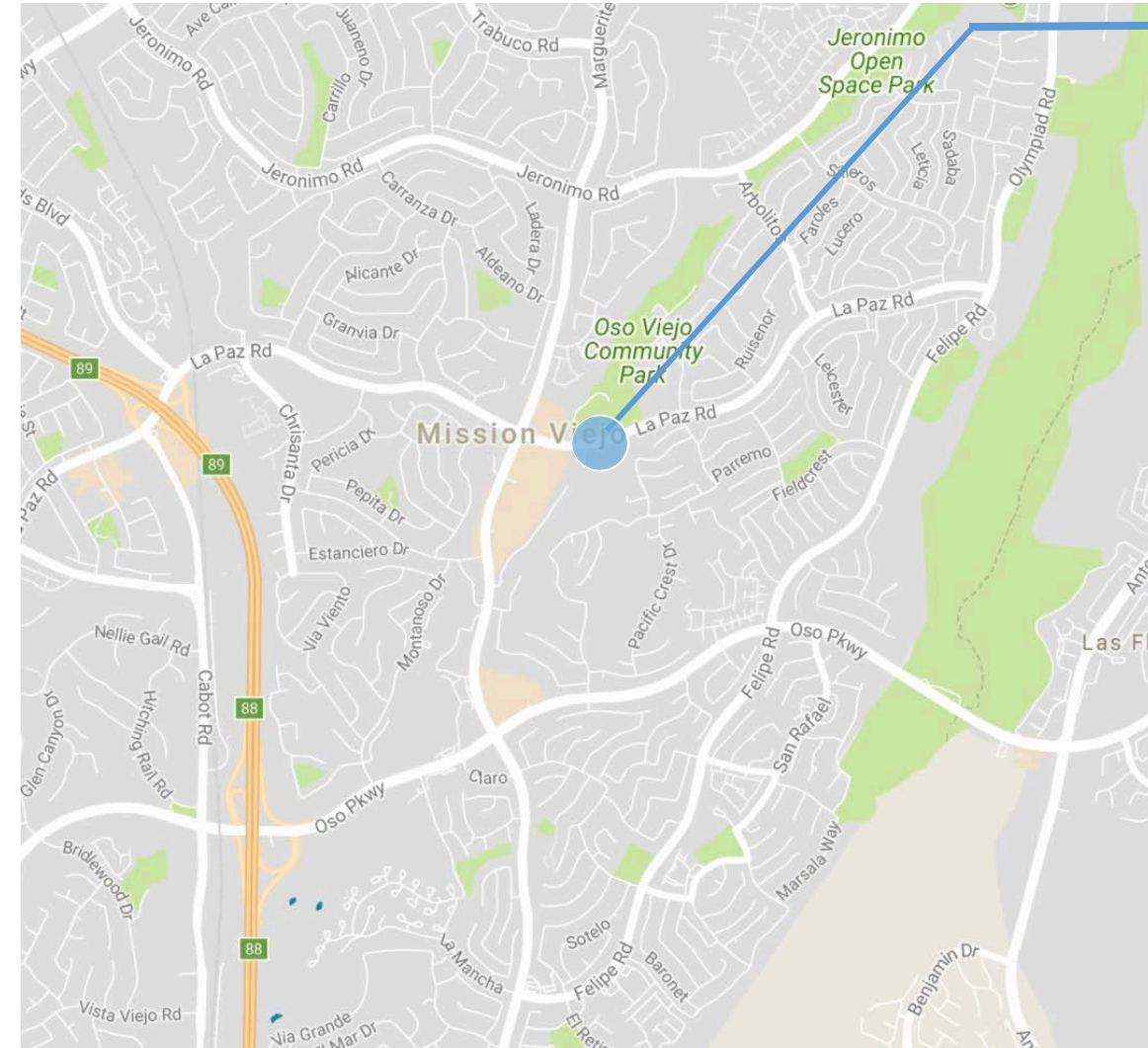


27210 - 27240 La Paz Road  
Mission Viejo, CA

# For Lease

## Mission Viejo Commerce Center

27210-27240 La Paz Road  
Mission Viejo, CA



### Property Highlights:

- Located along La Paz Road, a major South Orange County arterial
- High income trade area with average household incomes of approximately \$167,106 in a 1 mile radius
- Close proximity to I-5 Freeway
- Adjacent retailers include Ralphs, CVS, Trader Joe's, Party City, Big Lots, and many more

### Demographics:

2021 Estimates	1 MILE	2 MILE	3 MILE
Population	17,564	59,313	124,071
AHH Income	\$176,529	\$170,764	\$163,998



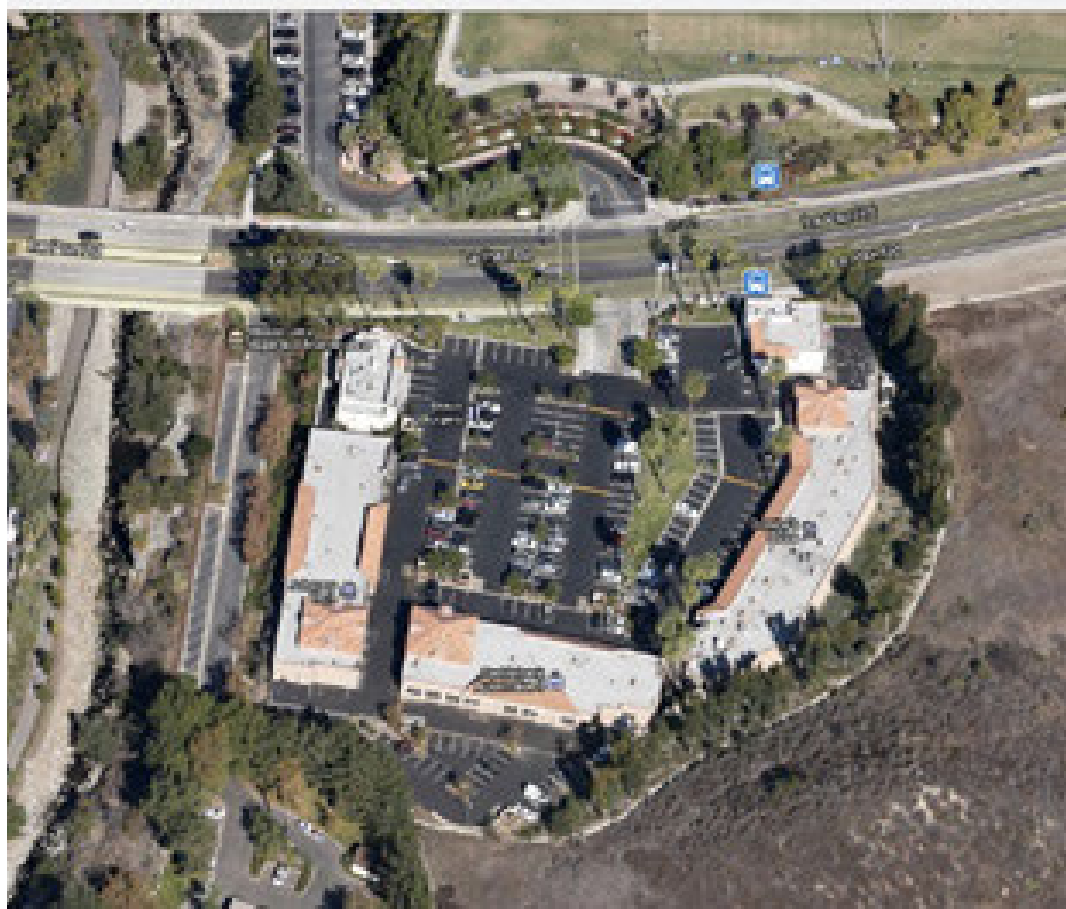
**TERRY BORTNICK**  
Tel: 888-301-1888 x 2  
terry@axiomra.com  
CA DRE License #01005344

[www.axiomra.com](http://www.axiomra.com)

Note: While the information contained herein is from sources deemed reliable and is believed to be correct, it is not in any way warranted or guaranteed by Axiom Retail Advisors.

# For Lease Mission Viejo Commerce Center

27210-27240 La Paz Road  
Mission Viejo, CA



TERRY BORTNICK  
Tel: 888-301-1888 x 2  
terry@axiomra.com  
CA DRE License #01005344

[www.axiomra.com](http://www.axiomra.com)