



SCHACKER REALTY

Exclusive Listing

5,460 sq. ft. of Office Space For Lease
3017-3023 Hempstead Tpke, Levittown



Specifications:

Parking: Excellent
Sewers: Yes

Pricing and Timing:

Occupancy: 30 Days
Lease Price: \$25.00/sq. ft. Gross

Second floor office suite includes private offices, conference rooms, open bullpen and male/female restrooms • Elevator construction estimated to be completed Q3 2025 • Hempstead Turnpike exposure, adjacent to Tri-County Flea Market



Chris Ferencsik, Associate RE Broker
516-527-3334 (cell)
631-293-3700 x25
cf@schackerrealty.com



Anthony Filipelli, RE Salesperson
516-312-2339 (cell)
631-293-3700 x30
af@schackerrealty.com

All information is subject to errors, omissions, modification, and withdrawal.
Measurements may be estimates and information shown should not be relied upon without independent verification.



SCHACKER REALTY

3017-3023 Hempstead Tpke, Levittown

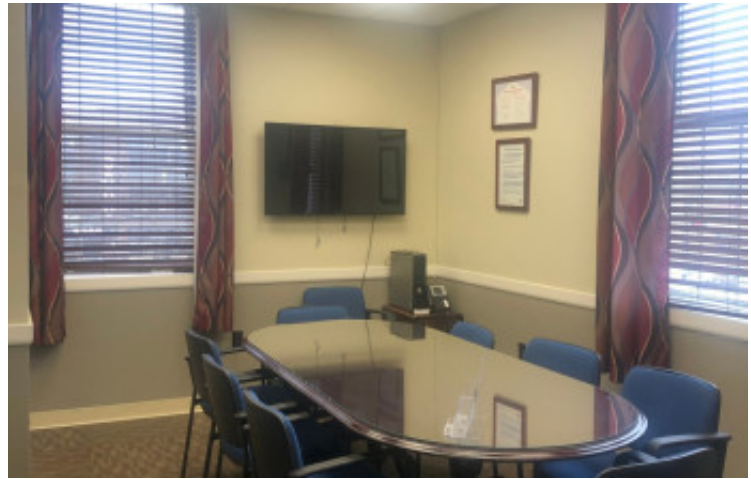


All information is subject to errors, omissions, modification, and withdrawal.
Measurements may be estimates and information shown should not be relied upon without independent verification.

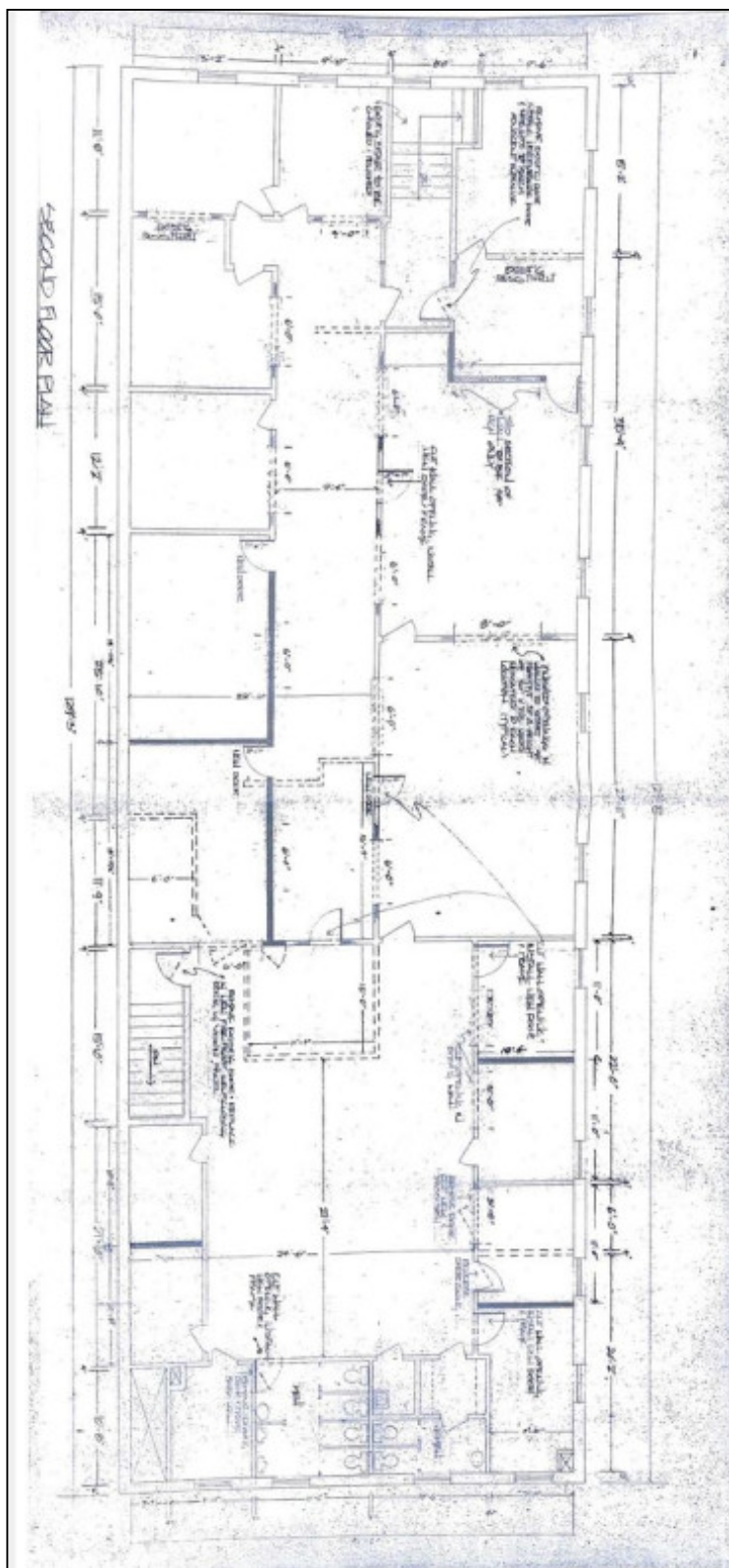


SCHACKER REALTY

3017-3023 Hempstead Tpke, Levittown



All information is subject to errors, omissions, modification, and withdrawal.
Measurements may be estimates and information shown should not be relied upon without independent verification.



All information is subject to errors, omissions, modification, and withdrawal.
Measurements may be estimates and information shown should not be relied upon without independent verification.