

FOR SALE

919 N PLUM GROVE ROAD
SCHAUMBURG, IL 60173
WOODFIELD LAKE OFFICE COURT

CONTACT US TODAY:

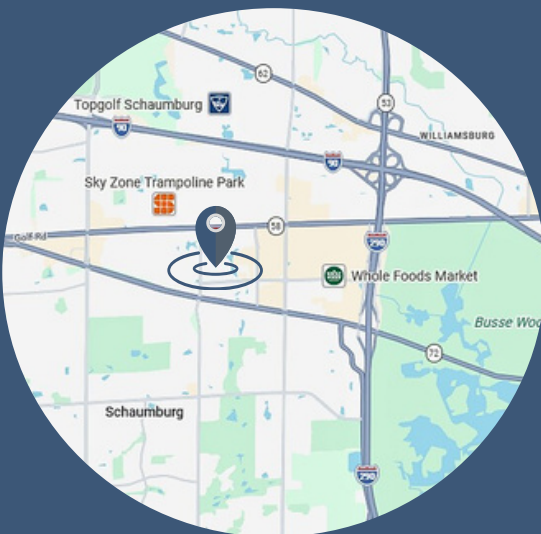
Andrea Hauger

847-706-7153

ahauger@owenwagener.com

Owen Wagener & Co.
37 Sherwood Terrace, Suite 122
Lake Bluff, IL 60044
www.owenwagener.com

MULTI-TENANT OFFICE BUILDING



OVERVIEW:

LOCATED IN THE WOODFIELD LAKE OFFICE COURT, THE PROPERTY OFFERS AN 8-UNIT OFFICE BUILDING CONSISTING OF 10,590 SQUARE FEET. GREAT OPPORTUNITY FOR AN OWNER-USER WHILE PROVIDING STEADY RENTAL INCOME.

SPECS:

- PRIVATE WASHROOMS & KITCHENETTES IN UNITS
- MINUTES FROM I-90 & RT. 53 INTERCHANGE - EXCELLENT ACCESSIBILITY
- ABUNDANT NATURAL LIGHT THROUGHOUT
- BEAUTIFULLY LANDSCAPED OFFICE PARK SETTING
- AMPLE ON-SITE PARKING SPACES

Space Available:	4,613 SF
Total Building Size:	10,590 SF
Description:	Premium Office Building
Parking:	4.00/1,000 SF
Year Built	1985
Pin Number:	07-14-200-074-1001/1002
Heat:	Gas Forced Air & AC
Sale Price:	Subject to Offer

All information herein is from sources deemed reliable but not guaranteed accurate. Subject to errors, omissions, and to changes of price and terms, prior sale or lease, all without notice.

919 N PLUM GROVE ROAD
SCHAUMBURG, IL 60173

10,590 SF

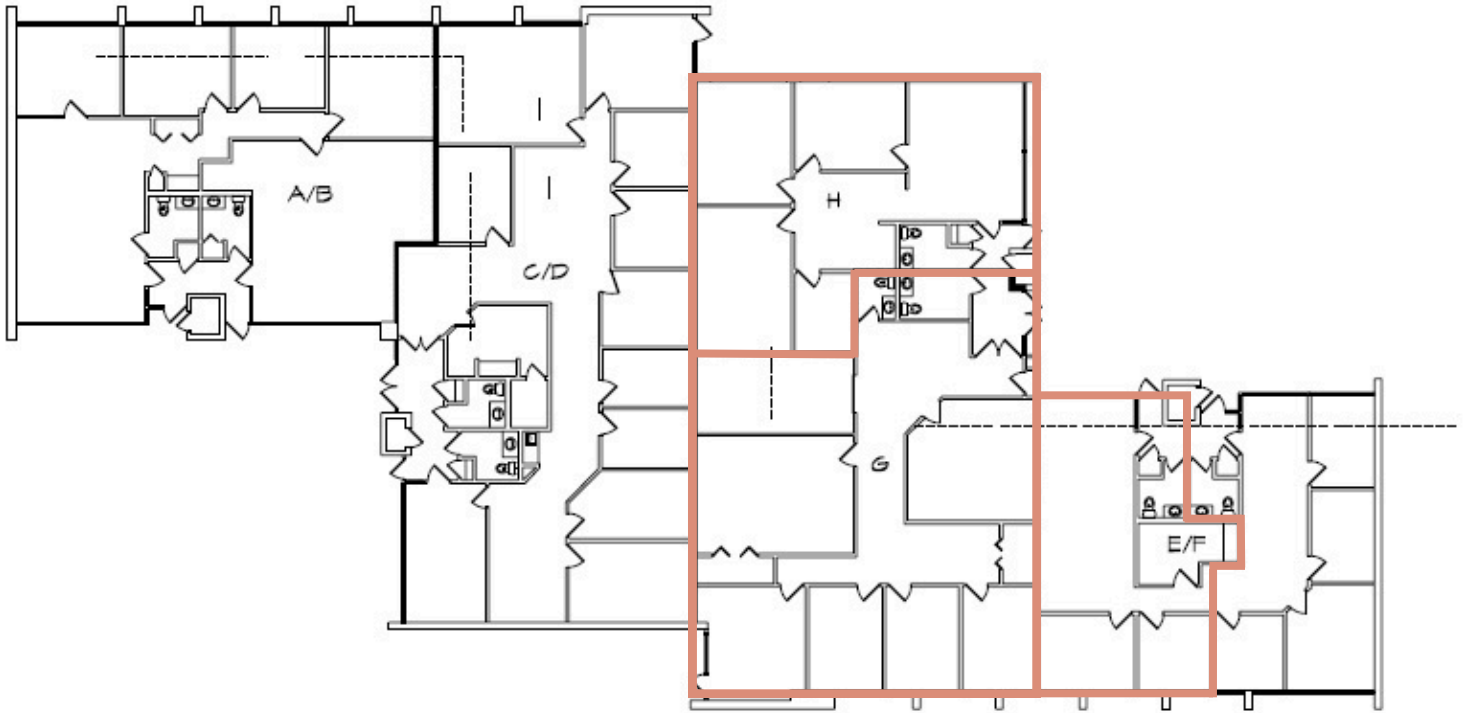


YOUR CHICAGOLAND COMMERCIAL
REAL ESTATE EXPERT, SINCE 1964.

WWW.OWENWAGENER.COM

919 N PLUM GROVE ROAD
SCHAUMBURG, IL 60173

10,590 SF



Available



YOUR CHICAGOLAND COMMERCIAL
REAL ESTATE EXPERT, SINCE 1964.

WWW.OWENWAGENER.COM