

2045-2085 E. WEST MAPLE
COMMERCE TWP., MICHIGAN

OFFICE/HI-TECH FOR LEASE
1,250 Square Feet Available



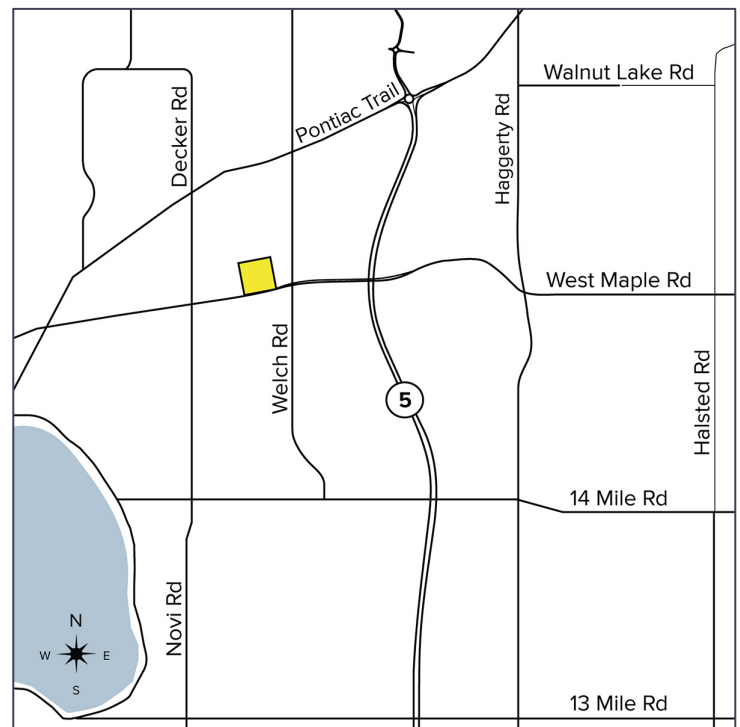
**SIGNATURE
ASSOCIATES**
KNOW SIGNATURE | KNOW RESULTS

COMMERCE PLACE



PROPERTY FEATURES

- 5 building complex:
 - E-507: 1,250 sq. ft. with 3 offices, large receptionist area, lobby, restroom and small warehouse
- 10' clear height
- Ample parking
- Zoned Light Industrial
- Available immediately
- Maple Road west of M-5; Welch Road
- Contact Broker for rental information



For more information, please contact:

JEFF LEMANSKI
(248) 359 0641
jlemanski@signatureassociates.com

SIGNATURE ASSOCIATES
One Towne Square, Suite 1200
Southfield, MI 48076
www.signatureassociates.com

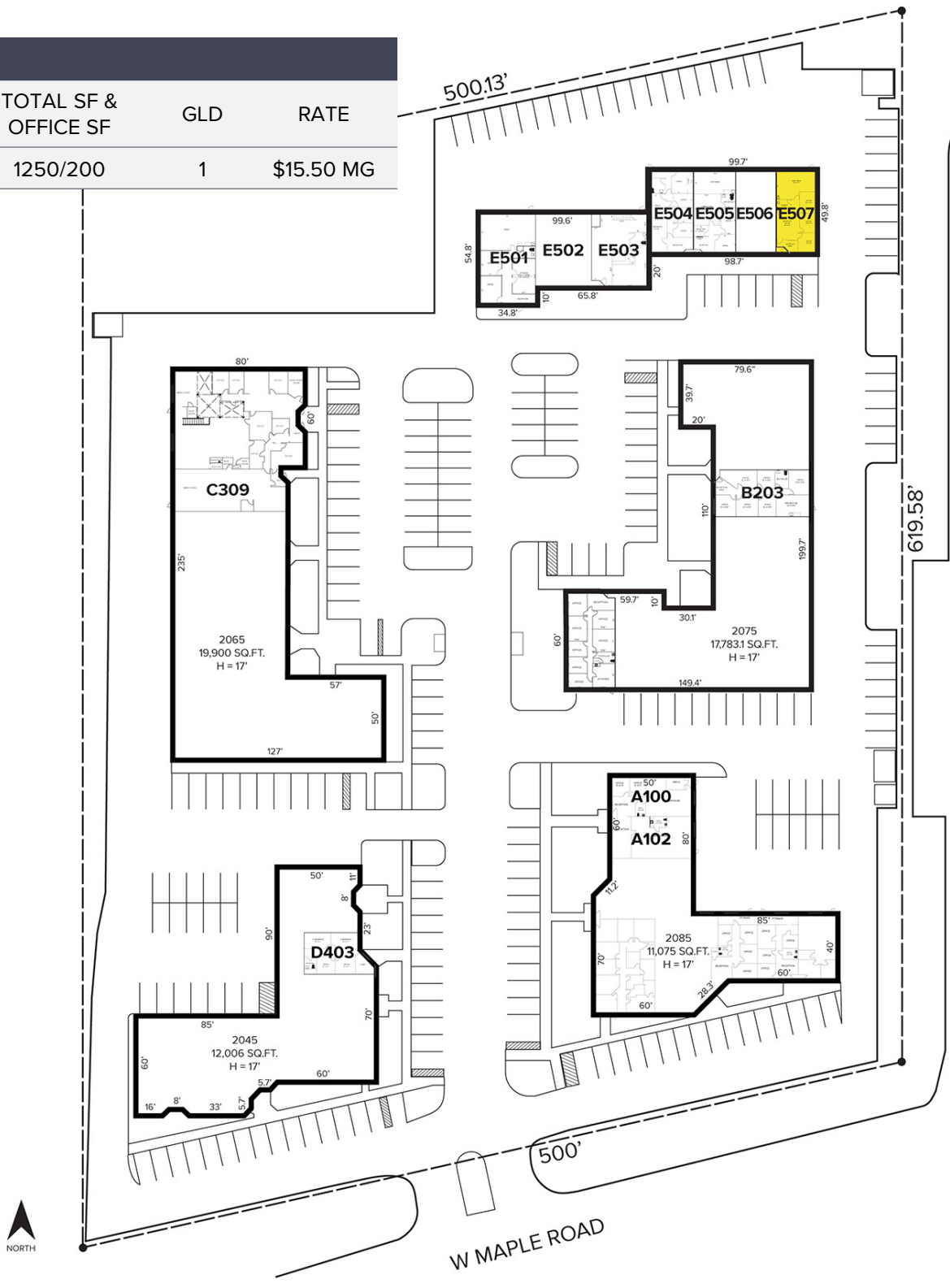
2045-2085 E. West Maple Rd. – Commerce Twp., MI

Office/Hi-Tech For Lease

1,250
Square Feet
AVAILABLE

Site Plan

AVAILABILITY			
ADDRESS	TOTAL SF & OFFICE SF	GLD	RATE
E-507	1250/200	1	\$15.50 MG



For more information, please contact:

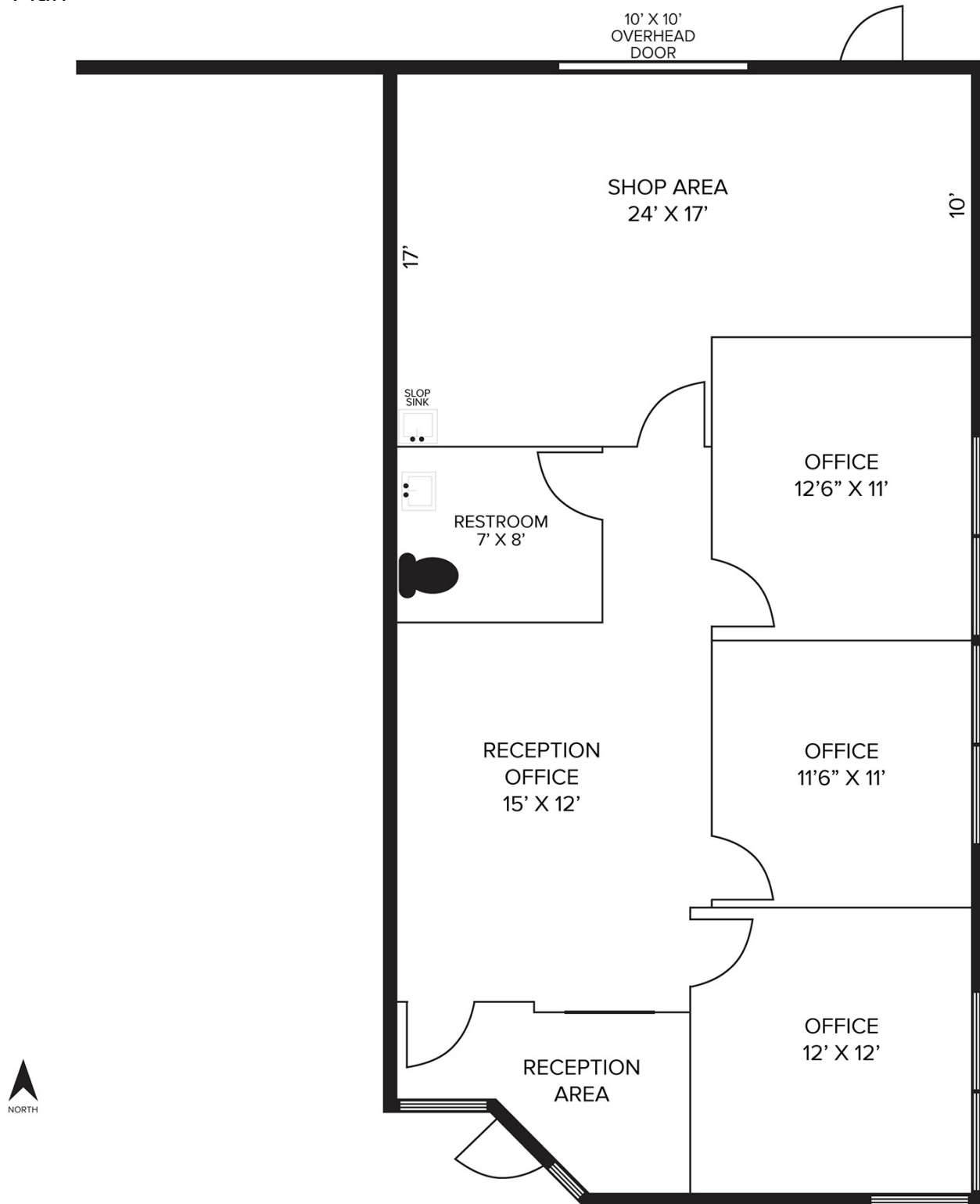
JEFF LEMANSKI
 (248) 359 0641
 jlemanski@signatureassociates.com

SIGNATURE ASSOCIATES
 One Towne Square, Suite 1200
 Southfield, MI 48076
 www.signatureassociates.com

2045-2085 E. West Maple Rd. – Commerce Twp., MI
Office/Hi-Tech For Lease

1,250
Square Feet
AVAILABLE

Floor Plan



For more information, please contact:

JEFF LEMANSKI
(248) 359 0641
jlemanski@signatureassociates.com

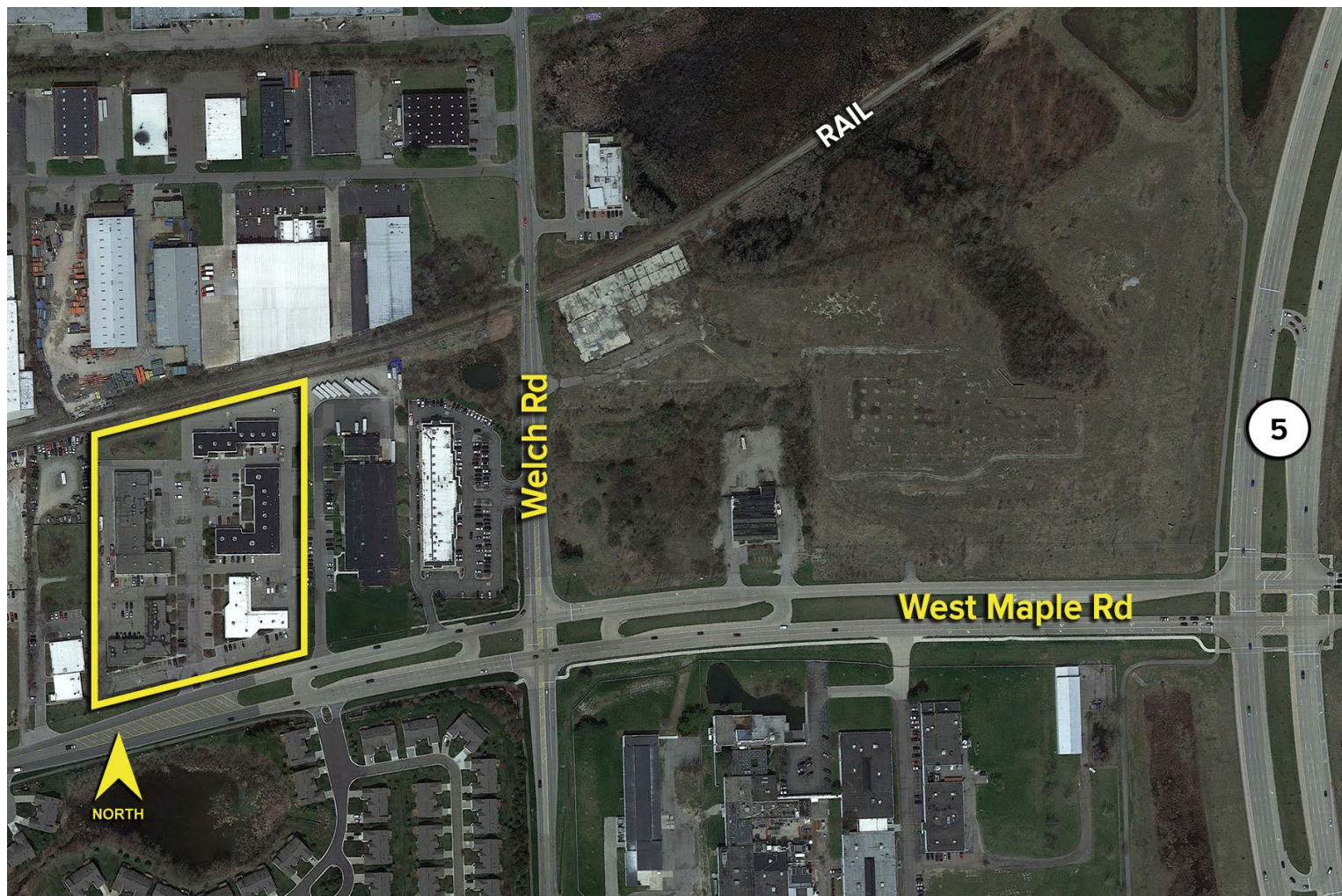
SIGNATURE ASSOCIATES
One Towne Square, Suite 1200
Southfield, MI 48076
www.signatureassociates.com

2045-2085 E. West Maple Rd. – Commerce Twp., MI

Office/Hi-Tech For Lease

1,250
Square Feet
AVAILABLE

Aerial



For more information, please contact:

JEFF LEMANSKI
(248) 359 0641
jlemanski@signatureassociates.com

SIGNATURE ASSOCIATES
One Towne Square, Suite 1200
Southfield, MI 48076
www.signatureassociates.com