



Land for Sale

±19.82 ACRES

3520 US Highway 90 W
Seguin, TX 78155

 Transwestern

About the Property

Prime Commercial Acreage with Interstate Visibility

This ±19.82-acre commercial property in Guadalupe County offers exceptional visibility from both IH-10 and US Hwy 90, making it ideal for high-traffic business exposure. Zoned C-Commercial and featuring an on-site billboard, it presents a prime opportunity for development or investment.

HIGHLIGHTS

- ±19.82 Acres
- High visibility from IH-10 and US HWY 90
- Zoning: C-Commercial
- Guadalupe County
- Billboard on-site



Kelly Ralston

Senior Vice President
(210) 253-2928
kelly.ralston@transwestern.com

Russell T. Noll, CCIM, CPM®

Executive Managing Director
(210) 253-2945
russell.noll@transwestern.com

 Transwestern

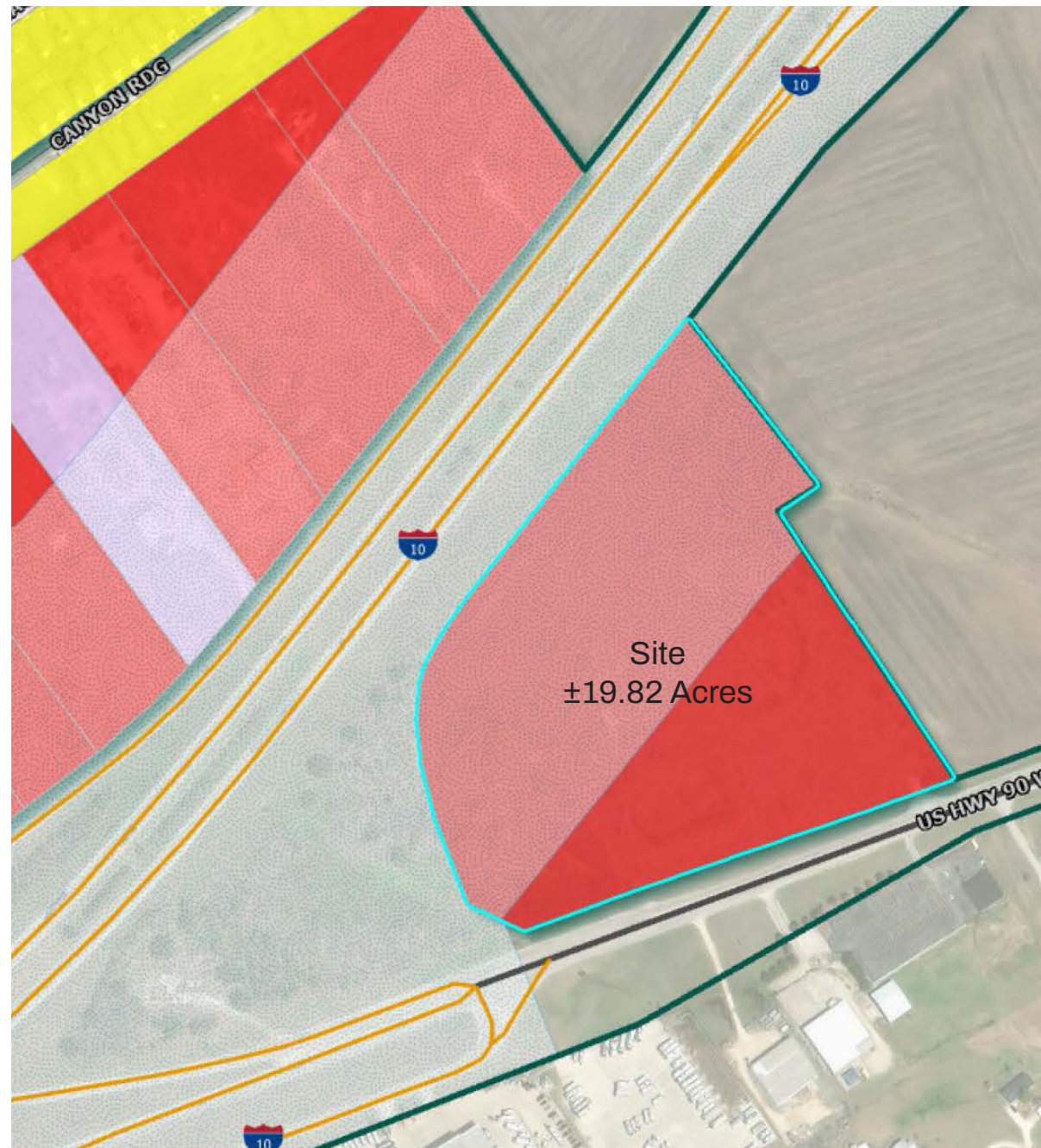
Zoning Map

Zoning Type: Commercial

The Commercial District is the primary commercial and service zoning district of the community. Access should be provided by an arterial street, with the heaviest concentration of this component located at intersections of arterial streets. The district is an intensive classification in which the commingling of many retail, service and office uses is permitted. Structures located in this district may vary from freestanding buildings to community and regional shopping centers.

GENERAL USES

- Retail
- Professional Office
- Community Center
- Parks/ Playgrounds
- Medical Office
- Restaurants
- Day Care
- Auto Repair
- Gas Station
- Drive-thru windows-retail and/or restaurant
- First floor commercial with second story apartment



Kelly Ralston

Senior Vice President
(210) 253-2928
kelly.ralston@transwestern.com

Russell T. Noll, CCIM, CPM®

Executive Managing Director
(210) 253-2945
russell.noll@transwestern.com

Nearby Amenities

1 Blue Compass RV Seguin

2 Caterpillar®

3 Griffith Ford Seguin

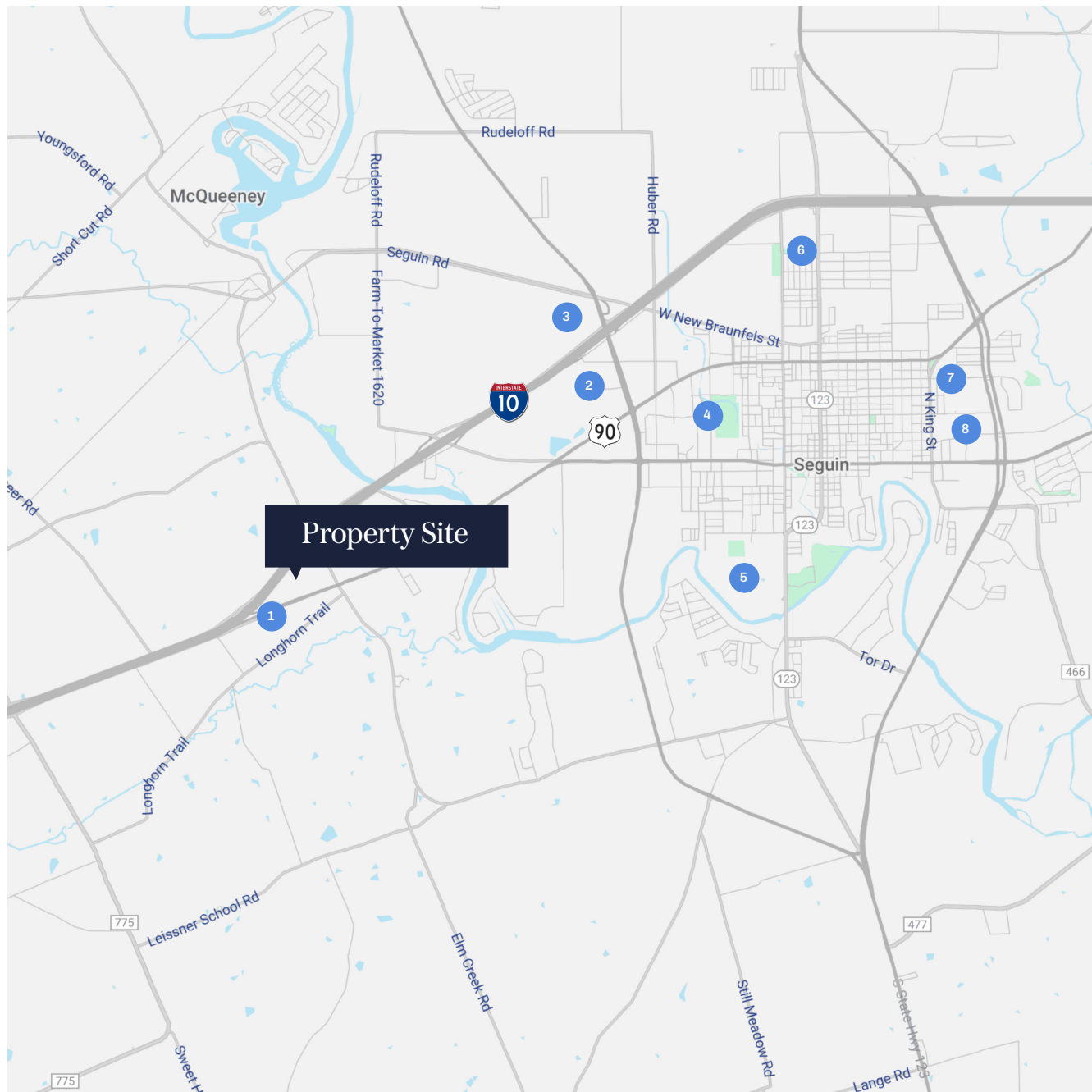
4 Texas Lutheran University

5 City of Seguin Coliseum

6 The Home Depot

7 Seguin High School

8 H-E-B



Kelly Ralston

Senior Vice President
(210) 253-2928
kelly.ralston@transwestern.com

Russell T. Noll, CCIM, CPM®

Executive Managing Director
(210) 253-2945
russell.noll@transwestern.com





Get in Touch

Kelly Ralston

Senior Vice President

(210) 253-2928

kelly.ralston@transwestern.com

Russell T. Noll, CCIM, CPM®

Executive Managing Director

(210) 253-2945

russell.noll@transwestern.com