

Office / Retail | For Lease

# Hoke Crossing

7701-7709 Hoke Road,  
Englewood, OH 45315

2 Spaces at 2,500 SF each



Matt Arnovitz, SIOR, CCIM, CPM

Senior Associate  
937 226 1550  
matt.arnovitz@cbre.com

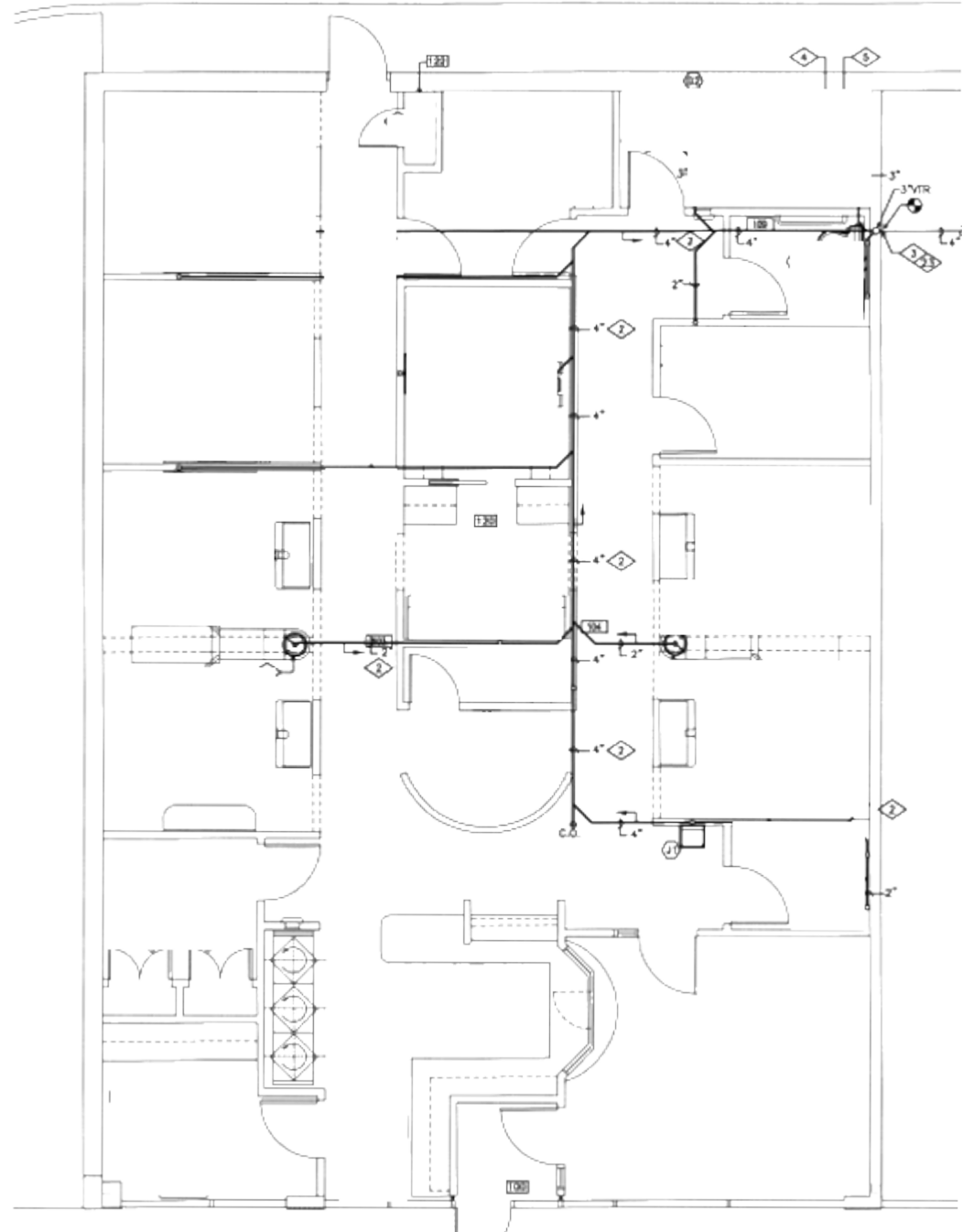
**CBRE**

[www.cbre.us/cincinnati](http://www.cbre.us/cincinnati)

# Space Highlights

SUITE 7701 – 2,500 SF AVAILABLE

- + End Cap Former Dental and Urgent Care space
- + Located @ I-70 & Hoke Road in Hoke Crossing, Home to Anchor Tenant Walmart
- + Great Visibility
- + Branded Sign Plate on Walmart's Pylon Sign Facing I-70
- + Ample Parking
- + Potential drive thru available for 7701



For Lease | Suite 7701 - 2,500 SF Available | Possible drive thru

7701 Hoke Road,  
Englewood, OH 45315



For Lease | Suite 7701 - 2,500 SF Available | Possible drive thru location

7701 Hoke Road,  
Englewood, OH 45315

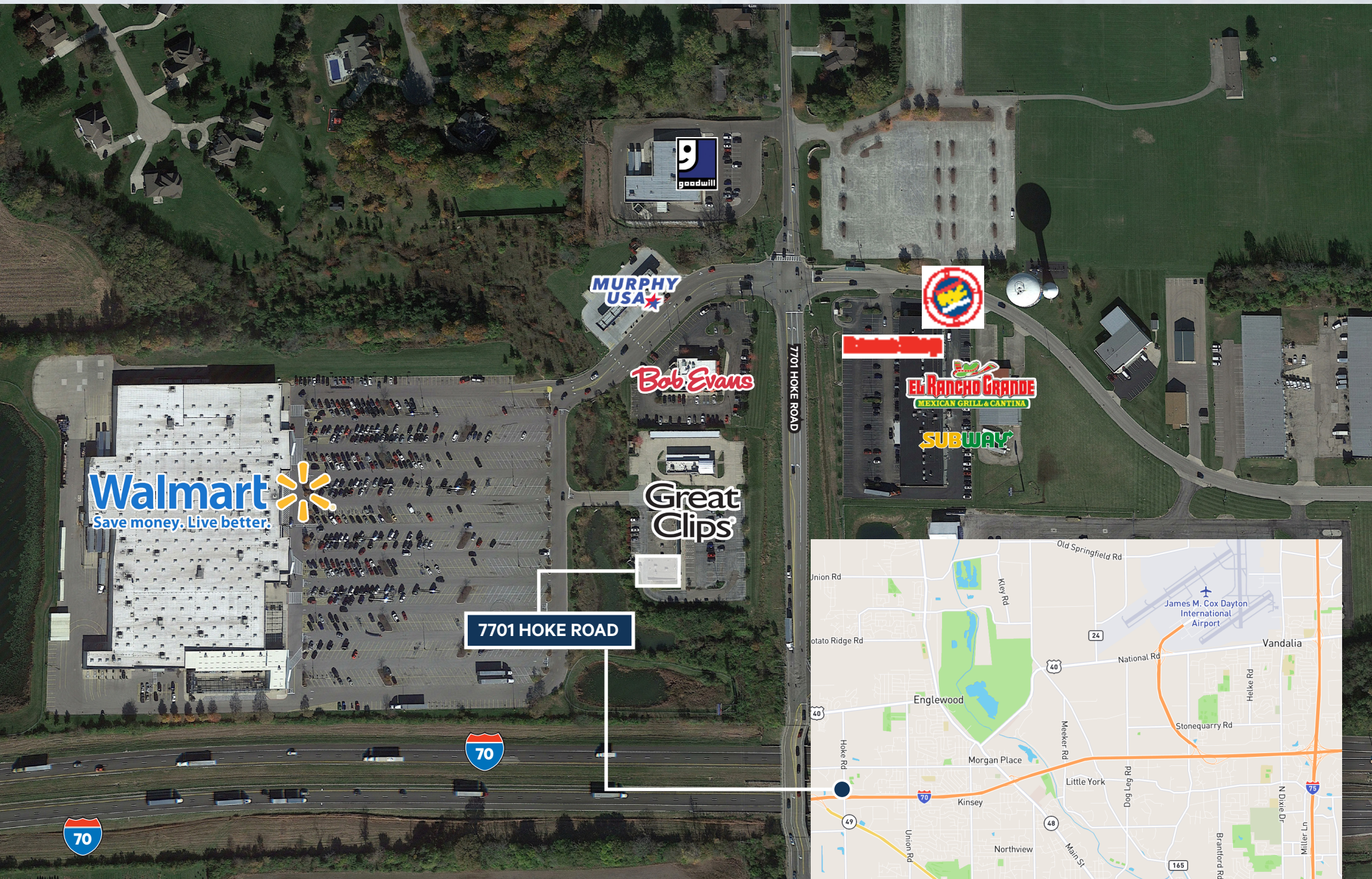


# Interior Space

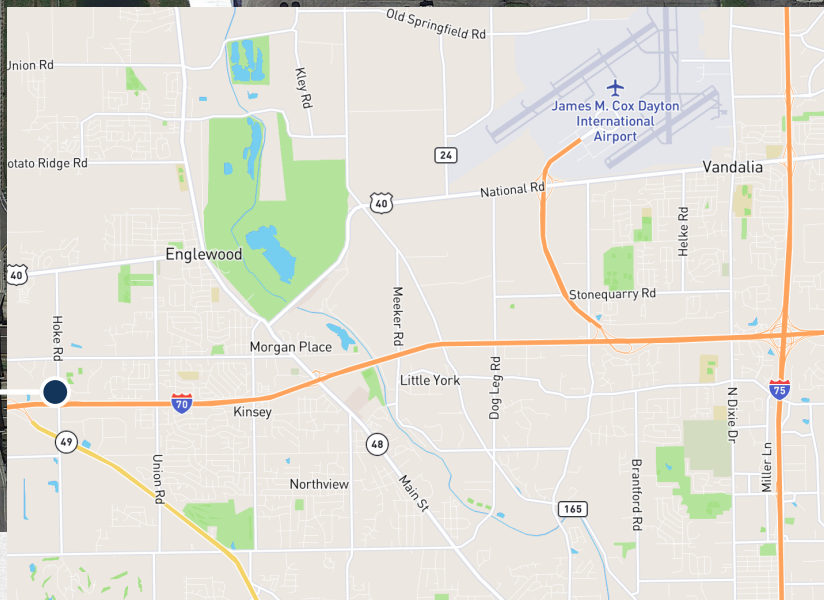
formerly Wellnow



# Aerial Map



7701 HOKE ROAD



# Demographics | Traffic Counts

Population			
2010 Population	1,887	27,748	58,110
2020 Population	1,904	26,831	57,489
2022 Population	1,879	26,674	56,867
2027 Population	1,858	26,515	56,379
2010-2020 Annual Rate	0.09%	-0.34%	-0.11%
2020-2022 Annual Rate	-0.59%	-0.26%	-0.48%
2022-2027 Annual Rate	-0.22%	-0.12%	-0.17%
2022 Male Population	47.2%	48.0%	47.2%
2022 Female Population	52.8%	52.0%	52.8%
2022 Median Age	47.0	44.4	45.0

In the identified area, the current year population is 56,867. In 2020, the Census count in the area was 57,489. The rate of change since 2020 was -0.48% annually. The five-year projection for the population in the area is 56,379 representing a change of -0.17% annually from 2022 to 2027. Currently, the population is 47.2% male and 52.8% female.

### Median Age

The median age in this area is 45.0, compared to U.S. median age of 38.9.

### Race and Ethnicity

2022 White Alone	75.5%	70.5%	61.4%
2022 Black Alone	15.8%	20.8%	30.8%
2022 American Indian/Alaska Native Alone	0.2%	0.2%	0.2%
2022 Asian Alone	2.2%	1.7%	1.2%
2022 Pacific Islander Alone	0.0%	0.0%	0.0%
2022 Other Race	0.9%	0.9%	1.0%
2022 Two or More Races	5.5%	5.9%	5.4%
2022 Hispanic Origin (Any Race)	1.5%	1.9%	2.0%

Persons of Hispanic origin represent 2.0% of the population in the identified area compared to 19.0% of the U.S. population. Persons of Hispanic Origin may be of any race. The Diversity Index, which measures the probability that two people from the same area will be from different race/ethnic groups, is 54.3 in the identified area, compared to 71.6 for the U.S. as a whole.

### Households

2022 Wealth Index	89	83	71
2010 Households	731	11,154	24,041
2020 Households	753	11,079	24,342
2022 Households	745	11,052	24,184
2027 Households	739	11,058	24,100
2010-2020 Annual Rate	0.30%	-0.07%	0.12%
2020-2022 Annual Rate	-0.47%	-0.11%	-0.29%
2022-2027 Annual Rate	-0.16%	0.01%	-0.07%
2022 Average Household Size	2.36	2.38	2.32

The household count in this area has changed from 24,342 in 2020 to 24,184 in the current year; a change of -0.29% annually. The five-year projection of households is 24,100, a change of -0.07% annually from the current year total. Average household size is currently 2.32, compared to 2.33 in the year 2020. The number of families in the current year is 15,445 in the specified area.



- Average Daily Traffic Volume**
- ▲ Up to 6,000 vehicles per day
  - ▲ 6,001 - 15,000
  - ▲ 15,001 - 30,000
  - ▲ 30,001 - 50,000
  - ▲ 50,001 - 100,000
  - ▲ More than 100,000 per day



Source: ©2022 Kallibrate Technologies (Q1 2022).

For Lease | Suite 7701 - 2,500 SF Available

7701 Hoke Road,  
Englewood, OH 45315



For Lease | Suite 7701-7709: 2,500- 5,000 SF Available

7701 Hoke Road,  
Englewood, OH 45315

## Contact us:

Matt Arnovitz, SIOR, CCIM, CPM

Senior Associate

T +1 937 226 1550

Matt.Arnovitz@cbre.com



**CBRE**

© 2023 CBRE, Inc. All rights reserved. This information has been obtained from sources believed reliable but has not been verified for accuracy or completeness. You should conduct a careful, independent investigation of the property and verify all information. Any reliance on this information is solely at your own risk. CBRE and the CBRE logo are service marks of CBRE, Inc. All other marks displayed on this document are the property of their respective owners, and the use of such logos does not imply any affiliation with or endorsement of CBRE. Photos herein are the property of their respective owners. Use of these images without the express written consent of the owner is prohibited.