

# 1929 S CAMPUS AVENUE

ONTARIO  
CALIFORNIA 91761



±24,751 SF High Image Distribution Warehouse

**CBRE**



# Highlights



±24,751 SF High Image Distribution Warehouse with Secured Private Yard



±3,557 SF of Two Story Office with 4 Restrooms and Shower; Offices Fully Networked



22' Minimum Clear in Warehouse with Distributed Electrical



Two (2) Dock High and Two (2) Grade Level Doors



Sprinklers Throughout with Skylights and Foil in Warehouse



400 Amps/277 Volt Power with Additional 240 V Plug



Two (2) 45k lb Mechanical Pit Levelers



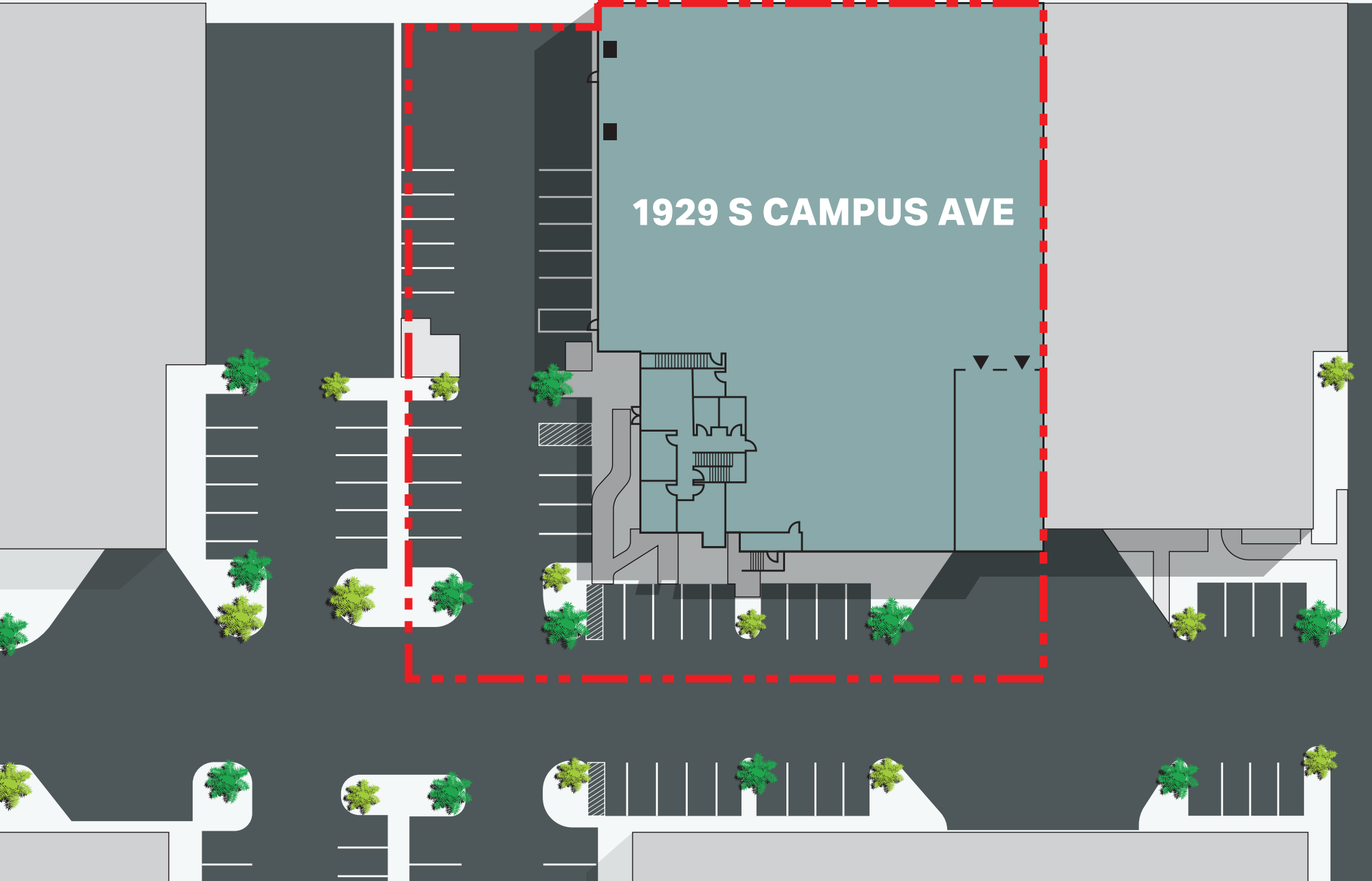
Motorized Yard Gate and Motorized Grade Level Door with Remotes



Located Within Minutes of the 60 Freeway

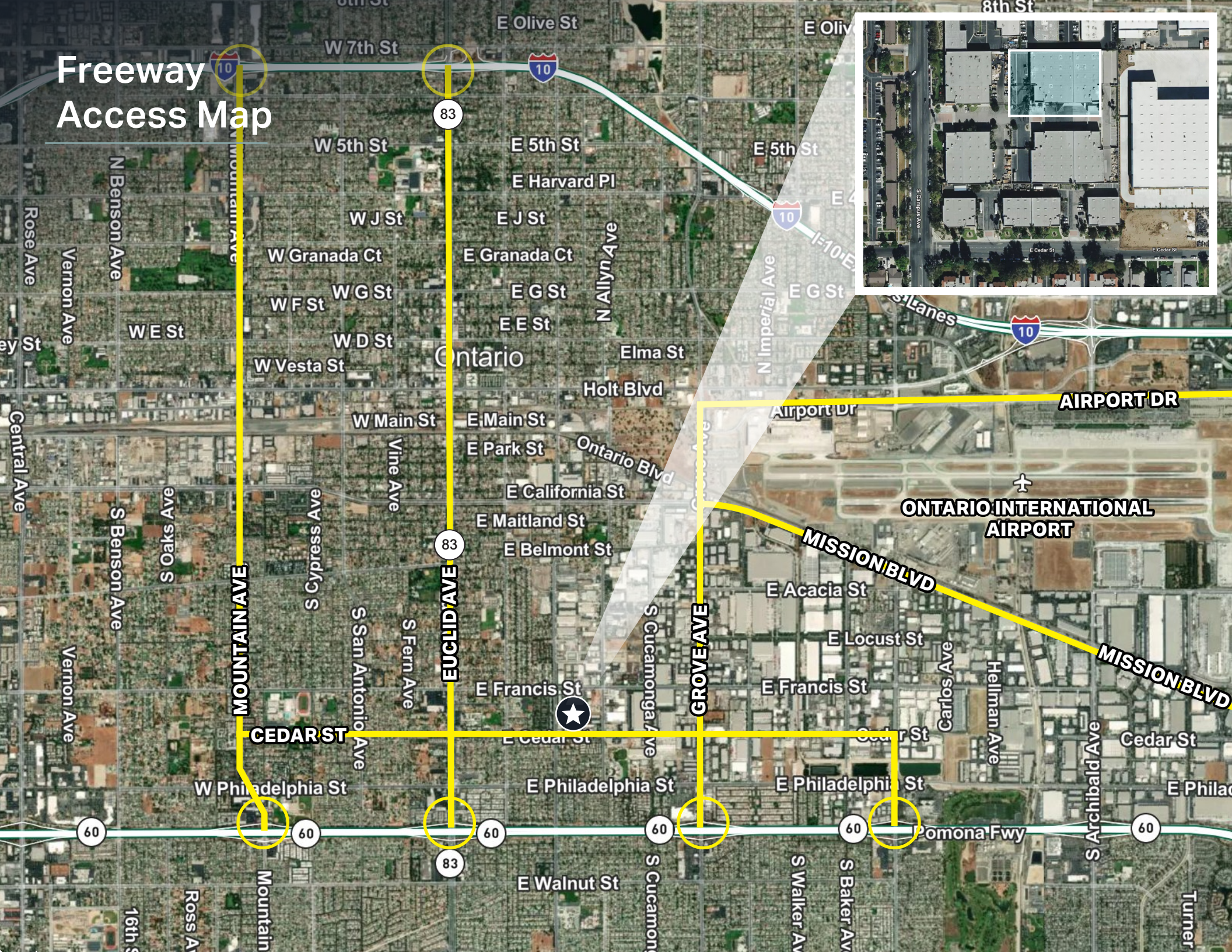


# Site Plan





# Freeway Access Map





# 1929 S CAMPUS AVENUE



## FOR MORE INFORMATION, PLEASE CONTACT:

**RICHARD LEE, SIOR**  
Senior Vice President  
+1 909 418 2010  
Lic. 01757870  
[richard.lee@cbre.com](mailto:richard.lee@cbre.com)

**NICHOLAS CHANG, CCIM, SIOR**  
Senior Vice President  
+1 909 418 2014  
Lic. 01344844  
[nicholas.chang@cbre.com](mailto:nicholas.chang@cbre.com)

**JUSTIN KUEHN**  
First Vice President  
+1 909 418 2013  
Lic. 01966182  
[justin.kuehn@cbre.com](mailto:justin.kuehn@cbre.com)

**SIONE FUA**  
Vice President  
+1 909 418 2007  
Lic. 02006432  
[sione.fua@cbre.com](mailto:sione.fua@cbre.com)

**NICOLE BARRERA**  
Associate  
+1 909 418 2018  
Lic. 02220253  
[nicole.barrera@cbre.com](mailto:nicole.barrera@cbre.com)

**CBRE**

© 2025 CBRE, Inc. All rights reserved. This information has been obtained from sources believed reliable but has not been verified for accuracy or completeness. You should conduct a careful, independent investigation of the property and verify all information. Any reliance on this information is solely at your own risk. CBRE and the CBRE logo are service marks of CBRE, Inc. All other marks displayed on this document are the property of their respective owners, and the use of such logos does not imply any affiliation with or endorsement of CBRE. Photos herein are the property of their respective owners. Use of these images without the express written consent of the owner is prohibited.