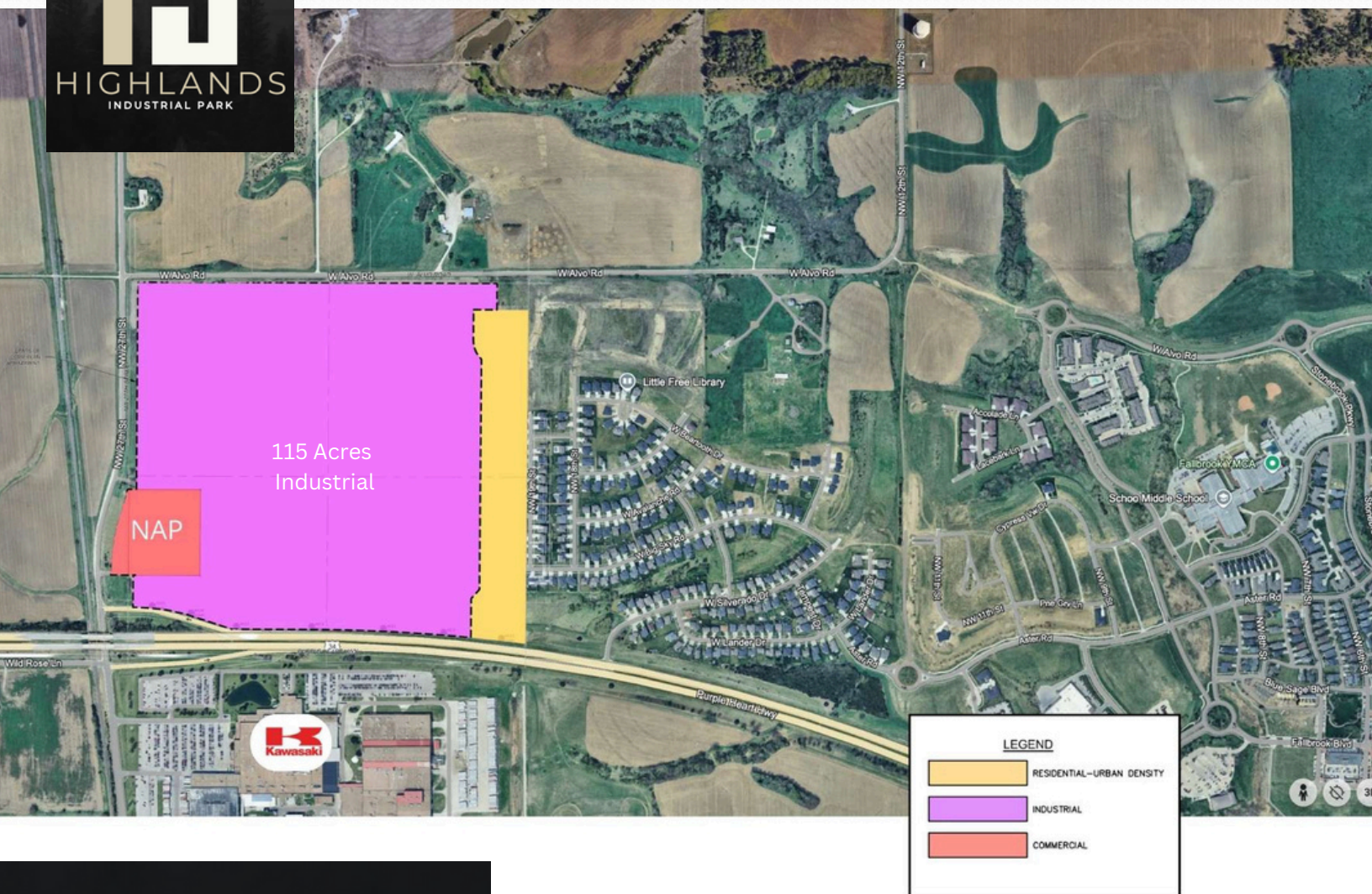




OVERVIEW

Explore an outstanding development opportunity in NW Lincoln! Located at the northeast corner of NW 27th and Hwy 34, directly across from Kawasaki, this prime 131-acre site offers immense potential.

The project includes approximately 115 acres of industrial land available for sale, complemented by a 15-acre residential buffer. Take advantage of this strategic and versatile development site—positioned for success in an ideal location!



PROPERTY DETAILS

Location:	NW 27th and Hwy 34 (directly across from Kawasaki). Lincoln, NE
Size:	131 acre site
Use:	Industrial, Commercial and Residential (see map)
Asking Price:	Developed pad sites will range between \$5.50/S.F. - \$8.50/S.F. *Depending on size and location of parcel. AS-IS \$82,500/AC or \$10,807,500.

*Developer will layout a building on a site for serious buyers.



SITE LOCATION



INDUSTRIAL PARK

Highland Industrial Park offers exceptional connectivity. Positioned just off Interstate 80, Interstate 180, and Highway 77, this industrial hub provides quick and convenient access for logistics and transportation needs. The proximity interstate connections support smooth distribution routes across the region and beyond.

DISCLAIMER

Information in this brochure is subject to change without notice based on availability. Lots can be combined to create a larger property. Agent has equity.

Zach White

402-817-8600

zwhite@whitedevco.com



WHITE
DEVELOPMENT CO.





**Parcels can be combined or subdivided.*

Zach White

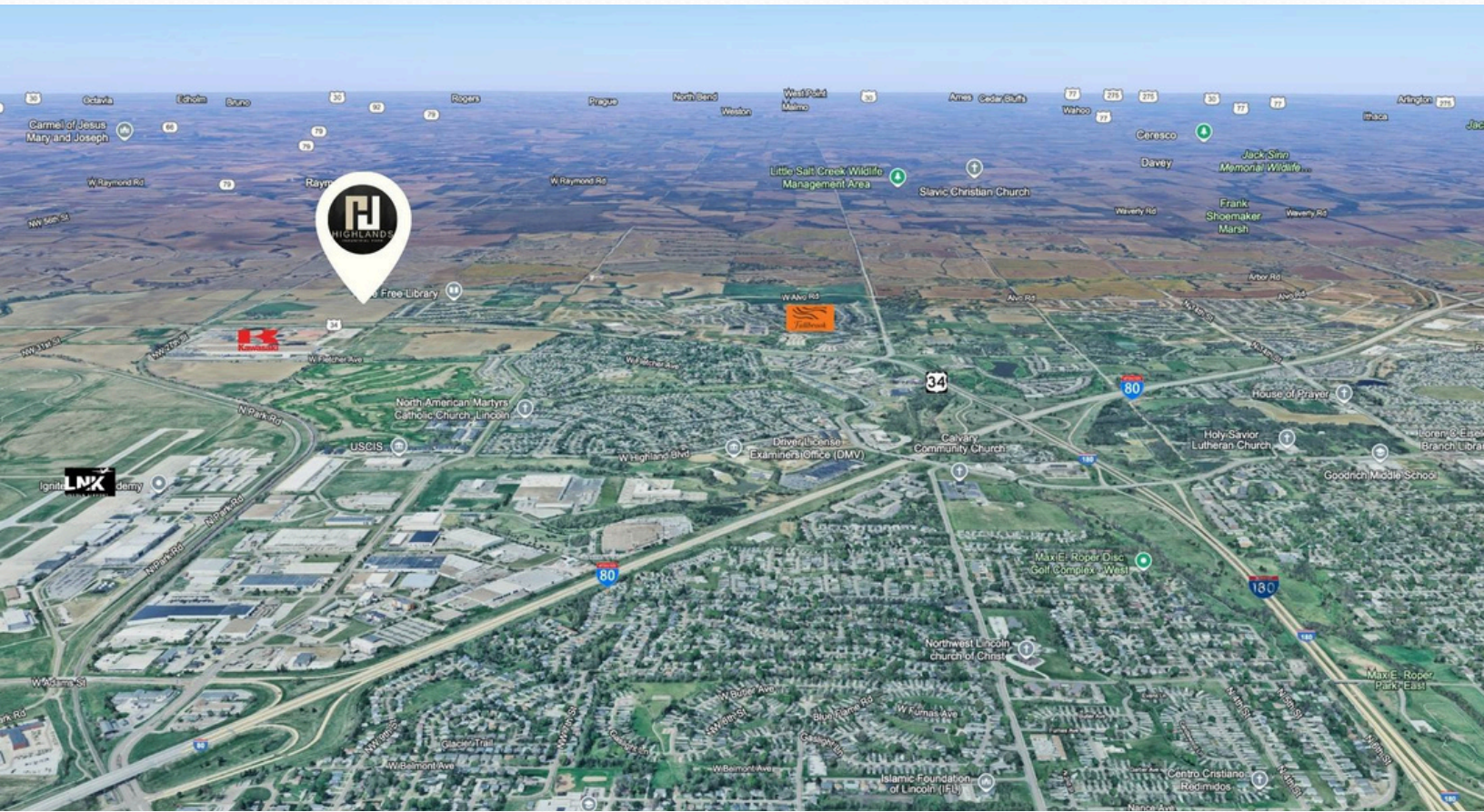
☎ 402-817-8600

✉ zwhite@whitedevco.com



WHITE
DEVELOPMENT CO.





CONNECTIVITY

Railroads:	(UPRR) Union Pacific Railroad, (BNSF) BNSF Railway, (AM) Amtrax
Highways:	I-80 , I-180, US-77 / US -34
Airport:	Lincoln Airport (LNK)



ABOUT US

White Development Company specializes in commercial and residential real estate services, including acquisitions and joint ventures. Our expertise lies in residential and commercial land development, as well as commercial property development. With a proven track record, we have a strong reputation for completing significant projects and collaborating with investors and landowners to deliver exceptional mixed-use developments.

