



FOR LEASE

## RESTAURANT AVAILABLE FOR LEASE

7402 W 159TH STREET, ORLAND PARK, IL

---

FREESTANDING SIGNAGE ON 159TH STREET

ACROSS FROM THE HOME DEPOT, ALDI, WENDY'S AND MORE

EXISTING 3,476 SF BUILDING

LOCATED ALONG 159TH STREET WITH APPROXIMATELY 35,000 VPD



# AERIAL

7402 W 159TH STREET, ORLAND PARK, IL



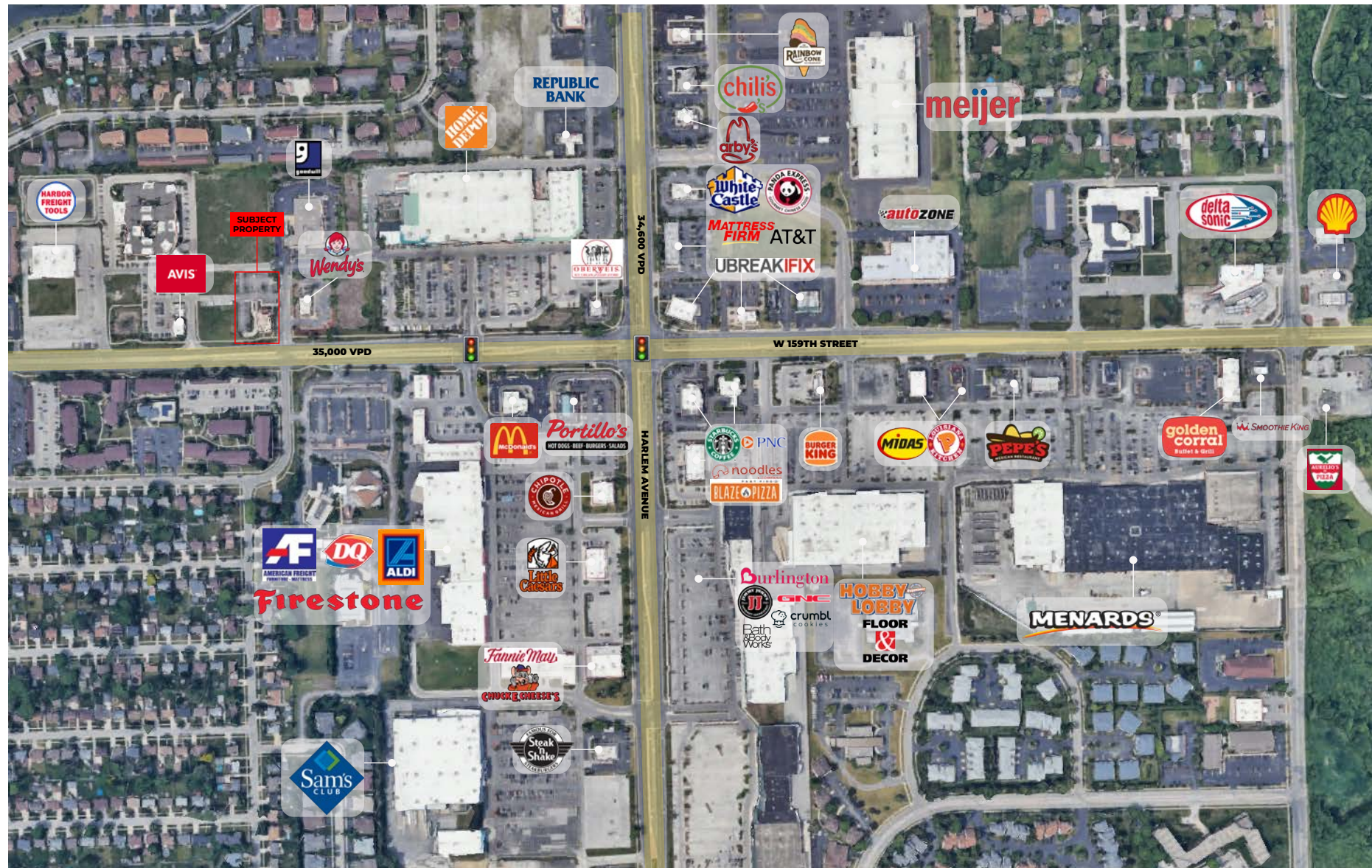
## PROPERTY CHARACTERISTICS

- + MAJOR RETAIL CORRIDOR WITH 2 MILLION SF OF RETAIL WITHIN 1 MILE: HOME DEPOT, ALDI'S, SAMS CLUB, MCDONALD'S, WENDY'S AND MORE
- + STRATEGICALLY LOCATED ON 159TH STREET WITH 35,000 CARS PER DAY
- + FREESTANDING MONUMENT SIGN
- + HIGH AVERAGE INCOME OVER \$103,000 WITHIN 1-MILE



# AERIAL - DISTANCED

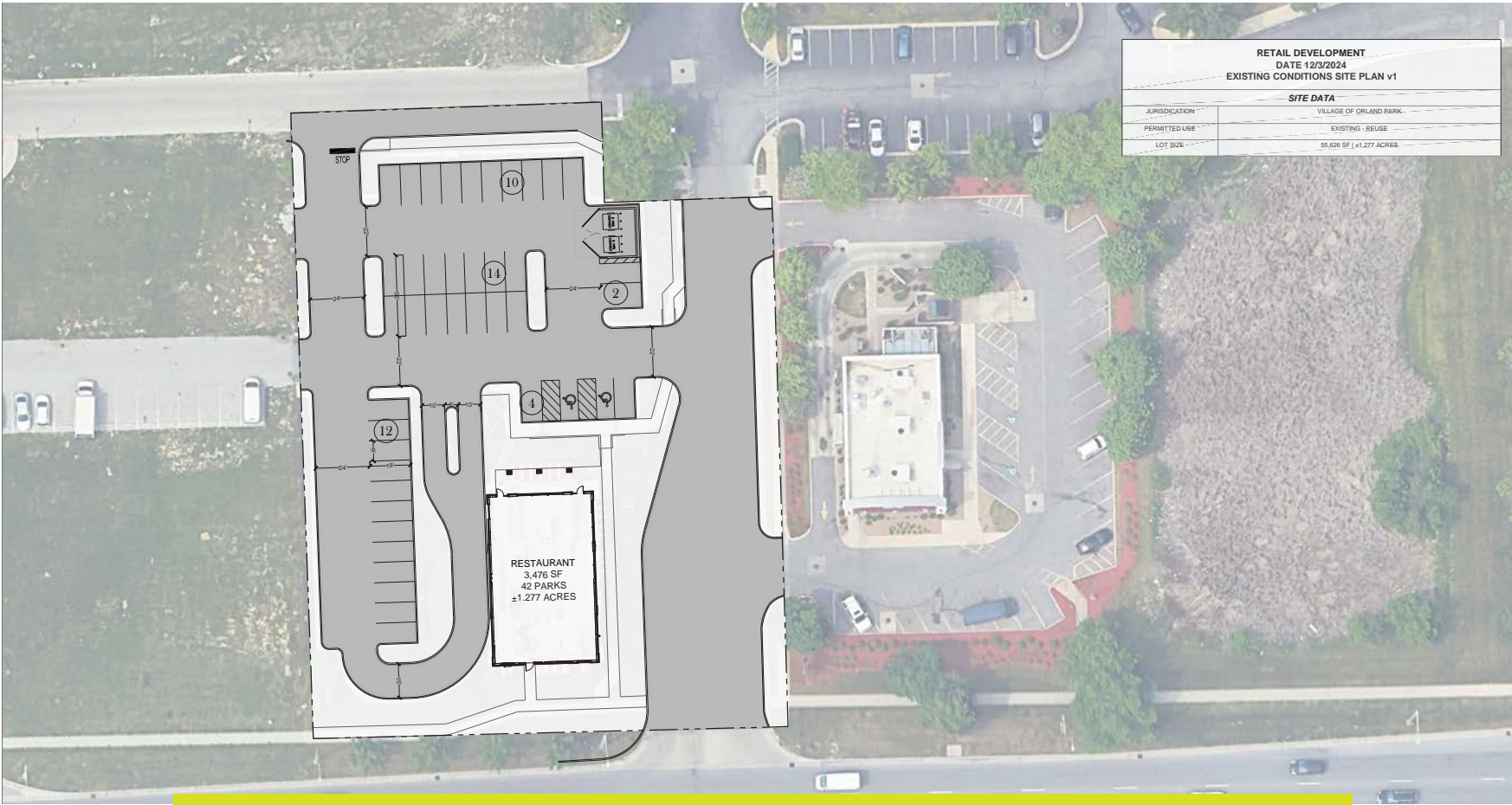
7402 W 159TH STREET, ORLAND PARK, IL





# SITE PLAN

7402 W 159TH STREET, ORLAND PARK, IL



## AREA DEMOGRAPHICS

	1-MILE	3-MILES	5-MILES
ESTIMATED POPULATION	12,797	85,619	182,707
ESTIMATED HOUSEHOLDS	5,508	33,959	70,278
DAYTIME POPULATION	4,585	23,924	73,241
AVERAGE HH INCOME	\$103,037	\$116,156	\$116,884

MORE INFORMATION?

[www.vequity.com](http://www.vequity.com)

---

ANDREW COHEN

847.894.3713

[a.cohen@vequity.com](mailto:a.cohen@vequity.com)