



BACK BAY | BOSTON, MASSACHUSETTS

305 NEWBURY STREET

1,013 SF AVAILABLE FOR LEASE

 **Atlantic**
URBAN | RETAIL™

BACK BAY is the main retail and dining area in Boston. It is home to over 450 shops, 200 restaurants, and over 6,000 rooms in over 20 hotels. It is the second largest office market in Boston with over 16M SF of space. Over 50 million people visit the Back Bay each year and spend \$5M per day.



AVAILABILITY

1,013 SF For Lease

SITE FACTS

- Walk-Up space at the corner of Newbury & Hereford Streets
- Small shop space adjacent to Back Bay's Abercrombie & Fitch flagship store
- Located in the heart of Boston's main retail corridor with neighboring retailers including:

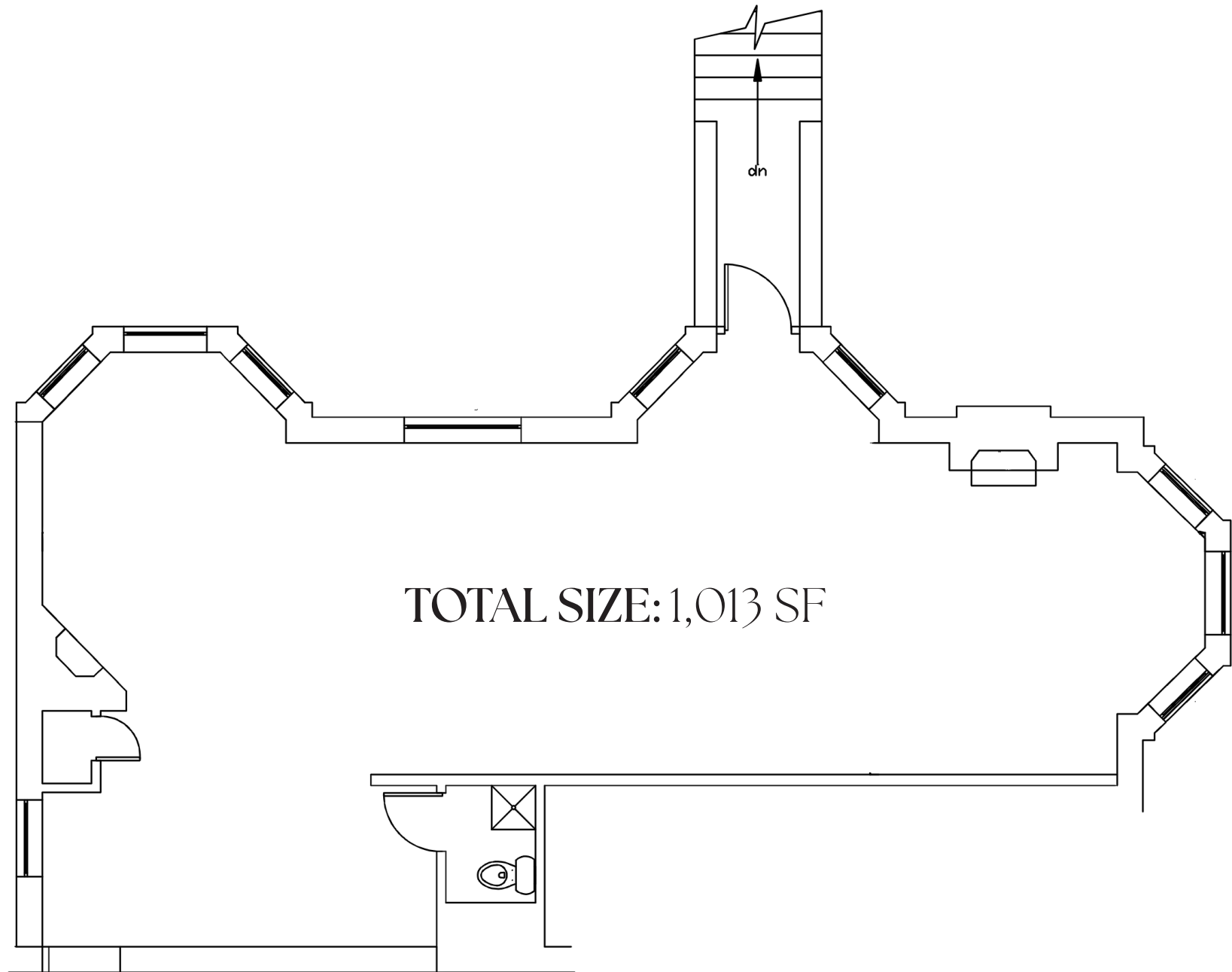


- Half a block from the MBTA Hynes T Station and a 5 minute walk to the Prudential Center
- Available now

DEMOGRAPHICS

	0.25 MILES	0.5 MILES	1 MILE
 TOTAL POPULATION	8,146	26,646	93,262
 DAYTIME POPULATION	20,807	47,923	164,940
 TOTAL HOUSEHOLDS	4,212	14,081	39,042
 MEDIAN HH INCOME	\$132,838	\$81,259	\$80,315







BACK BAY | BOSTON, MA





305 NEWBURY STREET

BACK BAY | BOSTON, MASSACHUSETTS

ERIC SUFFOLETTO

508.272.0585 | ESUFFOLETTO@ATLANTICRETAIL.COM

LINDSEY SANDELL

617.369.5936 | LSANDELL@ATLANTICRETAIL.COM

SOPHIE MORRILL

617.369.5926 | SMORRILL@ATLANTICRETAIL.COM

BOSTON

THE PRUDENTIAL CENTER
BOSTON, MA 02199
617.239.3600

ALBANY

ATLANTA

CHARLOTTE

LOS ANGELES

NEW YORK CITY

ORLANDO

PITTSBURGH

WEST PALM BEACH

WWW.ATLANTICRETAIL.COM

[LINKEDIN.COM/COMPANY/ATLANTIC-RETAIL-PROPERTIES](https://www.linkedin.com/company/atlantic-retail-properties)

[INSTAGRAM.COM/ATLANTIC_RETAIL/](https://www.instagram.com/atlantic_retail/)

REALTY
RESOURCES

CHAINLINKS
RETAIL ADVISORS

© ATLANTIC RETAIL 2025 The information above has been obtained from sources believed reliable. While we do not doubt its accuracy, we have not verified it and make no guarantee, warranty or representation about it.

