



WAYNE PLAZA



Wayne Plaza

101,940 SF Office Building
Value meets vision

962 Wayne Avenue, Silver Spring, Maryland



Wayne Plaza, located in the heart of Silver Spring, embodies the spirit of the surrounding neighborhood. With modern renovations that includes a conference center, tenant lounge, games, and free wifi, this office building is truly a place to enjoy your workday.

BUILDING OVERVIEW
VALUE. FLEXIBILITY. LOCATION.



Move in ready spec suites ranging from 1,000 – 18,000 SF



Walk to Sarbanes Transit Center (Metro Red Line & Purple Line)



Walk Score® 100 – Walker’s Paradise



Transit Score® 88 – Excellent



Nearby parking at Wayne Avenue Garage – 1,690 spaces



Energy Star



Renovated lobby, elevators, and common areas



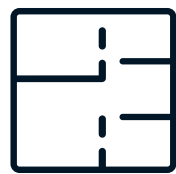
Tech enabled shared conference center with 30+ seats



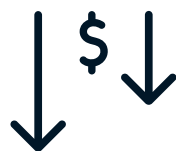
Tenant lounge with catering kitchen



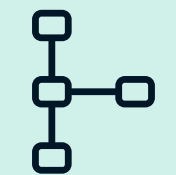
YOUR VISION REALIZED



Flexible floor plans and square footage options ranging from 1,000–18,000 SF



Aggressive below-market rates

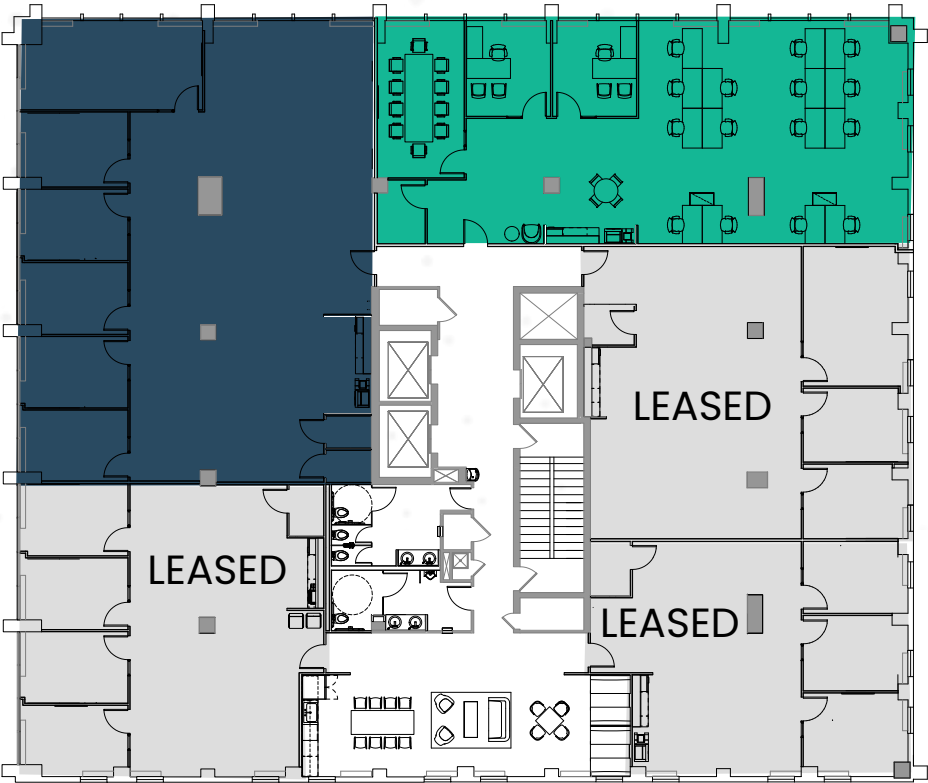


Creative deal structures to meet your needs



Rapid decision-making for quick occupancy

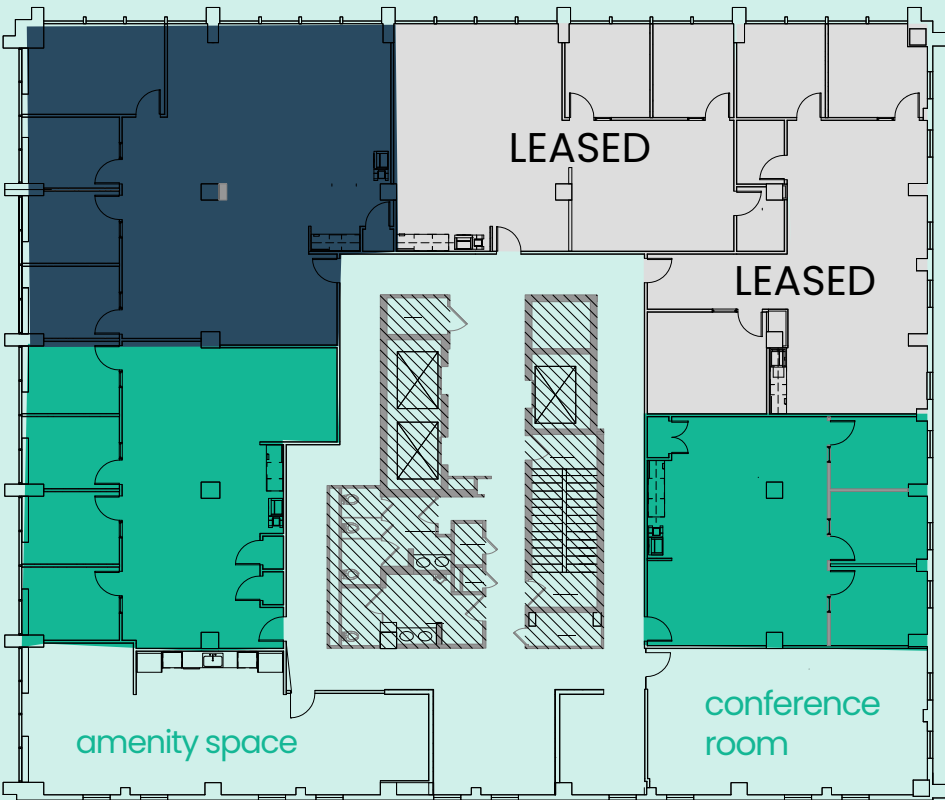
SUITE 220
3,346 SF
[Virtual Tour](#)



SUITE 230
2,817 SF
Fully Furnished
[Virtual Tour](#)

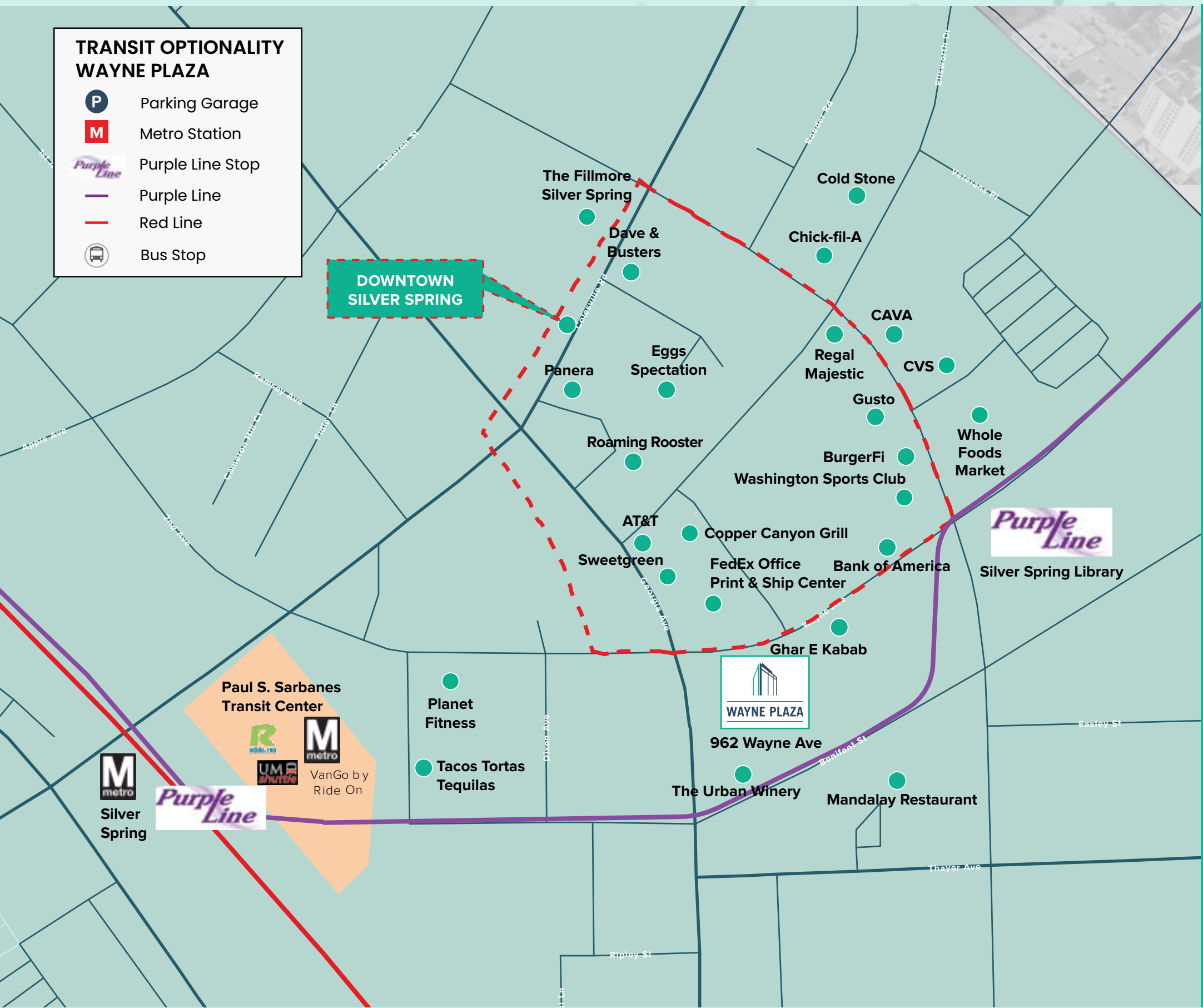
SUITE 520
2,329 SF
[Virtual Tour](#)

SUITE 510
1,963 SF
[Virtual Tour](#)



SUITE 550
1,308 SF

AMENITY-RICH NEIGHBORHOOD



DOWNTOWN SILVER SPRING AMENITIES

APPAREL, BEAUTY & ACCESSORIES

- H&M
- LOFT
- Men's Wearhouse
- Nike Unite
- Ulta
- Uniqlo

ENTERTAINMENT

- Regal Majestic Stadium 20

SERVICES

- Ace Hardware
- Armed Forces Recruiting Station—Level 2
- AT&T
- Bank of America
- Beauty Door Salon & Spa—Level 2
- Courtyard by Marriott
- CVS
- European Wax Center
- FedEx Office
- Gold's Gym
- GoodVets
- Maryland Youth Ballet
- Massage Envy
- MyEyeDr.
- Silver Spring Smiles—Level 2
- Ultra Nail Bar

DINING /SPECIALTY/FOODS

- BIBIBOP Asian Grill
- BurgerFi
- CAVA
- Chick-fil-A
- Chido's Tex-Mex Grill
- Cold Stone Creamery
- Copper Canyon Grill
- Dog Haus Biergarten
- Fantasticks Gelato
- Fuddruckers—Coming Soon
- Kusshi
- LEBTAV
- Locavino
- Masa Hibachi—Level 2
- Matchbox
- Miss Toya's Creole House
- Nando's Peri-Peri
- Panera Bread
- Potbelly Sandwich Shop
- Roaming Rooster
- Sweetgreen
- Thai at Silver Spring
- Whole Foods Market



WAYNE PLAZA

962 Wayne Avenue,
Silver Spring,
Maryland



DANNY SHERIDAN
Managing Director
danny.sheridan@jll.com
301-287-9922

JG CAHILL
Senior Vice President
jg.cahill@jll.com
301-287-3245

Patrick Hall
Vice President
patrick.hall@jll.com
301-830-1338



Although information has been obtained from sources deemed reliable, neither Owner nor JLL makes any guarantees, warranties or representations, express or implied, as to the completeness or accuracy as to the information contained herein. Any projections, opinions, assumptions or estimates used are for example only. There may be differences between projected and actual results, and those differences may be material. The Property may be withdrawn without notice. Neither Owner nor JLL accepts any liability for any loss or damage suffered by any party resulting from reliance on this information. If the recipient of this information has signed a confidentiality agreement regarding this matter, this information is subject to the terms of that agreement. ©2025 Jones Lang LaSalle IP, Inc. All rights reserved.