



Keegan & Coppin
COMPANY, INC.

FOR LEASE

25-35-45-55 MITCHELL BLVD.
SAN RAFAEL, CA

Best Office Location
in Central Marin



REPRESENTED BY:

VESA BECAM, PARTNER
LIC # 01459190 (415) 461-1010, EXT 114
VESA@KEEGANCOPPIN.COM

JOHN MOHUN, AGENT
LIC # 02232254 (415) 461-1010, EXT 126
JMOHUN@KEEGANCOPPIN.COM



OFFICE SPACE FOR LEASE



25-35-45-55 MITCHELL BLVD.
SAN RAFAEL, CA

**BEST OFFICE LOCATION
IN CENTRAL MARIN**

PROPERTY INFORMATION

HIGHLIGHTS

- Excellent location
- Abundant parking
- Easy access to local amenities
- Medical uses permitted
- Shared conference room facilities

OFFICE SPACE

25 Mitchell, Suite 2: 1,370+/- sq ft

25 Mitchell, Suite 9: 885+/- sq ft

45 Mitchell, Suite 16: 1,355+/- sq ft

45 Mitchell, Suite 18B: 412+/- sq ft

55 Mitchell, Suite 22: 588+/- sq ft

DESCRIPTION

4 private offices, open area, reception, private bathroom and kitchenette.

Large open office with courtyard views. Kitchenette.

Mostly open floor plan, kitchenette, one private office.

Pleasant corner office with a small reception area and a private office.

Open area and two private offices.

WAREHOUSE SPACE

55 Mitchell, Suite 23: 4,225+/- sq ft

DESCRIPTION

1,807 sf office and 2,418 sf warehouse. The warehouse is currently built out with a clean room. The office area has a private restroom, kitchen, break area, four private offices, and a storage area.

Open warehouse.

Warehouse space, 1/2 with easily accessible mezzanine. Can be combined with suite 23.

LEASE TERMS

Size range

412 - 4,225+/- sq ft

Rate

\$1.95 per sq ft

Terms

Gross

Parking

4:1000

Zoning

LI/O

Keegan & Coppin Co., Inc.
101 Larkspur Landing Circle, Ste. 112
Larkspur, CA 94939
www.keegancoppin.com
(415) 461-1010

The above information, while not guaranteed, has been secured from sources we believe to be reliable. Submitted subject to error, change or withdrawal. An interested party should verify the status of the property and the information herein.

REPRESENTED BY:

VESA BECAM, PARTNER
LIC # 01459190 (415) 461-1010, EXT 114
VESA@KEEGANCOPPIN.COM

JOHN MOHUN, AGENT
LIC # 02232254 (415) 461-1010, EXT 126
JMOHUN@KEEGANCOPPIN.COM



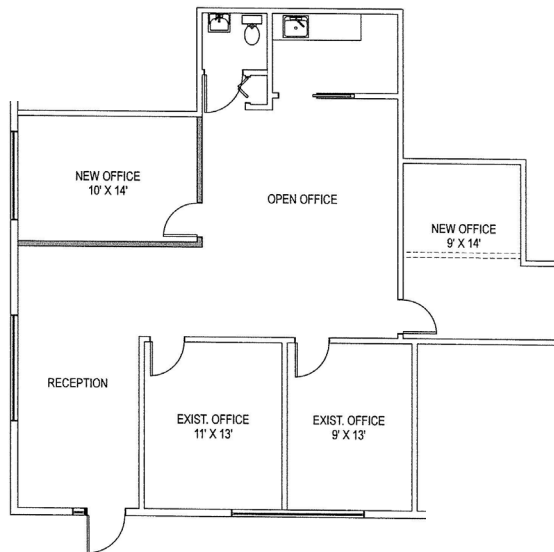
FLOOR PLANS



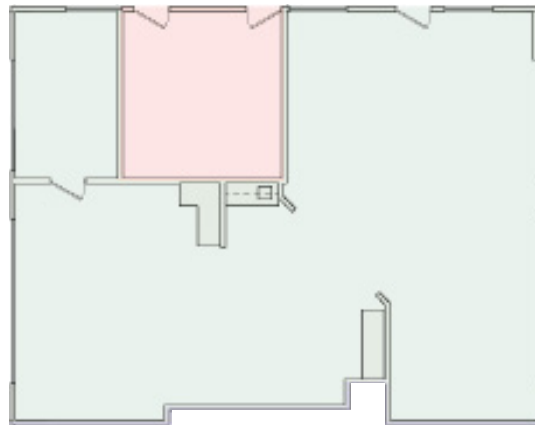
25-35-45-55 MITCHELL BLVD.
SAN RAFAEL, CA

**BEST OFFICE LOCATION
IN CENTRAL MARIN**

25 MITCHELL, SUITE 2
1,370+/- RSF



45 MITCHELL, SUITE 16
1,355+/- RSF



45 MITCHELL, SUITE 18B
412+/- RSF



REPRESENTED BY:

VESA BECAM, PARTNER
KEEGAN & COPPIN CO., INC.
LIC # 01459190 (415) 461-1010, EXT 114
VESA@KEEGANCOPPIN.COM

JOHN MOHUN, AGENT
KEEGAN & COPPIN CO., INC.
LIC # 02232254 (415) 461-1010, EXT 126
JMOHUN@KEEGANCOPPIN.COM



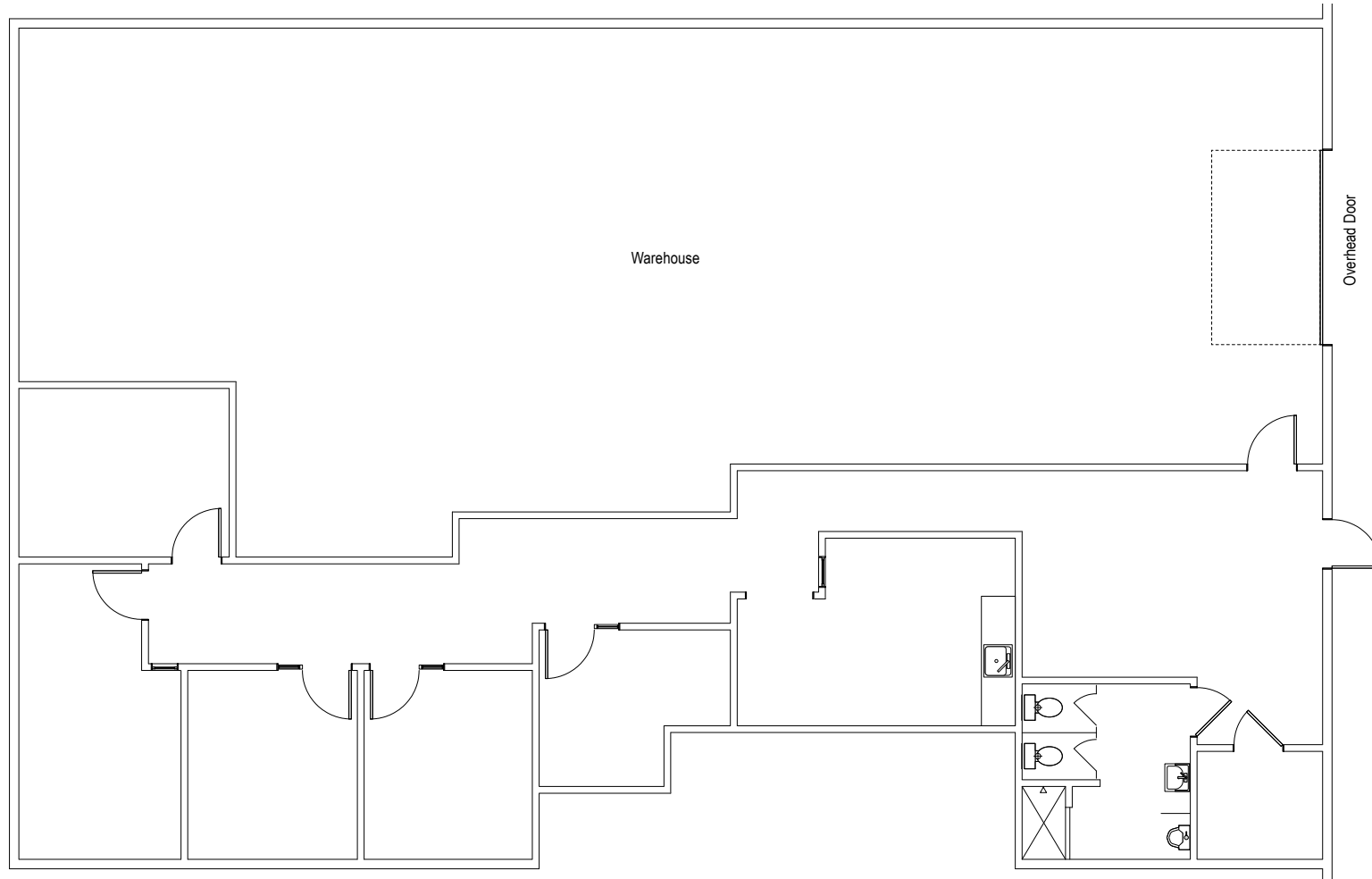
FLOOR PLANS



25-35-45-55 MITCHELL BLVD.
SAN RAFAEL, CA

**BEST OFFICE LOCATION
IN CENTRAL MARIN**

55 MITCHELL, SUITE 23
4,225+/- RSF



REPRESENTED BY:

VESA BECAM, PARTNER
KEEGAN & COPPIN CO., INC.
LIC # 01459190 (415) 461-1010, EXT 114
VESA@KEEGANCOPPIN.COM

JOHN MOHUN, AGENT
KEEGAN & COPPIN CO., INC.
LIC # 02232254 (415) 461-1010, EXT 126
JMOHUN@KEEGANCOPPIN.COM