

# Tierrasanta Gateway Plaza

6050 Santo Road, San Diego, CA 92124

FOR LEASE

± 1,793 SF Professional Office Suite



VIDEO TOUR

  
**PACIFIC COAST  
COMMERCIAL**  
SALES - MANAGEMENT - LEASING

**MICHAEL SIKORSKI**

Sales & Leasing Associate  
(619) 960-1352  
MichaelS@PacificCoastCommercial.com  
Lic. 02204470

**NICK MANE**

Director - Sales & Leasing  
(760) 840-7140  
Nick@PacificCoastCommercial.com  
Lic. 01939391

**JASMINE GOLIA**

Sales & Leasing Associate  
(858) 337-7311  
Jasmine@PacificCoastCommercial.com  
Lic. 02131001

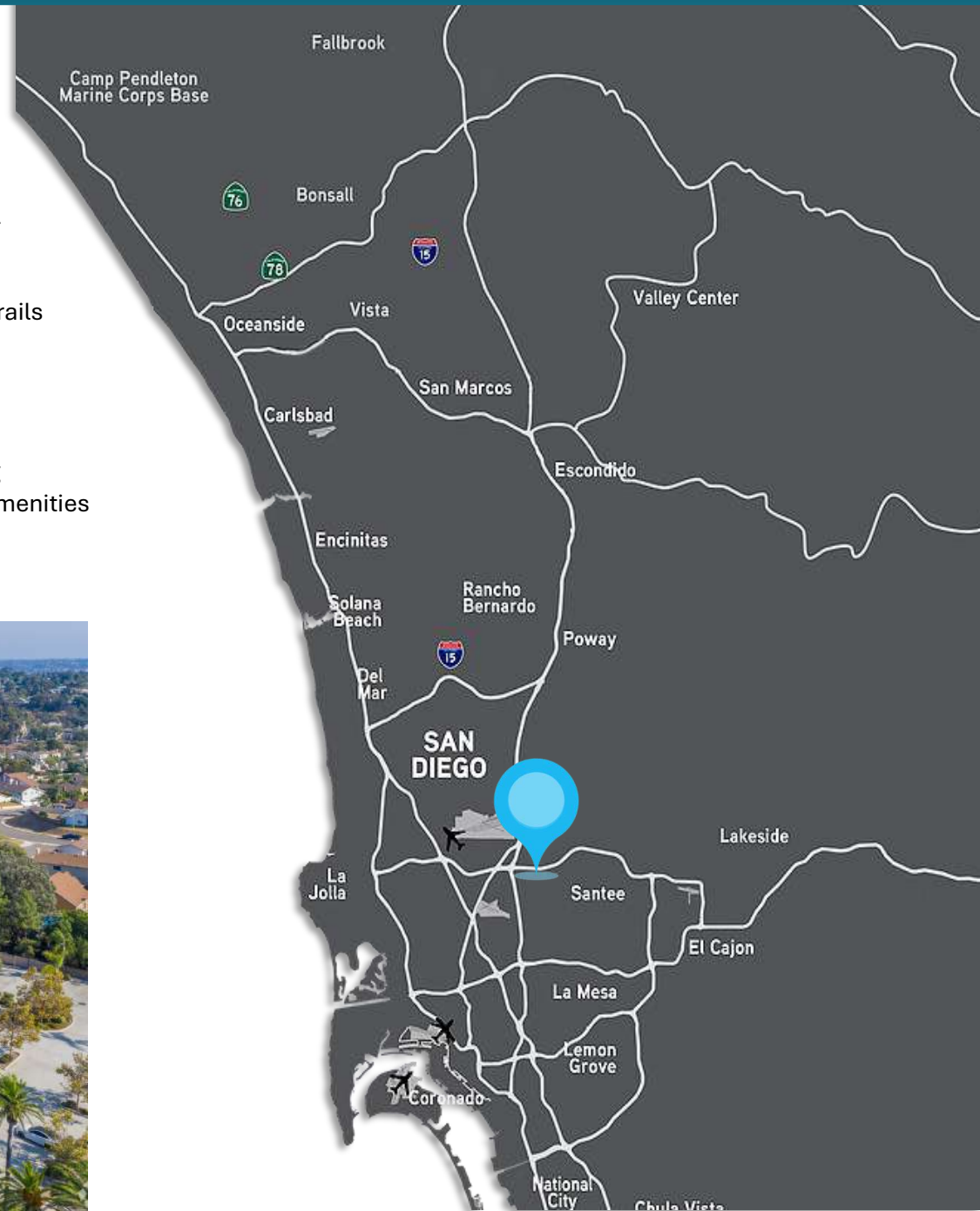
OFFICE 619 469 3600 | 10721 Treena St, Suite 200 | San Diego, CA 92131 | www.PacificCoastCommercial.com | Lic. 01209930

# PROPERTY FEATURES

PROPERTY	6050 Santo Road, San Diego, CA 92124
AVAILABILITY	Suite 150: ± 1,793 RSF Office Suite
PARKING	Abundant Parking - 4/1,000 SF
AMENITIES	High Image Marble Floor Lobby, Shower & Locker Facilities, Extensive Glass-Line Views, Elevator
LANDSCAPING	Lush Landscaping with Nearby Jogging & Biking Trails
ACCESSIBILITY	Immediate Freeway Access to I-15 and Hwy 52 with Excellent Visibility, and Easy Access to Hwy 163 and I-805
LOCATION	Ideal Central San Diego Location. Within Walking Distance to a Variety of Restaurants and Retail Amenities
LEASE RATE	\$2.35/SF + Electric (Janitorial Included)

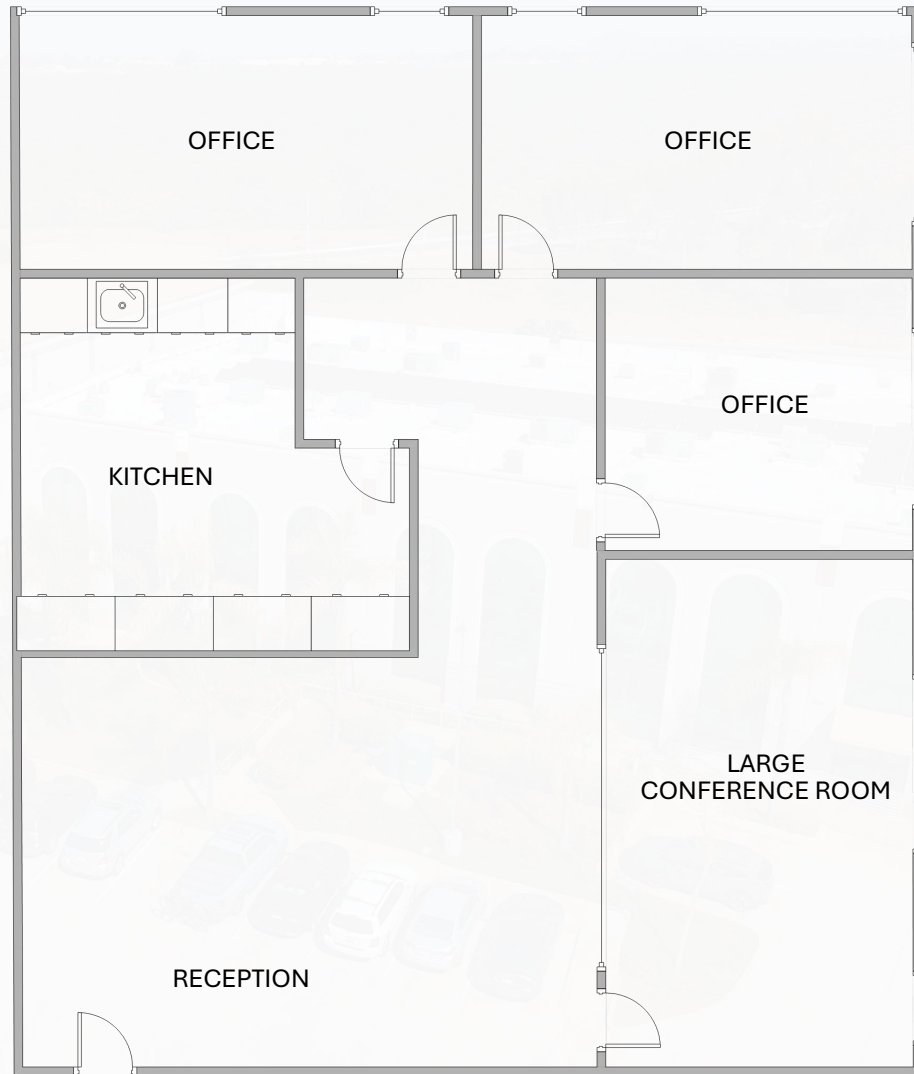


6050 Santo Road



**SUITE 150**  
±1,793 RSF

- Office / Reception Area
- 4 Private Offices
- Kitchen
- Lease Rate: \$2.35/SF + Electric
- Janitorial Included
- Availability - Contact Agent



VIDEOTOUR

Floor Plan is not to scale, for reference purposes only.

# AVAILABLE FOR LEASE

Tierrasanta Gateway Plaza  
Professional Office Suite  
Ideal Central San Diego Location

## contact information

### **MICHAEL SIKORSKI**

Sales & Leasing Associate  
MichaelS@PacificCoastCommercial.com  
Lic. 02204470

### **NICK MANE**

Director - Sales & Leasing  
Nick@PacificCoastCommercial.com  
Lic. 01939391

### **JASMINE GOLIA**

Sales & Leasing Associate  
Jasmine@PacificCoastCommercial.com  
Lic. 02131001

### **PACIFIC COAST COMMERCIAL**

**Tel (619) 469-3600**

10721 Trenea Street, Suite 200  
San Diego, CA 92131

[www.PacificCoastCommercial.com](http://www.PacificCoastCommercial.com)  
Lic. 01209930

The information in this brochure is provided for general marketing purposes only and is believed to be reliable but not guaranteed. Interested parties should verify all details independently, including zoning, measurements, and property condition. The property owner and agents make no warranties or representations and reserve the right to change or withdraw the property or terms at any time without notice. This is not an offer or contract.



6050 SANTO ROAD, SAN DIEGO, CA 92124