



## 3655 Calvert St NW

Washington, District Of Columbia 20007

### Property Highlights

- Approx. 9,309 SF
- Very well-maintained space
- Located in the Glover Park Neighborhood
- Close proximity to Metrorail, Roslyn and Arlington, VA
- Ample on-site parking
- \$23.30 PSF PER YEAR

### Property Overview

9,309 SF Specialty | Church Property For Lease. Great for sanctuary, daycare or educational uses.



### Offering Summary

|                       |                |
|-----------------------|----------------|
| <b>Lease Rate:</b>    | \$23.30 PSF/YR |
| <b>Building Size:</b> | 9,309 SF       |

### For More Information

#### Terry Rogers

O: 301 526 2584  
trogers@naimichael.com

#### Edward Lockett

O: 301 918 2918  
elockett@naimichael.com







Conference Room



Office Space



Office Space

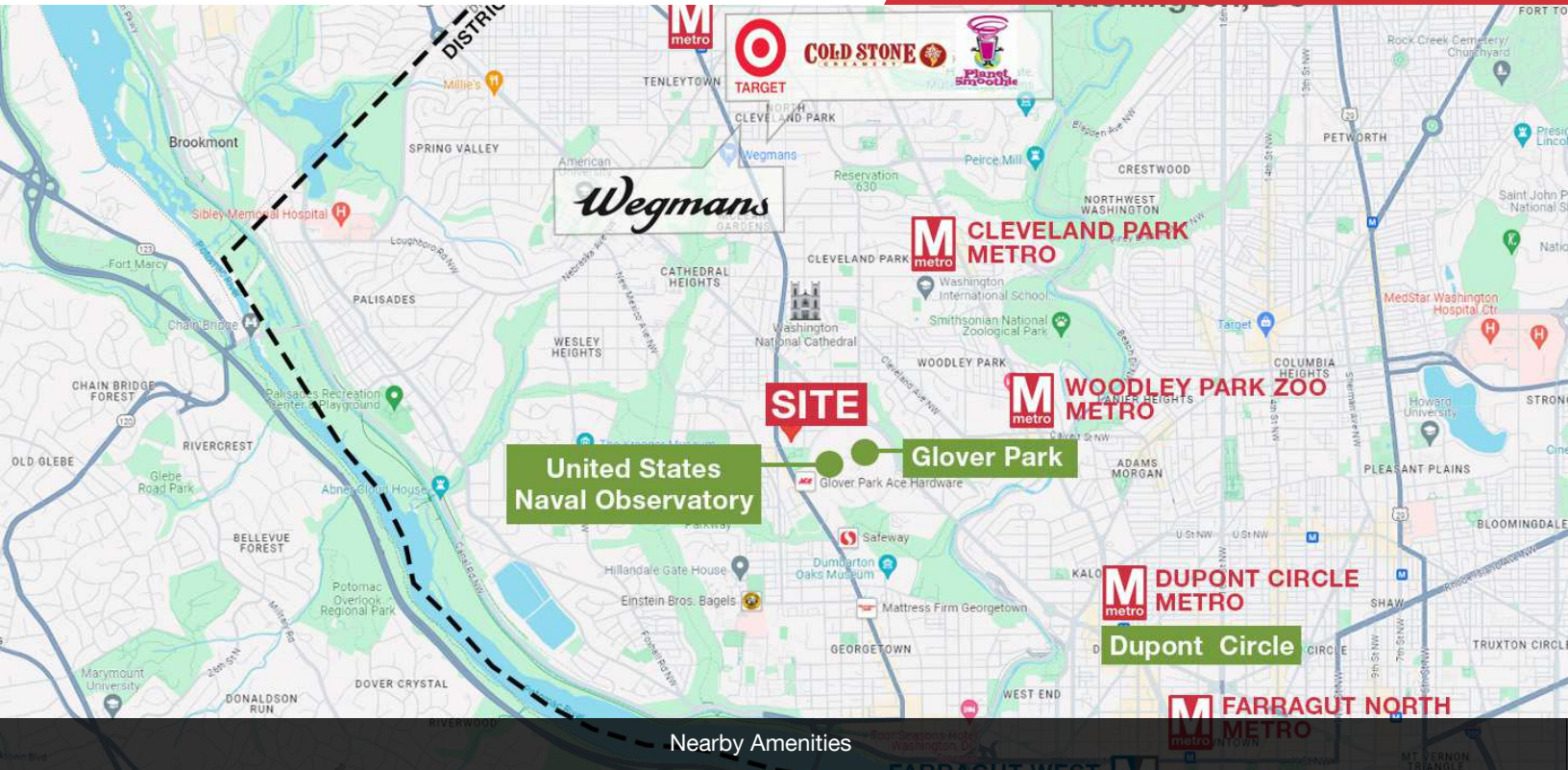


Office Space 2 and 3

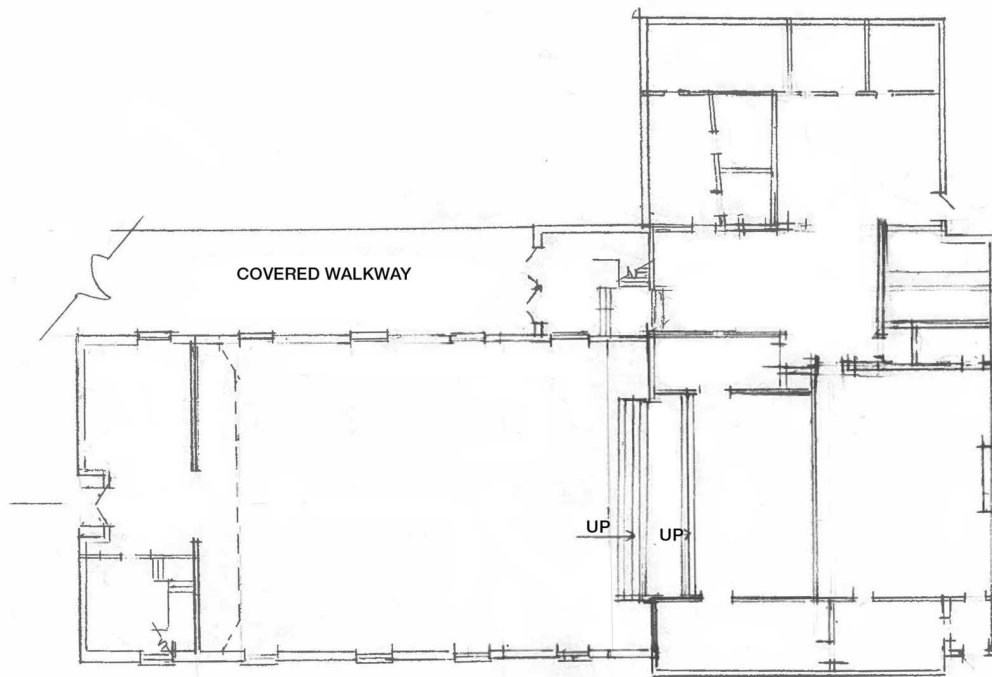








Nearby Amenities



DRAWING NOT TO SCALE

Floor Plan - Not To Scale