

7635 Bishop Road For Lease

7635 Bishop Rd,
Fairburn GA 30213

5-10 Acres For Lease



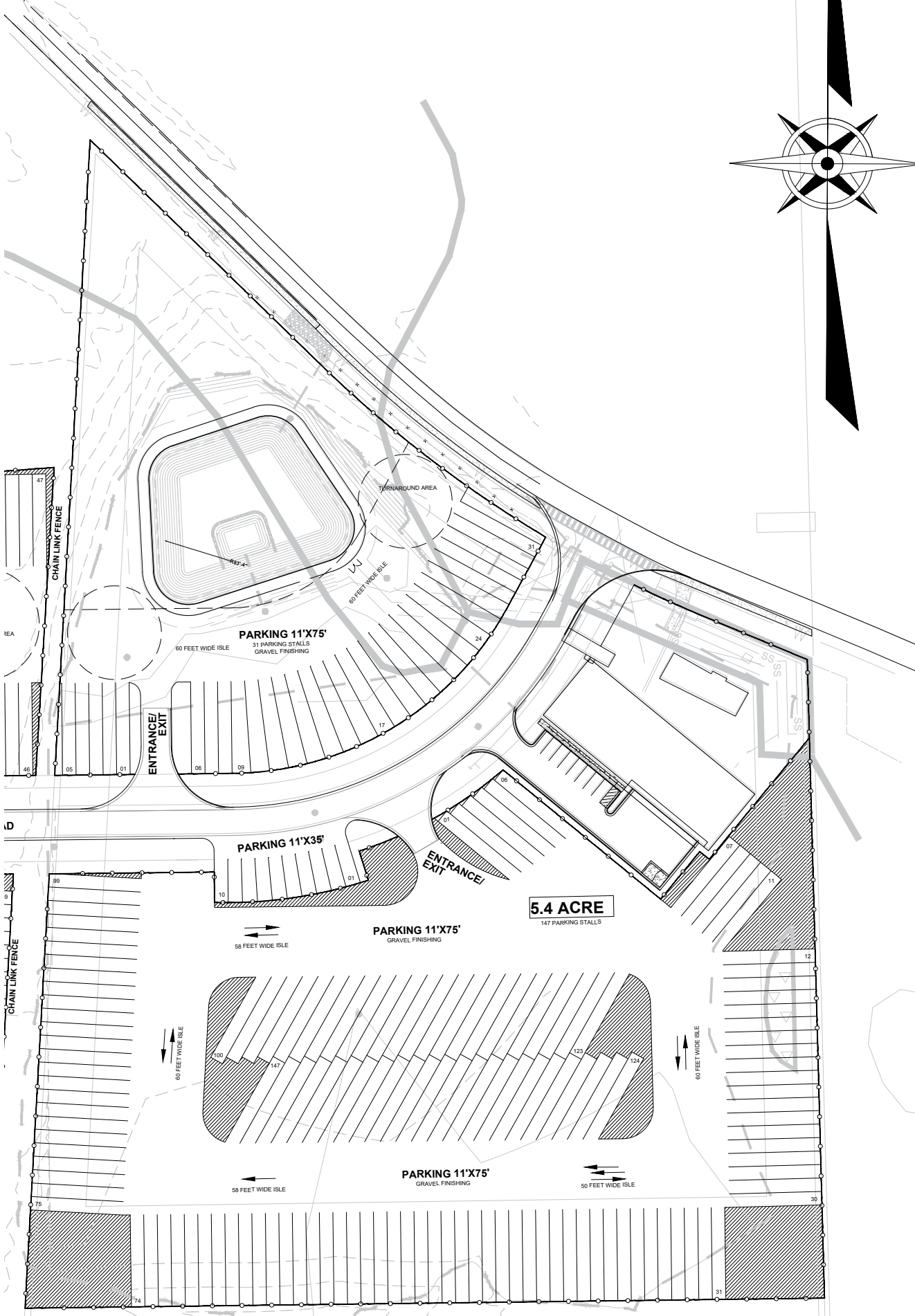
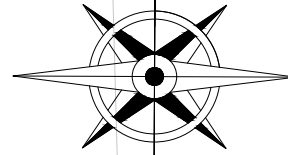
Highlights

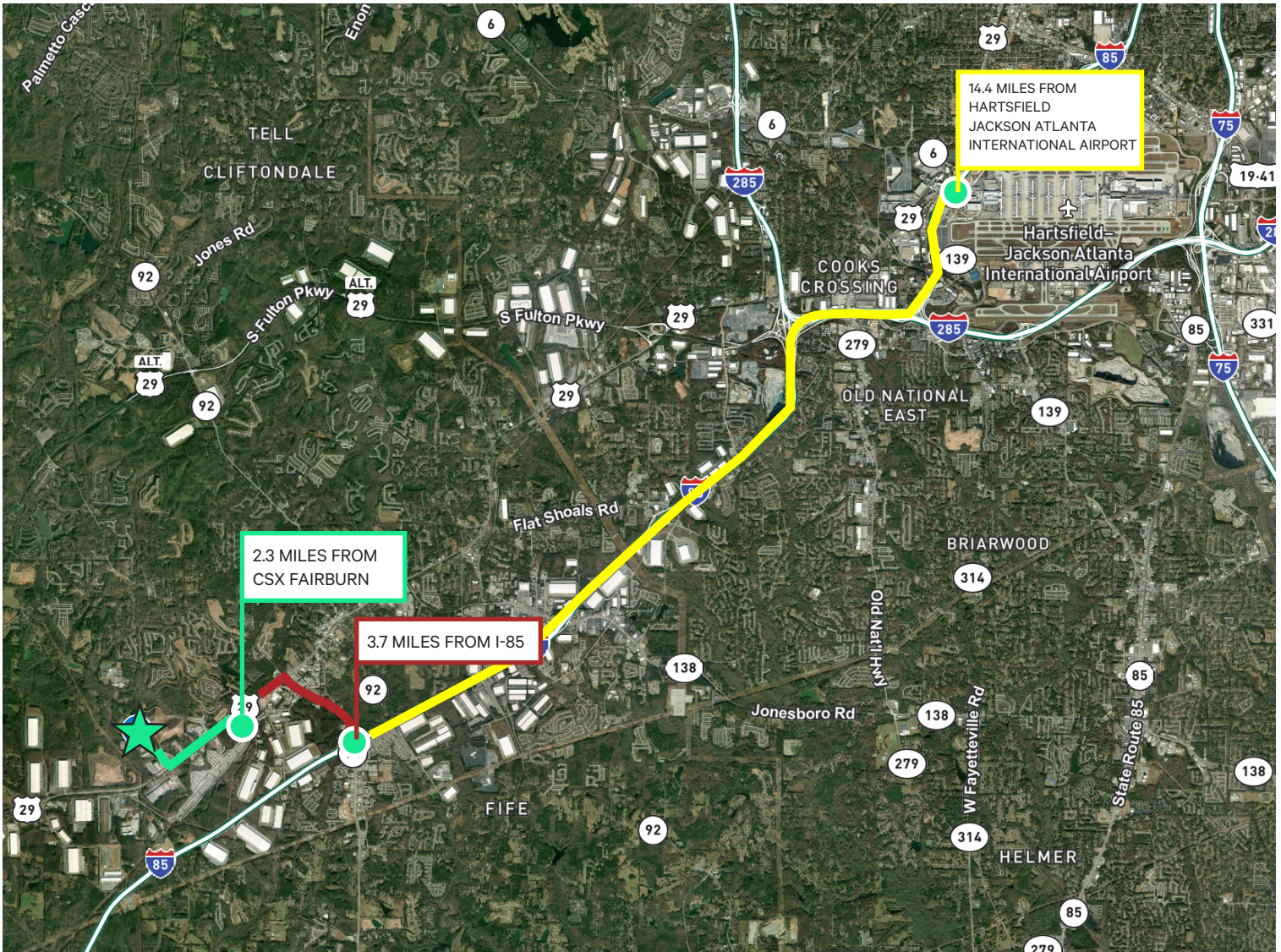
- + Zoned M-2 (Heavy Industrial), City of South Fulton
- + Graveled (additional improvements negotiable)
- + Flexible build-to-suit options available

Location

- + 2.3 miles to CSX Fairburn
- + 3.7 miles to I-85
- + 14.4 miles to Hartsfield-Jackson Atlanta International Airport

Sample Site Plan Layout





Contact Us

Rob Kruer

First Vice President
+1 770 363 5240
rob.kruer@cbre.com

David Nixon

Senior Vice President
+1 404 307 0467
david.nixon@cbre.com

© 2025 CBRE, Inc. All rights reserved. This information has been obtained from sources believed reliable, but has not been verified for accuracy or completeness. You should conduct a careful, independent investigation of the property and verify all information. Any reliance on this information is solely at your own risk. CBRE and the CBRE logo are service marks of CBRE, Inc. All other marks displayed on this document are the property of their respective owners, and the use of such logos does not imply any affiliation with or endorsement of CBRE. Photos herein are the property of their respective owners. Use of these images without the express written consent of the owner is prohibited.