

# FOR SALE

889 Elba Highway, Troy, AL 36079

# NAI TALCOR



## Occupied Bldg w/ Vacant Lot

- Prominent Corner on AL Hwy 87 in Troy, AL
- Sale includes adjacent land 2.67-acre parcel
- Occupied by Dermatology Solutions Group since 2017
- 2nd Renewal Option exercised through April 2026
- MG Lease / Annual Gross Rent: \$56,889
- Near Troy Eye Care, Oak Park Dental, Enhabit Hospice, Troy Health & Rehab, + various medical practitioners
- New single-family subdivision under development across highway
- Less than 1 mile to US Hwy 231
- Hwy 87 AADT: 15,071 VPD
- Hwy 231 AADT: 29,935 VPD

### OFFERING SUMMARY

<b>SALE PRICE</b>	\$1,074,000
<b>BUILDING SIZE</b>	4,244 SF
<b>OCCUPANCY</b>	100%
<b>CONSTRUCTED</b>	2006
<b>LOT SIZE</b>	3.6-Acres

Demographics	5 Miles	15 Miles	30 Miles
Total Population:	19,045	35,131	94,634
Average HH Income:	\$45,175	\$44,245	\$48,731

**TROY MAGAZINE (PIKE COUNTY)**

✉ **Kenny Whatley**  
+1 334 596 7890  
kwhatley@talcor.com

✉ **Shannon Auty**  
+1 334 406 1161  
sauty@talcor.com

No Warranty Or Representation, Express Or Implied, Is Made As To The Accuracy Of The Information Contained Herein. And The Same Is Submitted Subject To Errors, Omissions, Change Of Price, Rental Or Other Conditions, Prior Sale, Lease Or Financing, Or Withdrawal Without Notice, And Of Any Special Listing Conditions Imposed By Our Principals No Warranties Or Representations Are Made As To The Condition Of The Property Or Any Hazards Contained Therein Are Any To Be Implied.



**NAI TALCOR**  
107 Hidden Glen Way  
talcor.com

# FOR SALE

889 Elba Highway Troy, AL 36079

## PROPERTY OVERVIEW

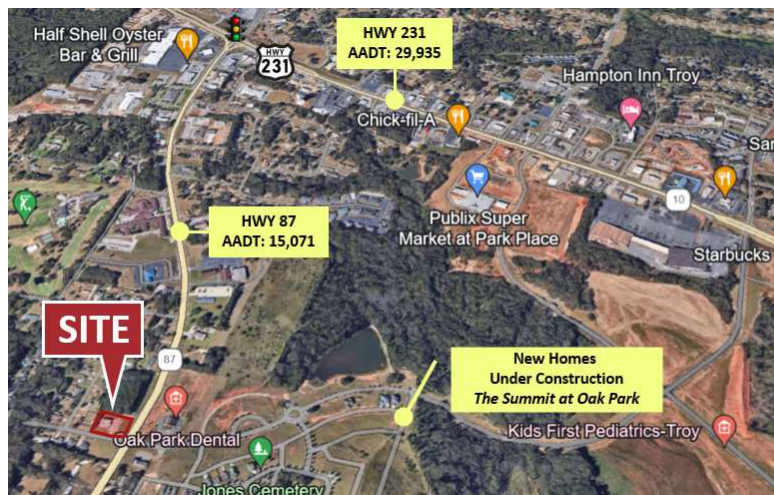
Introducing a prime investment or owner/user opportunity in Troy, Alabama. This medical office building consists of 4,244 sq. ft. and is situated on a prominent corner along AL Hwy 87. This Class B commercial property, constructed in 2006, has been occupied by Dermatology Solutions Group since 2017 with a recent lease extension through April 2026. Dermatology Solutions Group is a CAP accredited, full-service, physician-owned company offering comprehensive dermatology care, management services, and growth resources throughout the southeastern US. Established in 2006, their extensive team is comprised of nearly 40 providers and over 250 employees, delivering patient-centered medical, surgical, and cosmetic dermatology services spanning 20 offices across Alabama, Florida, Georgia, and Mississippi.

The building's strategic location further enhances its appeal, as it is situated less than 1 mile from Hwy 231, with an AADT of nearly 30,000 vehicles per day. Positioned on a highly visible 0.92-acre corner lot at the intersection of Highway 87 and Spradley Drive, this property offers excellent exposure and accessibility. Adjacent parcel consisting of 2.8 +/- acres is also available if expansion is desired for an owner/user. This property shares its surroundings with esteemed medical practices along Hwy 87 such as Troy Eye Care, Oak Park Dental, Enhabit Hospice, Troy Health & Rehab Center, Trulove Orthodontics, and various medical practitioners, indicating a thriving healthcare hub.

Troy, the proud home of Troy University, is characterized by a diverse community and an impressive 18,000+ student body. Troy University takes pride in offering a diverse selection of over 200 student clubs and organizations, complemented by a vast alumni network of more than 175,000 accomplished individuals. This network plays a significant role in upholding the city's flourishing economy.

### PROPERTY DETAILS

<b>SALE PRICE</b>	\$1,074,000
<b>ANNUAL GROSS RENT</b>	\$56,889
<b>OCCUPANCY</b>	100%
<b>BUILDING CLASS</b>	B
<b>YEAR BUILT</b>	2006
<b>ZONING</b>	CO



✉ **Kenny Whatley**  
+1 334 596 7890  
kwhatley@talcor.com

✉ **Shannon Auty**  
+1 334 406 1161  
sauty@talcor.com

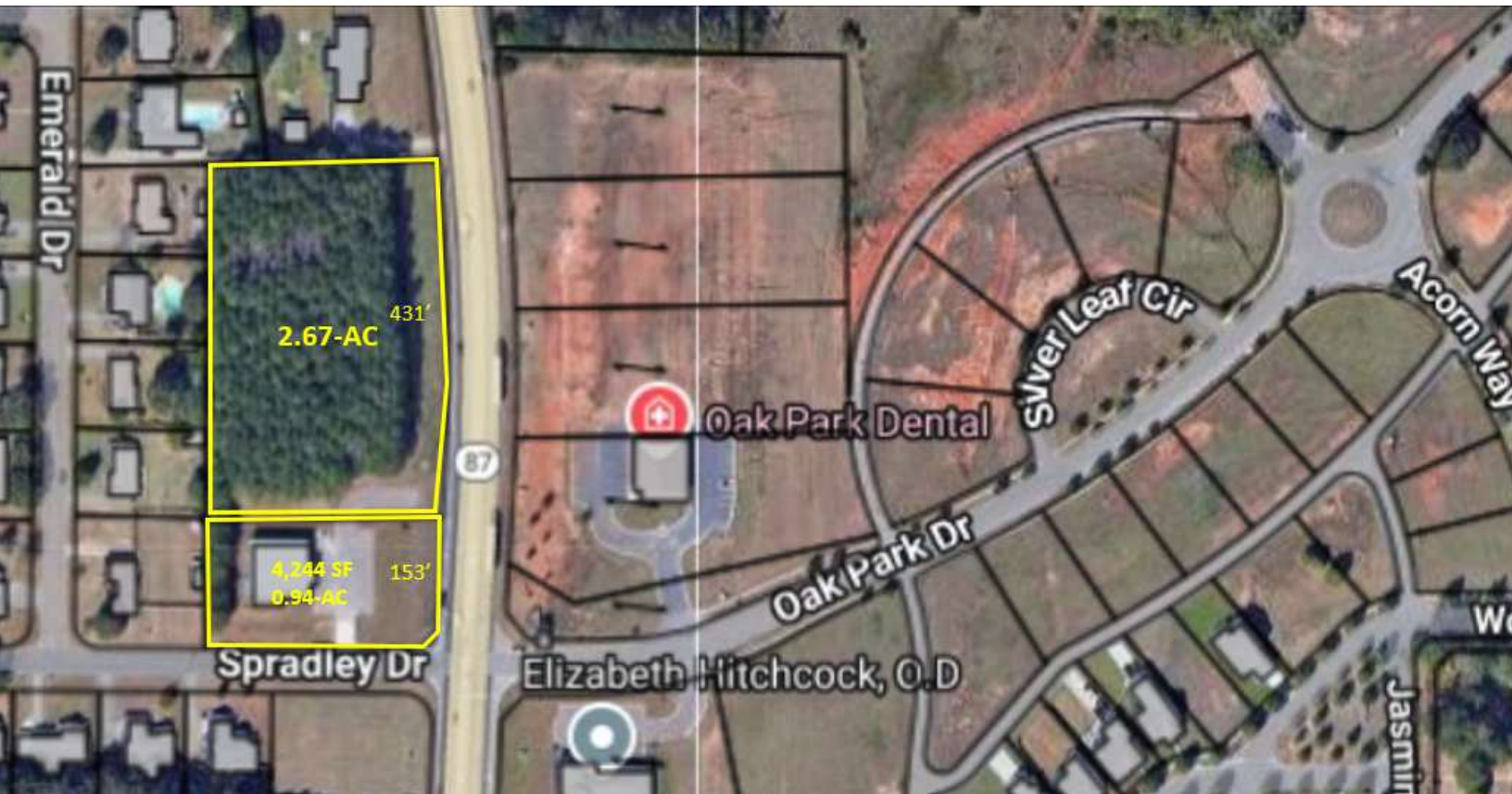
No Warranty Or Representation, Express Or Implied, Is Made As To The Accuracy Of The Information Contained Herein. And The Same Is Submitted Subject To Errors, Omissions, Change Of Price, Rental Or Other Conditions, Prior Sale, Lease Or Financing, Or Withdrawal Without Notice. And Of Any Special Listing Conditions Imposed By Our Principals No Warranties Or Representations Are Made As To The Condition Of The Property Or Any Hazards Contained Therein Are Any To Be Implied.

**NA TALCOR**



# FOR SALE

889 Elba Highway Troy, AL 36079



✉ **Kenny Whatley**  
+1 334 596 7890  
kwhatley@talcor.com

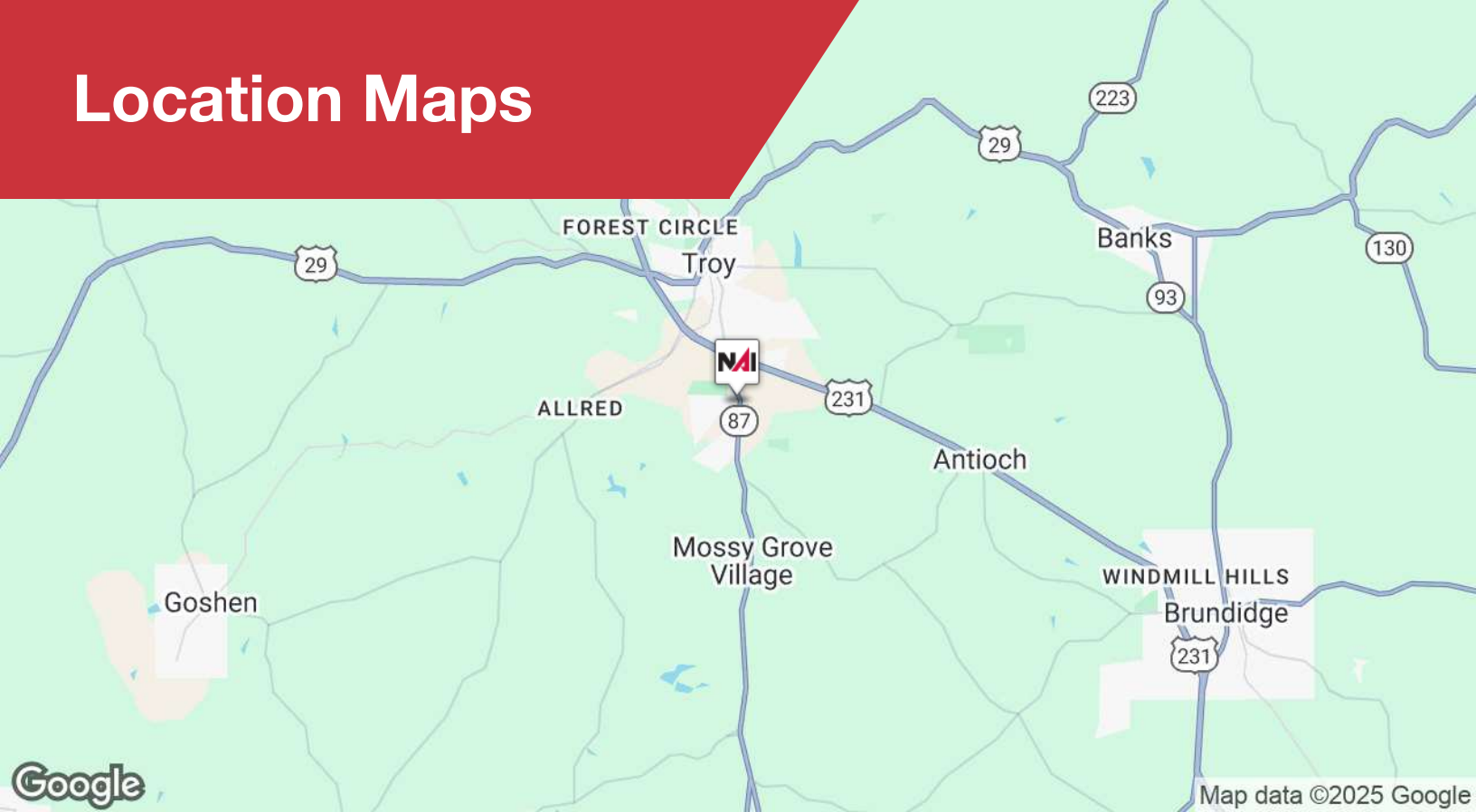
✉ **Shannon Auty**  
+1 334 406 1161  
sauty@talcor.com

No Warranty Or Representation, Express Or Implied, Is Made As To The Accuracy Of The Information Contained Herein. And The Same Is Submitted Subject To Errors, Omissions, Change Of Price, Rental Or Other Conditions, Prior Sale, Lease Or Financing, Or Withdrawal Without Notice, And Of Any Special Listing Conditions Imposed By Our Principals No Warranties Or Representations Are Made As To The Condition Of The Property Or Any Hazards Contained Therein Are Any To Be Implied.

**NA TALCOR**



# Location Maps



✉ **Kenny Whatley**  
+1 334 596 7890  
kwhatley@talcor.com

✉ **Shannon Auty**  
+1 334 406 1161  
sauty@talcor.com

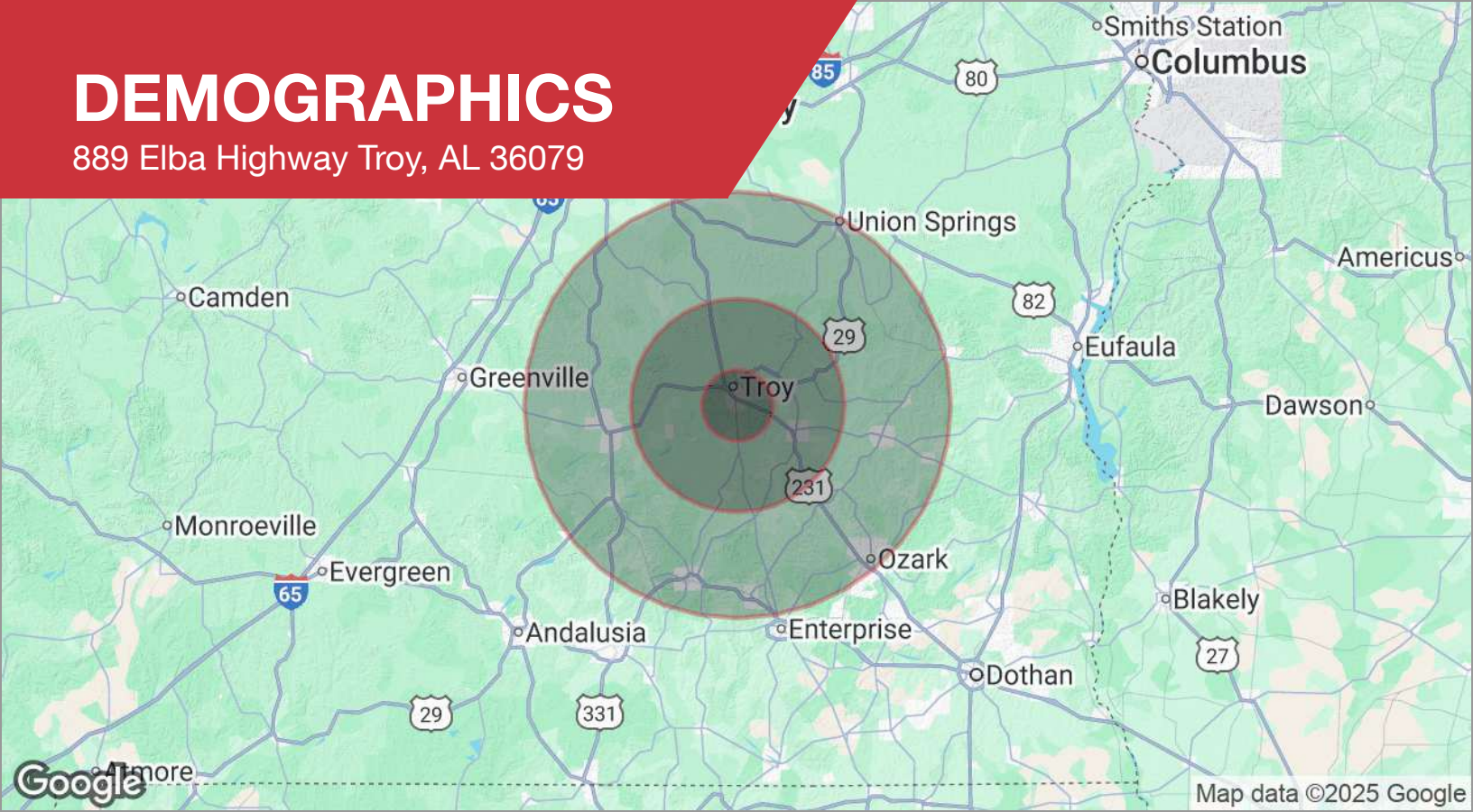
No Warranty Or Representation, Express Or Implied, Is Made As To The Accuracy Of The Information Contained Herein. And The Same Is Submitted Subject To Errors, Omissions, Change Of Price, Rental Or Other Conditions, Prior Sale, Lease Or Financing, Or Withdrawal Without Notice. And Of Any Special Listing Conditions Imposed By Our Principals No Warranties Or Representations Are Made As To The Condition Of The Property Or Any Hazards Contained Therein Are Any To Be Implied.

**NAITALCOR**



# DEMOGRAPHICS

889 Elba Highway Troy, AL 36079



## DEMOGRAPHICS

POPULATION	5 MILES	15 MILES	30 MILES
Total population	19,045	35,131	94,634
Median age	31.0	35.0	39.9
Median age (male)	29.4	32.5	37.3
Median age (Female)	33.3	37.9	42.9
HOUSEHOLDS & INCOME	5 MILES	15 MILES	30 MILES
Total households	9,137	17,038	45,169
# of persons per HH	2.1	2.1	2.1
Average HH income	\$45,175	\$44,245	\$48,731
Average house value	\$126,017	\$122,998	\$127,860

\* Demographic data derived from 2020 ACS - US Census