

FOR LEASE

5015 - 5225 Tacoma Mall Blvd
Tacoma, WA 98409



EVERGREEN PLAZA

Jameson Sullivan

First Western Properties—Tacoma Inc. | 253.472.0404
6402 Tacoma Mall Blvd, Tacoma, WA 98409 | fwp-inc.com

AVAILABLE

» SUITE 101-A 2,855 SF \$24.00 PSF + NNN

» SUITE 102-D 4,823 SF \$20.00 PSF + NNN

*Second Generation Restaurant (Can be demised)

» SUITE 103-B 1,925 SF \$20.00 PSF + NNN

» PAD 1 16,500 SF CALL FOR DETAILS



Population



Average HH Income



Daytime Population

Regis - 2025

Mile 1	18,850	\$95,041	10,741
Mile 3	145,353	\$104,129	88,651
Mile 5	315,717	\$109,132	216,428

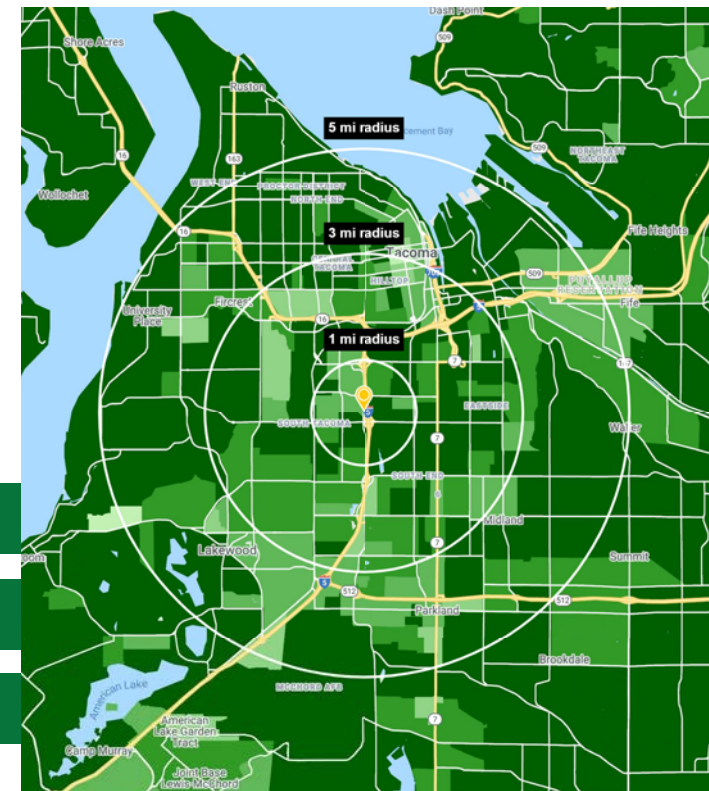
NEARBY TENANTS



SURGE

MATTRESSFIRM

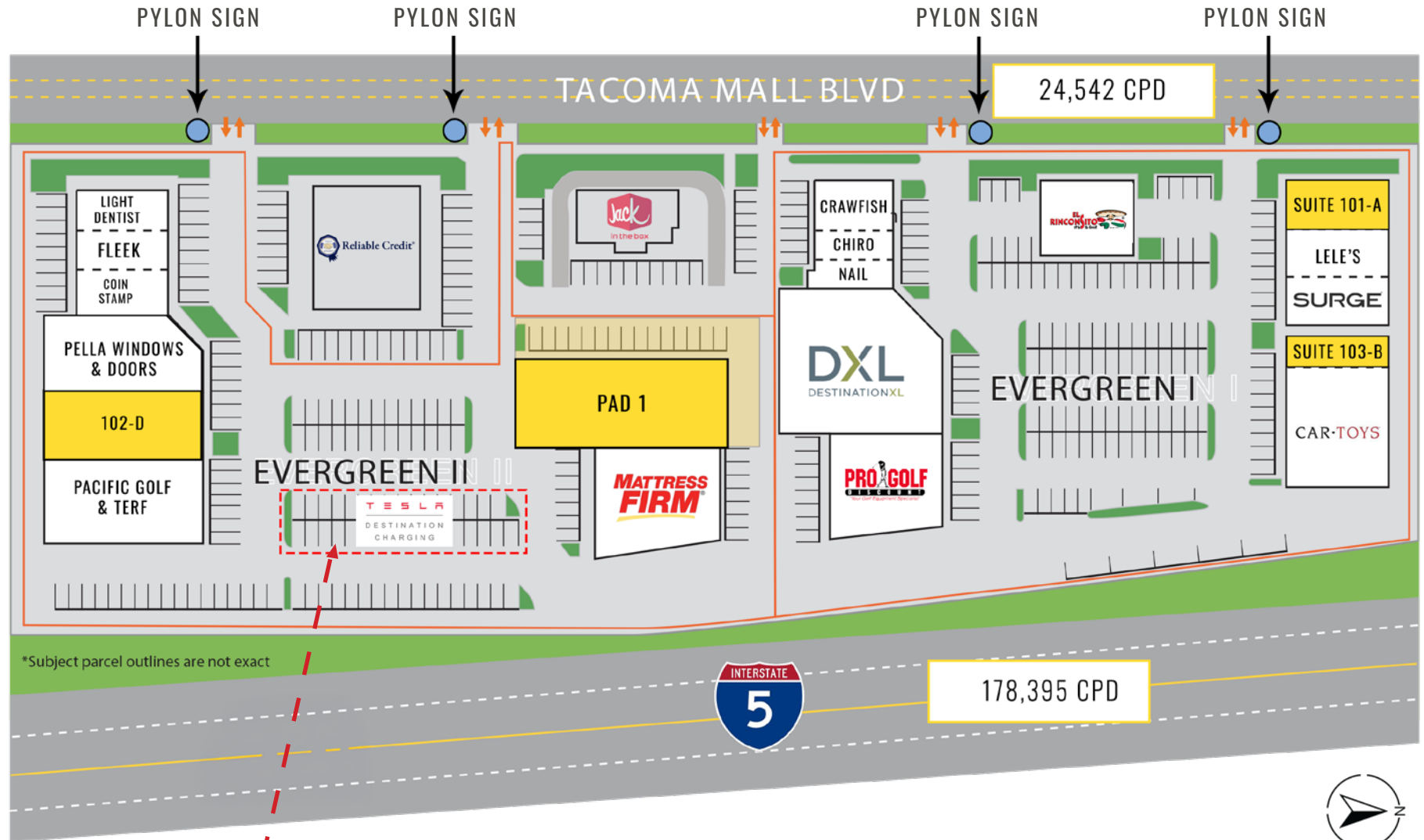
CAR•TOYS



PHOTOS



SITE PLAN



12 TESLA CHARGING STATIONS

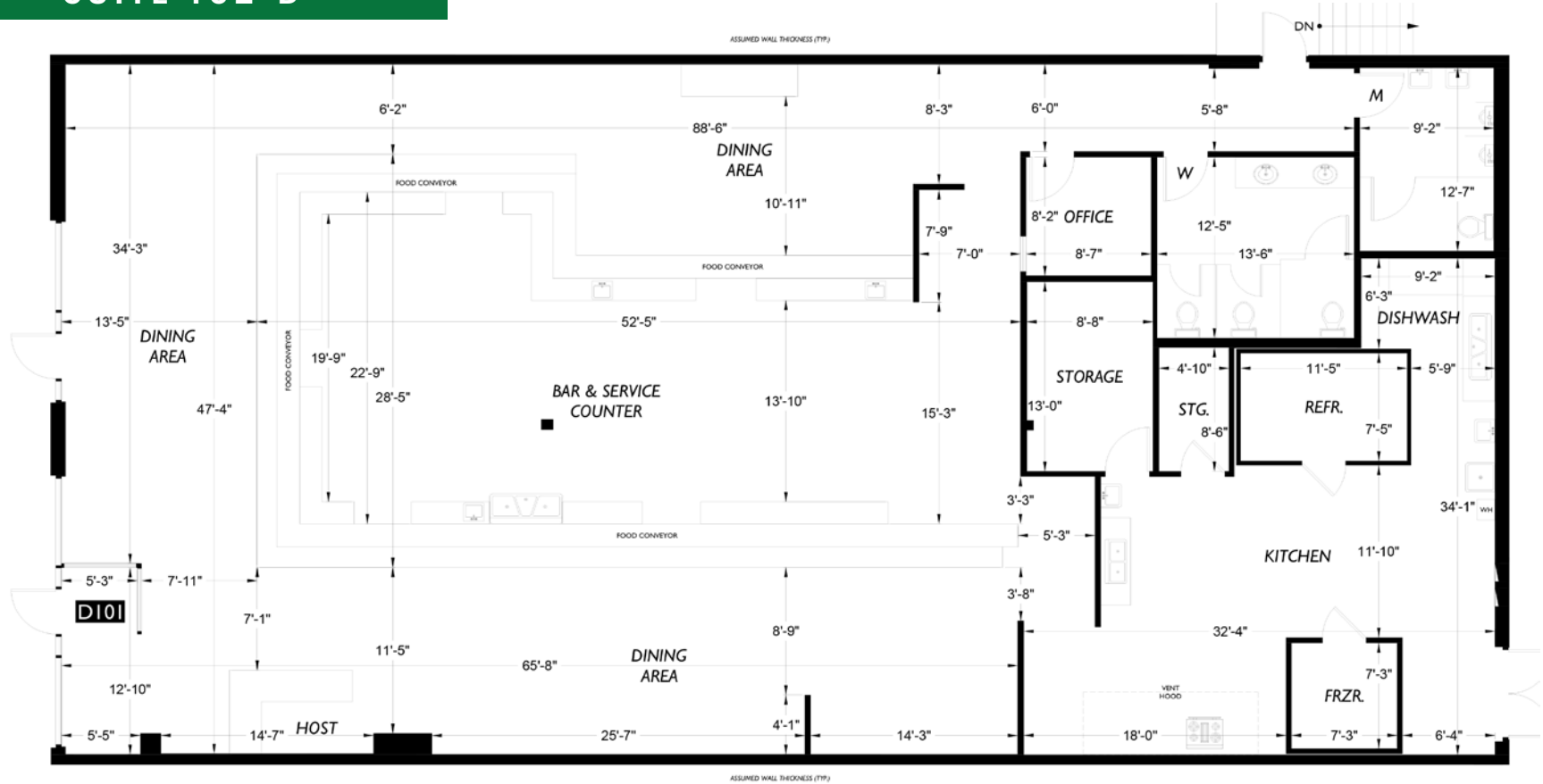


AVAILABLE

Suite	SF	Pricing
101-A	2,855	\$24 PSF + NNN
102-D	4,823	\$20 PSF + NNN
103-B	1,925	\$20 PSF + NNN
Pad 1	16,500	Call for Details

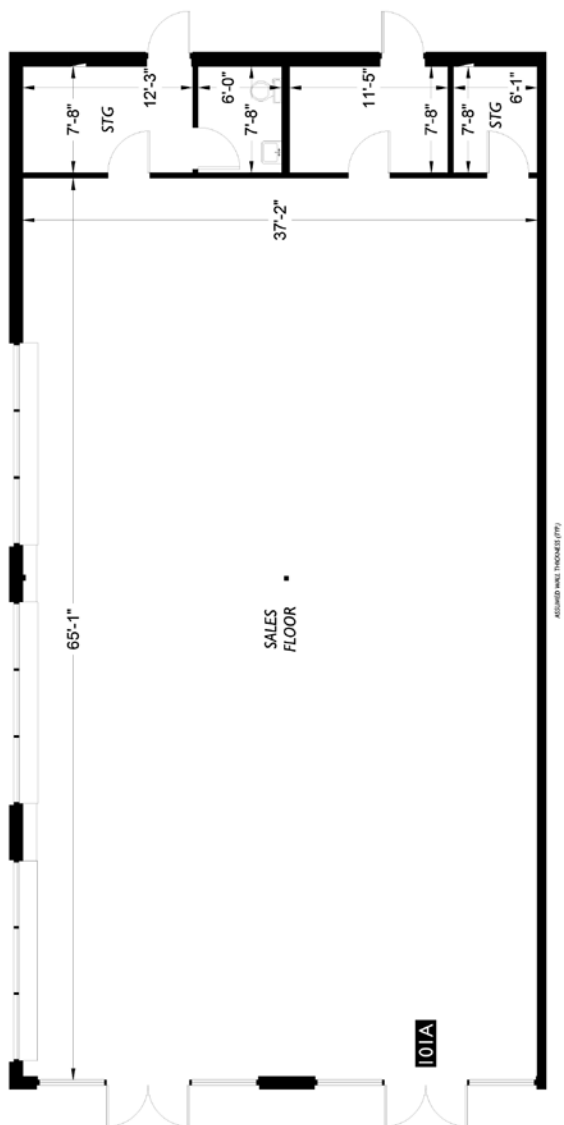
*Second Generation Restaurant
(Can be demised)

SUITE 102-D

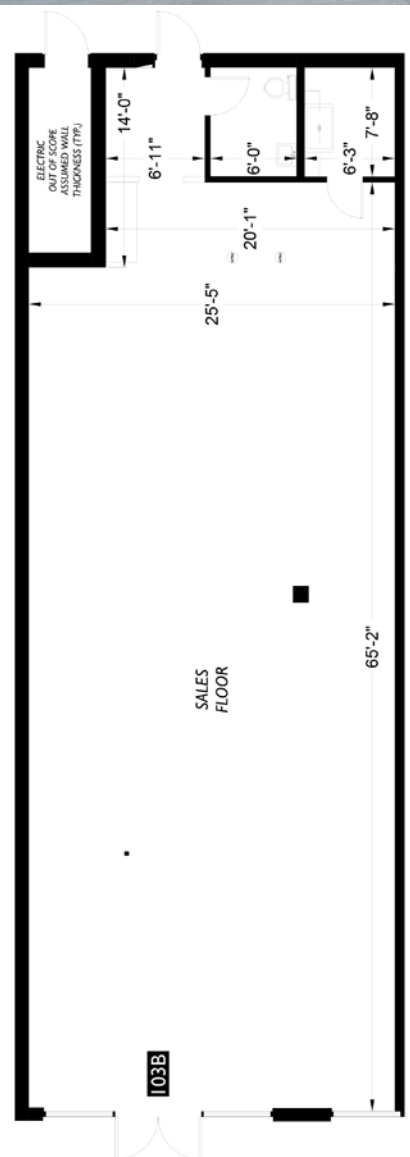


FLOOR PLANS

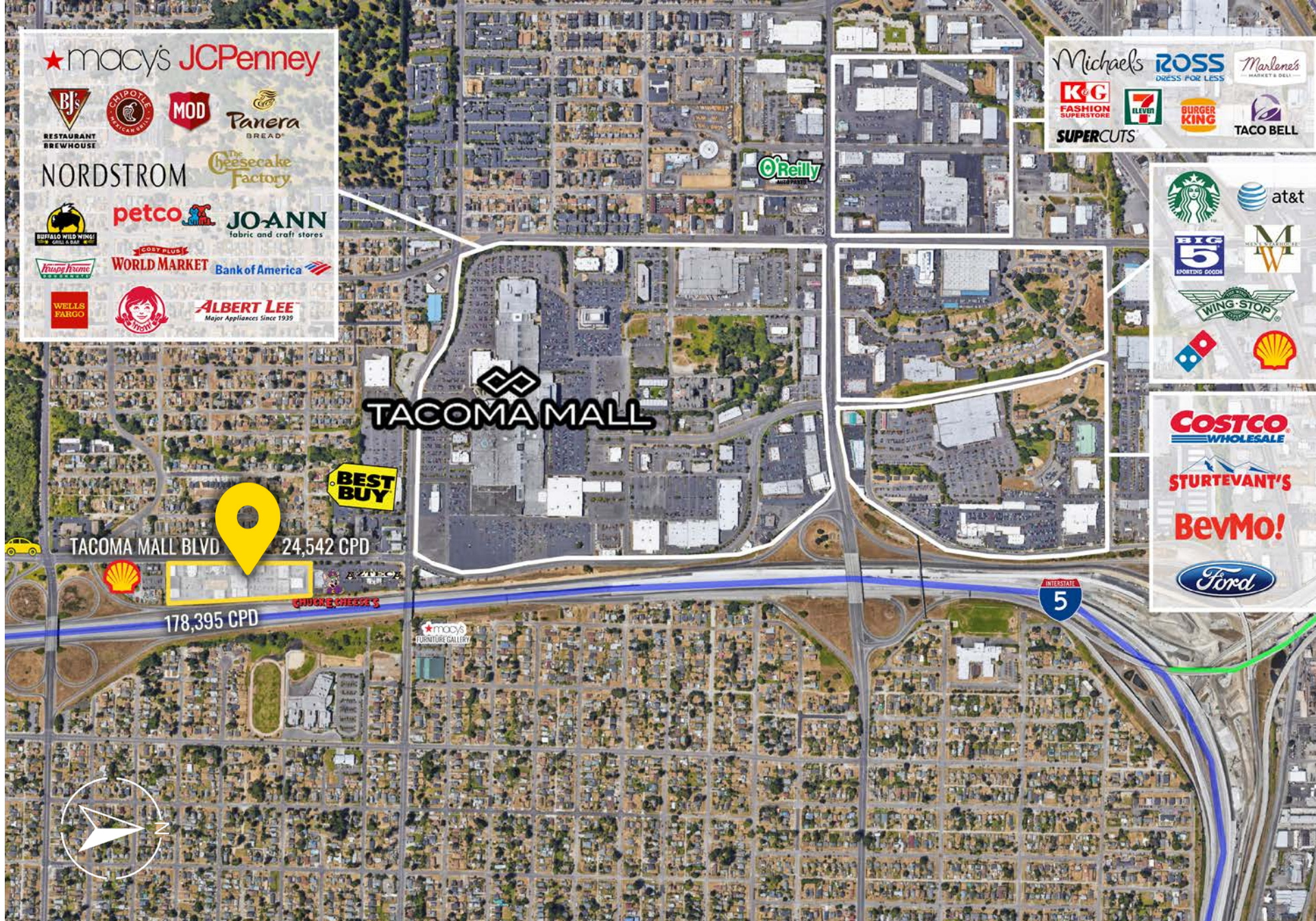
SUITE 101-A



SUITE 103-B



LOCATION DETAILS



24,542 CPD
Tacoma Mall Blvd



Excellent access
to I-5 & Hwy 16

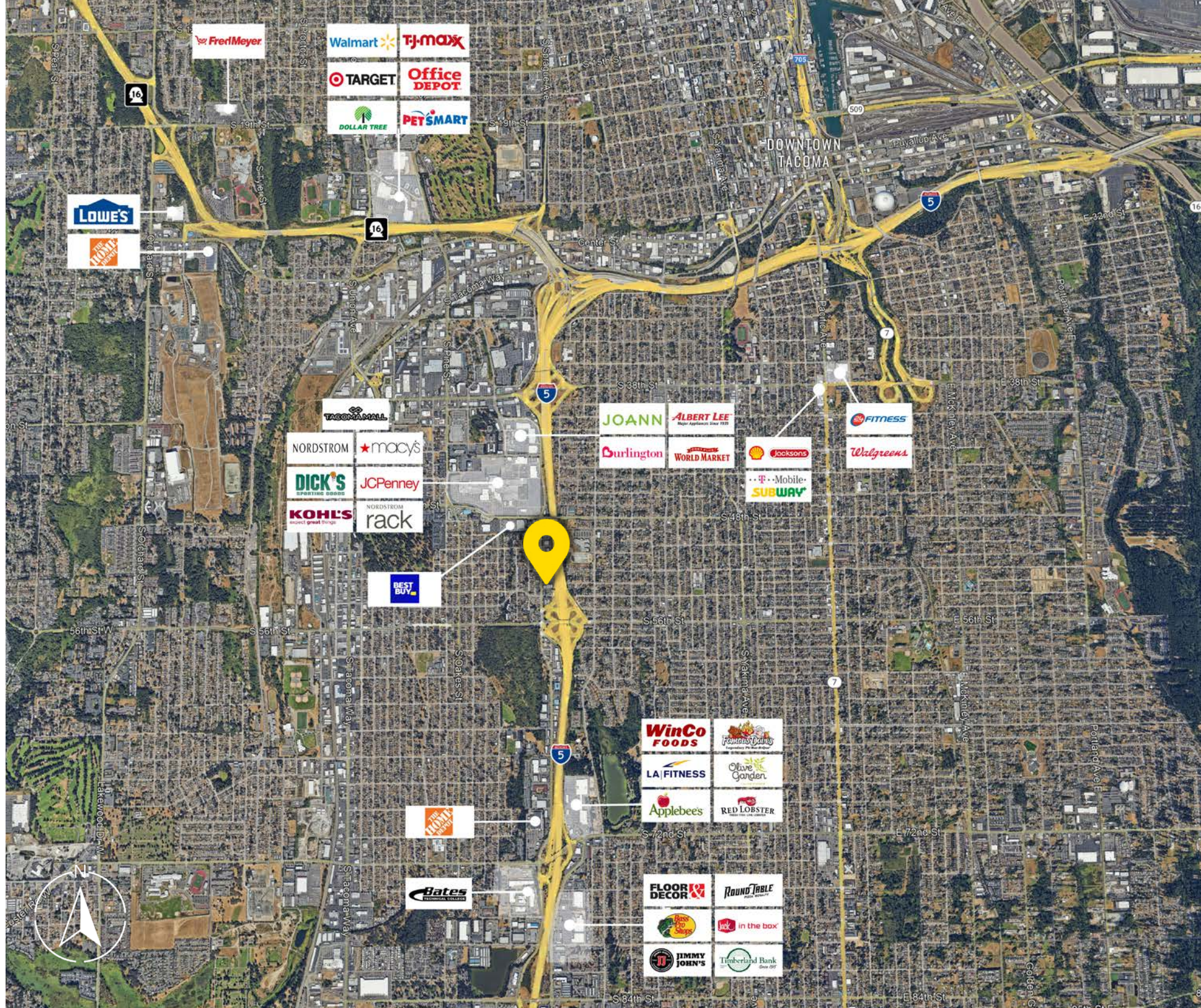


Located within dense
retail & residential area



Excellent visibility from
I-5 with 178,395 CPD

LOCATION DETAILS



TACOMA | KIRKLAND | PORTLAND | SEATTLE

RELATIONSHIP FOCUSED.
RESULTS DRIVEN.

JAMESON SULLIVAN

📞 253.471.5508

✉️ jsullivan@firstwesternproperties.com



First Western Properties—Tacoma Inc. | 253.472.0404
6402 Tacoma Mall Blvd, Tacoma, WA 98409 | fwp-inc.com

© First Western Properties, Inc. DISCLAIMER: The above information has been secured from sources believed to be reliable, however, no representations are made to its accuracy. Prospective tenants or buyers should consult their professional advisors and conduct their own independent investigation. Properties are subject to change in price and/or availability without notice.