

**MIDDLETOWN, NY**

140 DOLSON AVENUE, MIDDLETOWN, NY 10940



**OFFERING SUMMARY**

Available SF: 2,300 SF

Lease Rate: Call For Details

**NEIGHBORING TENANTS**



**PROPERTY OVERVIEW**

2,300 SF Freestanding Building w/ Drive Thru

**PROPERTY HIGHLIGHTS**

- Available Immediately
- 2,300 SF on .33 Acres
- Prime Retail Great for QSR/Bank w/ Proven Track Record
- Excellent Exposure & Visibility
- Densely Populated Marketplace
- 17 Parking Spots
- Convenient Access to RT 17M, RT 84, RT 6 and RT 17
- Nearby to Orange County Community College
- Located at Signalized Intersection
- Adjacently Anchored by Shop Rite
- 13,000+ Vehicles Per Day

FOR MORE INFORMATION CONTACT:

**SCOTT MILICH**

201.703.9700 x139

smilich@thegoldsteingroup.com

Licensed Real Estate Broker | 45 EISENHOWER DRIVE | SUITE 246 | PARAMUS, NJ 07652

All information is from sources deemed reliable and is submitted subject to errors, omissions, change of price, terms, rental, prior sale and withdrawal without notice.



THEGOLDSTEINGROUP.COM

**MIDDLETOWN, NY**

140 DOLSON AVENUE, MIDDLETOWN, NY 10940



FOR MORE INFORMATION CONTACT:

**SCOTT MILICH**

201.703.9700 x139

smilich@thegoldsteingroup.com

Licensed Real Estate Broker | 45 EISENHOWER DRIVE | SUITE 246 | PARAMUS, NJ 07652

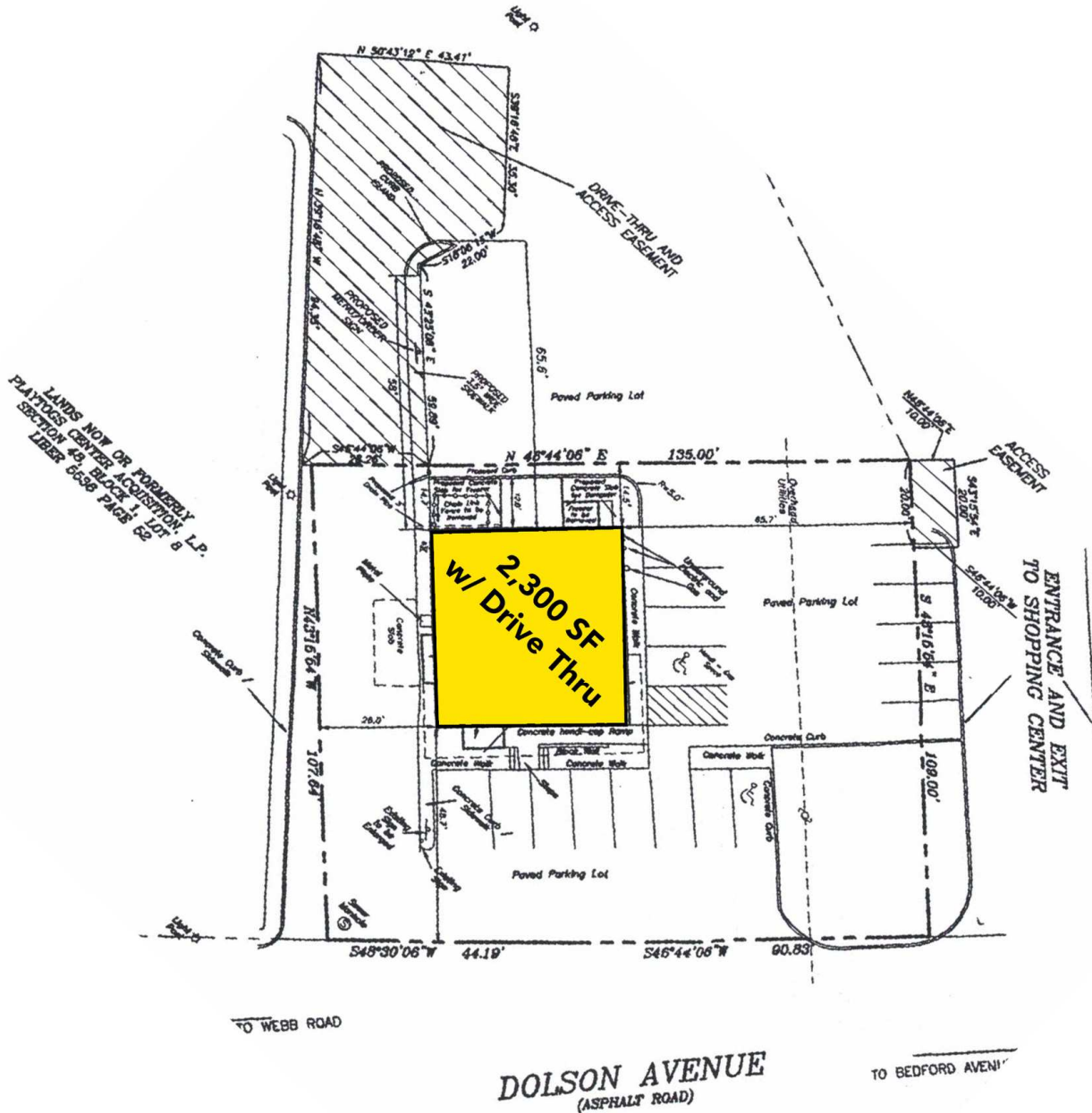
All information is from sources deemed reliable and is submitted subject to errors, omissions, change of price, terms, rental, prior sale and withdrawal without notice.



THEGOLDSTEINGROUP.COM

**MIDDLETOWN, NY**

140 DOLSON AVENUE, MIDDLETOWN, NY 10940



FOR MORE INFORMATION CONTACT:

**SCOTT MILICH**  
201.703.9700 x139  
smilich@thegoldsteingroup.com

Licensed Real Estate Broker | 45 EISENHOWER DRIVE | SUITE 246 | PARAMUS, NJ 07652

All information is from sources deemed reliable and is submitted subject to errors, omissions, change of price, terms, rental, prior sale and withdrawal without notice.



THEGOLDSTEINGROUP.COM

MIDDLETOWN, NY

140 DOLSON AVENUE, MIDDLETOWN, NY 10940



FOR MORE INFORMATION CONTACT:

**SCOTT MILICH**  
201.703.9700 x139  
smilich@thegoldsteingroup.com

Licensed Real Estate Broker | 45 EISENHOWER DRIVE | SUITE 246 | PARAMUS, NJ 07652

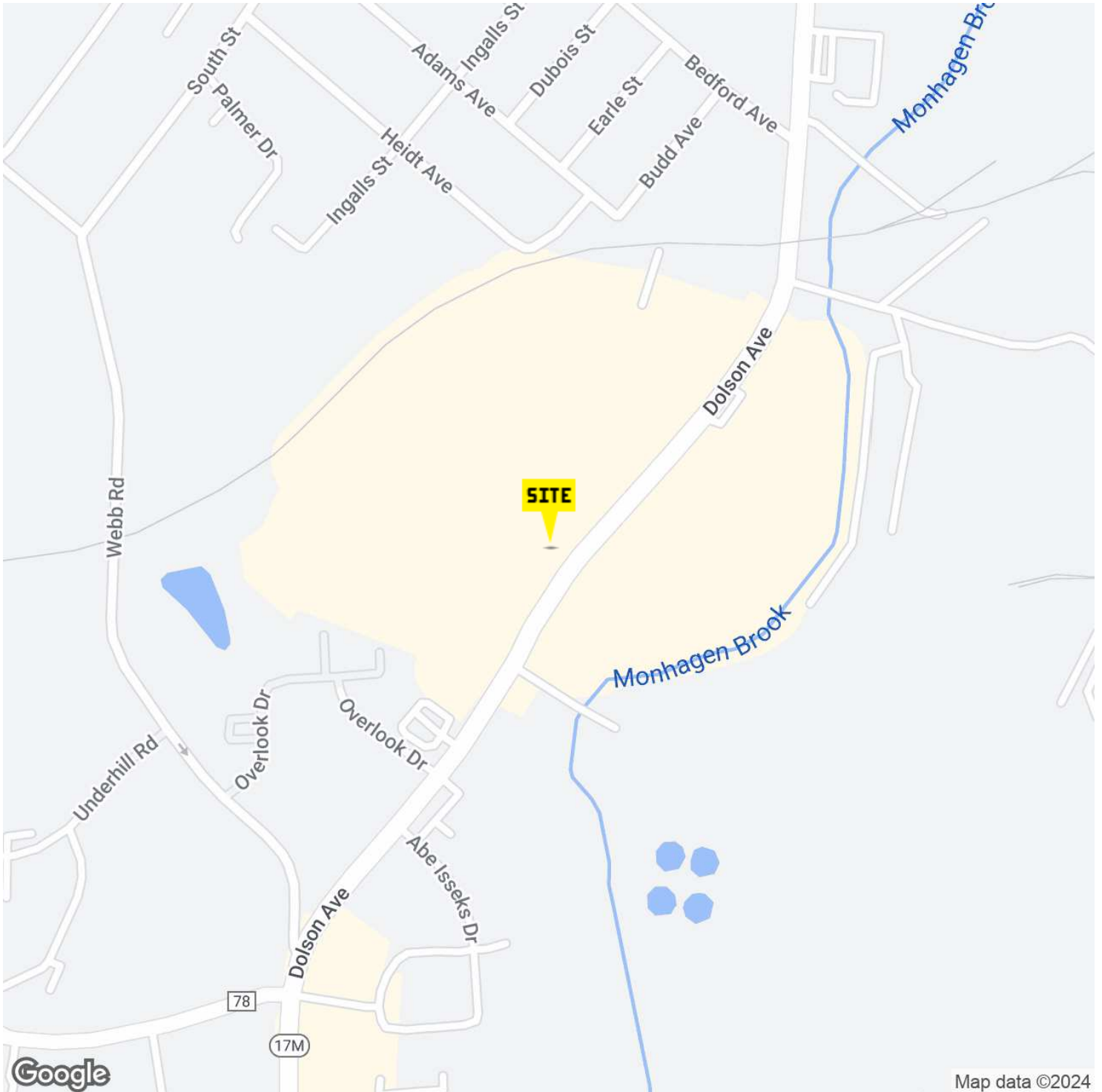
All information is from sources deemed reliable and is submitted subject to errors, omissions, change of price, terms, rental, prior sale and withdrawal without notice.



THEGOLDSTEINGROUP.COM

**MIDDLETOWN, NY**

140 DOLSON AVENUE, MIDDLETOWN, NY 10940



FOR MORE INFORMATION CONTACT:

**SCOTT MILICH**

201.703.9700 x139  
smilich@thegoldsteingroup.com

Licensed Real Estate Broker | 45 EISENHOWER DRIVE | SUITE 246 | PARAMUS, NJ 07652

All information is from sources deemed reliable and is submitted subject to errors, omissions, change of price, terms, rental, prior sale and withdrawal without notice.



THEGOLDSTEINGROUP.COM

