

Industrial Warehouse Space For Lease

# Mid America Business Park

8120 Mid America Blvd, Oklahoma City 73131

**WIGGIN**  
PROPERTIES, LLC



## MABP Building III

8120 Mid America Blvd.

Type: Industrial  
Total Rentable Area: 82,995 SF

Market Rent: \$6.00-\$7.00 NNN  
Zoning: I-2

Roof: TPO  
Clear Height: 24 ft. eaves, 32 ft. centers  
Dock Doors: 4 - 8' x 10'  
Grade Doors: 2: 1 - 12' x 14' ; 1 - 20' x 20'

Call Michael Raff at **405.418.7118**

[mraff@wiggprop.com](mailto:mraff@wiggprop.com) | [wiggprop.com](http://wiggprop.com)

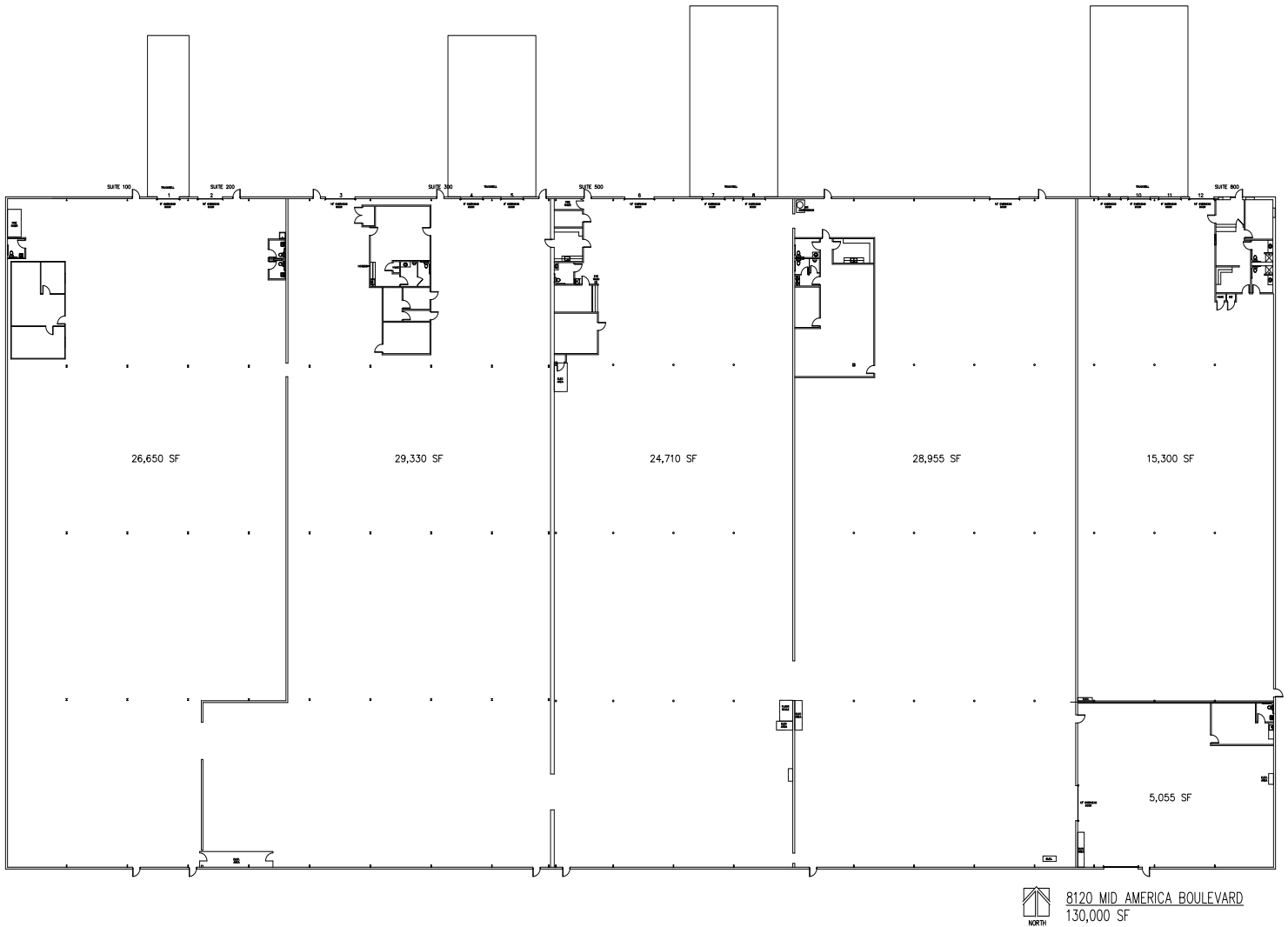
This material is provided for information purposes only. It is from sources believed to be reliable. However, Wiggin Properties makes no warranties or representations, expressed or implied, as to the accuracy or sufficiency of the information. It is presented subject to errors, omissions, changes or withdrawal without notice. Square footage per owner. Maps © 2016 Google.

Industrial Warehouse Space For Lease

# Mid America Business Park

8120 Mid America Blvd, Oklahoma City 73131

**WIGGIN**  
PROPERTIES, LLC



 8120 MID AMERICA BOULEVARD  
130,000 SF

Call Michael Raff at **405.418.7118**

[mraff@wigginprop.com](mailto:mraff@wigginprop.com) | [wigginprop.com](http://wigginprop.com)

This material is provided for information purposes only. It is from sources believed to be reliable. However, Wiggin Properties makes no warranties or representations, expressed or implied, as to the accuracy or sufficiency of the information. It is presented subject to errors, omissions, changes or withdrawal without notice. Square footage per owner. Maps © 2016 Google.