

PMS

Perishable Management Services, LLC

CONTEMPORARY LAB/R&D BUILDING
MULTIPLE UNITS FOR LEASE!



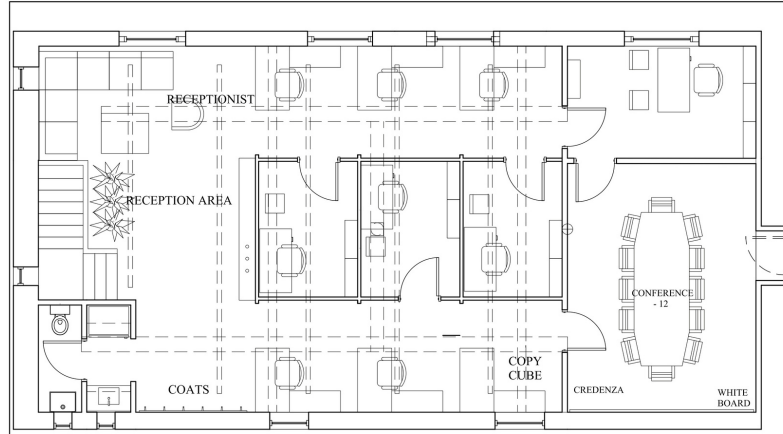
11 WARD ST, SOMERVILLE MA

Unit 2: 4,613 SF 2nd Floor Office/Lab Space - Contiguous to Unit 3 - Former Formlabs space

Unit 4: 2,000 SF 1st Floor Office / Creative Space - Below Unit 2

Contiguous to the lab space for Unit 2 so perfect for expansion of the lab!

- ✓ MOVE IN READY LAB
- ✓ 2 FUME HOODS AND EYEWASH STATION
- ✓ OWNER WILL TURNKEY IMPROVEMENTS
- ✓ OPEN CONCEPT OFFICE
- ✓ MEZZANINE BREAK AREA WITH KITCHENETTE AND TWO PRIVATE OFFICES
- ✓ CATHEDRAL CEILINGS
- ✓ LOFT KITCHENETTE
- ✓ OFF-STREET PARKING
- ✓ PRIVATE MEN'S AND WOMEN'S RESTROOMS



SCENE A - FLOOR PLAN

NOTE: THESE ARE CONCEPTUAL PLANS AND ARE NOT FOR CONSTRUCTION.

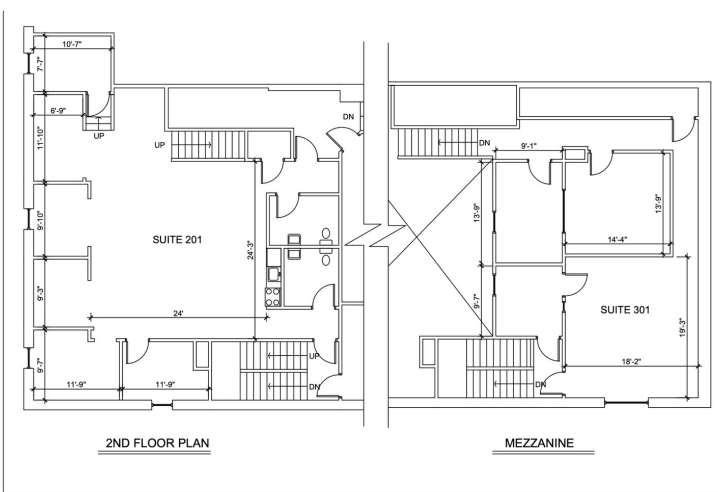
Perishable Management Services, LLC

Joel B. Miller

Melissa Chaput

office: (617) 424-0040
 cell: (617) 840-1484
 joel@permanser.com

cell: (603) 591-5082
 melissa@permanser.com



DSA ARCHITECTS ONE SHOTTER WAY 1107 OLS, #1 781-391-1939
 FLOOR PLAN 11 Ward Street, Somerville, MA
3,403 RSF

