

OFFICE FOR SUBLEASE SEVENTEEN10 BUILDING

1710 W. Lake Street, Minneapolis, MN 55408



SUBLEASE HIGHLIGHTS

LEASE RATE: \$32.00 SF/YR (Gross)
AVAILABLE SF: 8,175 SF
REMAINING LEASE TERM: Through 8/31/26

PROPERTY INFORMATION

ADDRESS: 1710 W. Lake Street
Minneapolis, MN 55408
COUNTY: Hennepin
YEAR BUILT: 2016
FLOOR: Second
PARKING: 5 Underground spaces
included in lease. Ample
street parking nearby.



PROPERTY OVERVIEW

Prime Office Space for Sublease in high-traffic Uptown location. Class A, modern-built space located on the second floor of the building. Located within walking distance to a variety of retail and restaurant amenities and Bde Maka Ska.

Kai Thomsen
kthomsen@lee-associates.com
D 952.223.6724

All information furnished regarding property for sale, rental or financing is from sources deemed reliable, but no warranty or representation is made for the accuracy thereof and same is submitted to errors, omissions, change of price, rental or other conditions prior to sale, lease or financing or withdrawal without notice. No liability of any kind is to be imposed on the broker herein.

OFFICE FOR SUBLEASE SEVENTEEN10 BUILDING

1710 W. Lake Street, Minneapolis, MN 55408

**LEE &
ASSOCIATES**

COMMERCIAL REAL ESTATE SERVICES



Kai Thomsen
kthomsen@lee-associates.com
D 952.223.6724

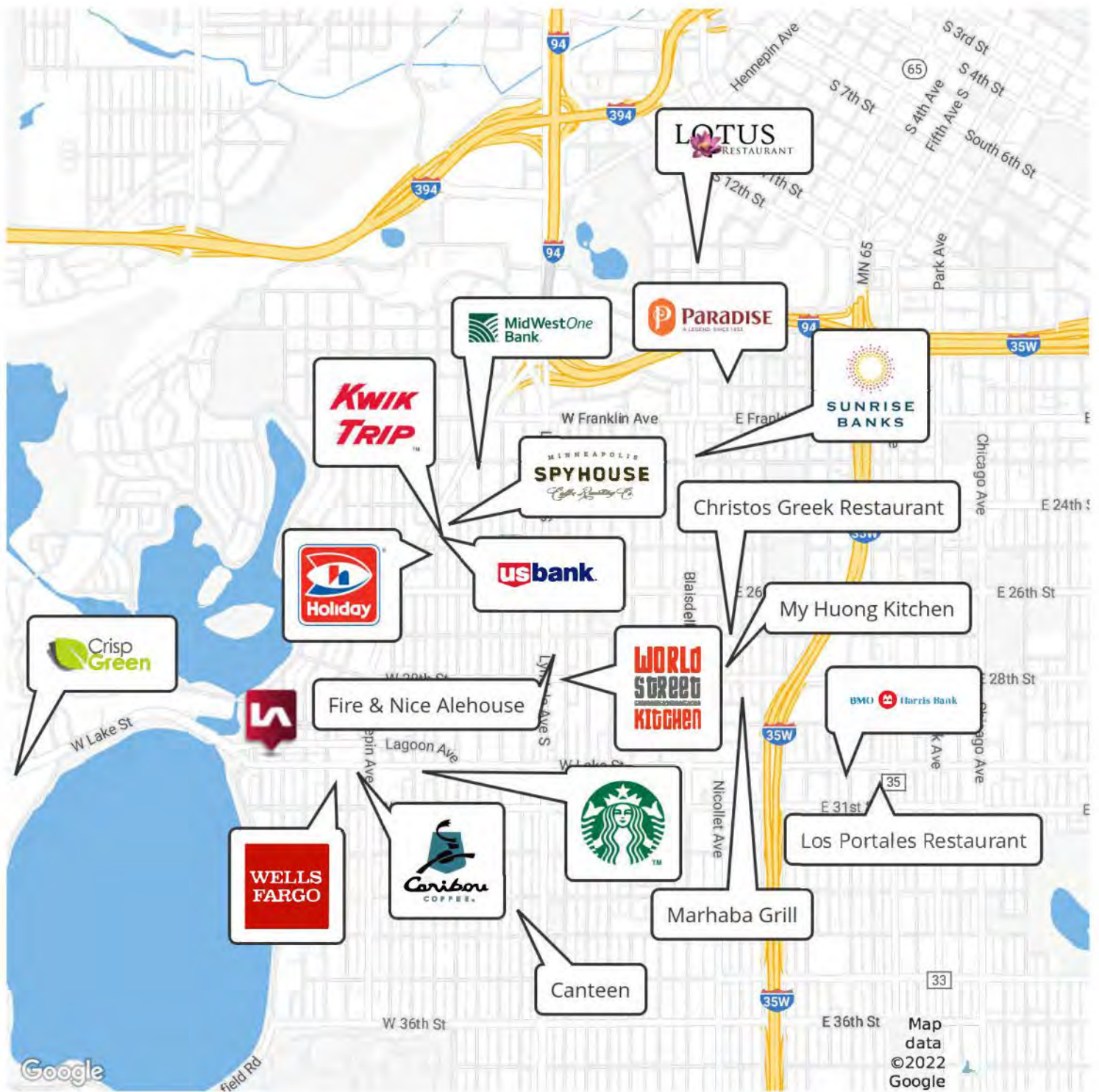
All information furnished regarding property for sale, rental or financing is from sources deemed reliable, but no warranty or representation is made to the accuracy thereof and same is submitted to errors, omissions, change of price, rental or other conditions prior to sale, lease or financing or withdrawal without notice. No liability of any kind is to be imposed on the broker herein.

OFFICE FOR LEASE SEVENTEEN10 BUILDING

1710 W. Lake Street, Minneapolis, MN 55408

LEE & ASSOCIATES

COMMERCIAL REAL ESTATE SERVICES



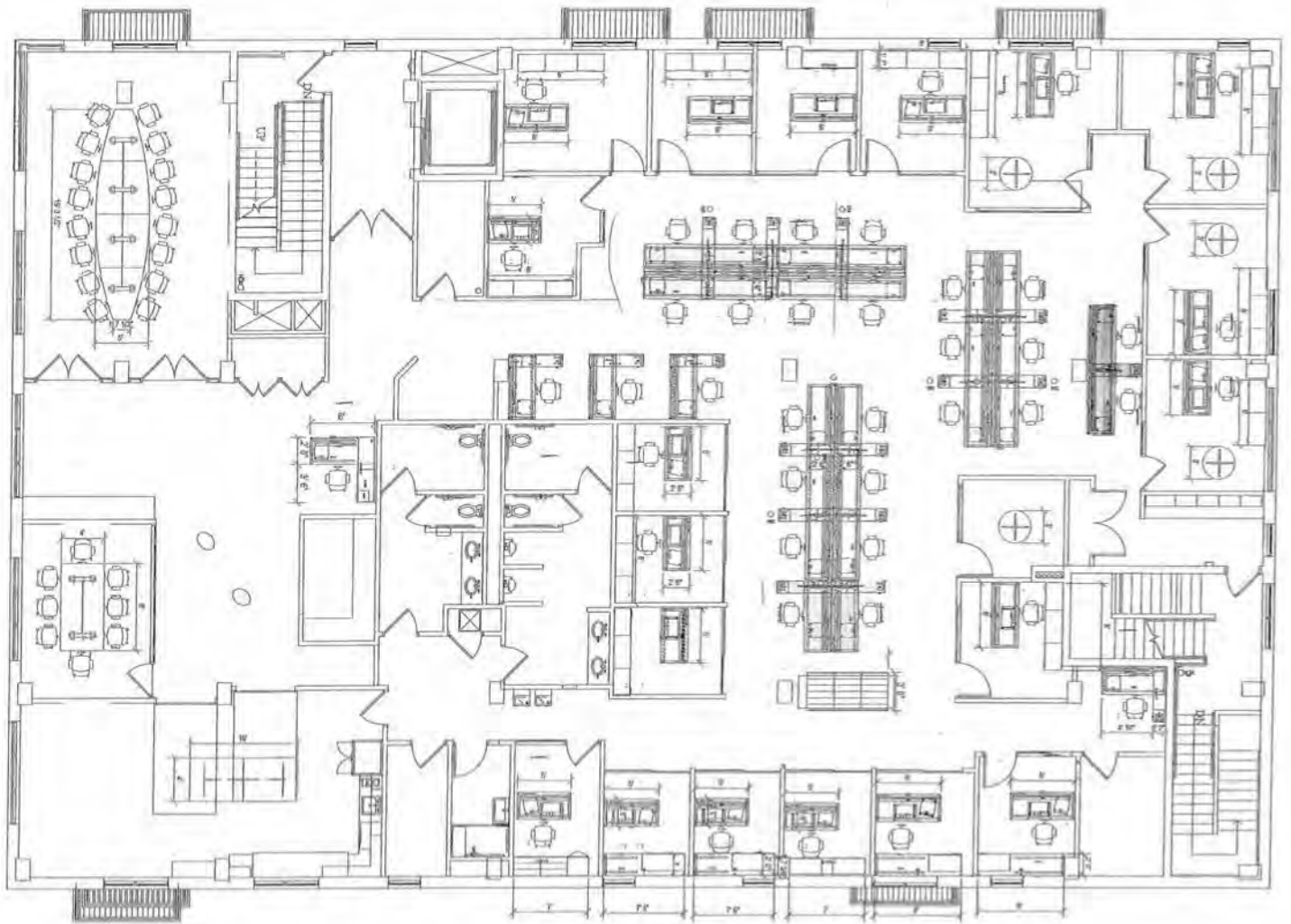
Kai Thomsen
kthomsen@lee-associates.com
D 952.223.6724

All information furnished regarding property for sale, rental or financing is from sources deemed reliable, but no warranty or representation is made to the accuracy thereof and same is submitted to errors, omissions, change of price, rental or other conditions prior to sale, lease or financing or withdrawal without notice. No liability of any kind is to be imposed on the broker herein.

OFFICE FOR SUBLEASE SEVENTEEN10 BUILDING

1710 W. Lake Street, Minneapolis, MN 55408

Second Floor



Kai Thomsen
kthomsen@lee-associates.com
D 952.223.6724

All information furnished regarding property for sale, rental or financing is from sources deemed reliable, but no warranty or representation is made to the accuracy thereof and same is subject to errors, omissions, changes of price, rental or other conditions prior to sale, lease or financing or withdrawal without notice.
No liability of any kind is to be imposed on the broker herein.

OFFICE FOR SUBLEASE SEVENTEEN10 BUILDING

1710 W. Lake Street, Minneapolis, MN 55408

**LEE &
ASSOCIATES**
COMMERCIAL REAL ESTATE SERVICES



Kai Thomsen
kthomsen@lee-associates.com
D 952.223.6724

All information furnished regarding property for sale, rental or financing is from sources deemed reliable, but no warranty or representation is made to the accuracy thereof and same is submitted to errors, omissions, change of price, rental or other conditions prior to sale, lease or financing or withdrawal without notice. No liability of any kind is to be imposed on the broker herein.