



FOR LEASE

INDUSTRIAL PROPERTY  
±0.29 ACRES LAY DOWN



GRESCON DEVELOPMENT LLC

7280 PEPPERMILL – 6,000 SQFT



GRESCON DEVELOPMENT LLC

# OVERVIEW



## OFFICE

- 3 OFFICE
- LOBBY AREA
- 2 RESTROOM
- 1 BREAKROOM



## WAREHOUSE

- 2 OVERHEAD DOORS
- 1 LOADING DOCK DOOR



## LAY DOWN YARD

- APPROX 0.29 ACRES OF FENCED IN YARD
- LOADING DOCK ACCESS



GRESCON DEVELOPMENT LLC

## OVERVIEW



7280 Peppermill offers a space along a well established industrial park with approximately  $\pm 0.29$  acres of lay down yard. The building consist of 1,300 sqft of office/showroom with high ceilings, 3 office, 1 breakroom and 4,700 sqft of warehouse. Drive in Doors 1- 10'x10', 1- 12'x12', and 1- 12'x10' Loading Dock Door.



Loading Dock Access



Fenced in Lay Down Yard



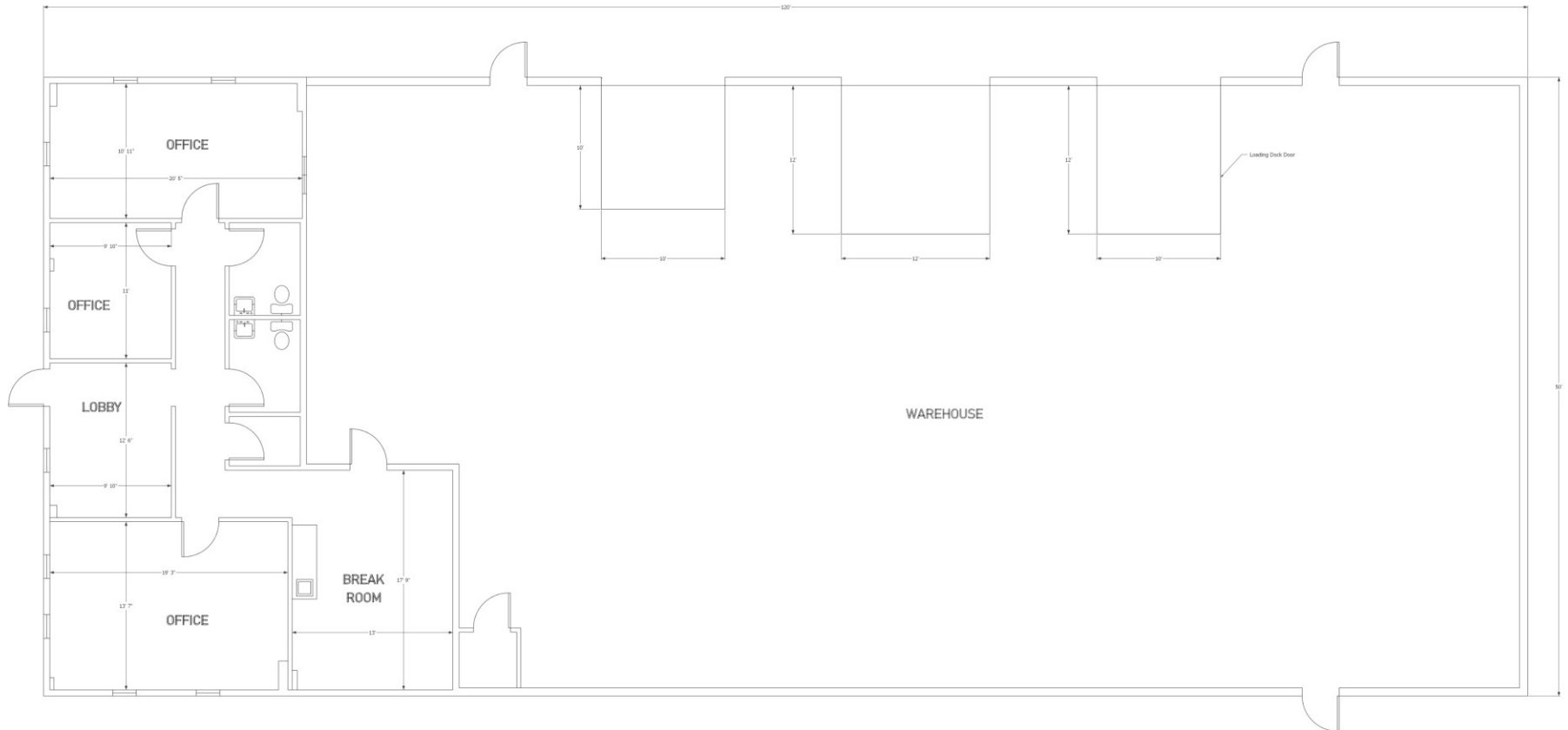
Established Industrial Park

➤ CLAYTON EVANS

843-793-9647

CEVANS@GRESCON.COM

# FLOOR PLAN



CLAYTON EVANS  
(843) 793-9647  
CEVANS@GRESCON.COM



GRESCON DEVELOPMENT LLC

MAP



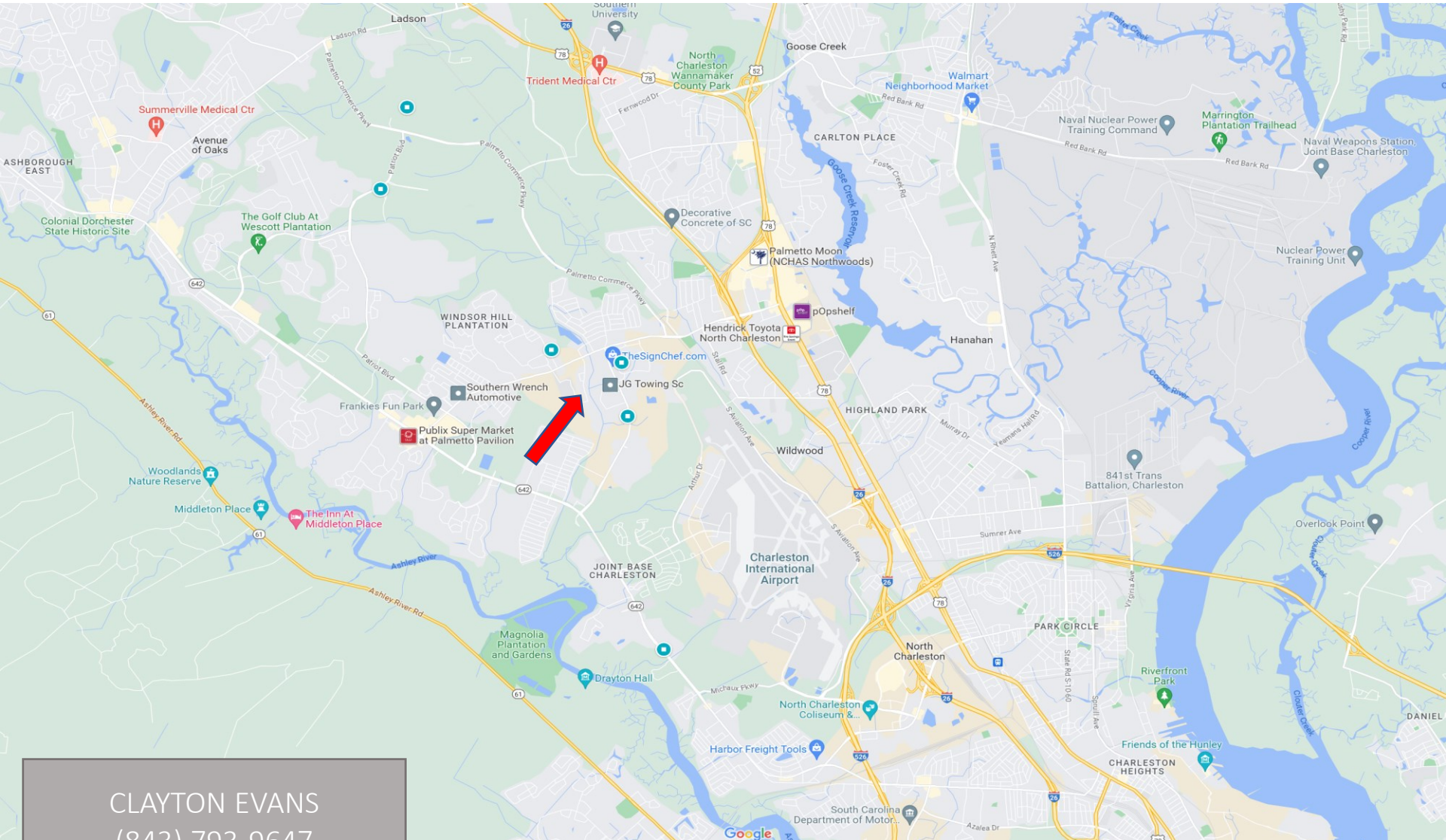
CLAYTON EVANS  
(843) 793-9647

CEVANS@GRESCON.COM



GRESCON DEVELOPMENT LLC

MAP



CLAYTON EVANS  
(843) 793-9647  
CEVANS@GRESCON.COM