



## **600 Mendocino Ave**

600 Mendocino Ave, Santa Rosa, CA 95401

**Lori Long**

Lori Long

600 Mendocino Ave, Santa Rosa, CA 95401

[llonghealy@gmail.com](mailto:llonghealy@gmail.com)

(707) 480-4830

# 600 Mendocino Ave

\$22.07 /SF/YR

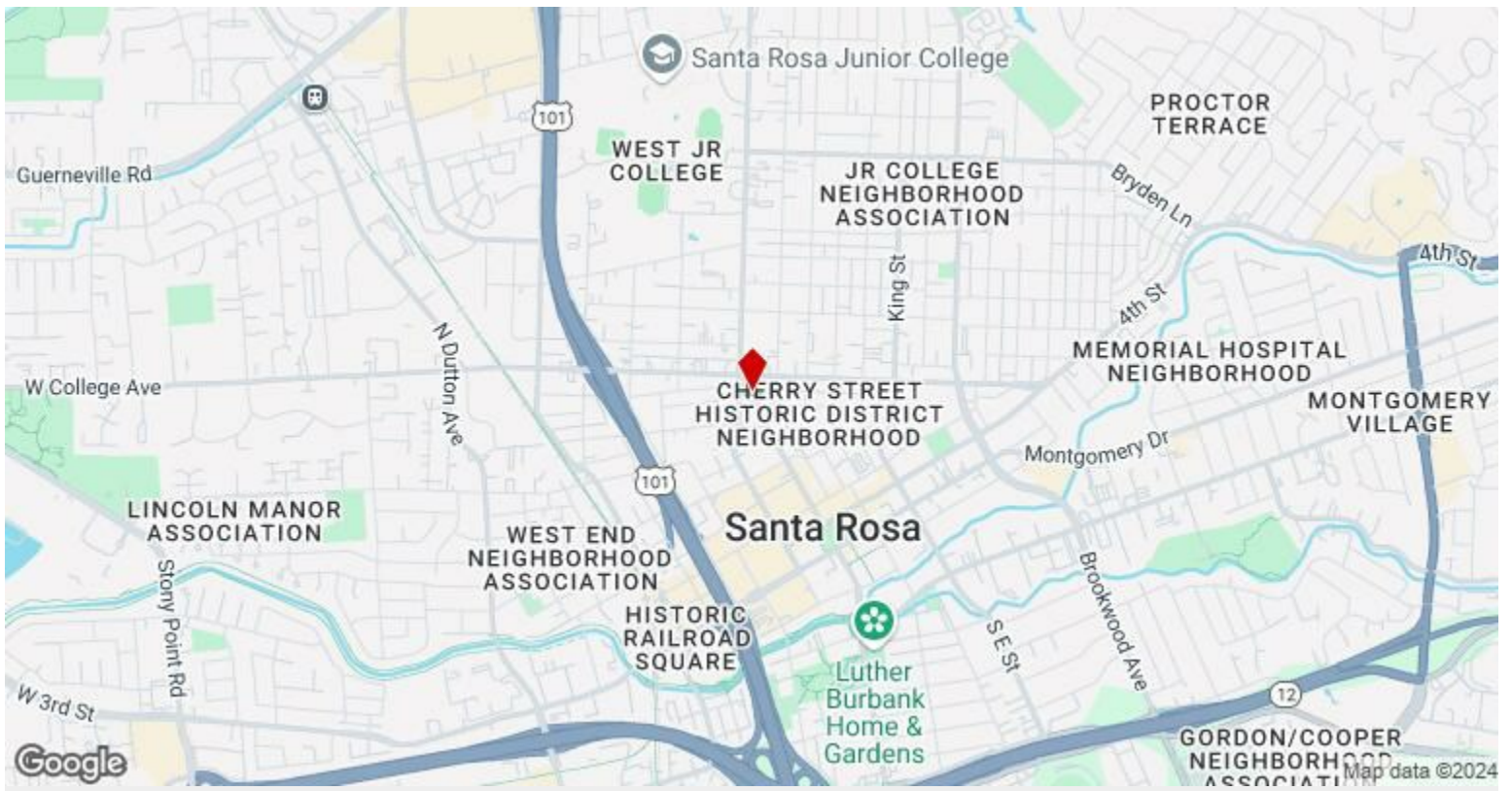


Rental Rate:	\$22.07 /SF/YR
Property Type:	Retail
Property Subtype:	Storefront Retail/Office
Gross Leasable Area:	7,217 SF
Year Built:	1922
Walk Score ®:	93 (Walker's Paradise)
Transit Score ®:	48 (Some Transit)
Rental Rate Mo:	\$1.84 /SF/MO

## 1st Floor

Space Available	2,175 SF
Rental Rate	\$22.07 /SF/YR
Date Available	Now
Service Type	Modified Gross
Space Type	Relet
Space Use	Office/Retail
Lease Term	3 - 5 Years

Space located in the Historic Cherry Street district in downtown Santa Rosa with excellent visibility. Affluent community within a 5 mile radius with an average household income of \$126k.



600 Mendocino Ave, Santa Rosa, CA 95401



# Property Photos



yard



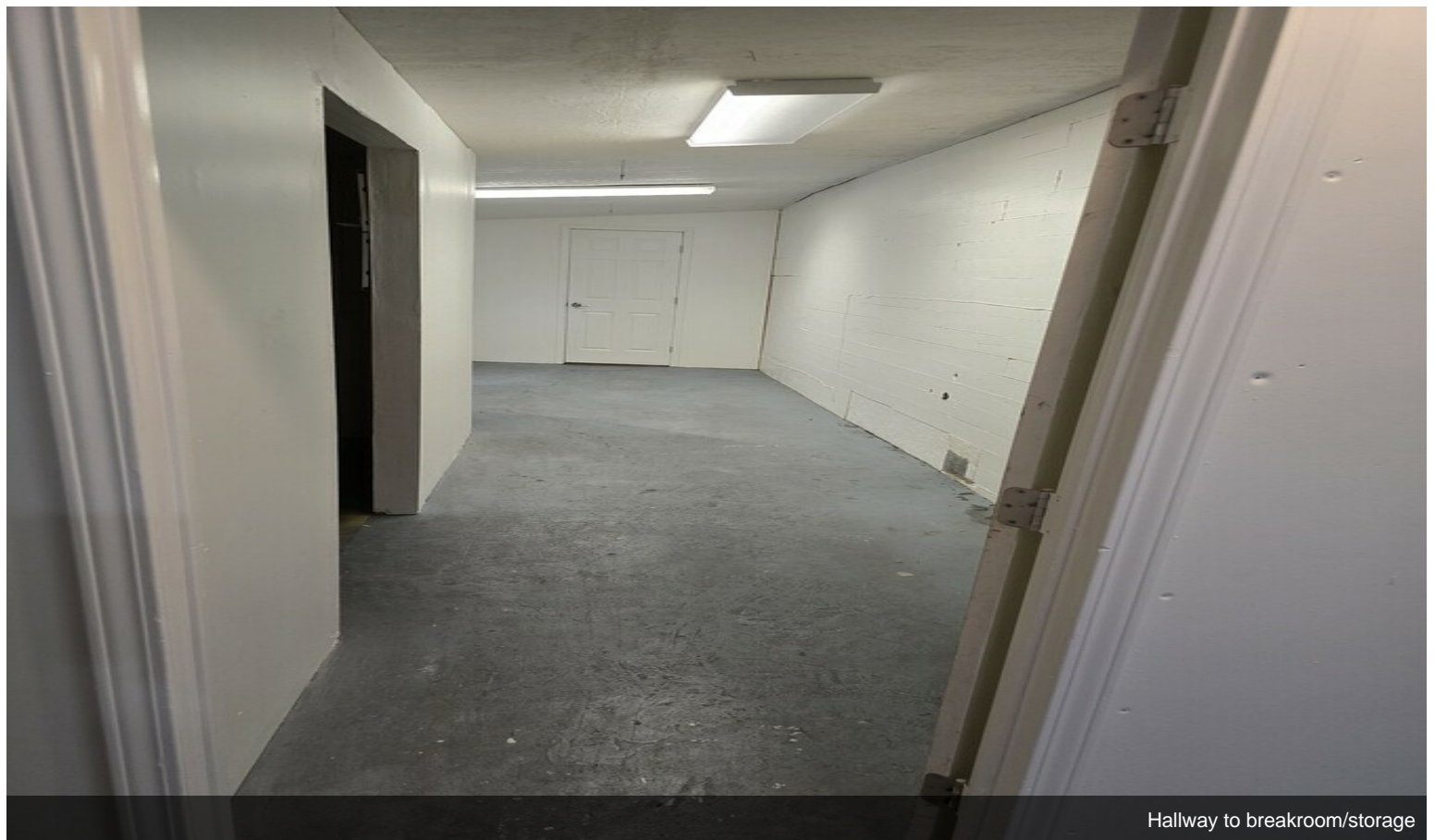
View facing front door



# Property Photos



View from front door



Hallway to breakroom/storage