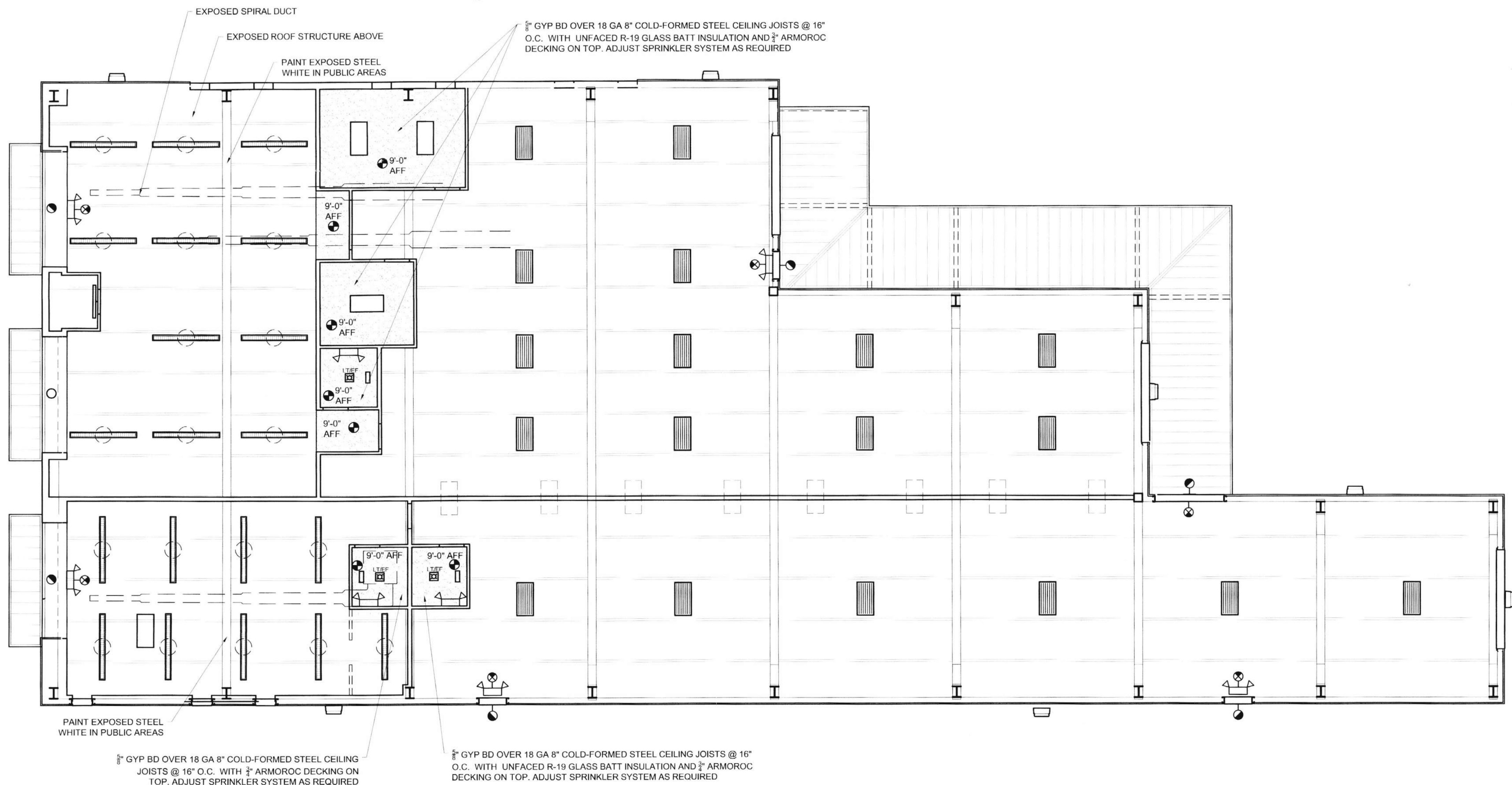


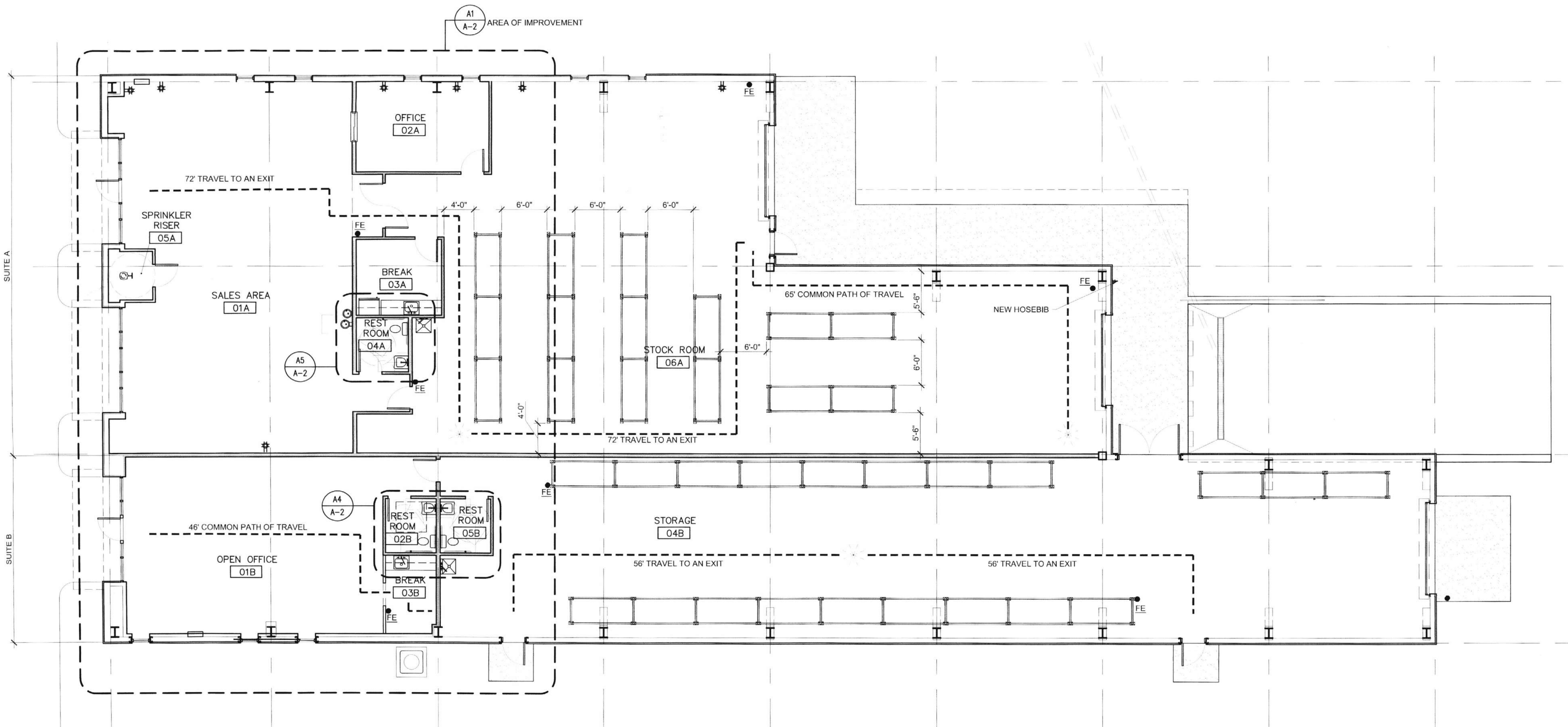
1. ALL WORK SHALL COMPLY WITH:
INTERNATIONAL BUILDING CODE, 2015 EDITION, INTERNATIONAL MECHANICAL CODE, 2015
EDITION, INTERNATIONAL PLUMBING CODE, 2015 EDITION INTERNATIONAL INTERNATIONAL
ENERGY CONSERVATION CODE, 2009 EDITION INTERNATIONAL FIRE CODE 2015 EDITION
ANSI.
2. STORING, HANDLING AND INSTALLATION OF MATERIALS SHALL COMPLY WITH THE
CUSTOMARY PROCEDURES AND PRACTICES OF EACH TRADE AS PRESCRIBED BY THEIR
RESPECTIVE TRADE ORGANIZATION AND THE REQUIREMENTS OF THE MATERIAL
MANUFACTURER.
3. CONTRACTOR AND SUBCONTRACTORS SHALL REVIEW AND COORDINATE INFORMATION
BETWEEN THE VARIOUS DISCIPLINES' DRAWINGS AND SHALL BE RESPONSIBLE FOR
KNOWING THE EFFECT OF ANOTHER TRADES SCOPE OF WORK ON THEIR OWN SCOPE OF
WORK.
4. CONTRACTOR SHALL REPORT ANY DISCREPANCIES IN THE DRAWINGS TO THE
ARCHITECT BEFORE PROCEEDING WITH WORK.
5. TRADES SHOULD INSPECT EXISTING CONDITIONS AND FIELD VERIFY ALL DIMENSIONS
PRIOR TO OFF SITE FABRICATION OR ORDERING MATERIAL AND EQUIPMENT.
6. TRADES SHALL HAVE A MINIMUM OF FIVE YEARS EXPERIENCE IN THE WORK THEY WILL
PERFORM AND THE PRODUCT CATEGORY THEY WILL INSTALL.
7. INSTALLATION OF MANUFACTURER-WARRANTED MATERIALS AND PRODUCTS SHALL BE
INSTALLED PER THE REQUIREMENTS OF THE MANUFACTURER SO AS NOT TO VOID THE
MANUFACTURER'S WARRANTY. THE CONTRACTOR SHALL BE RESPONSIBLE FOR
COORDINATING THE INSTALLATION REQUIREMENTS FOR WARRANTY WITH THE
MANUFACTURER.
8. FINISHES:
A. FLOORS:
1. SALES, OFFICE, BREAK AREAS AND BATHROOM: SEALED CONCRETE
2. WAREHOUSE: CONCRETE
B. WALLS:
1. SALES, OFFICE, BREAK AREAS AND BATHROOM: 1 COAT OF SEALER/PRIMER,
MINIMUM OF 2 COATS OF LATEX, EGGSHELL FINISH. APPLY NUMBER OF COATS
REQUIRED TO ACHIEVE COLOR UNIFORMITY
2. WAREHOUSE: 1 COAT OF SEALER/PRIMER
C. CEILINGS
EXPOSED CEILING WHERE SHOWN. PAINT EXPOSED STEEL WHITE
PAINTED GYPSUM BOARD WHERE SHOWN
D. 4" VINYL OR RUBBER COVER BASE
9. U.N.O. FURNISH AND INSTALL MATERIALS EQUIPMENT AND ACCESSORIES REQUIRED TO
COMPLETELY FINISH WORK DEPICTED IN DRAWINGS.

- HIGH BAY LIGHT FIXTURE
- COMBINATION RECESSED
LIGHT /CEILING FAN
- COMBINATION RECESSED
LIGHT /CEILING FAN
- ROUND OR LINEAR PENDANT
- ILLUMINATED EXIT SIGN
- EMERGENCY EGRESS LIGHT
- COMBINATION EMERGENCY EGRESS
LIGHT/ILLUMINATED EXIT SIGN
- EMERGENCY EGRESS EXIT
DISCHARGE LIGHT



C1 REFLECTED CEILING PLAN

C5 GENERAL NOTES



MINIMUM # OF REQUIRED PLUMBING FIXTURES PER TENANT SPACE

	WC	LAV	DE	SS
UNISEX	1	1		
			NR	1

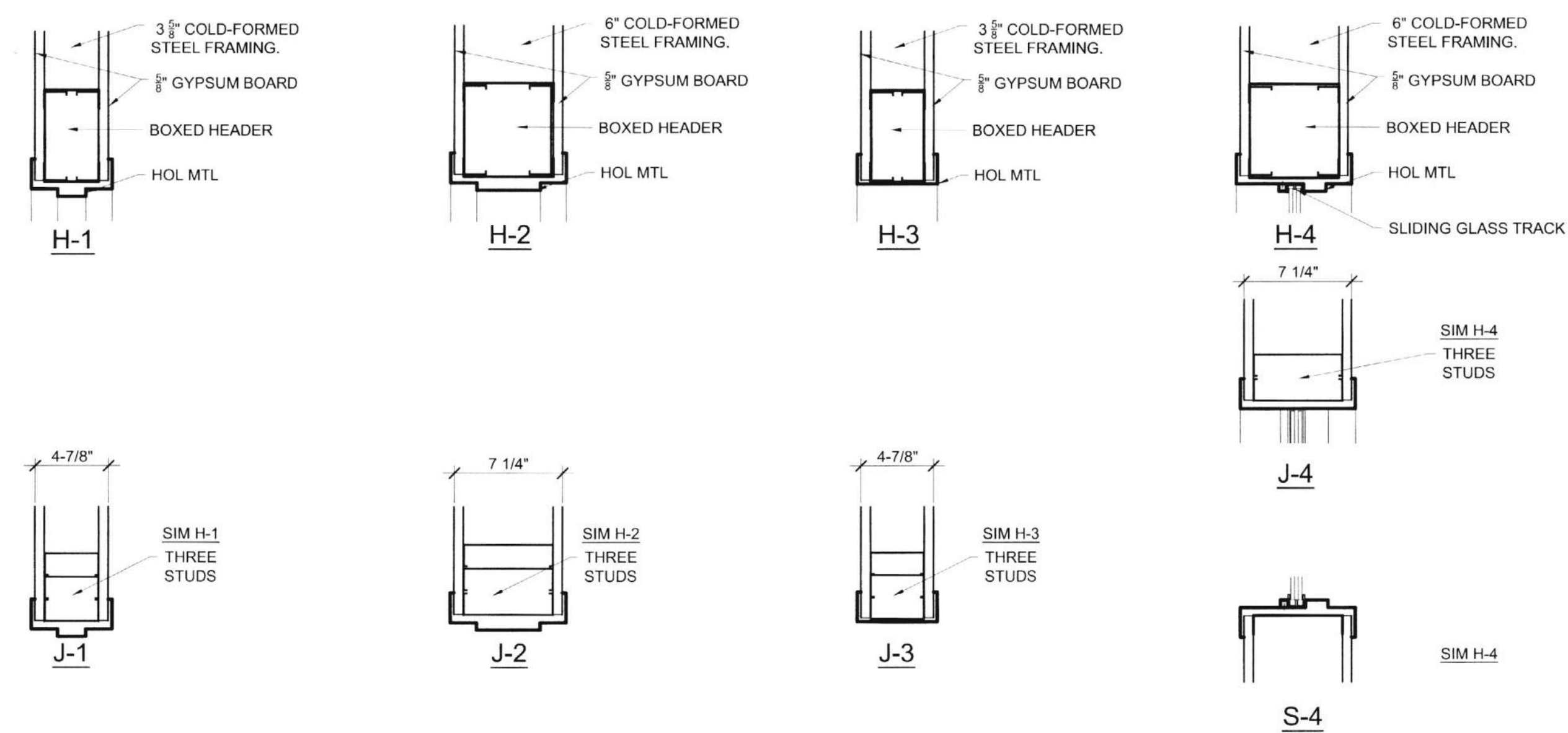


ISSUED FOR:
PERMITS 05-04-17
REVISIONS

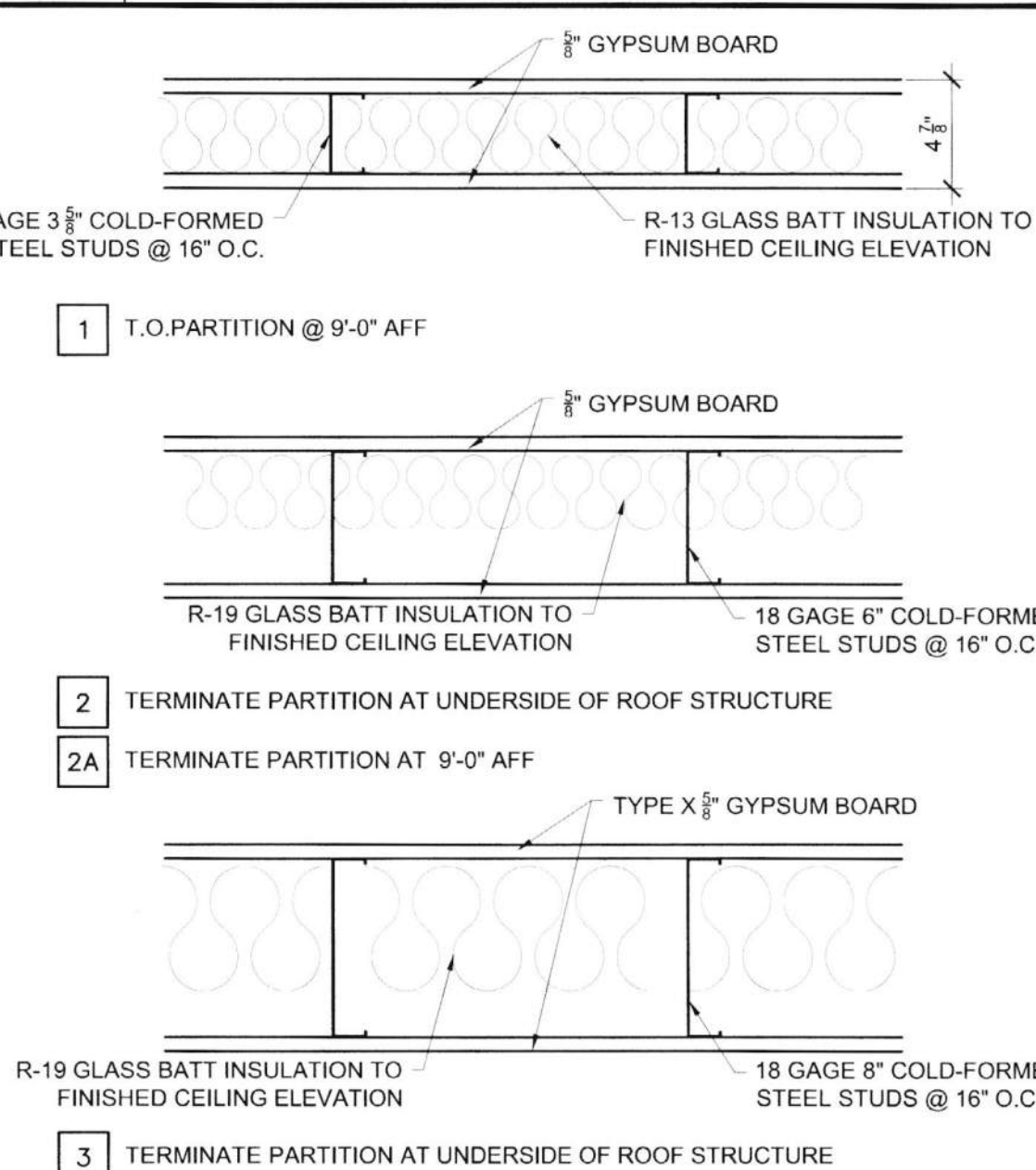
OVERALL FLOOR
PLAN, REFLECTED
CEILING PLAN,
GENERAL NOTES
AND CODE
ANALYSIS

A1

HARDWARE SETS	
<p><u>DOOR NOTES:</u></p> <ol style="list-style-type: none"> 1. DOORS SHALL BE CUSTOM GRADE 2. NON RATED DOOR SHALL BE BONDED STRUCTURAL COMPOSITE LUMBER CORE WITH HARDWOOD STILES AND RAILS. 3. VENEER SHALL BE STAIN GRADE VENEER 	<p><u>HARDWARE NOTES:</u></p> <ol style="list-style-type: none"> 1. DOORS SHALL BE READILY OPERABLE FROM THE EGRESS SIDE WITHOUT THE USE OF A KEY OR SPECIAL KNOWLEDGE OR EFFORT. 2. ACCEPTABLE MANUFACTURERS: HAGER, DORMA, SCHLAGE, SARAGENTI/ASSA ABLOY OR APPROVED EQUIV. 3. HARDWARE FINISH: BRUSHED NICKEL



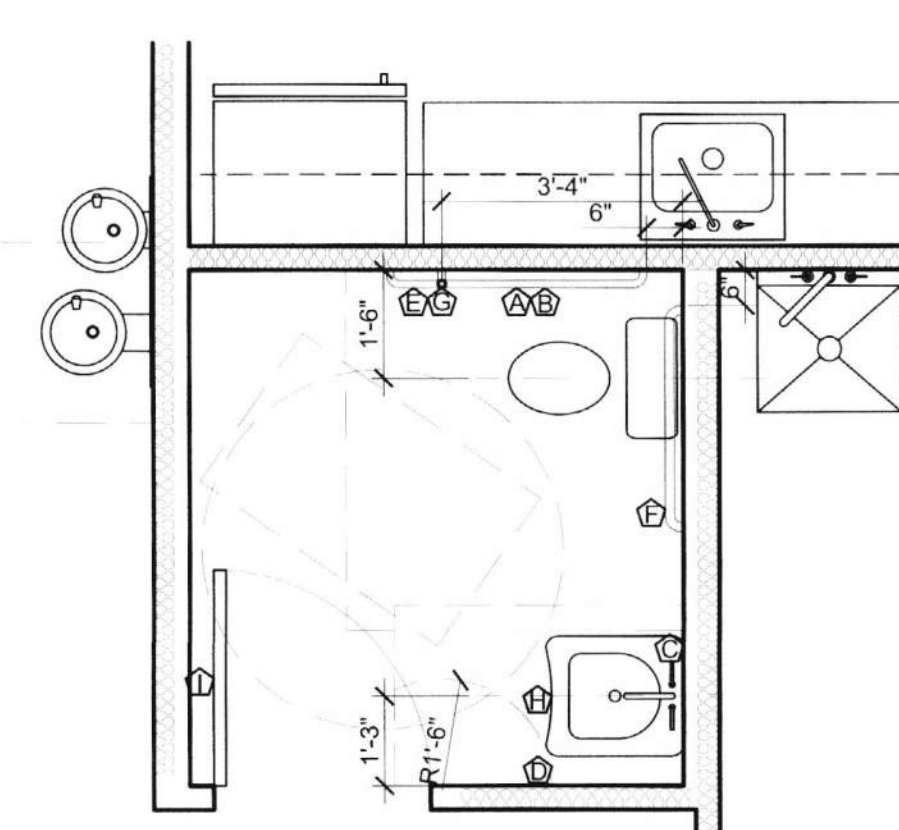
D4	### 1 1/2"=1'-0"	HEAD JAMB AND SILL DETAILS
----	---------------------	----------------------------



C5	### 1/4"=1'-0"	CASEWORK ELEVATIONS
----	-------------------	---------------------

-
- NOTE: ALL WORK SHALL BE CUSTOM GRADE**
- Blocking as required
- Wire pulls
- P-LAM OVER M-3 PARTICLE BOARD COUNTER WITH INTEGRAL BACK SPLASH OR GRANITE.
- MELAMINE OVER M-3 PARTICLE BOARD BOXES
- MELAMINE OVER M-3 PARTICLE BOARD ADJUSTABLE SHELVES WITH VINYL EDGE BANDING
- P-LAM OVER M-3 PARTICLE BOARD FULL OVERLAY DOORS WITH VINYL EDGE BANDING AND CONCEALED 120° HINGES
- RUBBER OR VINYL COVE BASE
- 2'-6"
- 1'-6"
- 5'-0"
- 4"

B5	### 3/4"=1'-0"	TYPICAL CASEWORK DETAILS
----	-------------------	--------------------------



A5	### 3/8"-1'-0"	ENLARGED BATHROOM PLAN
----	-------------------	------------------------