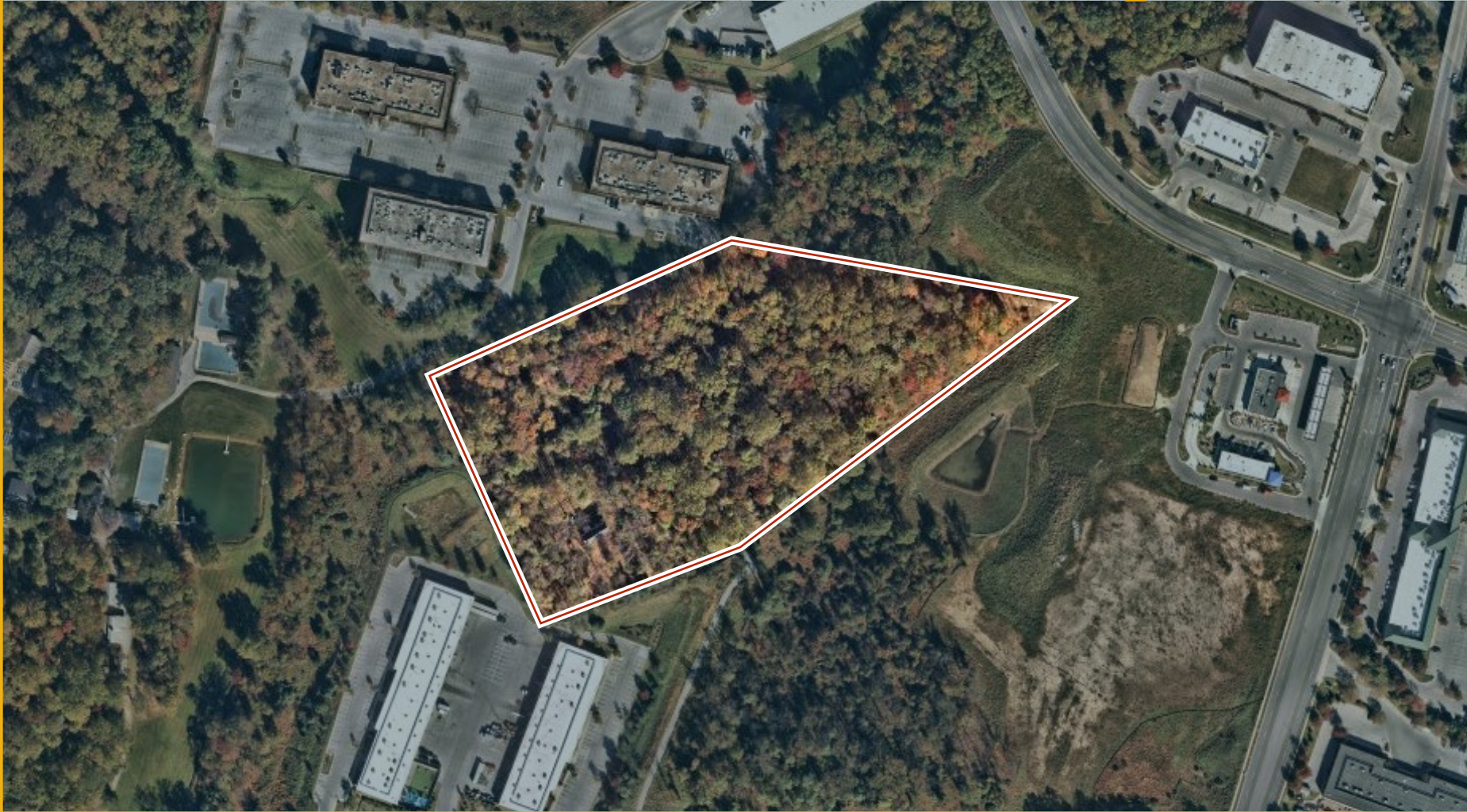




9 ACRES ± OF ML ZONED LAND

6 EASTER CT | OWINGS MILLS, MARYLAND 21117

FOR
SALE



MACKENZIE

COMMERCIAL REAL ESTATE SERVICES, LLC

PROPERTY OVERVIEW

HIGHLIGHTS:

- Fully fenced and secure
- Public Water and Sewer available
- Institutionally-owned adjacent flex properties are complementary
- ML Zoning allowing for a wide variety of potential uses
- 2.5 Miles from I-795
- Prime location for contractor yard, small-bay industrial, etc.

LOT SIZE:

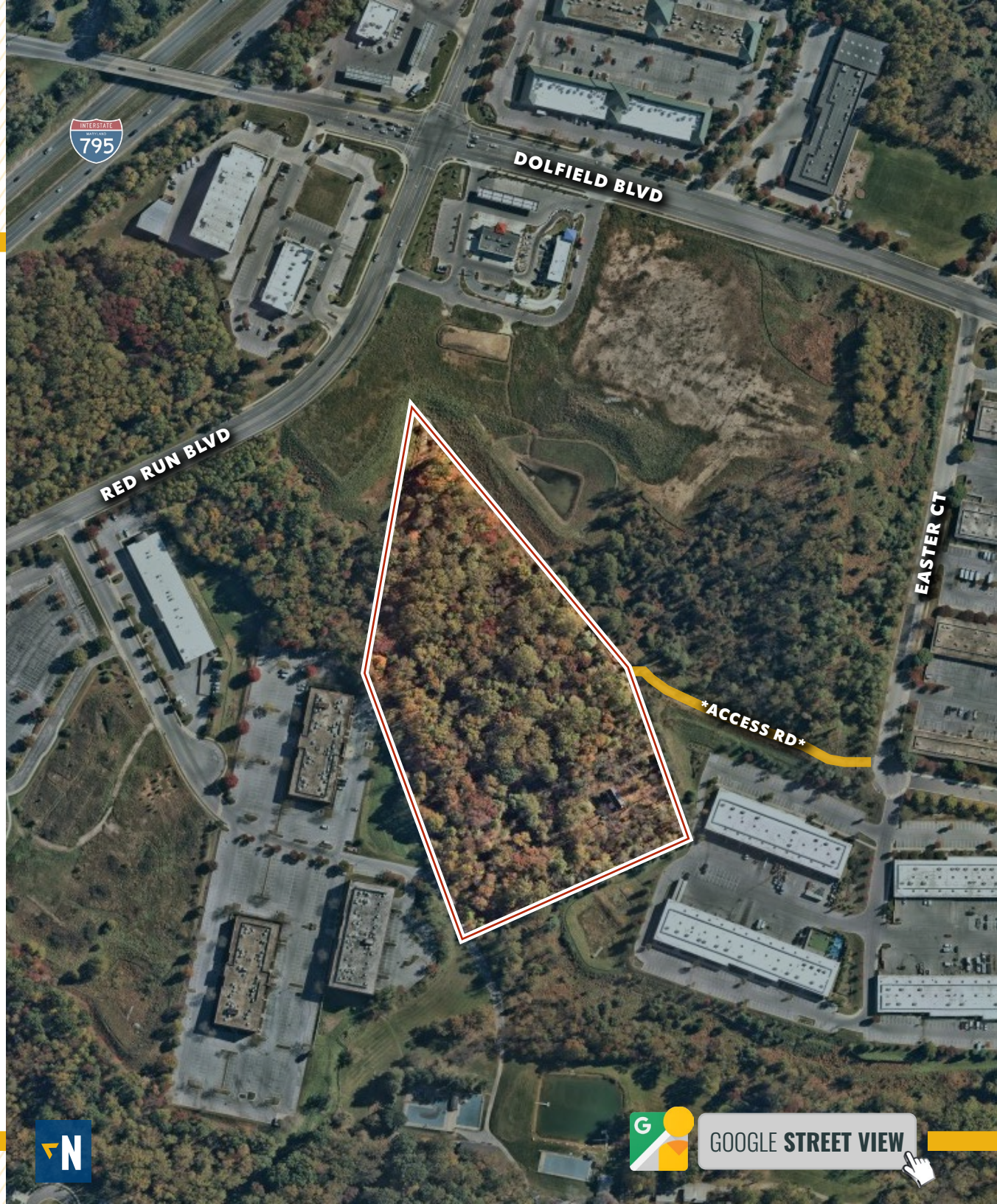
9.03 ACRES ±

ZONING:

ML (MANUFACTURING LIGHT)

SALE PRICE:

\$1,100,000



MARKET AERIAL



DEMOGRAPHICS

2025

RADIUS:

1 MILE

3 MILES

5 MILES

RESIDENTIAL POPULATION



2,702

36,574

63,541

DAYTIME POPULATION



7,936

71,726

119,236

AVERAGE HOUSEHOLD INCOME



\$127,097

\$118,255

\$122,281

NUMBER OF HOUSEHOLDS



2,749

31,938

53,376

MEDIAN AGE

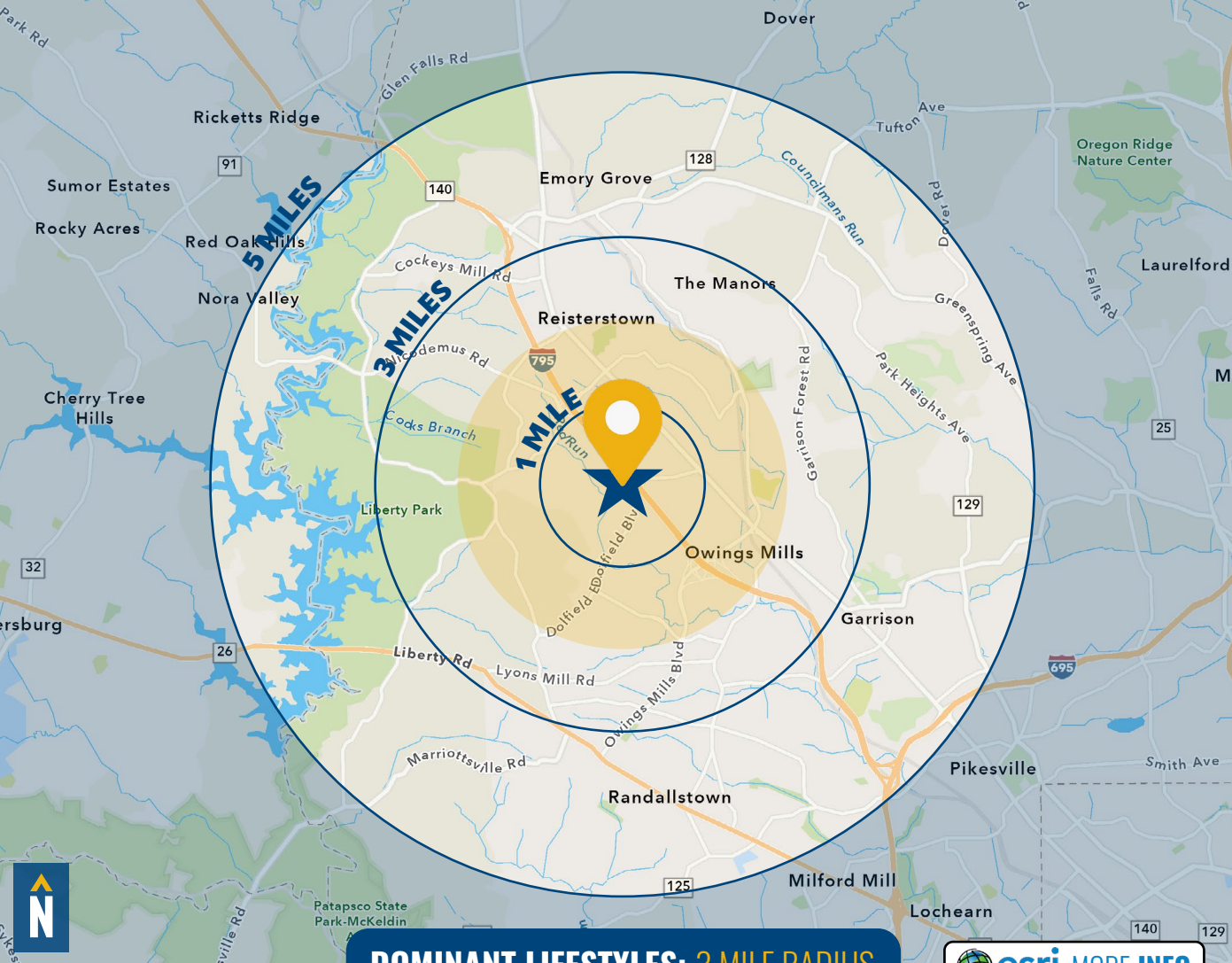


39.6

37.8

40.3

FULL DEMOS REPORT



DOMINANT LIFESTYLES: 3 MILE RADIUS

esri MORE INFO

14%

DREAMBELT

MEDIAN

AGE: 41.5

HH INCOME: \$94,802



About half of this population is between 35 and 74, and most households consist of married cohabitating couples. They like to shop at warehouse clubs and often spend money on their pets and gardening tools.

13%

MODERN MINDS

MEDIAN

AGE: 34.6

HH INCOME: \$91,039



Residents are mostly in the 25 to 44 age range, and nearly half of individuals aged 25 and older hold a bachelor's degree. They spend money on clothing, travel and dining out, including fast food.

9%

SAVVY
SUBURBANITES

MEDIAN

AGE: 44.0

HH INCOME: \$139,696



These residents work in professional fields such as management and finance, where couples' combined wages positions them in the middle to upper income tiers. They like to invest in home improvement/landscaping.

FOR MORE INFO **CONTACT:**



OWEN ROUSE

SENIOR VICE PRESIDENT, INVESTMENT SALES

410.494.6654

OROUSE@mackenziecommercial.com



TOM GREEN

REAL ESTATE ADVISOR

410.494.6641

TGREEN@mackenziecommercial.com



VISIT **PROPERTY PAGE** FOR MORE INFORMATION.



MACKENZIE

COMMERCIAL REAL ESTATE SERVICES, LLC

410-821-8585

**2328 W. Joppa Road, Suite 200
Lutherville, MD 21093**

OFFICES IN: ANNAPOLIS, MD BALTIMORE, MD BEL AIR, MD COLUMBIA, MD **LUTHERVILLE, MD** CHARLOTTESVILLE, VA

www.MACKENZIECOMMERCIAL.com

No warranty or representation, expressed or implied, is made as to the accuracy of the information contained herein, and same is submitted subject to errors, omissions, change of price, rental or other conditions, withdrawal without notice, and to any specific listing conditions imposed by our principals.