

ANTIOCH PLAZA

6700 ANTIOCH ROAD, MERRIAM, KANSAS



NEWMARK
ZIMMER

CLASS A OFFICE SPACE FOR LEASE

PROPERTY LOCATION



PROPERTY DETAILS

4% CO-OP
FEE FOR
QUALIFIED
DEALS

▶▶ AVAILABILITIES:

- ▶ Suite 150: 1,977 SF
- ▶ Suite 200: 3,351 SF
- ▶ Suite 240: 3,678 SF
- ▶ Suite 300: 23,297 SF

▶▶ LOCATION:

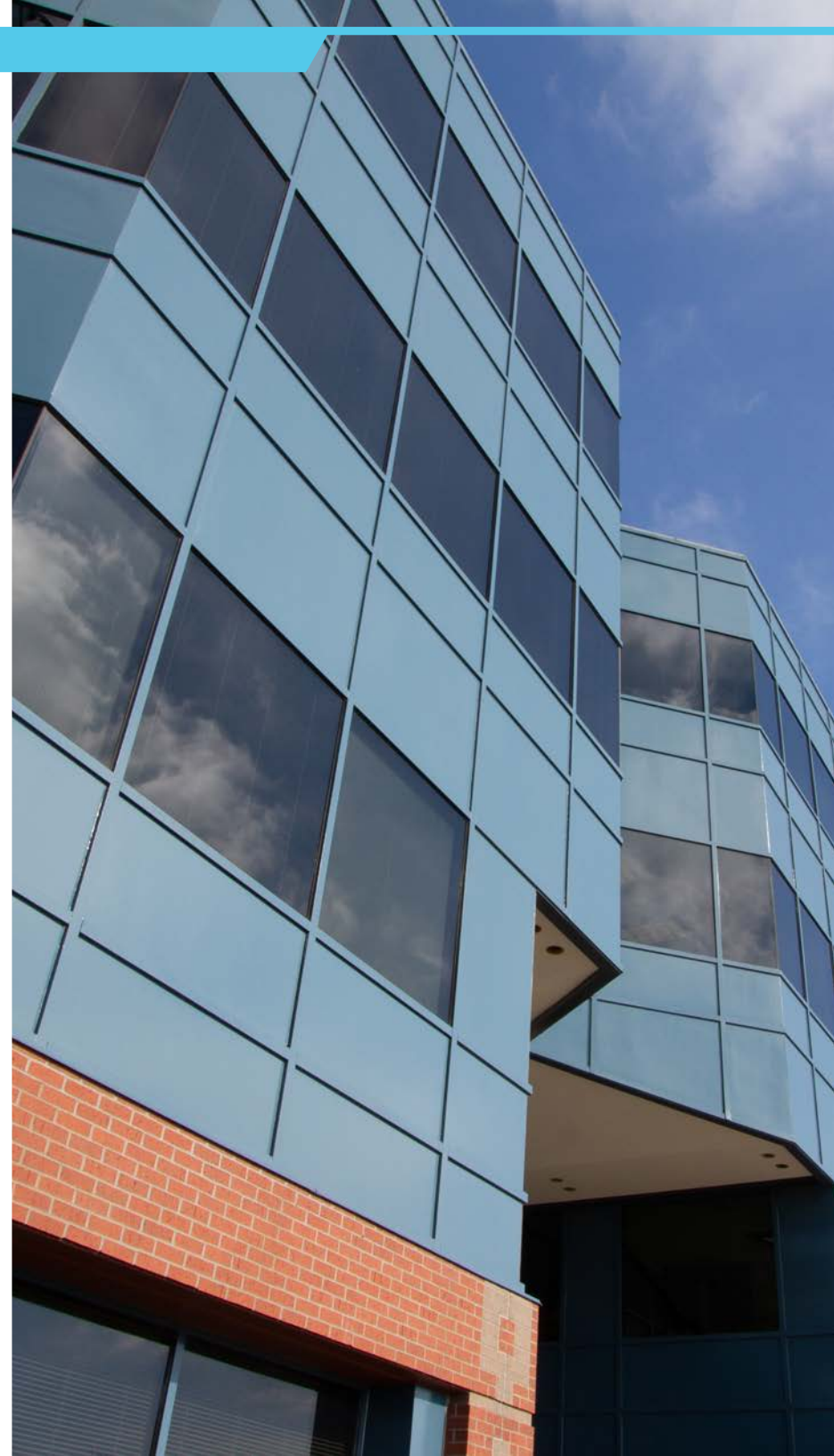
- ▶ Premier North Johnson County location
- ▶ Located just off I-35 at the 67th Street exit
- ▶ Central location provides easy access to South Johnson County, Downtown Kansas City and the Country Club Plaza

▶▶ THE BUILDING:

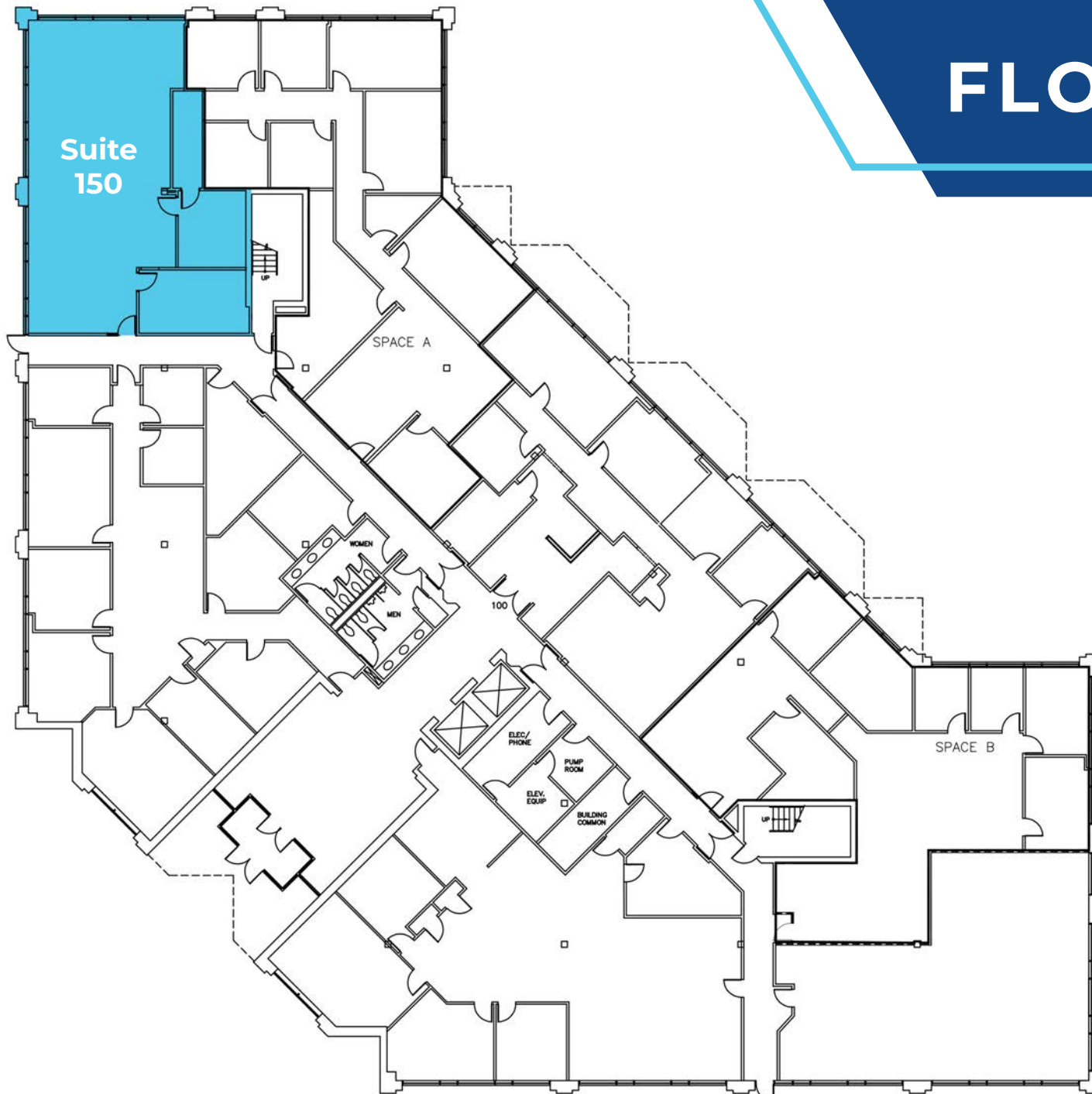
- ▶ Newly remodeled common areas and restrooms
- ▶ Ample parking
- ▶ Move-in ready suites available
- ▶ Attractive landscaping with outdoor seating
- ▶ Card key access system

▶▶ LEASE RATE:

- ▶ \$21.75/sf



FIRST FLOOR PLAN



AVAILABILITIES:

- Suite 150: 1,977 SF

SECOND FLOOR PLAN



AVAILABILITIES:

- ▶ Suite 200: 3,351 SF
- ▶ Suite 240: 3,678 SF

THIRD FLOOR PLAN



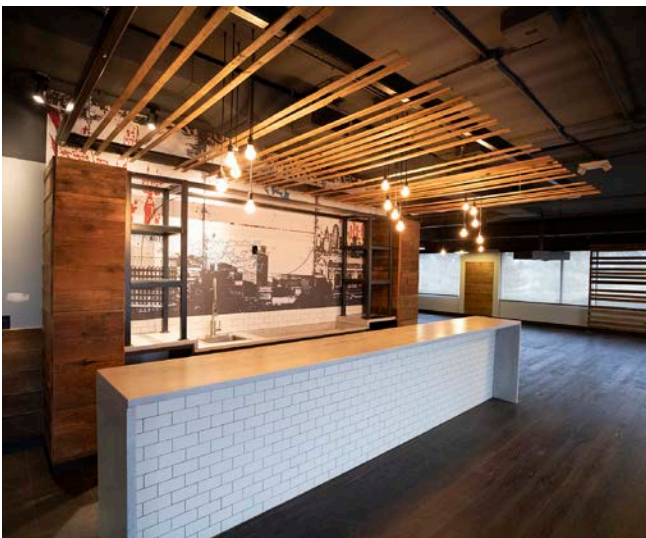
AVAILABILITIES:

- Suite 300: 23,297 SF

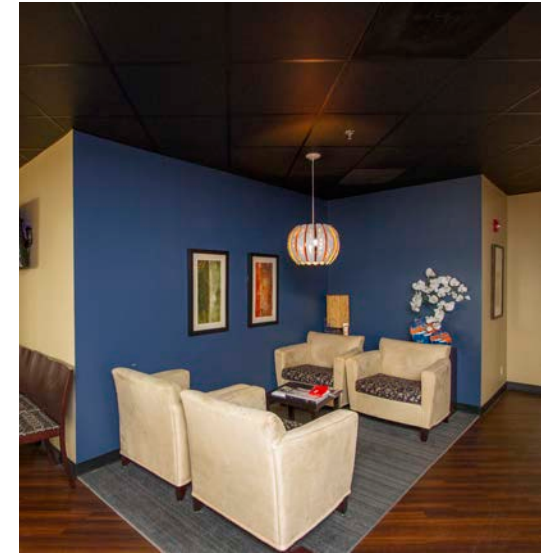
PROPERTY PHOTOS



VIRTUAL
TOUR



PROPERTY PHOTOS



ANTIOCH PLAZA

6700 ANTIOCH ROAD, MERRIAM, KANSAS

NEWMARK
ZIMMER

FOR MORE INFORMATION

MICHAEL L. VANBUSKIRK

SIOR, CCIM, CRE

Vice Chairman, Principal

t 816-512-1010

mvanbuskirk@nzimmer.com

TREY W. DEROUSSE

CCIM

Director

t 816-268-4236

tderousse@nzimmer.com