



# 2,714 SF COMMUNITY FACILITY IN THE BUSY AREA OF JACKSON HEIGHTS

FOR SALE

\$588,000

*This versatile space is perfectly suited for a healthcare center, after-school program, or any community-focused endeavor you envision.*



B · SQUARE REALTY 盛世地產



\*ALL INFORMATION INCLUDING BUT NOT LIMITED TO LOT SIZE, TAXES, AND AGE OF PROPERTY ARE NOT GUARANTEED AND SHOULD BE INDEPENDENTLY VERIFIED BY PROSPECTIVE BUYERS.\*



# 37-32 89TH ST #CF JACKSON HEIGHT NY 11372

This spacious 2,714 SF space boasts a 9-foot ceiling height, direct street access, two separate entrances, elevator and stair accessibility, and an ADA-compliant bathroom. With a Community Facility C/O in place, this versatile space is perfectly suited for a healthcare center, adult center, after-school program, or any community-focused endeavor you envision.

## PROPERTY INFO

**2,714**

TOTAL SQFT

**\$1,366**

CAM / M

**3457458**

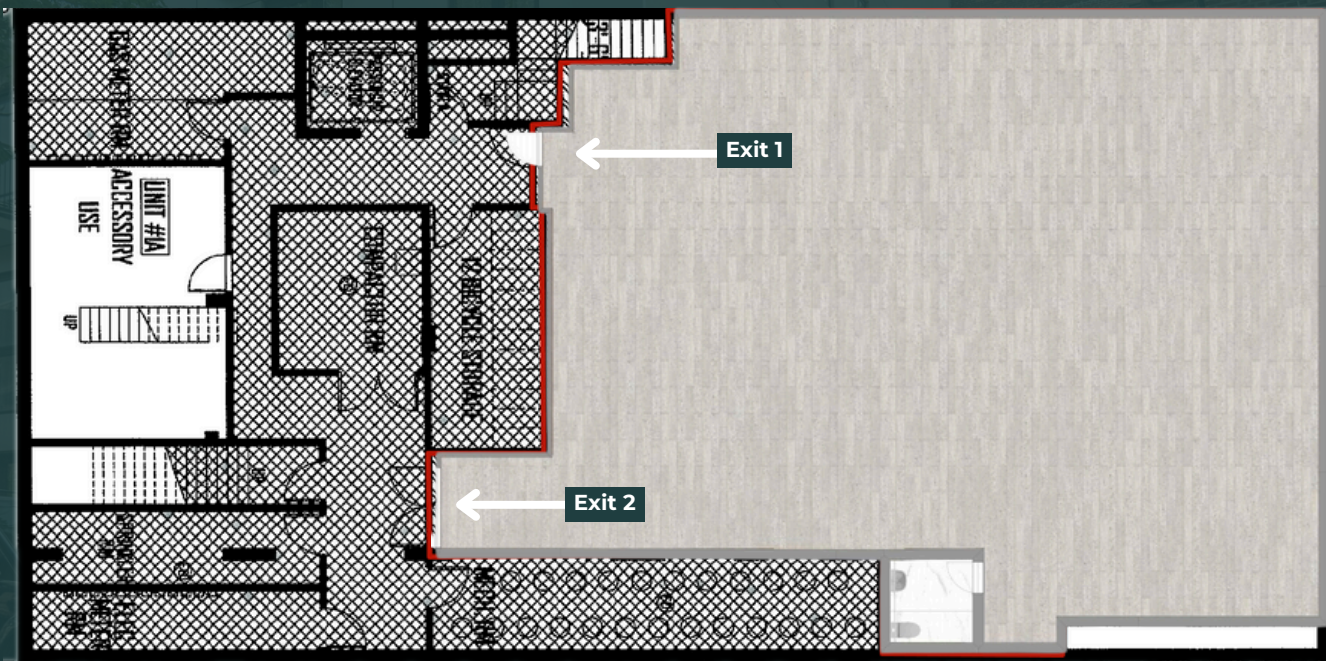
MLS NUMBER

**COMMUNITY  
FACILITY**

PROPERTY TYPE

**\$4,457/** YEARLY

R.E TAXES  
25-YEAR ICAP







Scan the QR Code to  
View the property video

## NEARBY

SUBWAY



7

90TH STREET  
ELMHURST AVE

Positioned between two bustling streets Roosevelt Avenue & 37th Ave. it enjoys high visibility and is just minutes away from the 7 train station, ensuring convenience for staff and visitors alike.



Listing Agent

**Barbie Li**

Lic. R.E Broker  
Team Leader of BLT  
Team Mentor of B2STARS

Schedule a Showing  
Email us at [info@barbieliteam.com](mailto:info@barbieliteam.com)

More information  
please call at **646-889-9988**

ADD OUR WECHAT ACCOUNT



**B · SQUARE REALTY 盛世地產**

T: (718)939.8388 136-20 38<sup>th</sup> Ave 3E, Flushing NY 11354  
COMING SOON 800 Northern Blvd, Great Neck, NY 11021

**BARBIE LI**  
REAL ESTATE TEAM

Barbiebroker @ barbie\_li\_ny\_broker