

# 405 W DR MARTIN LUTHER KING JR BLVD

PLANT CITY, FL 33563



## 10,251 SF OFFICE BUILDING FOR SALE

ASKING PRICE: \$1,650,000





# PROPERTY HIGHLIGHTS



10,251  
TOTAL SF



1.34  
ACRES



65+  
PARKING SPACES  
W/ ABILITY TO EXPAND



SEVERAL PRIVATE  
OFFICES



BREAKROOM



3 POINTS  
INGRESS/EGRESS

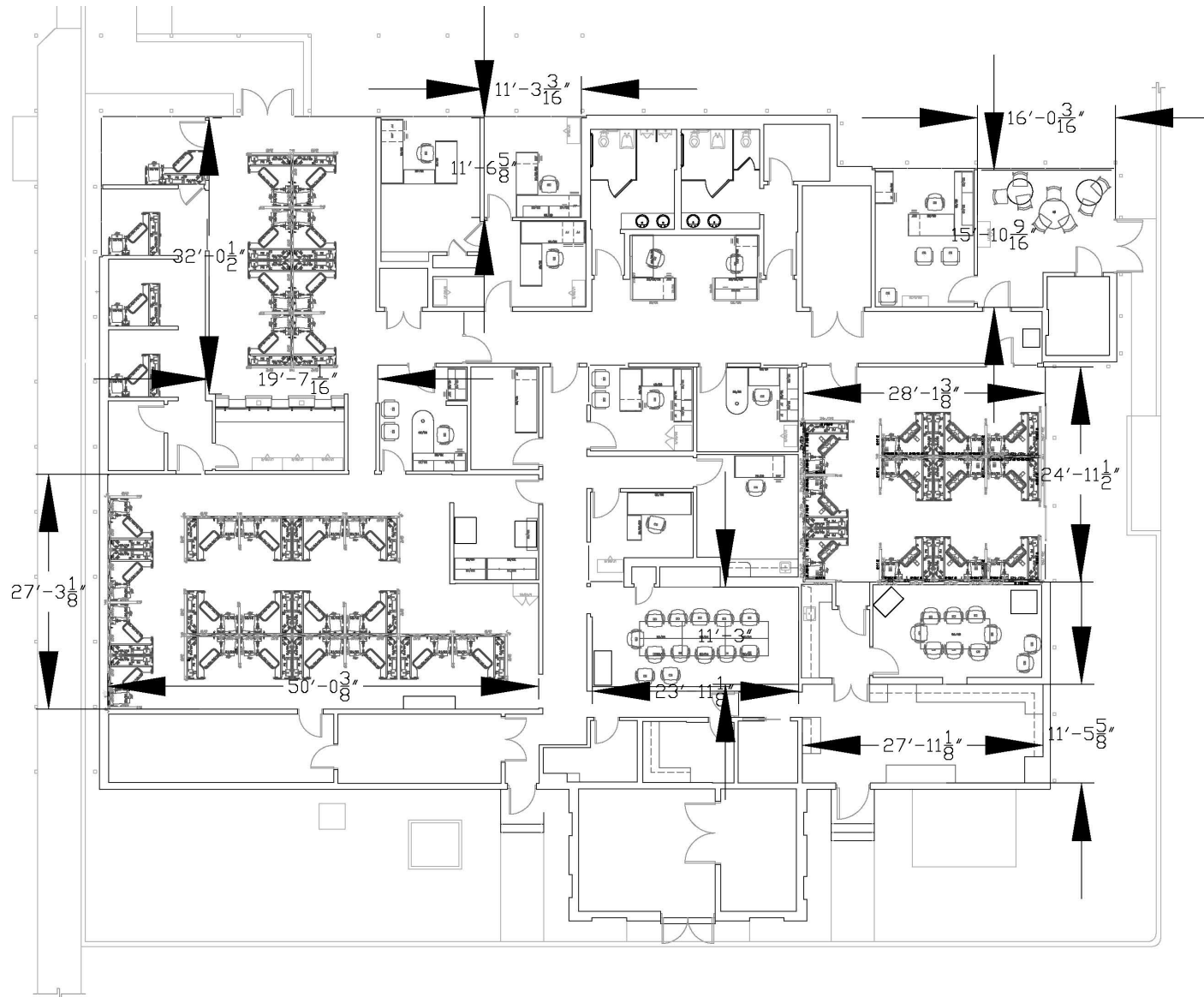


FULLY FENCED AND  
GATED



BULLPEN/CUBICLE  
AREA

# FLOOR PLAN





# PROPERTY PHOTOGRAPHY





# AMENITIES



**John Jackson, CCIM, SIOR**  
Executive Director  
727 643 7316  
john.jackson@cushwake.com

**JT Faircloth, SIOR**  
Senior Director  
813 833 3242  
jt.faircloth@cushwake.com

**Casey Perry**  
Director  
813 233 6564  
casey.g.perry@cushwake.com

©2025 Cushman & Wakefield. All rights reserved. The information contained in this communication is strictly confidential. This information has been obtained from sources believed to be reliable but has not been verified. NO WARRANTY OR REPRESENTATION, EXPRESS OR IMPLIED, IS MADE AS TO THE CONDITION OF THE PROPERTY (OR PROPERTIES) REFERENCED HEREIN OR AS TO THE ACCURACY OR COMPLETENESS OF THE INFORMATION CONTAINED HEREIN, AND SAME IS SUBMITTED SUBJECT TO ERRORS, OMISSIONS, CHANGE OF PRICE, RENTAL OR OTHER CONDITIONS, WITHDRAWAL WITHOUT NOTICE, AND TO ANY SPECIAL LISTING CONDITIONS IMPOSED BY THE PROPERTY OWNER(S). ANY PROJECTIONS, OPINIONS OR ESTIMATES ARE SUBJECT TO UNCERTAINTY AND DO NOT SIGNIFY CURRENT OR FUTURE PROPERTY PERFORMANCE.

